

10

SHEET NO.	SECTION	COUNTY	TOTAL SHEETS	SHEET NO.
330	2001-131-1	COOK	48	1

STATE OF ILLINOIS
 DEPARTMENT OF TRANSPORTATION
 DIVISION OF HIGHWAYS

PLANS FOR PROPOSED HIGHWAY

FAP 330: US 12/20/45/LA GRANGE ROAD
 OVER VARIOUS LOCATIONS

SECTION 2001-131-1

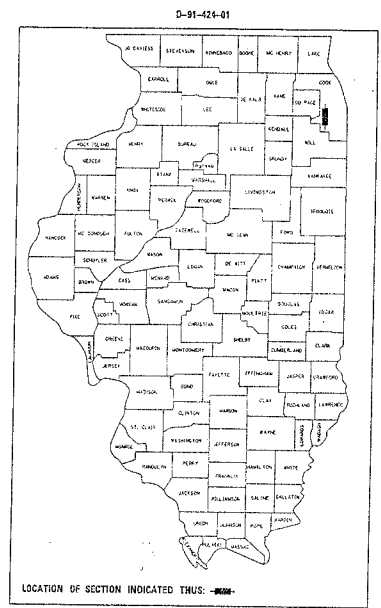
JOINT REPAIR AND DECK PATCHING

COOK COUNTY

C-91-424-01

- 1.) SN:016-2467 NB OVER DES PLAINES RIVER
- 2.) SN:016-2468 NB OVER S&S CANAL, I&M CANAL, AND ICG RR
- 3.) SN:016-2406 SB OVER S&S CANAL, I&M CANAL, AND ICG RR
- 4.) SN:016-2407 SB OVER DES PLAINES RIVER

FOR INDEX OF SHEETS, SEE SHEET NO. 2

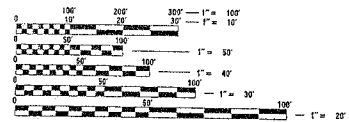


IMPROVEMENT 1 AND 4 LOCATED
 IN THE VILLAGE OF HODGKINS

IMPROVEMENT 2 AND 3 LOCATED
 IN THE VILLAGE OF WILLOW SPRINGS

TRAFFIC DATA

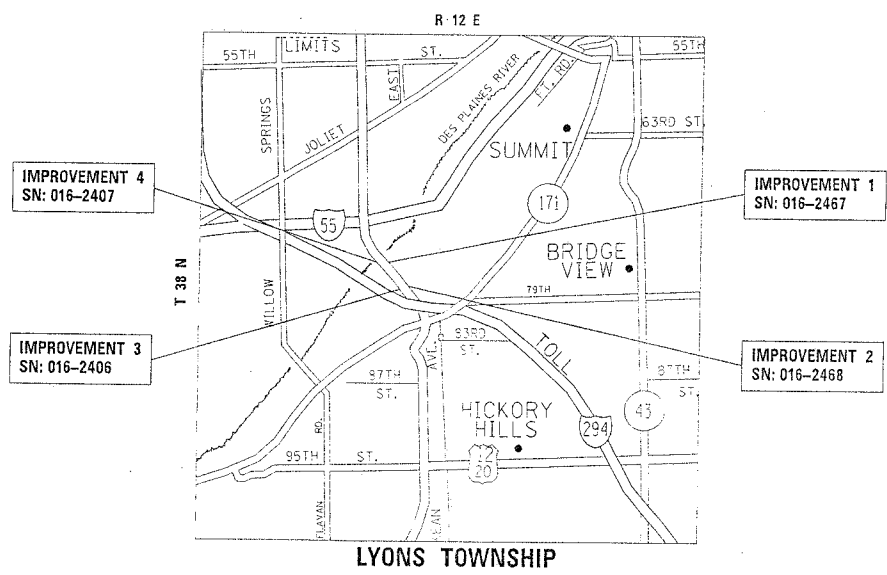
2001 ADT = 73,000
 POSTED SPEED LIMIT = 45 MPH



FULL SIZE PLANS HAVE BEEN PREPARED USING STANDARD ENGINEERING SCALES. REDUCED SIZED PLANS WILL NOT CONFORM TO STANDARD SCALES. IN MAKING MEASUREMENTS ON REDUCED PLANS, THE ABOVE SCALES MAY BE USED.

J.U.L.I.E.
 JOINT UTILITY LOCATION INFORMATION FOR EXCAVATION
 1-800-892-0123

CONTRACT NO. 62299



STATE OF ILLINOIS
 DEPARTMENT OF TRANSPORTATION
 DIVISION OF HIGHWAYS

SUBMITTED Mails 20 June 28, 20 02

A.S. R.L.P. DISTRICT ENGINEER

Michael R. King ENGINEER OF DESIGN AND ENVIRONMENT

June 28 20 02

James R. P. ... DIRECTOR, DIVISION OF HIGHWAYS

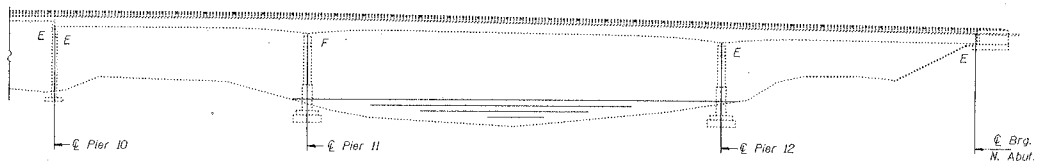
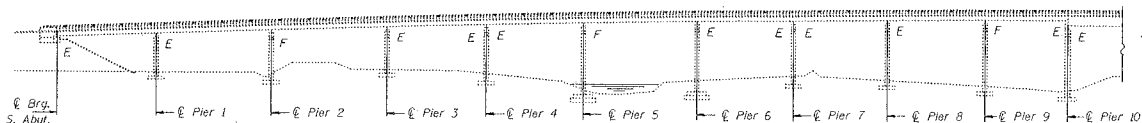
PRINTED BY THE AUTHORITY
 OF THE STATE OF ILLINOIS

C:\pcc\pcc\pcc\143201\143201.dwg: 14:18:17 05/09/2002

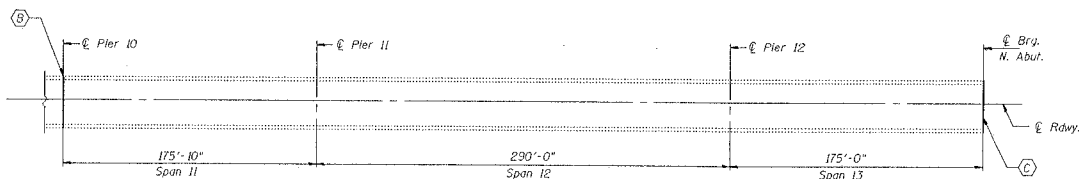
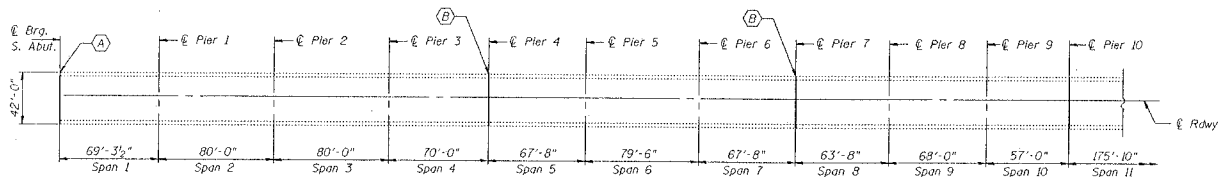
DISTRICT ONE - BUREAU OF MAINTENANCE:
 MAINTENANCE DESIGN ENGINEER: R. BUKO (847) 705-4178

STATE OF ILLINOIS
DEPARTMENT OF TRANSPORTATION

ROUTE NO.	SECTION	POST MILE	DATE	SCALE	SHEET NO. / SHEETS
330		000K	4/8	3/7	7 SHEETS
DESIGNED BY	CHECKED BY	DRAWN BY	DATE	PROJECT	



ELEVATION



PLAN

DESIGNED	V. H. VENTZ
CHECKED	Paul A. Johnson
DRAWN	[Signature]
CHECKED	VHV PSJ

EXAMINED	John R. Miller
PASSED	[Signature]

- (A) Replace 2 1/2" Neoprene Exp. Jt. Using Silicone Joint Sealer w/polymer concrete nosing.
- (B) Remove & Replace existing 4" Neoprene Expansion Joint.
- (C) Rebuild Joint Using a Modular Jt.

GENERAL NOTES

Plan dimensions and details relative to existing structure have been taken from existing plans and are subject to nominal construction variations. It shall be the Contractor's responsibility to verify such dimensions and details in the field and make necessary approved adjustments prior to construction or ordering of materials. Such variations shall not be cause for additional compensation for a change in the scope of the work, however, the Contractor will be paid for the quantity actually furnished at the unit price bid for the work.

Reinforcement bars shall conform to the requirements of AASHTO M-31, M-42 or M-53 Grade 60.

Joint opening of North Abutment shall be adjusted according to Article 503.10(c) of the Std. Specs. when the deck is poured at an ambient temperature other than 50° F.

For deck slab repair (partial) locations see Roadway Plans.

TOTAL BILL OF MATERIAL

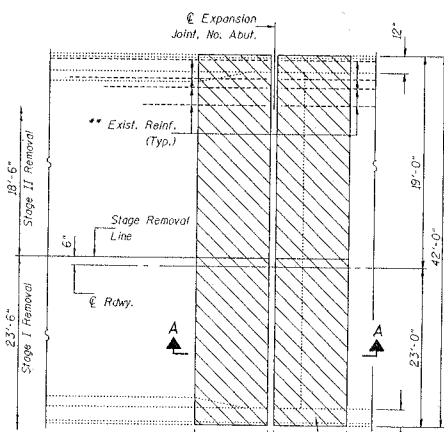
ITEM	UNIT	QUANTITY
Concrete Removal	Cu. Yd.	9.1
Concrete Superstructure	Cu. Yd.	9.1
Neoprene Expansion Joint 4"	Foot	125
Modular Expansion Joint 6"	Foot	40
Silicone Joint Sealer	Foot	41
Polymer Concrete	Cu. Ft.	8
Deck Slab Repair (Partial)	Sq. Yd.	0.5

PLAN & ELEVATION
LaGRANGE ROAD (U.S. 12/20/45)
OVER SANITARY & SHIP CANAL
I&M CANAL & ICG RAILROAD
F.A. RTE. 124
COOK COUNTY
S.N. 016-2468 (N.B.)

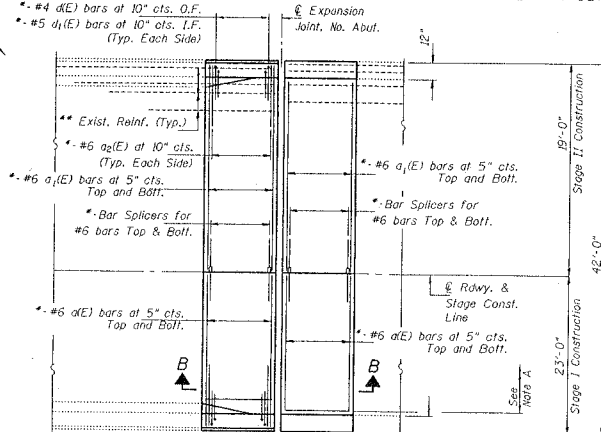
STATE OF ILLINOIS
DEPARTMENT OF TRANSPORTATION

DATE	BY	CHKD	APP'D	SHEET NO.
3/30	DDK	W	33	7 SHEETS

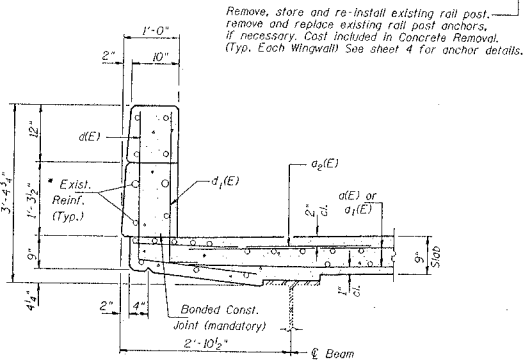
Hatched areas indicate concrete sections to be removed and replaced. Perimeters of concrete removal areas shall be saw cut 3/4" prior to the removal of concrete.



PARTIAL PLAN SHOWING CONCRETE REMOVAL AT NORTH ABUTMENT

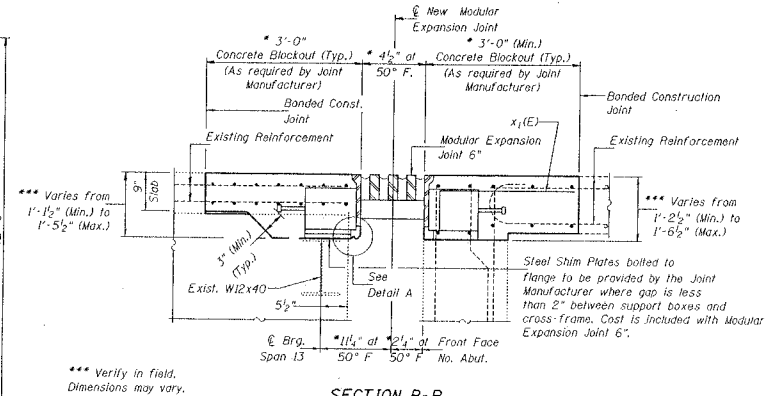


PARTIAL PLAN SHOWING CONCRETE REPLACEMENT AT NORTH ABUTMENT



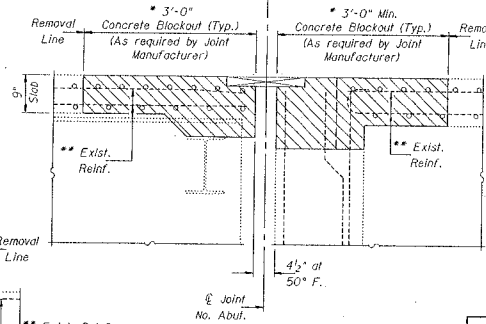
SECTION THRU CURB

Remove, store and re-install existing rail post, remove and replace existing rail post anchors, if necessary. Cost included in Concrete Removal. (Typ. Each Wingwall) See sheet 4 for anchor details.

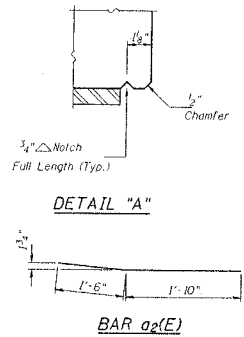


SECTION B-B
(Cut or bend reinforcement bars as required to miss support boxes by 1/2")

Note A:
x1(E) bars Lapped with Exist. Longitudinal Bars in Approach



SECTION A-A



DETAIL "A"

BAR a2(E)

BILL OF MATERIAL

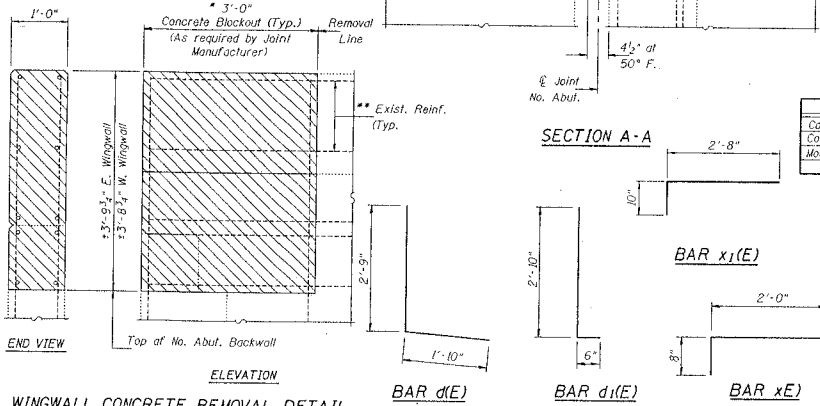
ITEM	UNIT	QUANTITY
Concrete Removal	Cu. Yd.	9.1
Concrete Superstructure	Cu. Yd.	9.1
Modular Expansion Joint 6"	Foot	40

**CONCRETE REMOVAL AND REPLACEMENT
NORTH ABUTMENT
LaGRANGE ROAD (U.S. 12/20/45)
OVER SANITARY & SHIP CANAL
I&M CANAL & ICG RAILROAD
F.A. RTE. 124
COOK COUNTY
S.N. 016-2468 (N.B.)**

DESIGNED	V.H.V.
CHECKED	P.S.J.
DRAWN	Dierbart
CHECKED	V.H.V. P.S.J.

June 25, 2002
EXAMINED *John A. Morris*
PASSED
ENGINEER IN STRUCTURAL SERVICE
DIVISION OF BRIDGES AND STRUCTURES

WINGWALL CONCRETE REMOVAL DETAIL



ELEVATION

BAR d1(E)

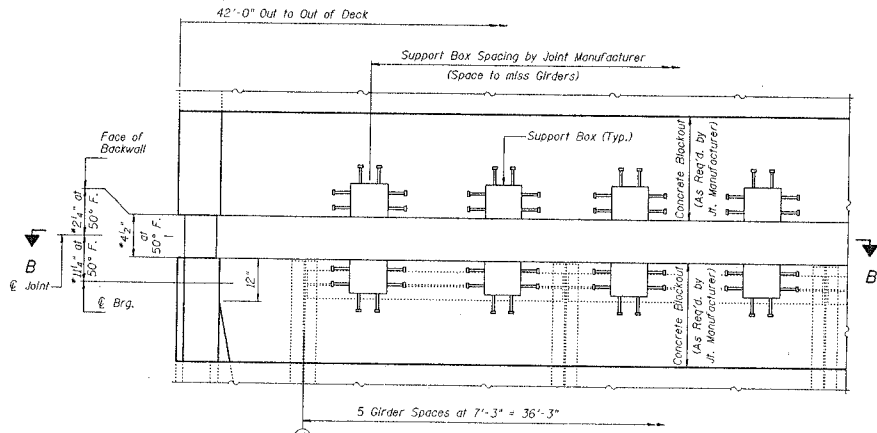
BAR d1(E)

BAR x1(E)

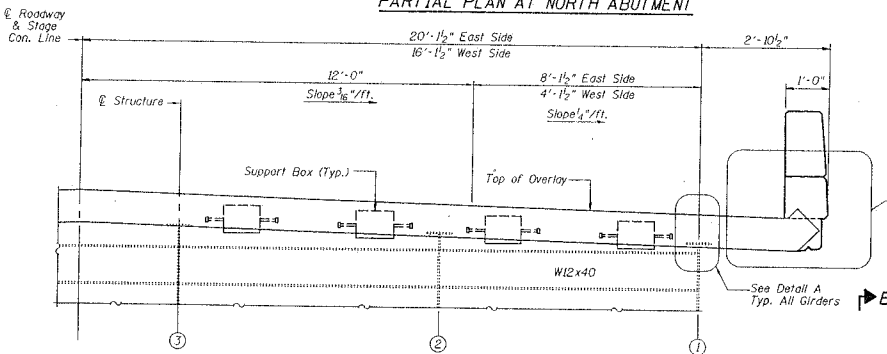
BAR x(E)

STATE OF ILLINOIS
DEPARTMENT OF TRANSPORTATION

PROJECT NO.	SECTION	DATE	BY	CHKD.	SHEET NO. 4
330	COOK	4/8	JJA		7 SHEETS
FILE NO. (REV. NO.)	KLINGSTUBBINS	FILE NO. (REV. NO.)			

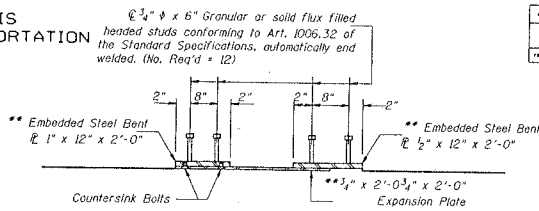


PARTIAL PLAN AT NORTH ABUTMENT



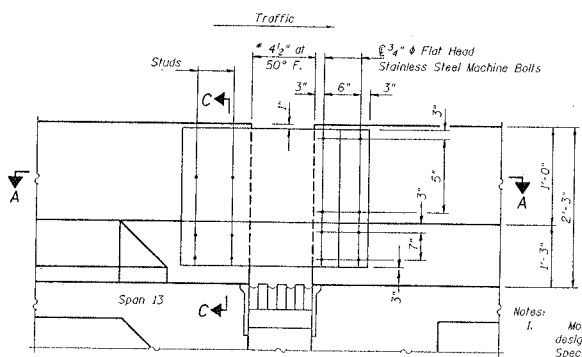
ELEVATION - PARAPET SLIDING PLATE
AT NORTH ABUTMENT

* Adjust as required by Joint Manufacturer.



SECTION A-A

** Expansion Plate and Embedded Plates shall be galvanized according to AASHTO M111. Cost Included with Modular Expansion Joint 6"

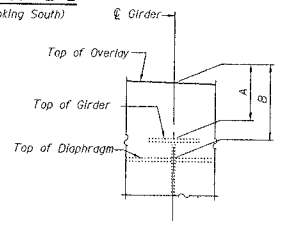


SECTION C-C

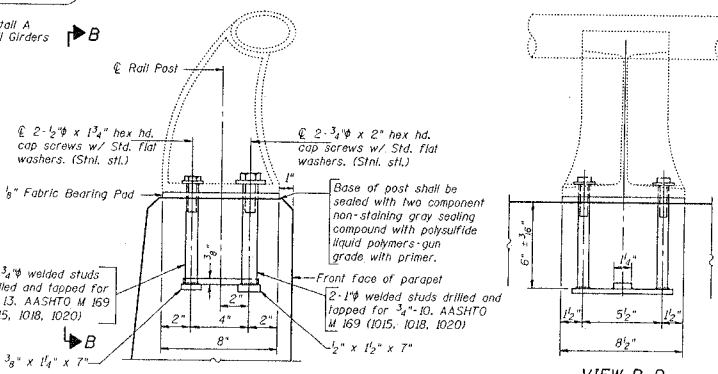
- Notes:
1. Modular Expansion Joint shall be designed according to the latest ASTM Specifications for HS20 Loading with 30X Impact and for minimum movement of ±3" (Total of 6").
 2. The Modular Expansion Joint shall be either MAURER model "D" by D.S. Brown Co., Wabo model "D" by Watson Bowman Acme Corp., or the ROBEX LG system by TechStar, Inc.
 3. Joint shall be fabricated and installed according to the manufacturer's recommendations and as approved by the Engineer.
 4. Joint shall be fabricated to conform to the Roadway Profile and Cross-Slopes.
 5. Cost of all hardware and installation of Steel Bearing Shim plates and additional reinforcement required to anchor the joint to the slab shall be included with "Modular Expansion Joint 6".
 6. The inorganic zinc rich primer/acrylic/acrylic paint system shall be used for shop and field painting of new structural steel except no top coat required in non-exposed areas. The color of the acrylic finish coat shall be Gray, Munsell No. 5B 7/1. See Special Provisions "Cleaning and Painting New Metal Structures".

Location	Top of Overlay Elevation	At Bearing
Spa.	Bk. Abut.	Dim "A" Dim "B"
Beam 1	624.574	624.521 9'-2" 14'-2"
Beam 2	624.706	624.656 9'-2" 16'-2"
Beam 3	624.822	624.769 9'-2" 17'-2"
Beam 4	624.799	624.706 9'-2" 16'-2"
Beam 5	624.641	624.589 9'-2" 15'-2"
Beam 6	624.490	624.439 9'-2" 13'-2"

SECTION B-B
(Looking South)



DETAIL A



RAIL POST ANCHOR DETAIL

VIEW B-B

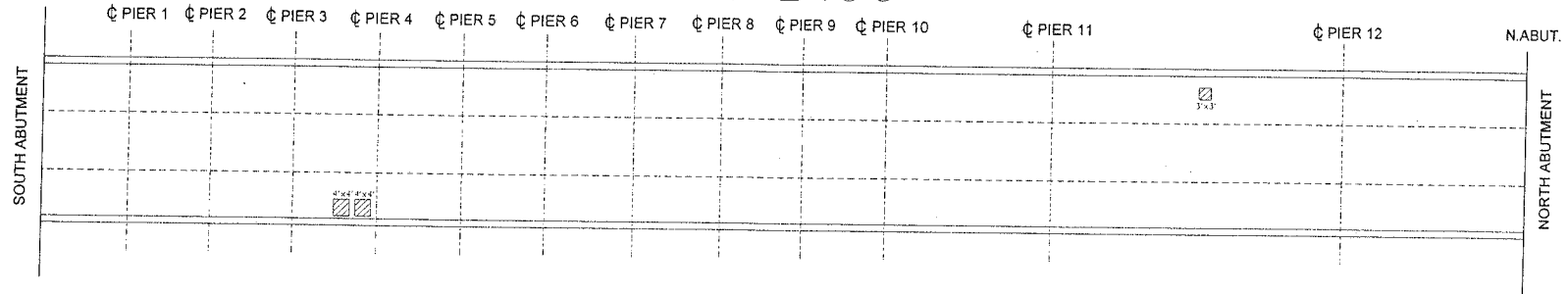
As an alternate, threaded anchor rods may be epoxy grouted in drilled holes in accordance with Section 584 of the Standard Specifications.

DESIGNED	V.H.V.	EXAMINED	John A. Morris DIRECTOR OF STRUCTURAL SERVICES
CHECKED	P.S.J.	PASSED	
DRAWN	Dierbert	CHANGES OF SHEETS AND STRUCTURES	
CHECKED	V.H.V. P.S.J.		

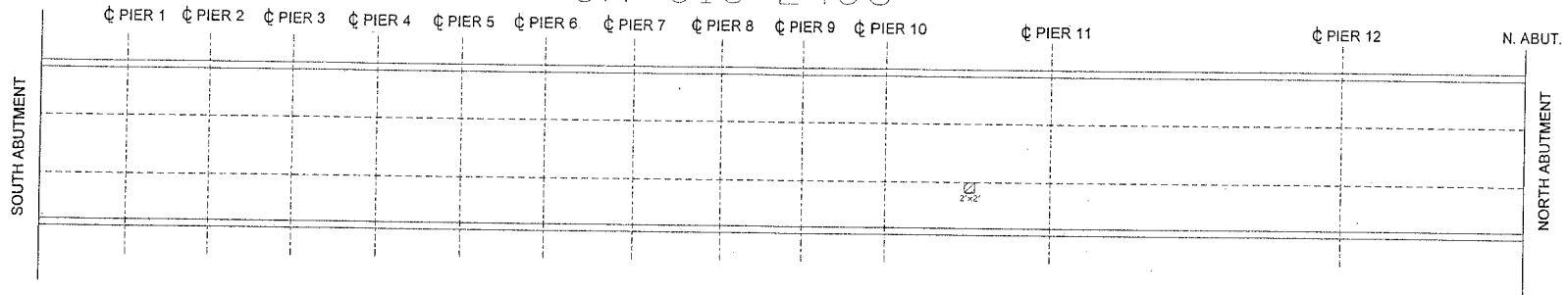
MODULAR JOINT DETAILS
NORTH ABUTMENT
LaGRANGE ROAD (U.S. 12/20/45)
OVER SANITARY & SHIP CANAL
I&M CANAL & ICG RAILROAD
F.A. RTE. 124
COOK COUNTY
S.N. 016-2468 (N.B.)

FILE NO.	SECTION	COUNTY	TOTAL SHEET
330	2001-131-1	COOK	48 34
STA.			TO STA.
FED. ROAD DIST. NO. 1 ILLINOIS FED. AID PROJECT			

SN 016-2406



SN 016-2468



NOTES

DRAWING NOT TO SCALE

THE ENGINEER SHALL DETERMINE IN THE FIELD AND MARK THE ACTUAL DECK REPAIR LOCATIONS ON THE AS-BUILT PLANS

PATCHING LOCATIONS DETERMINED ON MARCH 20, 2002 BY M. PALELLO

SN:016-2406 APPROX. 41 S.F. OF PATCHING
SN:016-2468 APPROX. 4 S.F. OF PATCHING

PARTIAL DEPTH PATCHING

REVISIONS	
NAME	DATE

ILLINOIS DEPARTMENT OF TRANSPORTATION

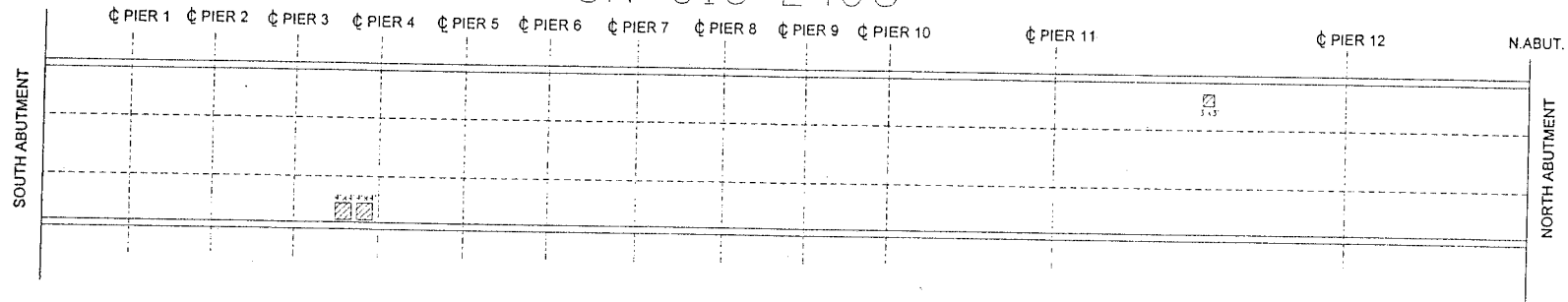
PARTIAL DEPTH PATCHING
PLAN SHEET
SN: 016-2406
SN: 016-2468

SCALE:
DATE

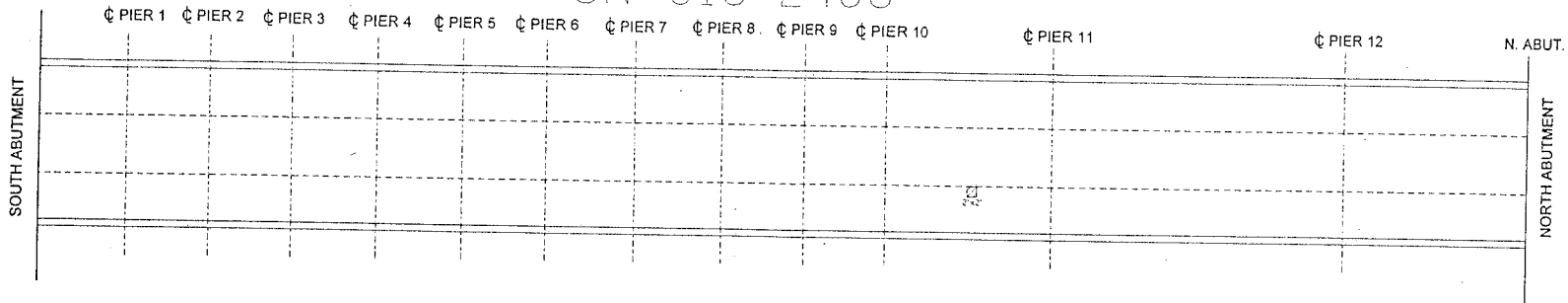
DRAWN BY
CHECKED BY

SECTION	COUNTY	TOTAL SHEETS
330 I 2001-131-1	COOK	48 1 34
STA. TO STA.		
FED. ROAD DIST. NO. 1 ILLINOIS FED. AID PROJECT		

SN 016-2406



SN 016-2468



NOTES

DRAWING NOT TO SCALE

THE ENGINEER SHALL DETERMINE IN THE FIELD AND MARK THE ACTUAL DECK REPAIR LOCATIONS ON THE AS-BUILT PLANS

PATCHING LOCATIONS DETERMINED ON MARCH 20, 2002 BY M. PALELLO

SN 016-2406 APPROX. 41 S.F. OF PATCHING
SN 016-2468 APPROX. 4 S.F. OF PATCHING

PARTIAL DEPTH PATCHING

REVISIONS	
NAME	DATE

ILLINOIS DEPARTMENT OF TRANSPORTATION

PARTIAL DEPTH PATCHING
PLAN SHEET
SN: 016-2406
SN: 016-2468

SCALE: _____
DATE _____ DRAWN BY _____
CHECKED BY _____