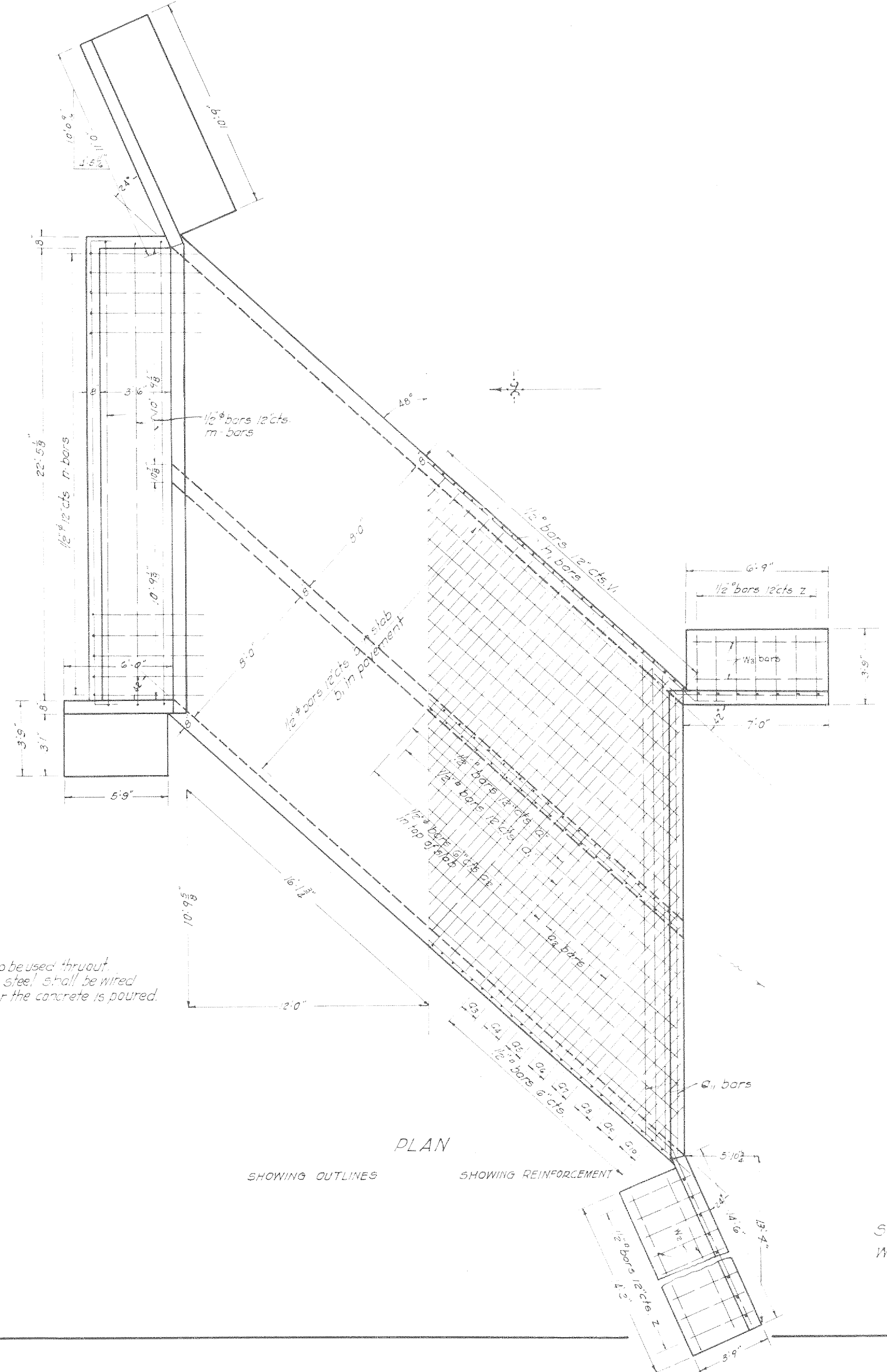
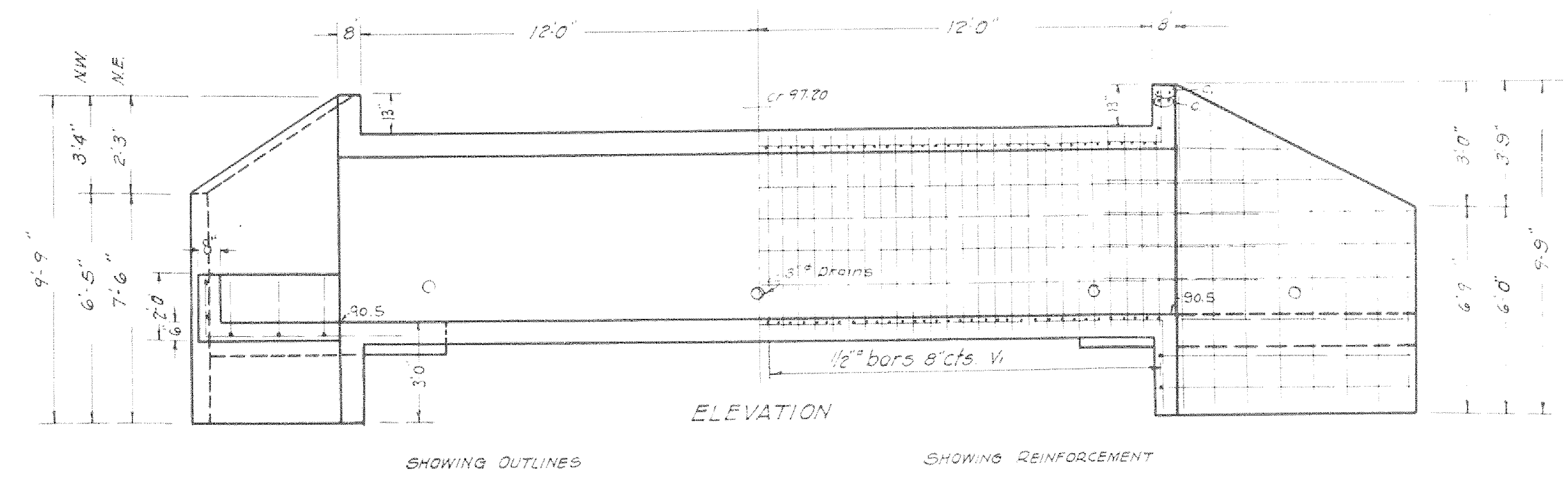
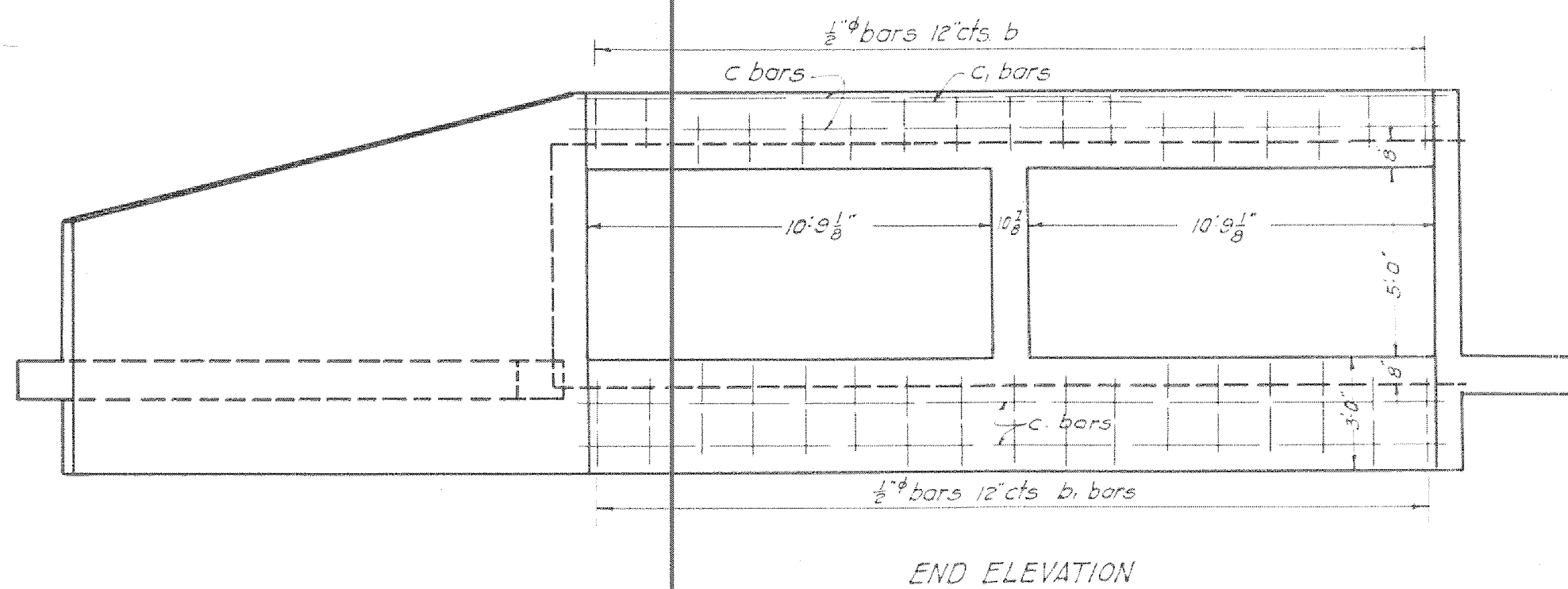
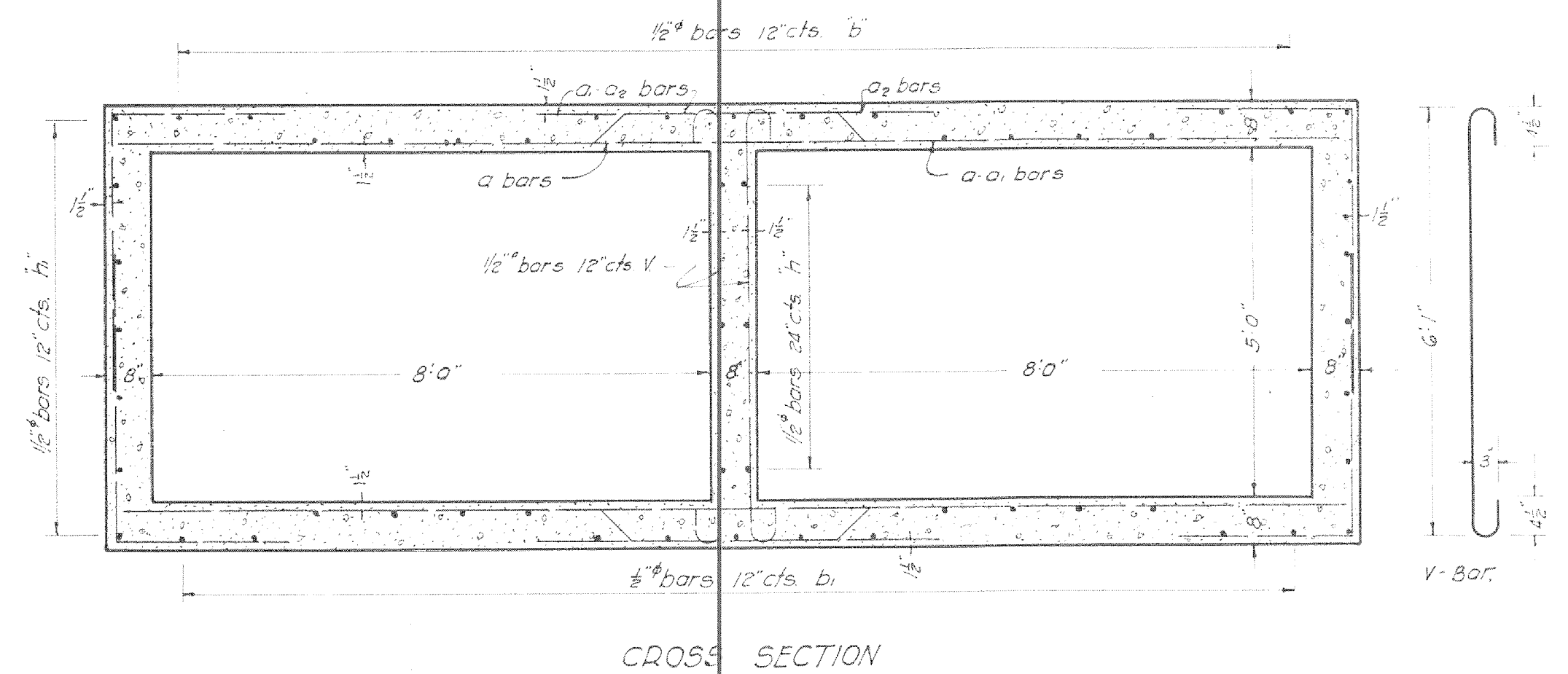
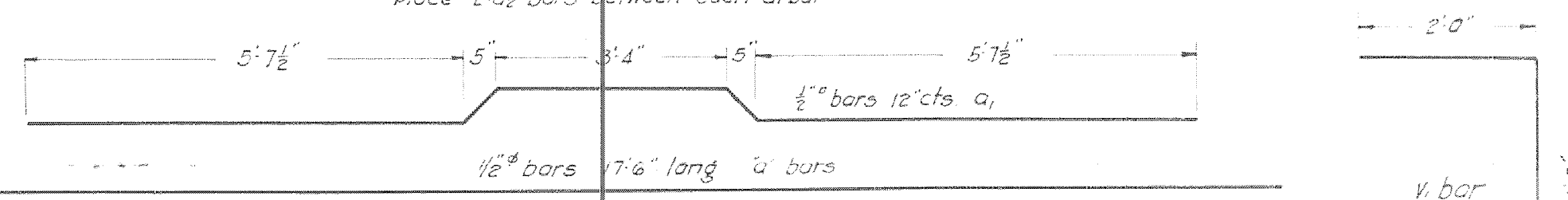
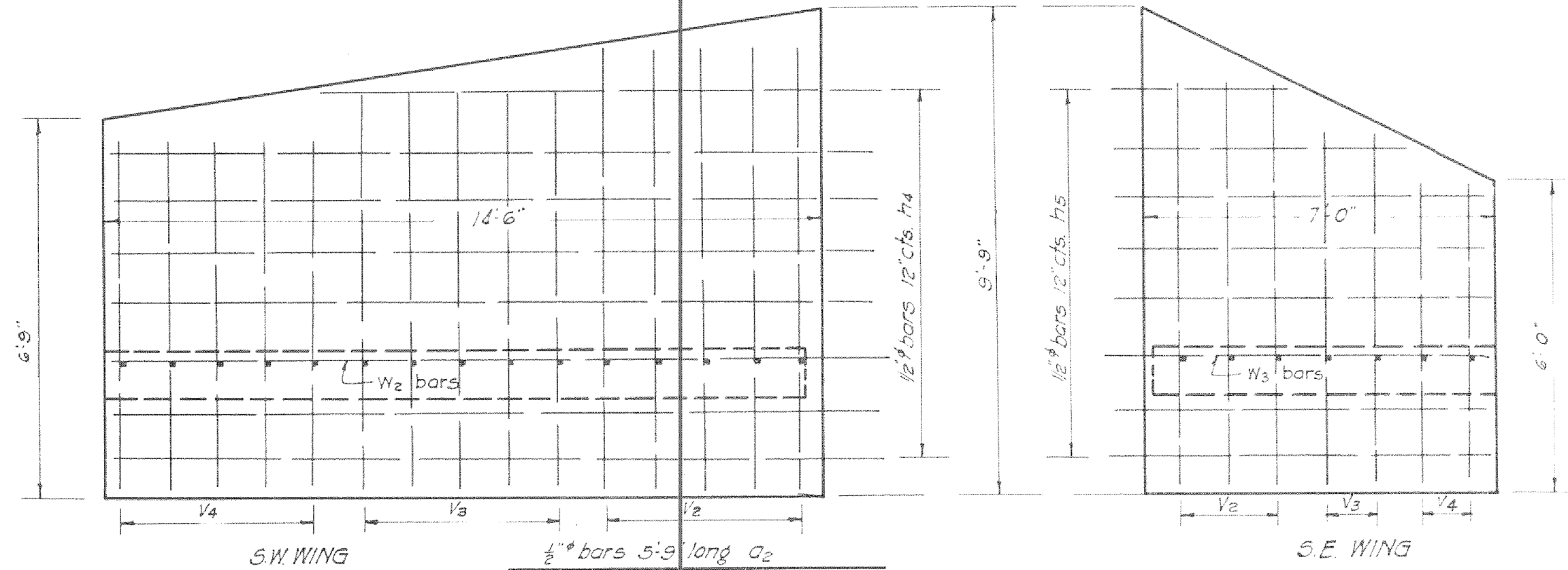
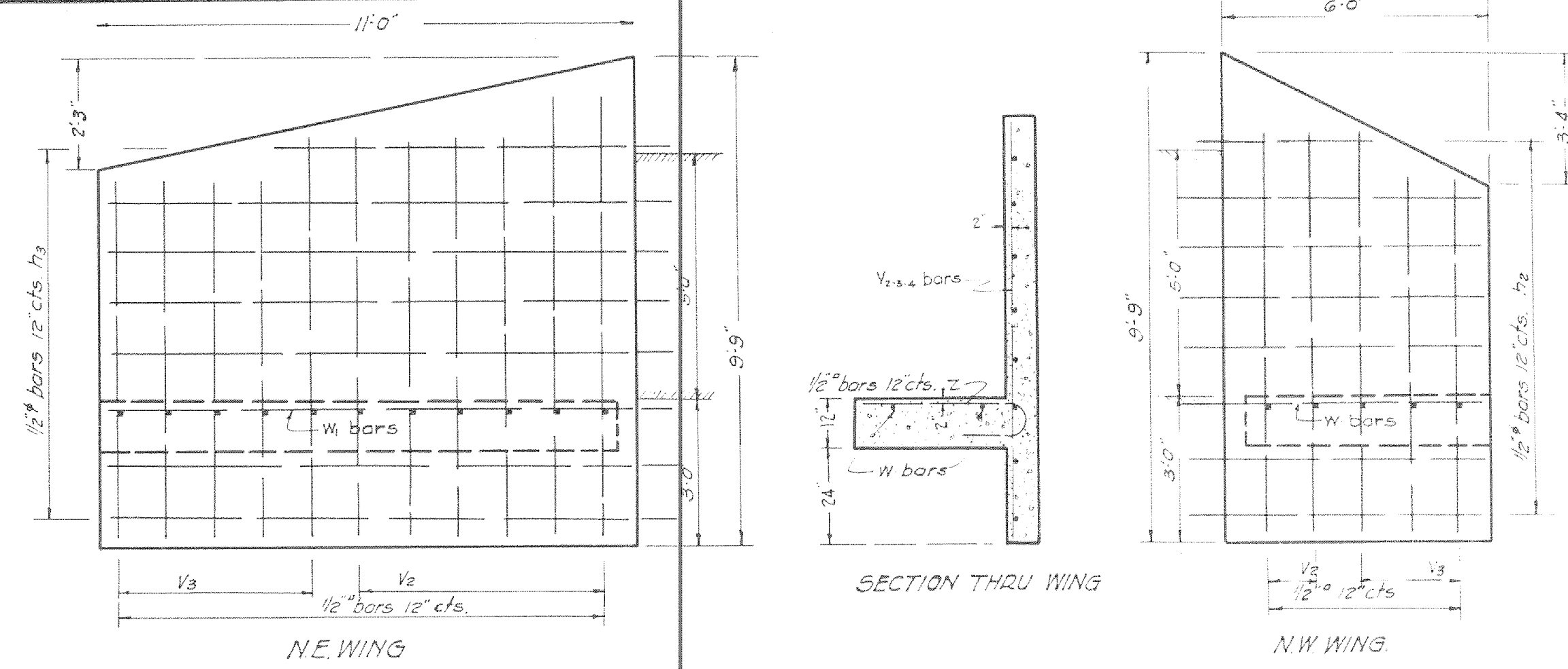


BILL OF MATERIAL

Bar	No	Size	Length
a	44	1/2"	17'-6"
a <sub>1</sub>	44	"	15'-9"
a <sub>2</sub>	124	"	5'-9"
c <sub>3</sub>	12	1/2"	14'-0"
c <sub>4</sub>	12	"	12'-6"
c <sub>5</sub>	12	"	10'-9"
c <sub>6</sub>	12	"	9'-3"
c <sub>7</sub>	12	"	7'-6"
c <sub>8</sub>	12	"	5'-9"
c <sub>9</sub>	12	"	4'-0"
c <sub>10</sub>	12	"	2'-6"
c <sub>11</sub>	16	"	28'-6"
b	34	1/2"	18'-4"
b <sub>1</sub>	34	"	19'-6"
c	10	"	23'-3"
n	4	1/2"	7'-0"
n <sub>1</sub>	12	1/2"	18'-0"
n <sub>2</sub>	28	"	20'-8"
n <sub>3</sub>	8	"	7'-9"
n <sub>4</sub>	8	"	13'-0"
n <sub>5</sub>	8	"	17'-0"
m	5	"	26'-6"
m <sub>1</sub>	23	"	7'-0"
v	66	1/2"	7'-3"
v <sub>1</sub>	200	"	6'-0"
v <sub>2</sub>	16	"	8'-0"
v <sub>3</sub>	16	"	7'-0"
v <sub>4</sub>	7	"	6'-0"
w	2	1/2"	5'-6"
w <sub>1</sub>	2	"	10'-6"
w <sub>2</sub>	2	"	13'-9"
w <sub>3</sub>	2	"	6'-6"
z	39	1/2"	4'-9"
Concrete	615 cu yds		
Steel	6330 lbs		



Note:  
 1) X' concrete to be used thruout  
 All reinforcing steel shall be wired  
 securely in place before the concrete is poured.

15-27-10  
 S.A. R.T. SEC. 12 B M.F.T.  
 WINNEBAGO COUNTY