

STATE OF ILLINOIS
DEPARTMENT OF TRANSPORTATION

F.A.P. RTE.	SECTION	COUNTY	TOTAL SHEETS	SHEET NO.
301	(81-3B-1) BDR	STEPHENSON	11	1
		ILLINOIS	CONTRACT NO. 64R	32

FOR INDEX OF SHEETS, SEE SHEET NO. 2

PROPOSED HIGHWAY PLANS

FAP 301 (US 20 WB)
SECTION (18BR)RS
PROJECT
MAINTENANCE OF TRAFFIC
STEPHENSON COUNTY

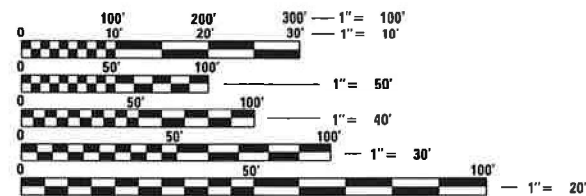
C-92-005-22



PROJECT LOCATION
SN 089-0074
OVER SUMNER CREEK



exp 11/30/2021
Michael S. Bunting
For Maintenance of Traffic



FULL SIZE PLANS HAVE BEEN PREPARED USING STANDARD ENGINEERING SCALES. REDUCED SIZED PLANS WILL NOT CONFORM TO STANDARD SCALES. IN MAKING MEASUREMENTS ON REDUCED PLANS, THE ABOVE SCALES MAY BE USED.

J.U.L.I.E.
JOINT UTILITY LOCATION INFORMATION FOR EXCAVATORS
1-800-892-0123
OR 811

PROJECT ENGINEER: SCOTT WYATT
PROJECT MANAGER: MAHMOUD ETEMADI

CONTRACT NO. 64R 32

GROSS LENGTH = x.xx FT. = x.xxx MILE
NET LENGTH = x.xx FT. = x.xxx MILE

STATE OF ILLINOIS
DEPARTMENT OF TRANSPORTATION

SUBMITTED October 26 2021

Thomas Alford
REGIONAL ENGINEER

December 10 2021
[Signature]
ENGINEER OF DESIGN AND ENVIRONMENT

December 10 2021
Stephen M. L...
DIRECTOR OF HIGHWAYS PROJECT IMPLEMENTATION

PRINTED BY THE AUTHORITY
OF THE STATE OF ILLINOIS

0013
100% STATE

CODE NO.	ITEM	UNIT	TOTAL QUANTITY
67100100	MOBILIZATION	L SUM	1
70100205	TRAFFIC CONTROL AND PROTECTION, STANDARD 701401	EACH	1
70100207	TRAFFIC CONTROL AND PROTECTION, STANDARD 701402	EACH	1
70107006	PAVEMENT MARKING BLACKOUT TAPE, 6"	FOOT	1,250
70300150	SHORT TERM PAVEMENT MARKING REMOVAL	SQ FT	2,408
70301720	TEMPORARY PAVEMENT MARKING-LINE-4"-TYPE IV	FOOT	5,665
70400100	TEMPORARY CONCRETE BARRIER	FOOT	475
70400200	RELOCATE TEMPORARY CONCRETE BARRIER	FOOT	475
70600250	IMPACT ATTENUATORS, TEMPORARY (NON- REDIRECTIVE), TEST LEVEL 3	EACH	1
70600350	IMPACT ATTENUATORS, RELOCATE (NON- REDIRECTIVE), TEST LEVEL 3	EACH	1
* 78200005	GUARDRAIL REFLECTORS, TYPE A	EACH	20
* 78200010	BARRIER WALL REFLECTORS, TYPE B	EACH	16
42001300	PROTECTIVE COAT	SQ YD	82.1
50300225	CONCRETE STRUCTURES	CU YD	4.9
50300255	CONCRETE SUPERSTRUCTURE	CU YD	35.6
50800205	REINFORCEMENT BARS, EPOXY COATED	POUND	5,920
50800515	BAR SPLICERS	EACH	27
50800530	MECHANICAL SPLICERS	EACH	120
Z0016200	DECK SLAB REPAIR (PARTIAL)	SQ YD	5.0
Z0004552	APPROACH SLAB REMOVAL	SQ YD	82.1

*= SPECIALTY ITEM

MODEL: D:\p1\h1\...
 FILE NAME: P:\projects\Miscellaneous\2011-1\CAD\Bldg01_MDT13-2011-1_Rldg01t-500.dgn

HAMILTON CONSULTING ENGINEERS, INC.
 3230 Executive Drive, Joliet, Illinois 60431
 Ph: (815) 730-3444 Fax: (815) 730-6703
 IL LICENSE NO. 184-003005
 © 2020 HAMILTON CONSULTING ENGINEERS, INC.

USER NAME = mibulting	DESIGNED - MGB	REVISED -
PLOT SCALE = 2.0000' / in.	DRAWN - DWS	REVISED -
PLOT DATE = 10/20/2021	CHECKED - HJH	REVISED -
	DATE -	REVISED -

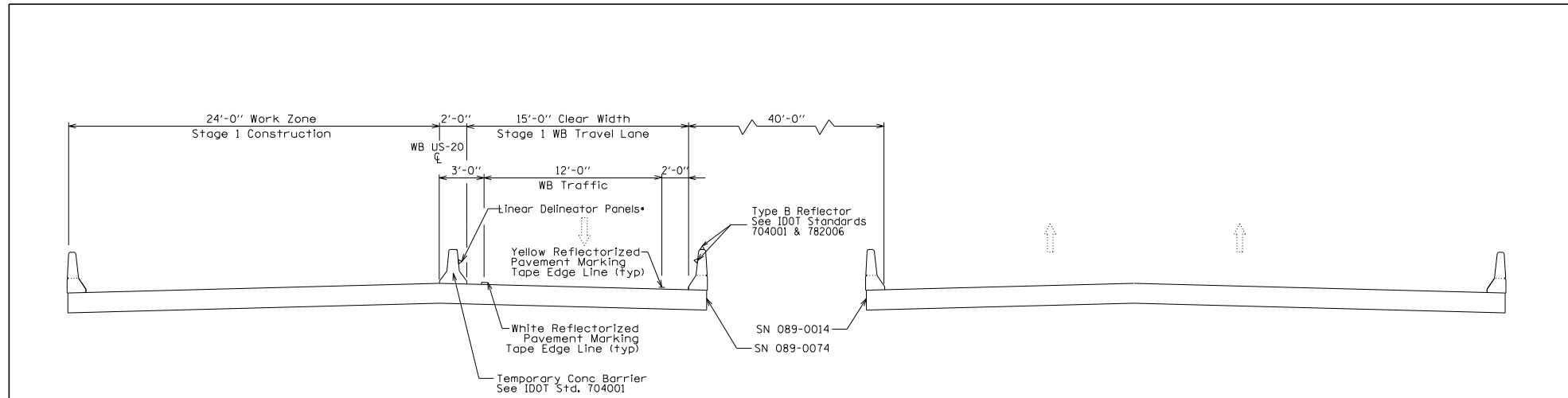
STATE OF ILLINOIS
DEPARTMENT OF TRANSPORTATION

US 20 CROSSING SUMNER CREEK
SCHEDULE OF QUANTITIES

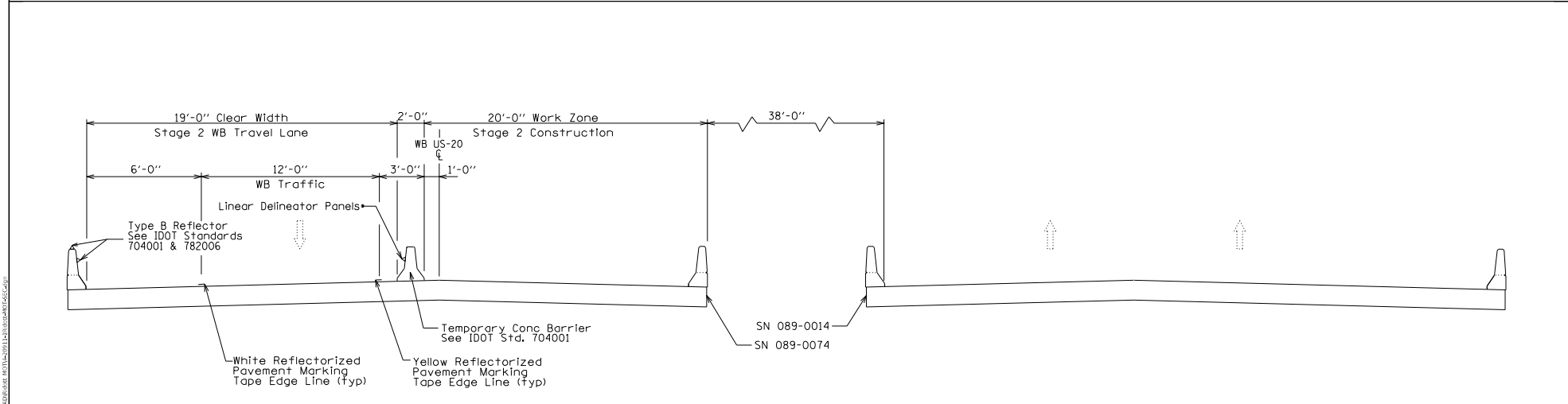
SCALE: SHEET 3 OF 8 SHEETS STA. TO STA.

F.A.P. RTE.	SECTION	COUNTY	TOTAL SHEETS	SHEET NO.
301	(18BR)RS	STEPHENSON	3	3
CONTRACT NO. 64R32			ILLINOIS FED. AID PROJECT	

REV. 12/10/21 REV. 12/7/21 REV. 12/1/21 REV. 11/30/21



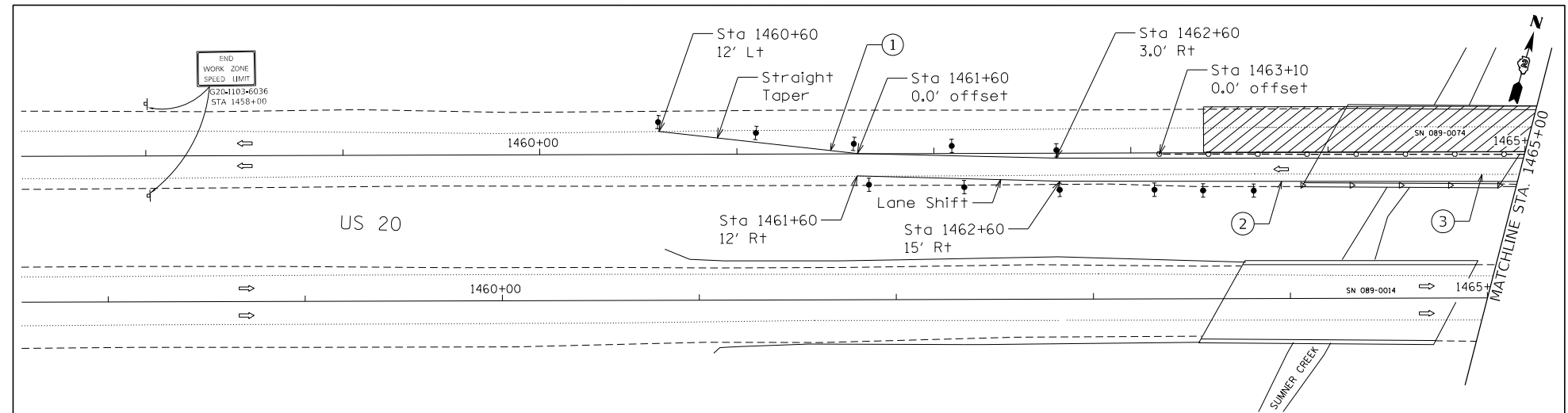
STAGE 1
(LOOKING EAST)



STAGE 2
(LOOKING EAST)

*Linear Delineator Panels included in Items "Temporary Concrete Barrier" and "Relocate Temporary Concrete Barrier".

HAMILTON CONSULTING ENGINEERS, INC. <small>320 Eastwood Blvd., Suite 1000, Bloomington, IL 61701 Tel: (309) 734-4444 Fax: (309) 734-7333 1100 N. Lincoln Ave., Suite 1000, Decatur, IL 62521</small>	USER NAME - m1041910	DESIGNED - MGB	REVISED -	STATE OF ILLINOIS DEPARTMENT OF TRANSPORTATION	US 20 CROSSING SUMNER CREEK STAGING TYPICAL SECTIONS	F.A.P. RTE.	SECTION	COUNTY	TOTAL SHEET		
	PLOT SCALE - 800/0000 1" = 100'	DRAWN - MGB	REVISED -			301	(188)URS	STEPHENSON	11	4	
	PLOT DATE - 10/20/2021	CHECKED -	REVISED -			SCALE: NTS		SHEET 4 OF 8 SHEETS STA.		TO STA.	
		DATE	REVISED -							ILLINOIS HIGHWAY PROJECT	
						CONTRACT NO. 64R32					



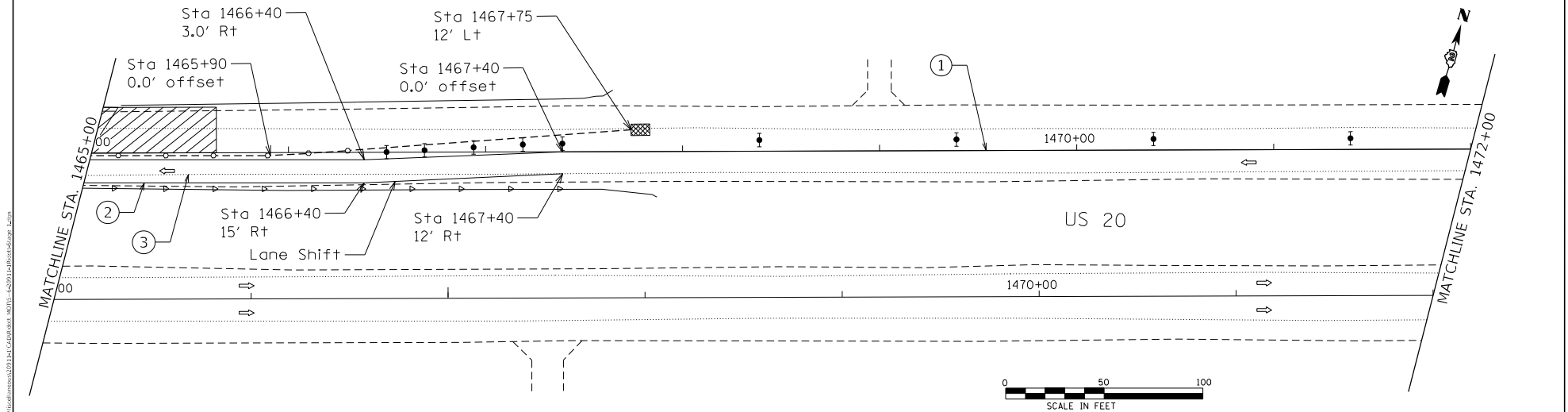
NOTE: All barricades, drums, vertical panels and reflectors shall be offset and spaced in accordance with IDOT Standards 701400 and 701402, WB centerline stationing used to locate MOT items.

SYMBOLS

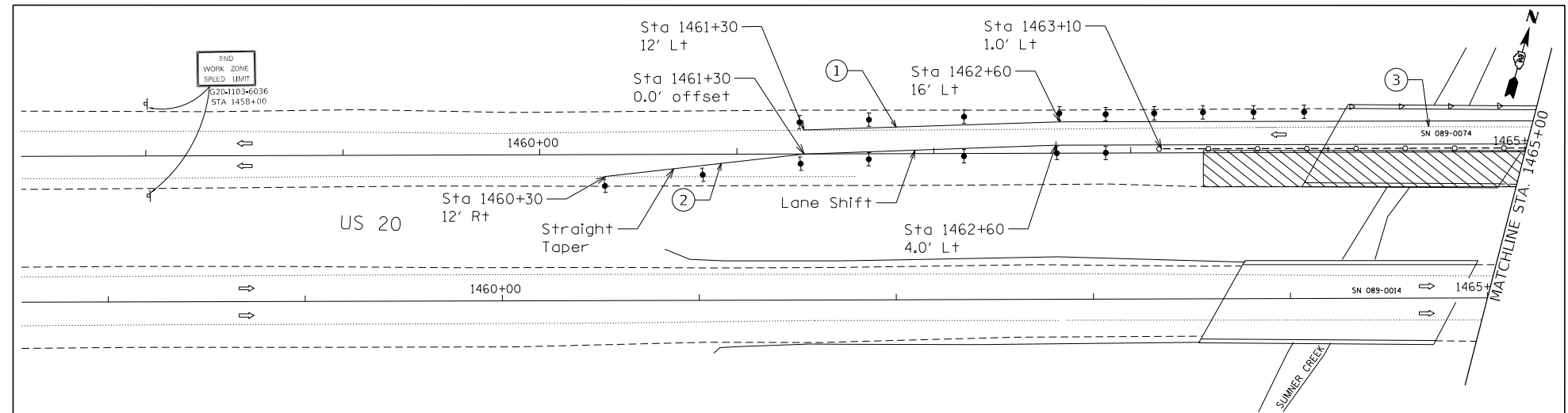
- Work area
- Direction indicator barricade with steady burn monodirectional light, See IDOT Std 701901.
- Linear delineator panels on 25' centers.
- Monodirectional reflector, See IDOT Std 782006.
- Temporary impact attenuator, non-redirective, test level 3.
- Arrow board located in accordance with IDOT Stds 701400 and 701402
- Trailer mounted sign
- Sign
- Type II or vertical barricade, or drum, with monodirectional steady-burn light, See IDOT Std 701901.
- Temp. concrete barrier, See IDOT Std 704001.

PAVEMENT MARKING CALLOUTS

- 1 Pavement Marking Tape, Type IV, 4" White
- 2 Pavement Marking Tape, Type IV, 4" Yellow
- 3 Pavement Marking Blackout Tape, 6"



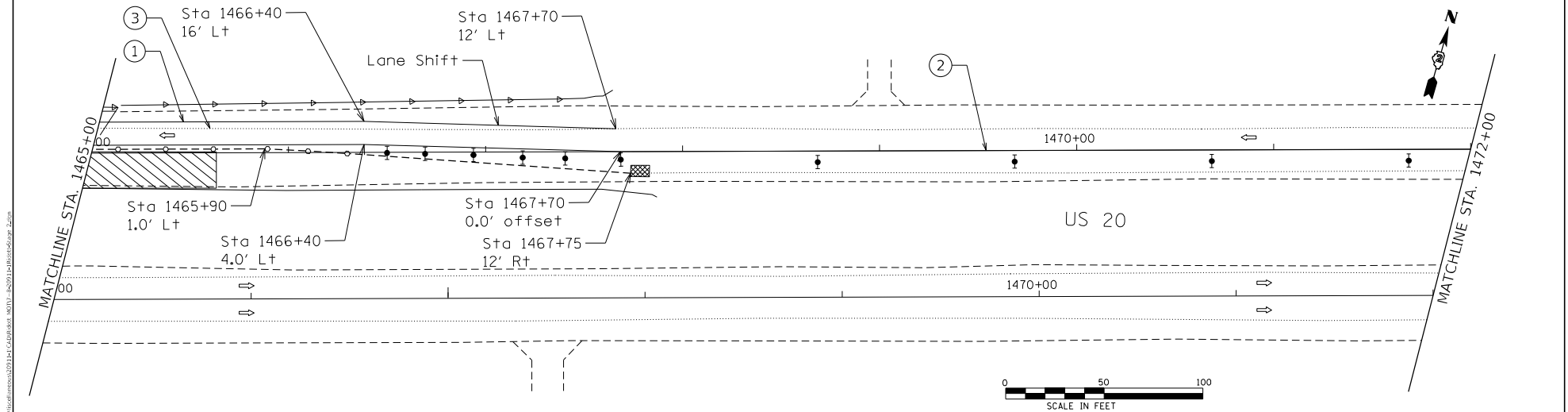
HAMILTON CONSULTING ENGINEERS, INC. <small>2229 Eastman Drive, Joliet, Illinois 60431 Tel: (815) 731-1100 Fax: (815) 731-0700 www.hamilton-engineers.com</small>	USER NAME = mluufiq	DESIGNED -	REVISED -	STATE OF ILLINOIS DEPARTMENT OF TRANSPORTATION	US 20 CROSSING SUMMER CREEK TRAFFIC CONTROL STAGE 1 PLAN SHEET	SCALE = 1"=50'	SHEET 5 OF 8 SHEETS	STA. 1457+50 TO STA. 1472+00	ILLINOIS TRB AND PROJECT
	PLOT SCALE = 3/8"=1'-0" PLOT DATE = 10/20/2021	DRAWN - CHECKED - DATE -	REVISED - REVISED - REVISED -			SECTION 11BBR/RS COUNTY STEPHENSON TOTAL SHEETS 11 SHEETS 5 CONTRACT NO. 64R32			



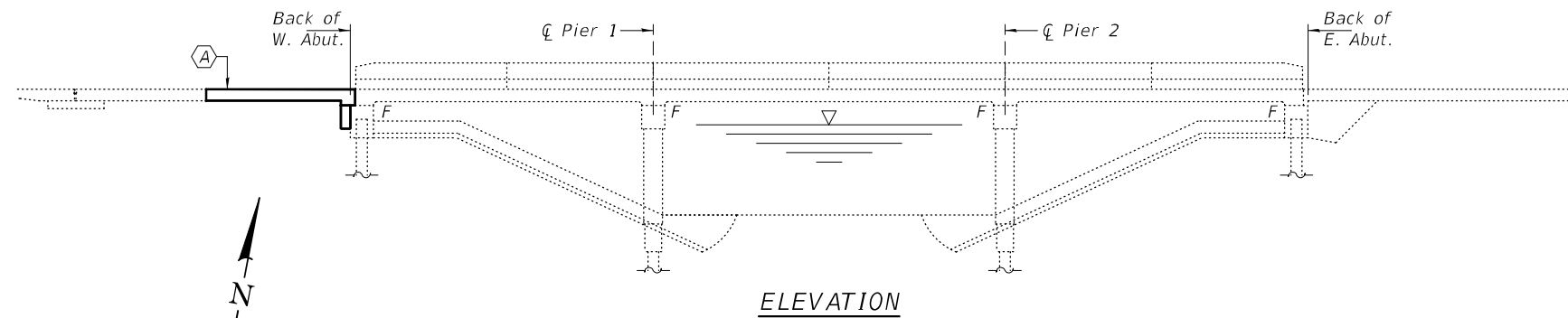
NOTE: All barricades, drums, vertical panels and reflectors shall be offset in accordance with IDOT Standards 701400 and 701402, WB centerline stationing used to locate MOT items.

SYMBOLS	
Work area	Arrow board located in accordance with IDOT Stds 701400 and 701402
Direction indicator barricade with steady burn monodirectional light, See IDOT Std 701901.	Trailer mounted sign
Linear delineator panels on 25' centers.	Sign
Monodirectional reflector, See IDOT Std 782006.	Type II or vertical barricade, or drum, with monodirectional steady-burn light, See IDOT Std 701901.
Temporary impact attenuator, non-redirective, test level 3.	Temp. concrete barrier, See IDOT Std 704001.

PAVEMENT MARKING CALLOUTS	
①	Pavement Marking Tape, Type IV, 4" White
②	Pavement Marking Tape, Type IV, 4" Yellow
③	Pavement Marking Blackout Tape, 6"



HAMILTON CONSULTING ENGINEERS, INC. <small>2201 Eastman Drive, Suite 100, Peoria, IL 61611 PEORIA, IL 61611 309.696.1111 309.696.1112</small>	USER NAME = mduffg	DESIGNED -	REVISED -	STATE OF ILLINOIS DEPARTMENT OF TRANSPORTATION	US 20 CROSSING SUMMER CREEK TRAFFIC CONTROL STAGE 2 PLAN SHEET		<table border="1"> <tr> <th>DATE</th> <th>BY</th> <th>REASON</th> </tr> <tr> <td></td> <td></td> <td></td> </tr> </table>	DATE	BY	REASON				<table border="1"> <tr> <th>SECTION</th> <th>COUNTY</th> <th>TOTAL SHEETS</th> </tr> <tr> <td>11BBR1RS</td> <td>STEPHENSON</td> <td>11</td> </tr> </table>	SECTION	COUNTY	TOTAL SHEETS	11BBR1RS	STEPHENSON	11
	DATE	BY	REASON																	
	SECTION	COUNTY	TOTAL SHEETS																	
11BBR1RS	STEPHENSON	11																		
PLOT SCALE = 3/8"=1'-0"	CHECKED -	REVISED -	SCALE: 1"=50'	SHEET 7 OF 8 SHEETS	STA. 1457+50 TO STA. 1472+00	CONTRACT NO. 64R32														
PLOT DATE = 10/20/2021	DATE -	REVISED -																		

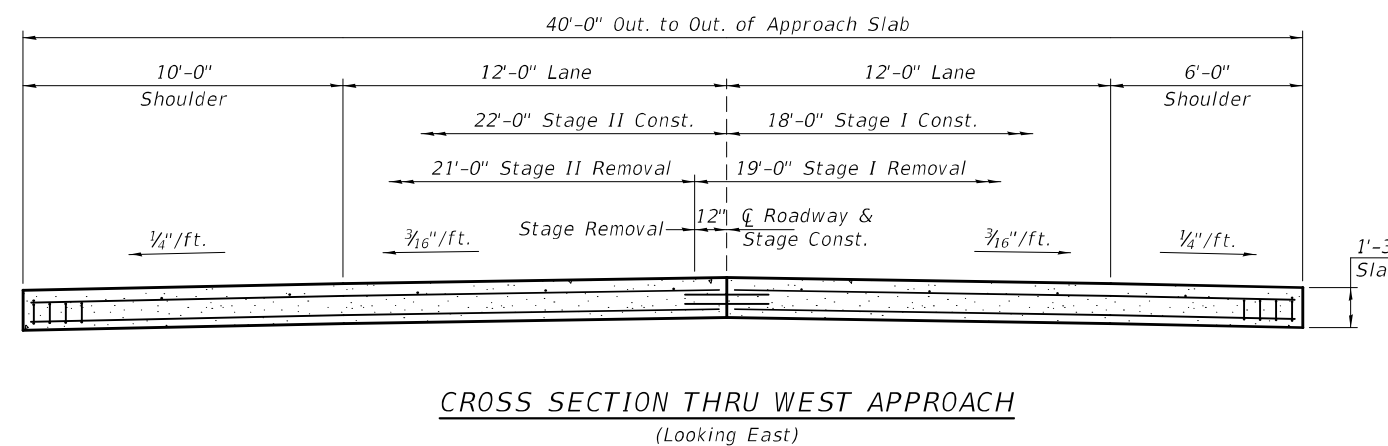
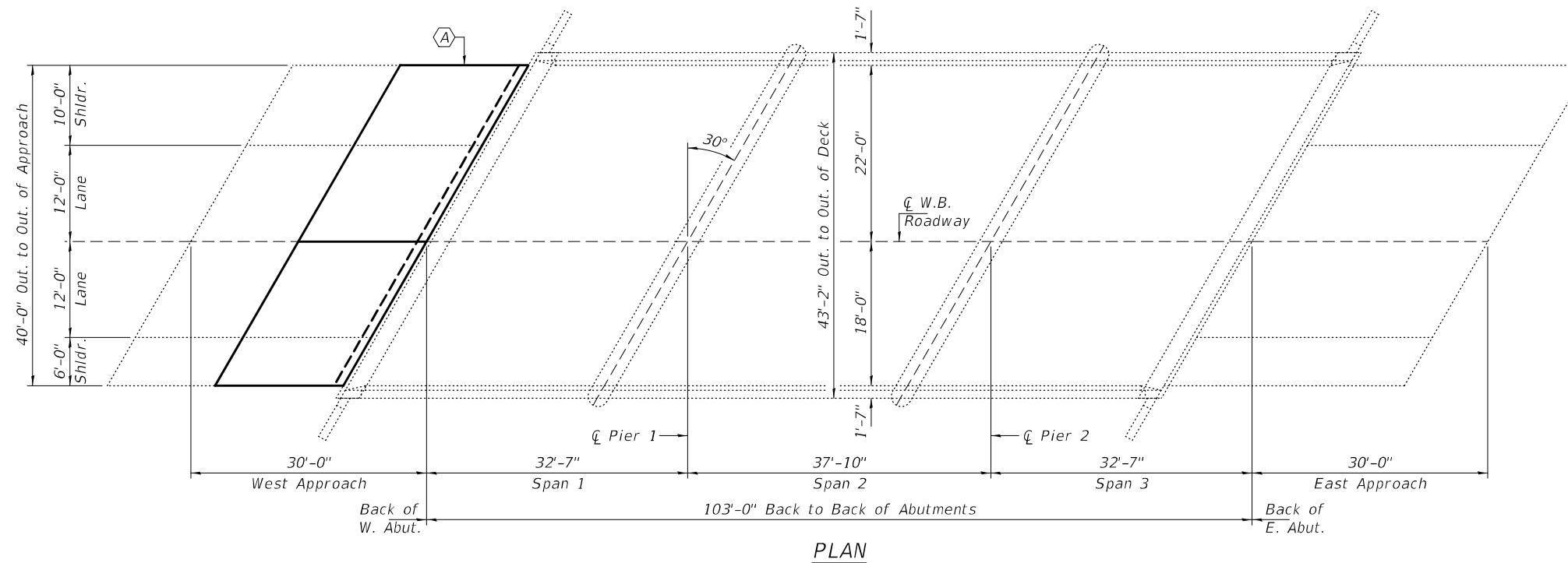


GENERAL NOTES

Plan dimensions and details relative to existing plans are subject to nominal construction variations. The Contractor shall field verify existing dimensions and details affecting new construction and make necessary approved adjustments prior to construction or ordering of materials. Such variations shall not be cause for additional compensation for a change in scope of the work, however, the Contractor will be paid for the quantity actually furnished at the unit price bid for the work. Reinforcement bars designated (E) shall be epoxy coated.

Existing reinforcement bars extending into the removal area shall be cleaned, straightened and incorporated into the new construction. Any reinforcement bars that are damaged during concrete removal shall be replaced with an approved bar splicer or anchorage system. Cost included with Concrete Removal.

The deck surface shall have its final finish tined according to Article 420.09(e)(1) of the Standard Specifications. Cost included with Concrete Superstructure.



TOTAL BILL OF MATERIAL

ITEM	UNIT	QUANTITY
Approach Slab Removal	Sq. Yd.	82.1
Concrete Superstructure	Cu. Yd.	35.6
Concrete Structures	Cu. Yd.	4.9
Reinforcement Bars, Epoxy Coated	Pound	5920
Mechanical Splicers	Each	120
Bar Splicers	Each	27
Protective Coat	Sq. Yd.	82.1
* Deck Slab Repair (Partial Depth)	Sq. Yd.	5.0

* Quantity is estimated, actual location and size of patches to be determined by the Engineer in the field.



Expires: November 30, 2022

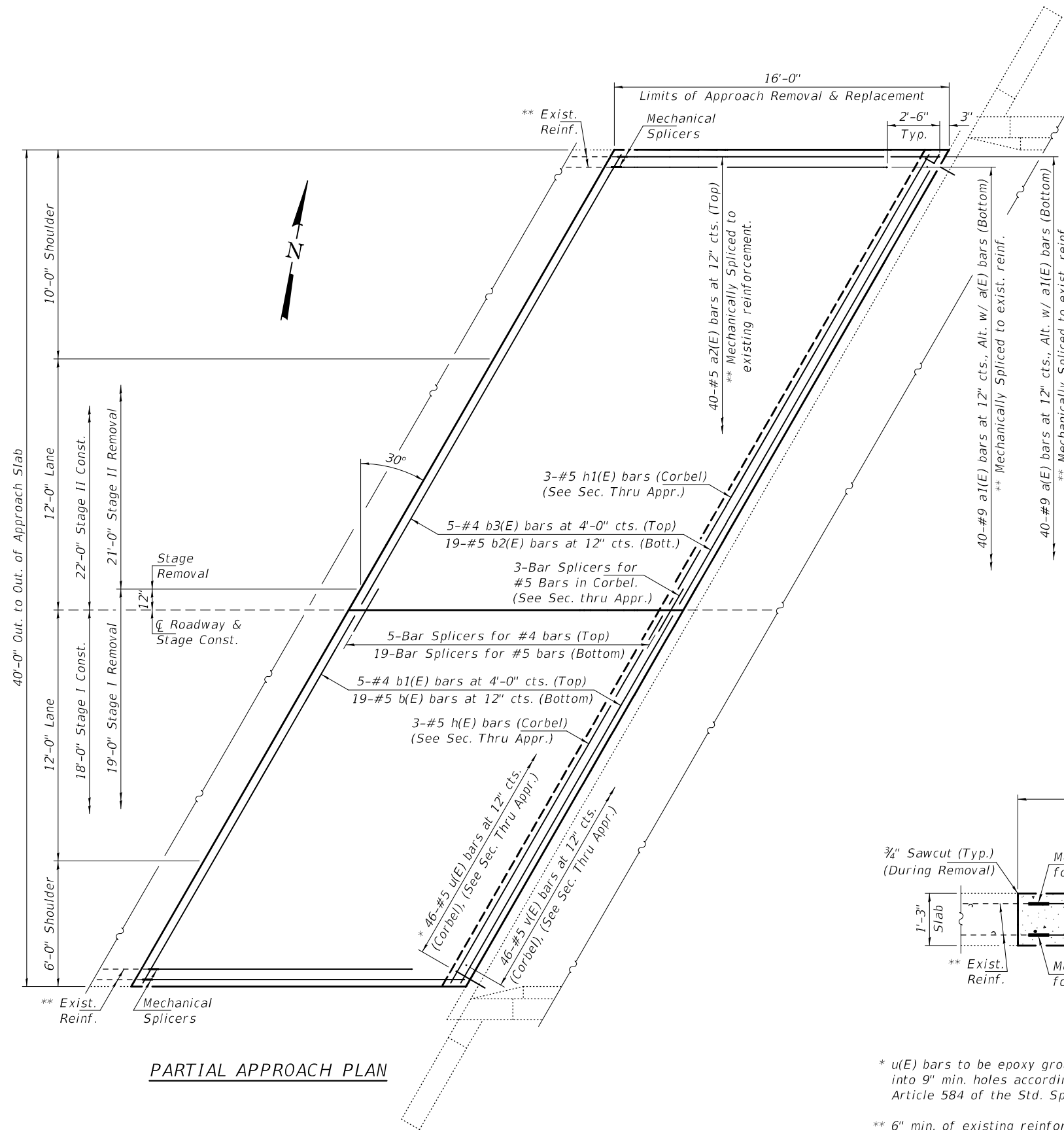
DESIGNED - Stephen M. Ryan	EXAMINED - <i>Tony A. Deak</i>	DATE - DECEMBER 6, 2021
CHECKED - Adrian T. Halloway	ENGINEER OF STRUCTURAL SERVICES	
DRAWN - STEFFEN	PASSED - <i>David Carl Puzey</i>	REVISED -
CHECKED - SMR ATH	ENGINEER OF BRIDGES AND STRUCTURES	REVISED -

**STATE OF ILLINOIS
DEPARTMENT OF TRANSPORTATION**

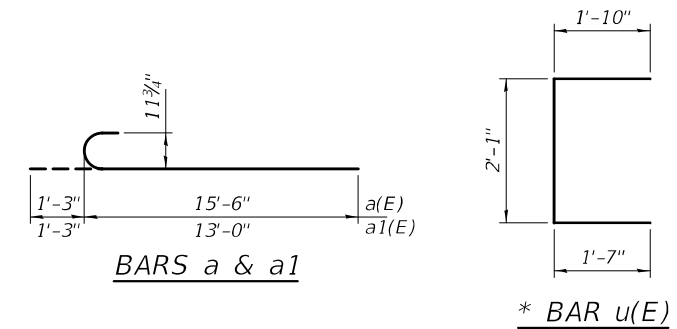
**GENERAL PLAN AND ELEVATION
U.S. ROUTE 20 (W.B.) OVER SUMNER CREEK
SN 089-0074**

SHEET NO. 1 OF 3 SHEETS

F.A. RTE.	SECTION	COUNTY	TOTAL SHEETS	SHEET NO.
301	(18BR)RS	STEPHENSON	11	9
CONTRACT NO. 64R32				
ILLINOIS FED. AID PROJECT				

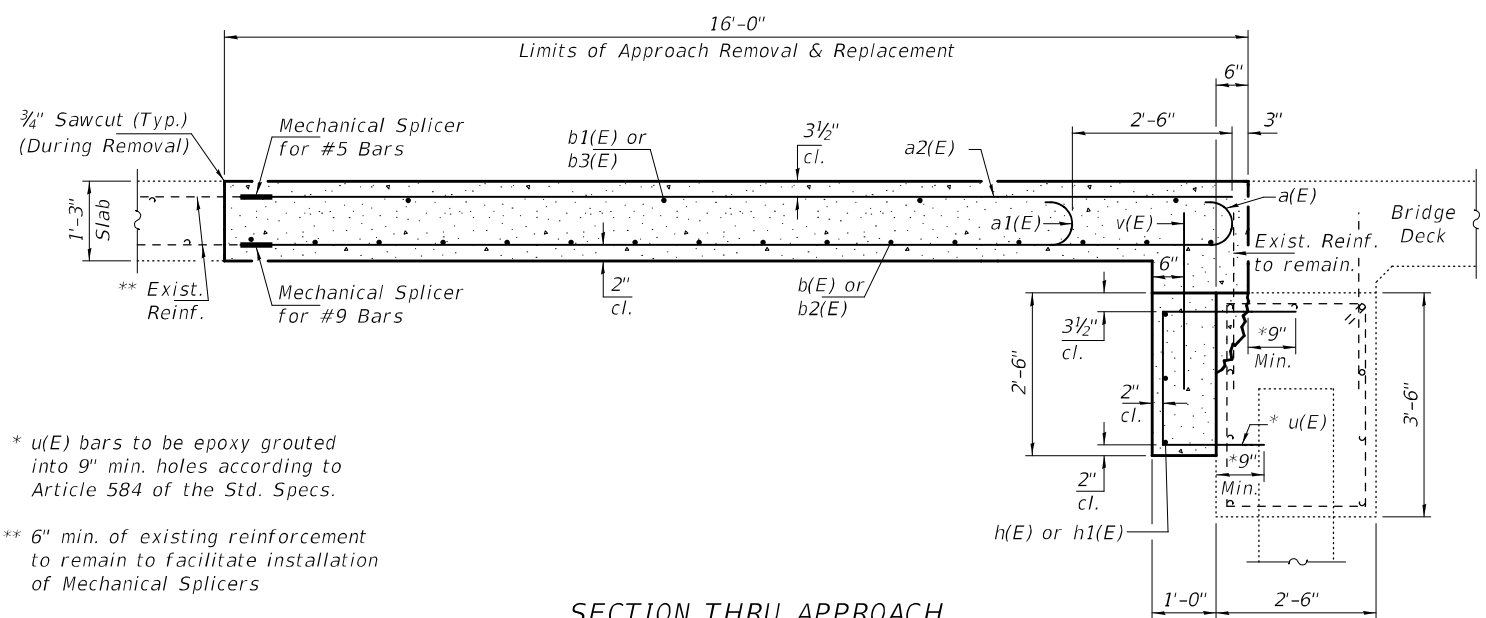


PARTIAL APPROACH PLAN



BILL OF MATERIAL

Bar	No.	Size	Length	Shape
a(E)	40	#9	16'-9"	U
a1(E)	40	#9	14'-3"	U
a2(E)	40	#5	15'-8"	—
b(E)	19	#5	20'-2"	—
b1(E)	5	#4	20'-2"	—
b2(E)	19	#5	25'-0"	—
b3(E)	5	#4	25'-0"	—
h(E)	3	#5	20'-2"	—
h1(E)	3	#5	25'-0"	—
u(E)	46	#5	5'-6"	C
v(E)	46	#5	2'-9"	—
Appr. Slab Removal		Sq. Yd.	71.1	
Concrete Superstructure		Cu. Yd.	35.6	
Concrete Structures		Cu. Yd.	4.9	
Reinforcement Bars, Epoxy Coated		Pound	5920	
Mechanical Splicers		Each	120	
Bar Splicers		Each	27	
Protective Coat		Sq. Yd.	71.1	



SECTION THRU APPROACH

* u(E) bars to be epoxy grouted into 9" min. holes according to Article 584 of the Std. Specs.
 ** 6" min. of existing reinforcement to remain to facilitate installation of Mechanical Splicers

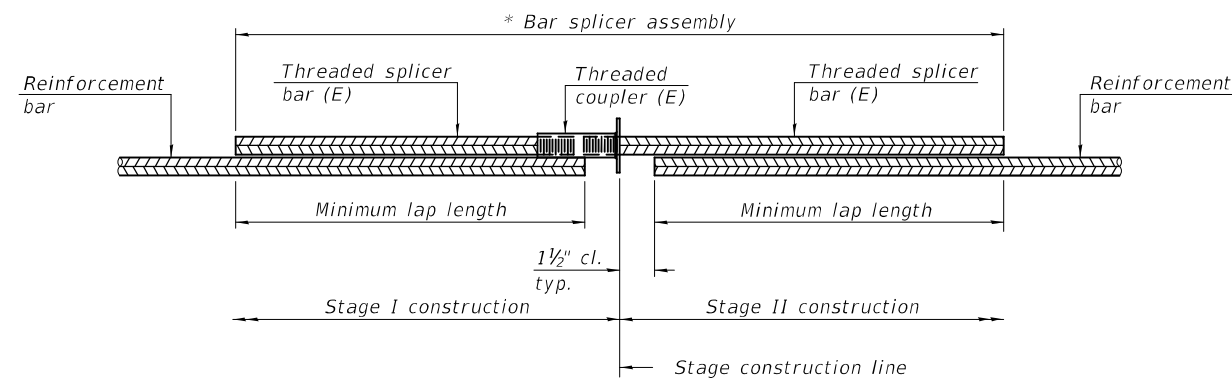
DESIGNED - SMR	EXAMINED - <i>Timothy A. Doolittle</i>	DATE - DECEMBER 6, 2021
CHECKED - ATH	ENGINEER OF STRUCTURAL SERVICES	
DRAWN - STEFFEN	PASSED - <i>Carl Ruyter</i>	REVISED -
CHECKED - SMR ATH	ENGINEER OF BRIDGES AND STRUCTURES	REVISED -

**STATE OF ILLINOIS
DEPARTMENT OF TRANSPORTATION**

**APPROACH & ABUTMENT REPAIR DETAILS
SN 089-0074**

SHEET NO. 2 OF 3 SHEETS

F.A. RTE.	SECTION	COUNTY	TOTAL SHEETS	SHEET NO.
301	(18BR)RS	STEPHENSON	11	10
CONTRACT NO. 64R32				
ILLINOIS FED. AID PROJECT				

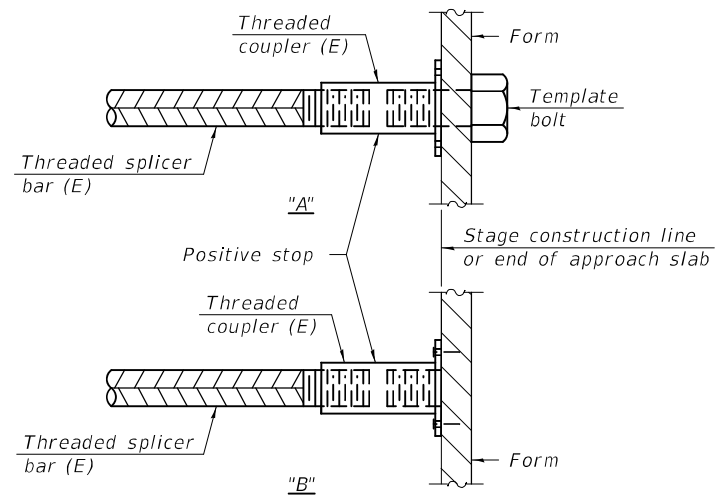


STANDARD BAR SPLICER ASSEMBLY PLAN
 (All components shall be provided from one supplier)

Threaded splicer bar length = min. lap length + 1 1/2" + thread length

* Epoxy not required on Bar Splicer Assembly components used in conjunction with black bars.

Location	Bar size	No. assemblies required	Minimum lap length
W. Appr. Slab	#4	5	2'-8"
W. Appr. Slab	#5	19	3'-0"
W. Appr. Corbel	#5	3	3'-6"

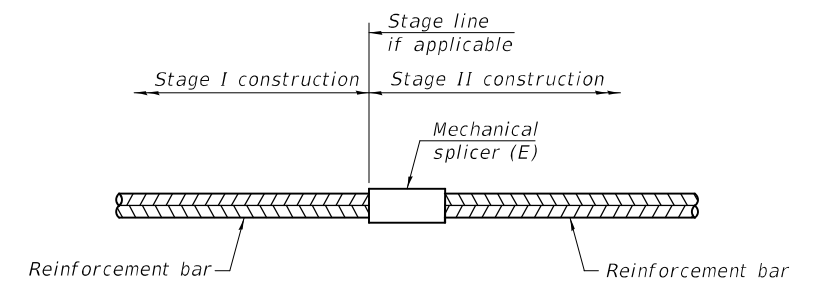


INSTALLATION AND SETTING METHODS

"A" : Set bar splicer assembly by means of a template bolt.

"B" : Set bar splicer assembly by nailing to wood forms or cementing to steel forms.

(E) : Indicates epoxy coating.



STANDARD MECHANICAL SPLICER

Location	Bar size	No. assemblies required
W. Appr. Slab	#5	40
W. Appr. Slab	#9	80

Notes:

Splicer bars shall be deformed with threaded ends and have a minimum 60 ksi yield strength.

All reinforcement shall be lapped and tied to the splicer bars.

Bar splicer assemblies shall be epoxy coated according to the requirements for reinforcement bars. See Section 508 of the Standard Specifications.

See approved list of bar splicer assemblies and mechanical splicers for alternatives.

BSD-1

1-1-2020

DESIGNED - SMR	EXAMINED	DATE - DECEMBER 6, 2021
CHECKED - ATH	<i>Timothy A. Anderson</i> ENGINEER OF STRUCTURAL SERVICES	
DRAWN - STEFFEN	PASSED	REVISED -
CHECKED - SMR ATH	<i>Carl Rieger</i> ENGINEER OF BRIDGES AND STRUCTURES	REVISED -

STATE OF ILLINOIS
 DEPARTMENT OF TRANSPORTATION

BAR SPLICER ASSEMBLY AND MECHANICAL SPLICER DETAILS
 SN 089-0074

SHEET NO. 3 OF 3 SHEETS

F.A. RTE.	SECTION	COUNTY	TOTAL SHEETS	SHEET NO.
301	(18BR)RS	STEPHENSON	11	11
CONTRACT NO. 64R32				
ILLINOIS		FED. AID PROJECT		