

INDEX OF SHEETS

01-21-2022 LETTING ITEM 139

STATE OF ILLINOIS

DEPARTMENT OF TRANSPORTATION

**PROPOSED
HIGHWAY PLANS**

**ROUTE VARIOUS
SECTION (38-3HB, 38-3HB-1, 122BR)BP
NHPP-STP- 45F4(167)
BRIDGE PAINTING
IROQUOIS COUNTY
C-93-035-22**

F.A. RTE.	SECTION	COUNTY	TOTAL SHEETS	SHEET NO.
VAR	(38-3HB, 38-3HB-1, 122BR)BP	IROQUOIS	26	1
		ILLINOIS	CONTRACT NO. 66M11	

- 1 . COVER SHEET
- 2 - 3 . GENERAL NOTES
- 4 - 5 . SUMMARY OF QUANTITIES
- 6 - 7 . TYPICAL SECTIONS
- 8 . SCHEDULES - LOCATION NO. 1 STRUCTURE NO. 038-0123
- 9 . SCHEDULES - LOCATION NO. 2 STRUCTURE NO. 038-0125
- 10 . SCHEDULES - LOCATION NO. 2 STRUCTURE NO. 038-0182
- 11 . TRAFFIC CONTROL AND PROTECTION, STANDARD 701400 FOR LOCATION NO. 1
- 12 . TRAFFIC CONTROL AND PROTECTION, STANDARD 701402 FOR LOCATION NO. 2
- 13 . TRAFFIC CONTROL AND PROTECTION, STANDARD 701321 FOR LOCATION NO. 2
- 14 . TYPICAL PAVEMENT MARKING
- 15 . TEMPORARY INFORMATION SIGNING
- 16 - 18 . EXISTING STRUCTURE DETAILS FOR LOCATION NO. 1 - STRUCTURE NO. 038-0123
- 19 - 21 . EXISTING STRUCTURE DETAILS FOR LOCATION NO. 2 - STRUCTURE NO. 038-0125
- 22 - 26 . EXISTING STRUCTURE DETAILS FOR LOCATION NO. 3 - STRUCTURE NO. 038-0182

STANDARDS

- 000001-08 STANDARD SYMBOLS, ABBREVIATIONS AND PATTERNS
- 001006 DECIMAL OF AN INCH AND OF A FOOT
- 701001-02 OFF-ROAD OPERATIONS 2L, 2W, MORE THAN 15' (4.5 m) AWAY
- 701006-05 OFF-ROAD OPERATIONS 2L, 2W, 15' (4.5 m) TO 24" (600 mm) FROM PAVEMENT EDGE
- 701101-05 OFF-ROAD OPERATIONS, MULTILANE, 15' (4.5 m) TO 24" (600 mm) FROM PAVEMENT EDGE
- 701106-02 OFF-ROAD OPERATIONS, MULTILANE, MORE THAN 15' (4.5 m) AWAY
- 701201-05 LANE CLOSURE, 2L, 2W, DAY ONLY, FOR SPEEDS ≥ 45 MPH
- 701206-05 LANE CLOSURE, 2L, 2W, NIGHT ONLY, FOR SPEEDS ≥ 45 MPH
- 701301-04 LANE CLOSURE, 2L, 2W, SHORT TIME OPERATIONS
- 701311-03 LANE CLOSURE, 2L, 2W, MOVING OPERATIONS - DAY ONLY
- 701321-18 LANE CLOSURE, 2L, 2W, BRIDGE REPAIR WITH BARRIER
- 701426-09 LANE CLOSURE, MULTILANE INTERMITTENT OR MOVING OPERATION, FOR SPEEDS ≥ 45 MPH
- 701428-01 TRAFFIC CONTROL, SETUP AND REMOVAL, FREEWAY/EXPRESSWAY
- 701901-08 TRAFFIC CONTROL DEVICES
- 704001-08 TEMPORARY CONCRETE BARRIER
- 701411-09 LANE CLOSURE, MULTILANE, AT ENTRANCE OR EXIT RAMP, FOR SPEEDS => 45 MPH



FUNCTIONAL CLASSIFICATION

RURAL INTERSTATE	RURAL MAJOR COLLECTOR
F.A.I. ROUTE 57 (I-57)	F.A.S. ROUTE 315 (US 52)
2019 ADT = 18000	2019 ADT = 1300
P.V. 59.1 % S.U. 6.2 % M.U. 34.7 %	P.V. 75.8 % S.U. 3.1 % M.U. 21.1 %

STATE OF ILLINOIS
DEPARTMENT OF TRANSPORTATION

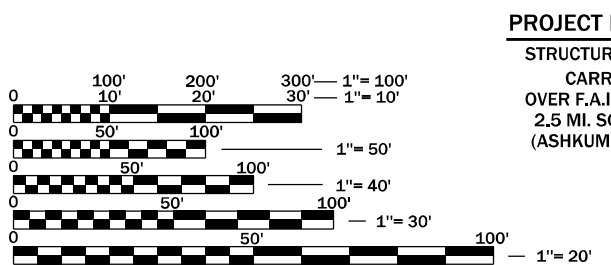
SUBMITTED October 19, 2021

David Alford
REGIONAL ENGINEER

December 10, 2021
[Signature]
ENGINEER OF DESIGN AND ENVIRONMENT

December 10, 2021
Stephen M. Smith
DIRECTOR OF HIGHWAYS PROJECT IMPLEMENTATION

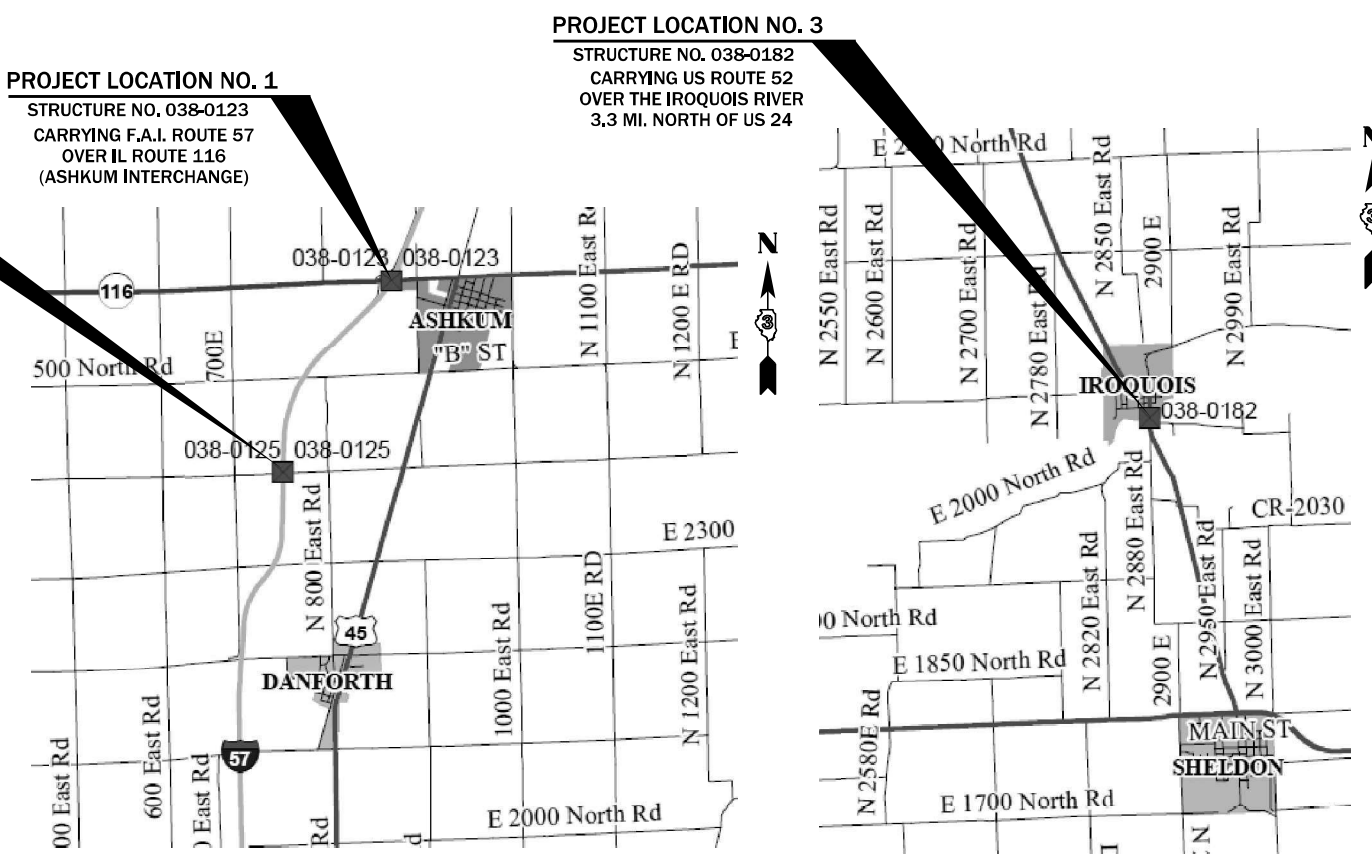
**PRINTED BY THE AUTHORITY
OF THE STATE OF ILLINOIS**



FULL SIZE PLANS HAVE BEEN PREPARED USING STANDARD ENGINEERING SCALES. REDUCED SIZED PLANS WILL NOT CONFORM TO STANDARD SCALES. IN MAKING MEASUREMENTS ON REDUCED PLANS, THE ABOVE SCALES MAY BE USED.

J.U.L.I.E.
JOINT UTILITY LOCATION INFORMATION FOR EXCAVATION
1-800-892-0123
OR 811

**PROJECT ENGINEER YOGESH PATEL P.E.
UNIT CHIEF RON WOODSHANK
DISTRICT 3 NO. (815) 434-6131
CONTRACT NO. 66M11**



GENERAL NOTES

PLAN DIMENSIONS AND DETAILS RELATIVE TO EXISTING PLANS ARE SUBJECT TO NOMINAL CONSTRUCTION VARIATIONS. THE CONTRACTOR SHALL FIELD VERIFY EXISTING DIMENSIONS AND DETAILS AFFECTING NEW CONSTRUCTION AND MAKE APPROVED ADJUSTMENTS PRIOR TO ORDERING OF MATERIALS. SUCH VARIATIONS SHALL NOT BE CAUSE FOR ADDITIONAL COMPENSATION IN SCOPE OF WORK; HOWEVER, THE CONTRACTOR WILL BE PAID FOR THE QUANTITY ACTUALLY FURNISHED AT THE UNIT PRICE BID FOR THE WORK.

CLEANING AND PAINTING OF EXISTING STRUCTURAL STEEL I-BEAMS AND STEEL COMPONENTS SHALL BE AS SPECIFIED IN THE FOLOWING SPECIAL PROVISIONS.

"CONTAINMENT AND DISPOSAL OF LEAD PAINT CLEANING RESIDUES".

"CONTAINMENT AND DISPOSAL OF NON-LEAD PAINT CLEANING RESIDUES".

"CLEANING AND PAINTING EXISTING STEEL STRUCTURES",

THE CONRACTOR IS BE REQUIRED TO SECURE WASTE CONTAINERS THAT REMAIN ON THE JOB SITE. THIS WILL ENTAIL THAT ALL WASTE CONTAINERS CANNOT BE MOVED OR OPENED DURING NON-WORKING HOURS.

WORKING DAYS SHALL BE CHARGED UNTIL THE CONTRACTOR OR SUBCONTRACTOR LISCENSED TO DISPOSED OF LEAD/NON-LEAD PAINT RESIDUES HAS REMOVED THE WASTE MATERIAL FROM THE JOB SITE ACCORDING TO ALL FEDERAL, STATE AND LOCAL LAWS AND ORDINANCES. IF THE LISCENSED CONTRACTOR OR SUBCONTRACTOR FAILS TO DISPOSE OF THE LEAD/NON-LEAD PAINT RESIDUES ON OR BEFORE THE SPECIFIED DATE, LIQUIDATED DAMAGES SHALL BE CHARGED PER CALENDAR DAY ACCORDING TO ARTICLE 108.09 OF THE STANDARD SPECIFICATIONS UNTIL SUCH TIME THAT ALL PAINT RESIDUE MATERIALS HAVE BEEN REMOVED FROM THE JOB SITE AND DISPOSED OF.

COMMITMENTS

STATE OF ILLINOIS
DEPARTMENT OF TRANSPORTATION
DISTRICT THREE
AS BUILT INFORMATION

SUPERVISING CONSTRUCTION FIELD ENGINEER

RESIDENT ENGINEER / TECHNICIAN

START & END DATES
OF CONSTRUCTION:

INSPECTORS:

STATE OF ILLINOIS
DEPARTMENT OF TRANSPORTATION
DISTRICT THREE

PREPARED BY: _____
DISTRICT STUDIES & PLANS ENGINEER

DATE: _____

EXAMINED BY: _____
DISTRICT CONSTRUCTION ENGINEER

DISTRICT MATERIALS ENGINEER

DISTRICT OPERATIONS ENGINEER

STATE OF ILLINOIS
DEPARTMENT OF TRANSPORTATION

GENERAL NOTES

SCALE: SHEET 1 OF 2 SHEETS STA. TO STA.

F.A. RTE.	SECTION	COUNTY	TOTAL SHEETS	SHEET NO.
VAR	(38-3HB, 38-3HB-1, 122BR)BP	IROQUOIS	26	2
CONTRACT NO. 66M11			ILLINOIS FED. AID PROJECT	

STRUCTURE NOTES

STRUCTURE NO. 038-0123 IS DESIGNATED AS "LOCATION 1".

EXISTING STRUCTURAL STEEL COATING ON STRUCTURE NO. 038-0123 CONTAINS "LEAD". THE CONTRACTOR SHALL TAKE APPROPRIATE PRECAUTIONS DEALING WITH LEAD PAINT ON THIS STRUCTURE.

SSPC-QP1 AND SSPC-QP2, "PAINTING CONTRACTOR CERTIFICATIONS" SHALL BE REQUIRED FOR THIS STRUCTURE.

A MINIMUM OF TWO AIR MONITORS SHALL BE REQUIRED FOR THIS STRUCTURE. THE CONTRACTOR SHALL FURNISH AND INSTALL THE MONITORS ACCORDING TO THE MANUFACTURER'S RECOMMENDATIONS. LOCATION OF MONITORS SHALL BE AS DIRECTED BY THE ENGINEER. (SEE THE SPECIAL PROVISION FOR "CONTAINMENT AND DISPOSAL OF LEAD PAINT CLEANING RESIDUES").

CLEANING AND PAINTING STRUCTURAL STEEL I-BEAMS AND STEEL COMPONENTS.

CLEANING AND PAINTING OF EXISTING STRUCTURAL STEEL I-BEAMS AND STEEL COMPONENTS SHALL BE AS SPECIFIED IN THE APPLICABLE SPECIAL PROVISIONS AND AS SPECIFIED BELOW.

CLEANING.

ALL EXISTING STRUCTURAL STEEL INCLUDING THE ENTIRE SURFACE AREA OF THE STEEL I-BEAMS, STEEL BEARING ASSEMBLIES, STEEL WEB STIFFENERS, DRAINS. STEEL HAND RAILS (WHEN PRESENT) AND STEEL ANGLE BRACKETS.

ALL EXISTING STRUCTURAL STEEL COMPONENTS AS DESCRIBED ABOVE SHALL BE CLEANED PER THE REQUIREMENTS OF "NEAR WHITE BLAST CLEANING - SSPC-SP-10".

PAINTING.

THE FINAL FINISH COAT FOR THE "EXTERIOR" FACE OF THE FASCIA BEAMS, THE BOTTOM FLANGE OF THE FASCIA BEAMS AND THE EXTERIOR BEARINGS SHALL BE "GREEN, MUNSELL NO. 7.5G 4/8.

THE FINAL FINISH COAT FOR THE INTERIOR SURFACE OF THE FASCIA BEAMS, ALL EXPOSED SURFACES OF THE INTERIOR I-BEAMS, STEEL COMPONENTS OF ALL INTERIOR BEARING ASSEMBLIES, CROSS AND LATERAL BRACING, STEEL WEB STIFFENERS, DRAINS AND STEEL ANGLE BRACKETS SHALL BE "GRAY MUNSELL NO. 5B 7/1".

STEEL HAND RAILS (WHEN PRESENT): THE FINAL FINSH COAT FOR ALL STEEL COMPONENTS OF THE HANDRAIL SHALL BE "GREEN, MUNSELL NO. 7.5G 4/8.

STRUCTURE NOTES CONT'D

STRUCTURE NO. 038-0125 IS DESIGNATED AS "LOCATION 2".

EXISTING STRUCTURAL STEEL COATING ON STRUCTURE NO. 038-0125 CONTAINS "LEAD". THE CONTRACTOR SHALL TAKE APPROPRIATE PRECAUTIONS DEALING WITH LEAD PAINT ON THIS STRUCTURE.

SSPC-QP1 AND SSPC-QP2, "PAINTING CONTRACTOR CERTIFICATIONS" SHALL BE REQUIRED FOR THIS STRUCTURE.

A MINIMUM OF TWO AIR MONITORS SHALL BE REQUIRED FOR THIS STRUCTURE. THE CONTRACTOR SHALL FURNISH AND INSTALL THE MONITORS ACCORDING TO THE MANUFACTURER'S RECOMMENDATIONS. LOCATION OF MONITORS SHALL BE AS DIRECTED BY THE ENGINEER. (SEE THE SPECIAL PROVISION FOR "CONTAINMENT AND DISPOSAL OF LEAD PAINT CLEANING RESIDUES").

CLEANING AND PAINTING STRUCTURAL STEEL I BEAMS/GIRDERS AND STEEL COMPONENTS.

CLEANING AND PAINTING OF EXISTING STRUCTURAL STEEL I-BEAMS AND STEEL COMPONENTS SHALL BE AS SPECIFIED IN THE APPLICABLE SPECIAL PROVISIONS AND AS SPECIFIED BELOW.

CLEANING.

ALL EXISTING STRUCTURAL STEEL INCLUDING THE ENTIRE SURFACE AREA OF THE STEEL I-BEAMS, STEEL BEARING ASSEMBLIES, STEEL WEB STIFFENERS, DRAINS. STEEL HAND RAILS (WHEN PRESENT) AND STEEL ANGLE BRACKETS.

ALL EXISTING STRUCTURAL STEEL COMPONENTS AS DESCRIBED ABOVE SHALL BE CLEANED PER THE REQUIREMENTS OF "NEAR WHITE BLAST CLEANING - SSPC-SP-10".

PAINTING.

THE FINAL FINISH COAT FOR THE "EXTERIOR" FACE OF THE FASCIA BEAMS, THE BOTTOM FLANGE OF THE FASCIA BEAMS AND THE EXTERIOR BEARINGS SHALL BE "GREEN, MUNSELL NO. 7.5G 4/8.

THE FINAL FINISH COAT FOR THE INTERIOR SURFACE OF THE FASCIA BEAMS, ALL EXPOSED SURFACES OF THE INTERIOR I-BEAMS, STEEL COMPONENTS OF ALL INTERIOR BEARING ASSEMBLIES, CROSS AND LATERAL BRACING, STEEL WEB STIFFENERS, DRAINS AND STEEL ANGLE BRACKETS SHALL BE "GRAY MUNSELL NO. 5B 7/1".

STEEL HAND RAILS (WHEN PRESENT): THE FINAL FINSH COAT FOR ALL STEEL COMPONENTS OF THE HANDRAIL SHALL BE "GREEN, MUNSELL NO. 7.5G 4/8.

STRUCTURE NOTES CONT'D

STRUCTURE NO. 038-0182 IS DESIGNATED AS "LOC

EXISTING STRUCTURAL STEEL COATING ON STRUCTURE NO IS "WEATHERING STEEL" COATINGS.

SSPC-QP1, "PAINTING CONTRACTOR CERTIFICATIONS" SHAI REQUIRED FOR THIS STRUCTURE.

CLEANING AND PAINTING STRUCTURAL STEEL I BEAMS/GIR STEEL COMPONENTS.

CLEANING AND PAINTING OF EXISTING STRUCTURAL STEEL AND STEEL COMPONENTS SHALL BE AS SPECIFIED IN THE SPECIAL PROVISIONS AND AS SPECIFIED BELOW.

CLEANING.

ALL EXISTING STRUCTURAL STEEL INCLUDING THE EN AREA OF THE STEEL I-BEAMS, STEEL BEARING ASSEMI WEB STIFFENERS, DRAINS. STEEL HAND RAILS (WHEN AND STEEL ANGLE BRACKETS.

ALL EXISTING STRUCTURAL STEEL COMPONENTS AS DESCII SHALL BE CLEANED PER THE REQUIREMENTS OF "NEAR WI CLEANING - SSPC-SP-10".

PAINTING.

THE FINAL FINISH COAT FOR THE "EXTERIOR" FACE O BEAMS, THE BOTTOM FLANGE OF THE FASCIA BEAMS EXTERIOR BEARINGS SHALL BE "GREEN, MUNSELL NO

THE FINAL FINISH COAT FOR THE INTERIOR SURFACE BEAMS, ALL EXPOSED SURFACES OF THE INTERIOR I-I COMPONENTS OF ALL INTERIOR BEARING ASSEMBLIES LATERAL BRACING, STEEL WEB STIFFENERS, DRAINS / BRACKETS SHALL BE "GRAY MUNSELL NO. 5B 7/1".

STEEL HAND RAILS (WHEN PRESENT): THE FINAL FINI ALL STEEL COMPONENTS OF THE HANDRAIL SHALL BE MUNSELL NO. 7.5G 4/8.

MODEL Path: \\p:\pub\paw\beaufay.com\FW\DOT\Documents\DOT Office\District 3\Project\03866M11\03866M11-PLAN.dgn
 FILE NAME: p:\pub\paw\beaufay.com\FW\DOT\Documents\DOT Office\District 3\Project\03866M11\03866M11-PLAN.dgn

USER NAME = woodshank1	DESIGNED - RW	REVISED -
	DRAWN - RW	REVISED -
PLOT SCALE = 100,0000' / in.	CHECKED - YP	REVISED -
PLOT DATE = 11/20/2021	DATE - 8/27/2021	REVISED -

**STATE OF ILLINOIS
DEPARTMENT OF TRANSPORTATION**

GENERAL NOTES

SCALE: SHEET 2 OF 2 SHEETS STA. TO STA.

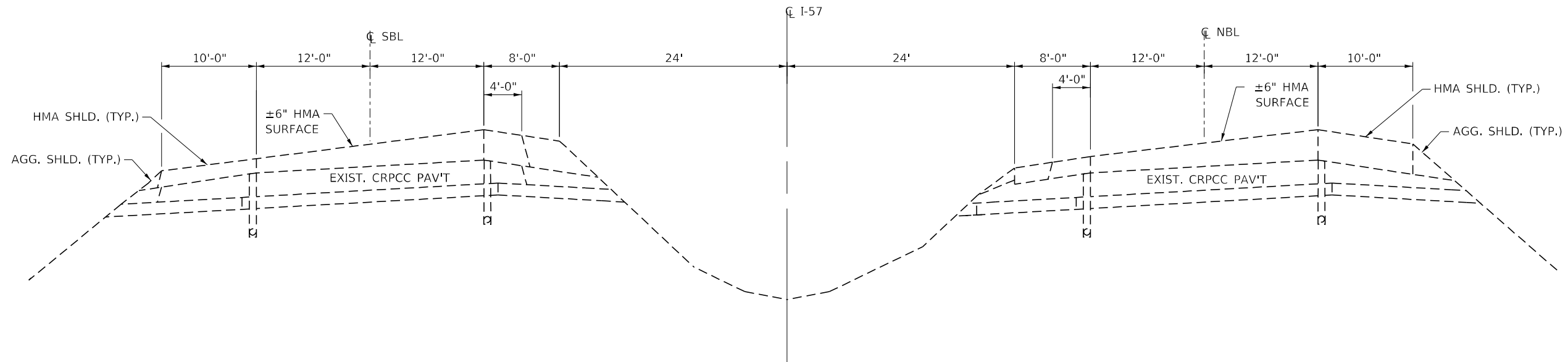
F.A. RTE.	SECTION	COUNTY	TOTAL SHEETS	SHEET NO.
VAR	(38-3HB, 38-3HB-1, 122BR)BP	IROQUOIS	26	3
CONTRACT NO. 66M11				
ILLINOIS FED. AID PROJECT				

CODE NO.	ITEM	UNIT	TOTAL QUANTITY	CONSTRUCTION CODE	
				90% FED/10% STATE NHPP BRIDGE	80% FED/20% STATE STP-RUR BRIDGE
				0047	0047
				SN 038-0123/038-0125	SN 038-0182
Z0010501	CLEANING AND PAINTING STEEL BRIDGE NO. 1	L SUM	1	1	
Z0010502	CLEANING AND PAINTING STEEL BRIDGE NO. 2	L SUM	1	1	
Z0010503	CLEANING AND PAINTING STEEL BRIDGE NO. 3	L SUM	1		1
67100100	MOBILIZATION	L SUM	1	0.5	0.5
70100207	TRAFFIC CONTROL AND PROTECTION, STANDARD 701402	EACH	2	2	
70100405	TRAFFIC CONTROL AND PROTECTION, STANDARD 701321	EACH	1		1
70100420	TRAFFIC CONTROL AND PROTECTION, STANDARD 701411	EACH	4	4	
70106500	TEMPORARY BRIDGE TRAFFIC SIGNALS	EACH	1		1
70107025	CHANGEABLE MESSAGE SIGN	CAL DA	56	56	
70400100	TEMPORARY CONCRETE BARRIER	FOOT	1050	700	350
70400200	RELOCATE TEMPORARY CONCRETE BARRIER	FOOT	2100	2100	
70600251	IMPACT ATTENUATORS, TEMPORARY (NON- REDIRECTIVE, NARROW), TEST LEVEL 3	EACH	4	2	2
70600352	IMPACT ATTENUATORS, RELOCATE (NON- REDIRECTIVE, NARROW), TEST LEVEL 3	EACH	6	6	
* 78008210	POLYUREA PAVEMENT MARKING TYPE I - LINE 4"	FOOT	4280	4280	

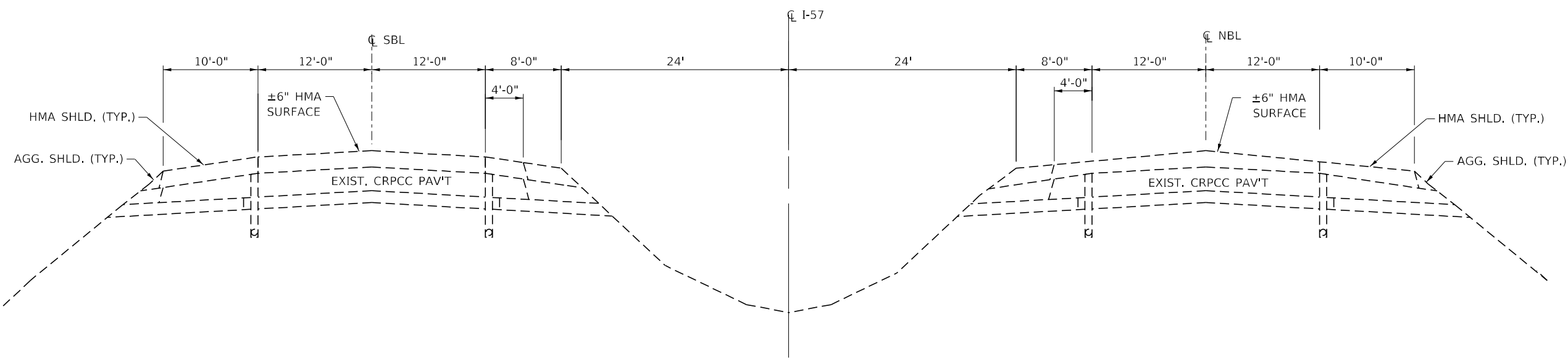
*= SPECIALTY ITEM

MODEL: Default
 FILE: M:\asrc\dw\benley.com\PROJECTS\DOT\Office\Dir\c2\PROJECTS\66M11\CONTRACT\66M11\PLANS.dgn

USER NAME = woodshankr	DESIGNED - RW	REVISED -	STATE OF ILLINOIS DEPARTMENT OF TRANSPORTATION	SUMMARY OF QUANTITIES			FA RTE	SECTION	COUNTY	TOTAL SHEETS	SHEET NO.
DRAWN - RW	REVISED -	VAR					(38-3HB, 38-3HB-1, 122BR)BP	IROQUOIS	26	4	
PLOT SCALE = 100.0000' / in.	CHECKED - YP	REVISED -		SCALE: SHEET 1 OF 2 SHEETS STA. TO STA.			CONTRACT NO. 66M11				
PLOT DATE = 11/20/2021	DATE - 8/27/2021	REVISED -					ILLINOIS FED. AID PROJECT				



**TYPICAL SECTION
LOCATION NO. 1
LOOKING NORTH**



**TYPICAL SECTION
LOCATION NO. 2
LOOKING NORTH**

MODEL: Default
 FILE NAME: p:\project\aw_bentley.com\FW\DOT\Documents\DOT Office\District 3\Project\366M11\CADD\366M11-PLAN.dgn

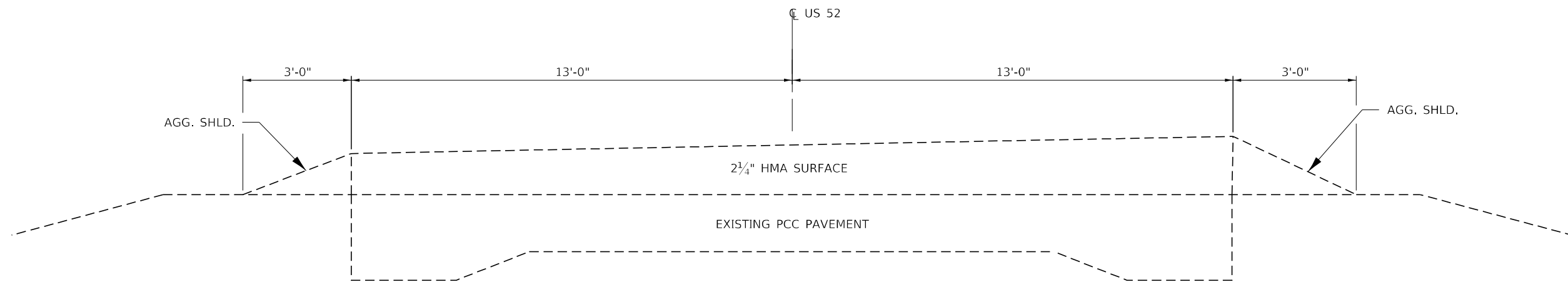
USER NAME = woodshank1	DESIGNED - RW	REVISED -
	DRAWN - RW	REVISED -
PLOT SCALE = 100,0000' / in.	CHECKED - YP	REVISED -
PLOT DATE = 11/20/2021	DATE - 8/27/2021	REVISED -

**STATE OF ILLINOIS
DEPARTMENT OF TRANSPORTATION**

**TYPICAL SECTIONS - F.A.I. 57 (I-57)
FOR LOCATION NO. 1 AND LOCATION NO. 2**

SCALE: SHEET 1 OF 1 SHEETS STA. TO STA.

F.A. RTE.	SECTION	COUNTY	TOTAL SHEETS	SHEET NO.
VAR	(38-3HB, 38-3HB-1, 122BR)BP	IROQUOIS	26	6
CONTRACT NO. 66M11				
ILLINOIS FED. AID PROJECT				



**TYPICAL SECTION
LOCATION NO. 3
LOOKING SOUTH**

MODEL: Default
 FILE NAME: p:\u0002\paw.bentley.com\FW\DOT\Documents\DOT Office\District 3\Project\0366M11\CAD\DATA\0366M11-PLAN.dgn

USER NAME = woodshank1	DESIGNED - RW	REVISED -
	DRAWN - RW	REVISED -
PLOT SCALE = 100,0000 ' / in.	CHECKED - YP	REVISED -
PLOT DATE = 11/20/2021	DATE - 8/27/2021	REVISED -

**STATE OF ILLINOIS
DEPARTMENT OF TRANSPORTATION**

**TYPICAL SECTIONS - US ROUTE 52
FOR LOCATION NO. 3**

SCALE: SHEET 1 OF 1 SHEETS STA. TO STA.

F.A. RTE.	SECTION	COUNTY	TOTAL SHEETS	SHEET NO.
VAR	(38-3HB, 38-3HB-1, 122BR)BP	IROQUOIS	26	7
			CONTRACT NO. 66M11	
		ILLINOIS	FED. AID PROJECT	

SCHEDULE - TRAFFIC CONTROL AND PROTECTION

LOCATION NO. 1 - STRUCTURE NO. 038-0123

TRAFFIC CONTROL AND PROTECTION STANDARD 701402	TRAFFIC CONTROL AND PROTECTION STANDARD 701411	TRAFFIC CONTROL AND PROTECTION STANDARD 701201	CHANGEABLE MESSAGE SIGN	TEMPORARY RUMBLE STRIPS (SPECIAL)	TEMPORARY CONCRETE BARRIER	RELOCATE TEMPORARY CONCRETE BARRIER	IMPACT ATTENUATORS, TEMPORARY NON-REDIRECTIVE, NARROW TEST LEVEL 3	IMPACT ATTENUATORS, RELOCATE NON-REDIRECTIVE, NARROW TEST LEVEL 3
EACH	EACH	EACH	CAL DA	EACH	FOOT	FOOT	EACH	EACH
1	4	1	28	8	350	1050	1	3

SCHEDULE - PAVEMENT MARKING

LOCATION NO. 1 - STRUCTURE NO. 038-0123

LOCATION	PAVEMENT MARKING REMOVAL WATERBLASTING		POLYUREA PAVEMENT MARKING TYPE I	POLYUREA PAVEMENT MARKING TYPE I
	LINE 4"	LINE 6"	LINE 4"	LINE 6"
	SQ FT		FOOT	FOOT
NORTHBOUND LANES				
STAGE I	177	255	535	
STAGE II	177		535	510
SUBTOTAL	354	255	1070	510
SOUTHBOUND LANES				
STAGE I	177	255	535	
STAGE II	177		535	510
SUBTOTAL	354	255	1070	510
TOTAL	1218		2140	1020

SCHEDULE - CLEANING AND PAINTING

LOCATION NO. 1 - STRUCTURE NO. 038-0123

LOCATION	CONTAINMENT AND DISPOSAL LEAD PAINT CLEANING RESIDUES NO. 1	CLEANING AND PAINTING STEEL BRIDGE NO. 1	BRIDGE CLEANING AND PAINTING WARRANTY NUMBER 1
	L SUM	L SUM	L SUM
TOTAL	1	1	1

MODEL: Default
FILE NAME: p:\u0026amp;w\beaufy.com\FW\DOT\Documents\DOT Office\Dir\dir_3\Project\03866M1\03866M1-PLAN.dgn

USER NAME = woodshank1	DESIGNED - RW	REVISED -
	DRAWN - RW	REVISED -
PLOT SCALE = 100,0000' / in.	CHECKED - YP	REVISED -
PLOT DATE = 11/20/2021	DATE - 8/27/2021	REVISED -

**STATE OF ILLINOIS
DEPARTMENT OF TRANSPORTATION**

**SCHEDULES - LOCATION NO. 1
STRUCTURE NO. 038-0123**

SCALE: SHEET 1 OF 1 SHEETS STA. TO STA.

F.A. RTE.	SECTION	COUNTY	TOTAL SHEETS	SHEET NO.
VAR	(38-3HB, 38-3HB-1, 122BR)BP	IROQUOIS	26	8
			CONTRACT NO. 66M11	
		ILLINOIS FED. AID PROJECT		

SCHEDULE - TRAFFIC CONTROL AND PROTECTION

LOCATION NO. 2 - STRUCTURE NO. 038-0125

TRAFFIC CONTROL AND PROTECTION STANDARD 701402	TRAFFIC CONTROL AND PROTECTION STANDARD 701201	CHANGEABLE MESSAGE SIGN	TEMPORARY RUMBLE STRIPS (SPECIAL)	TEMPORARY CONCRETE BARRIER	RELOCATE TEMPORARY CONCRETE BARRIER	IMPACT ATTENUATORS, TEMPORARY NON-REDIRECTIVE, NARROW TEST LEVEL 3	IMPACT ATTENUATORS, RELOCATE NON-REDIRECTIVE, NARROW TEST LEVEL 3
EACH	EACH	CAL DA	EACH	FOOT	FOOT	EACH	EACH
1	1	28	8	350	1050	1	3

SCHEDULE - PAVEMENT MARKING

LOCATION NO. 2 - STRUCTURE NO. 038-0125

LOCATION	PAVEMENT MARKING REMOVAL WATERBLASTING		POLYUREA PAVEMENT MARKING TYPE I	POLYUREA PAVEMENT MARKING TYPE I
	LINE 4"	LINE 6"	LINE 4"	LINE 6"
	SQ FT		FOOT	FOOT
NORTHBOUND LANES				
STAGE I	177	255	535	
STAGE II	177		535	510
SUBTOTAL	354	255	1070	510
SOUTHBOUND LANES				
STAGE I	177	255	535	
STAGE II	177		535	510
SUBTOTAL	354	255	1070	510
TOTAL	1218		2140	1020

SCHEDULE - CLEANING AND PAINTING

LOCATION NO. 2 - STRUCTURE NO. 038-0125

LOCATION	CONTAINMENT AND DISPOSAL LEAD PAINT CLEANING RESIDUES NO. 2	CLEANING AND PAINTING STEEL BRIDGE NO. 2	BRIDGE CLEANING AND PAINTING WARRANTY NUMBER 2
	L SUM	L SUM	L SUM
TOTAL	1	1	1

MODEL: Default
 FILE NAME: p:\u0002-pw-bentley.com\FWIDOT\Documents\DOT Office\District 3\Project\03866M1\03866M1-PLAN.dgn

USER NAME = woodshank1	DESIGNED - RW	REVISED -
	DRAWN - RW	REVISED -
PLOT SCALE = 100,0000' / in.	CHECKED - YP	REVISED -
PLOT DATE = 11/20/2021	DATE - 8/27/2021	REVISED -

**STATE OF ILLINOIS
DEPARTMENT OF TRANSPORTATION**

**SCHEDULES - LOCATION NO. 2
STRUCTURE NO. 038-0125**

SCALE: SHEET 1 OF 1 SHEETS STA. TO STA.

F.A. RTE.	SECTION	COUNTY	TOTAL SHEETS	SHEET NO.
VAR	(38-3HB, 38-3HB-1, 122BR)BP	IROQUOIS	26	9
			CONTRACT NO. 66M11	
		ILLINOIS FED. AID PROJECT		

SCHEDULE - TRAFFIC CONTROL AND PROTECTION
LOCATION NO. 3 - STRUCTURE NO. 038-0182

TRAFFIC CONTROL AND PROTECTION STANDARD 701321	TRAFFIC CONTROL AND PROTECTION STANDARD 701201	TEMPORARY RUMBLE STRIPS (SPECIAL)	TEMPORARY BRIDGE TRAFFIC SIGNALS	TEMPORARY INFORMATION SIGNING	TEMPORARY CONCRETE BARRIER	IMPACT ATTENUATORS, TEMPORARY NON-REDIRECTIVE, NARROW TEST LEVEL 3
EACH	EACH	EACH	EACH	SQ FT	FOOT	EACH
1	1	6	1	42	350	2

SCHEDULE - PAVEMENT MARKING
LOCATION NO. 3 - STRUCTURE NO. 038-0182

LOCATION	PAVEMENT MARKING REMOVAL WATERBLASTING	POLYUREA PAVEMENT MARKING TYPE I
	LINE 6"	LINE 6"
	SQ FT	FOOT
SOUTHBOUND LANES		
STAGE I	90	180
TOTAL	90	180

SCHEDULE - CLEANING AND PAINTING
LOCATION NO. 3 - STRUCTURE NO. 038-0182

LOCATION	CONTAINMENT AND DISPOSAL NON-LEAD PAINT CLEANING RESIDUES NO. 1	CLEANING AND PAINTING STEEL BRIDGE NO. 3	BRIDGE CLEANING AND PAINTING WARRANTY NUMBER 3
	L SUM	L SUM	L SUM
TOTAL	1	1	1

MODEL: Default
FILE NAME: p:\u0026amp;w\bea\paw.com\FW\DOT\Documents\DOT\Office\Dir\drct_3\Project\03866M1\03866M1-PLAN.dgn

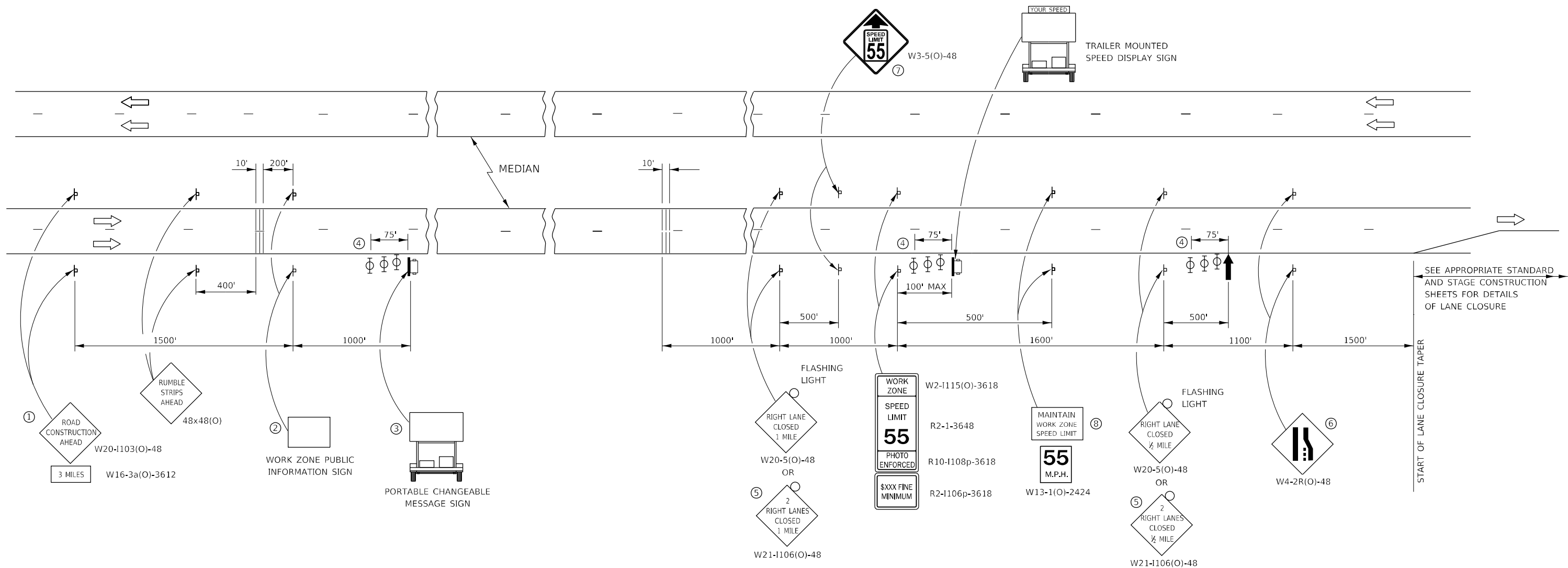
USER NAME = woodshank1	DESIGNED - RW	REVISED -
	DRAWN - RW	REVISED -
PLOT SCALE = 100,0000 ' / in.	CHECKED - YP	REVISED -
PLOT DATE = 11/20/2021	DATE - 8/27/2021	REVISED -

**STATE OF ILLINOIS
DEPARTMENT OF TRANSPORTATION**

**SCHEDULES - LOCATION NO. 3
STRUCTURE NO. 038-0182**

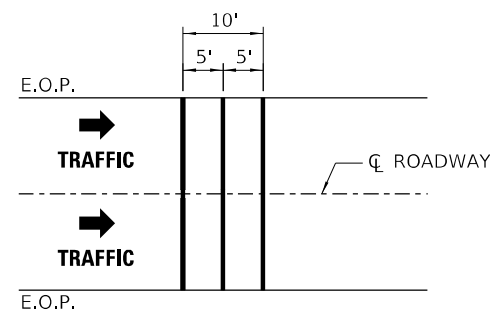
SCALE: SHEET 1 OF 1 SHEETS STA. TO STA.

F.A. RTE.	SECTION	COUNTY	TOTAL SHEETS	SHEET NO.
	(38-3HB, 38-3HB-1, 122BR)BP	IROQUOIS	26	10
CONTRACT NO. 66M11				
ILLINOIS FED. AID PROJECT				



SEE APPROPRIATE STANDARD AND STAGE CONSTRUCTION SHEETS FOR DETAILS OF LANE CLOSURE

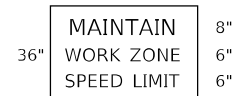
START OF LANE CLOSURE TAPER



TEMPORARY RUMBLE STRIP (SPECIAL)
FOR PAYMENT PURPOSES, EACH LANE OF TRAFFIC SHALL BE CONSIDERED "ONE EACH".

- ① THE ROAD CONSTRUCTION AHEAD SIGN SHALL BE LOCATED 3 MILES IN ADVANCE OF THE PROJECT LIMITS.
- ② THE MESSAGE AND SIZE OF THE WORK ZONE PUBLIC INFORMATION SIGN SHALL BE AS SPECIFIED BY THE DEPARTMENT.
- ③ TO BE PLACED IN THE MEDIAN WHEN FEASIBLE. THE MESSAGE BOARD SHALL BE USED TO DISPLAY STATUS OF LANES WITHIN THE PROJECT. THE PRIMARY MESSAGES SHALL BE:
"RIGHT LANE CLOSED" / " x MILES AHEAD"
"LEFT LANE CLOSED" / " x MILES AHEAD"
"ALL LANES OPEN"
- ④ THREE, TYPE II BARRICADES, DRUMS, OR VERTICAL BARRICADES AT 25' CENTERS.
- ⑤ THIS SIGN SHALL BE USED WHEN 2 LANES ARE CLOSED.
- ⑥ WHEN THE LEFT LANE IS CLOSED, SWITCH THESE TWO SIGNS AND THE DIRECTION OF THE MERGE ARROW.
- ⑦ THIS SIGN SHALL ONLY BE USED IF THE EXISTING SPEED LIMIT IS GREATER THAN 65 MPH.

- ⑧ 48"x36" FLUORESCENT ORANGE SIGN WITH BLACK LETTERS.
48"



"MAINTAIN WORK ZONE SPEED LIMIT" SIGN SHALL NOT BE PAID FOR SEPARATELY BUT SHALL BE INCLUDED IN THIS TRAFFIC CONTROL STANDARD.

- ↑ ARROW BOARD
- ☐ PORTABLE CHANGEABLE MESSAGE SIGN
- ⊥ SIGN
- ⊕ TYPE II BARRICADE, DRUM, OR VERTICAL BARRICADE WITH MONODIRECTIONAL FLASHING LIGHT
- ≡ TEMPORARY RUMBLE STRIPS (SEE SPECIAL PROVISION)

GENERAL NOTE:

THIS STANDARD IS USED WHERE AT ANY TIME A LANE IS CLOSED ON A FREEWAY/EXPRESSWAY.

WHEN THE LEFT LANE IS CLOSED, LEFT LANE CLOSED SIGNS SHALL BE SUBSTITUTED FOR THE RIGHT LANE CLOSED SIGNS.

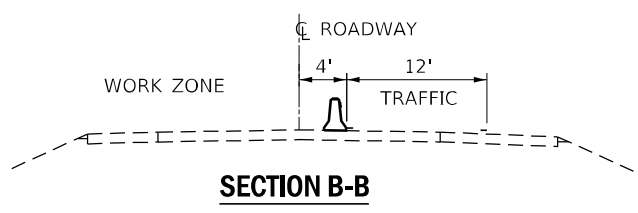
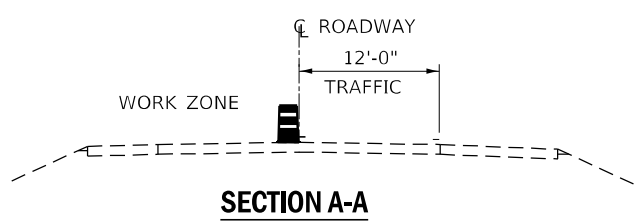
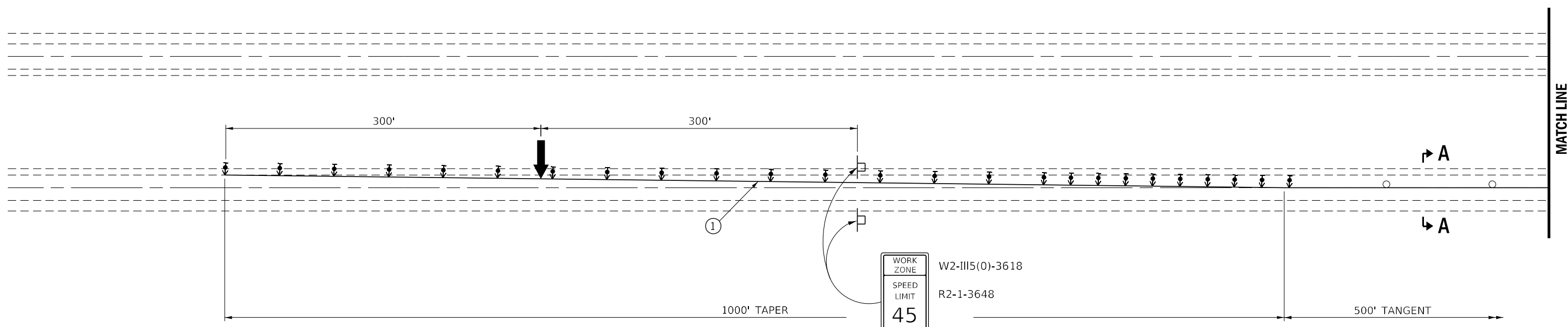
THE FIRST THREE SIGNS, RUMBLE STRIPS AND THE MESSAGE BOARD ARE STATIONARY. THE OTHER SIGNS AND ARROWBOARDS SHALL BE MOVED AS NECESSARY TO MAINTAIN THE REQUIRED DISTANCE FROM THE START OF THE LANE CLOSURE TAPER(S).

SEE SPECIAL PROVISIONS.

FILE NAME =	USER NAME = woodshank1	DESIGNED - RW	REVISED -
pw:\illdot\pw\benley.com\PWIDOT\Documents\IDOT Office\District 3\Projects\I386M11\CADData\I386M11-PLANS.dgn		DRAWN - RW	REVISED -
Default	PLOT SCALE = 100,0000' / in.	CHECKED - YP	REVISED -
	PLOT DATE = 11/20/2021	DATE - 8/27/2021	REVISED -

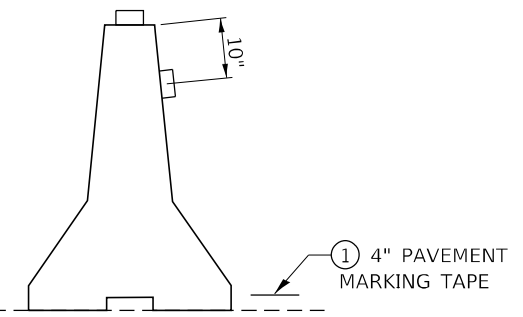
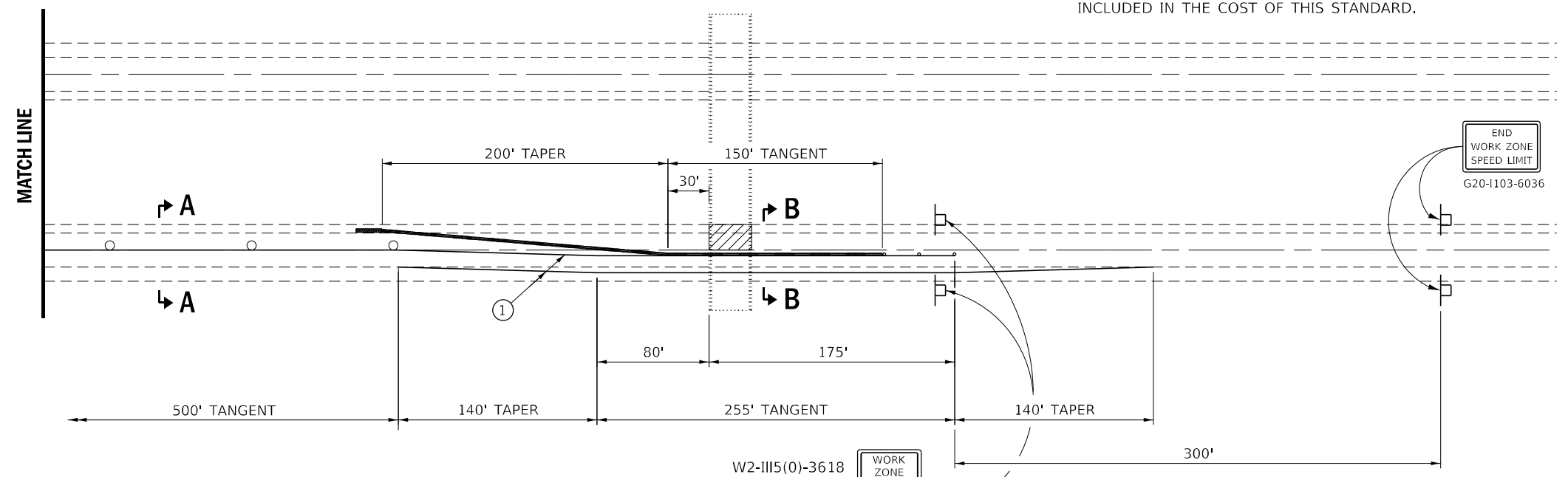
**STATE OF ILLINOIS
DEPARTMENT OF TRANSPORTATION**

TRAFFIC CONTROL AND PROTECTION, STANDARD 701400 FOR LOCATION NO. 1 AND LOCATION NO. 2		F.A. RTE.	SECTION	COUNTY	TOTAL SHEETS	SHEET NO.
SCALE:	SHEET 1 OF 1 SHEETS	VAR	(38-3HB, 38-3HB-1, 122BR)BP	IROQUOIS	26	11
STA.	TO STA.	CONTRACT NO. 66M11				
ILLINOIS FED. AID PROJECT						



SYMBOLS

- ARROW BOARD
- WORK AREA
- SIGN
- DIRECTION INDICATOR BARRICADE WITH STEADY BURN MONODIRECTIONAL LIGHT
- TRAFFIC CONTROL DRUM (TANGENT)
- TRAFFIC CONTROL DRUM, WITH STEADY BURN MONODIRECTIONAL LIGHT (TAPERS)
- TEMPORARY CONCRETE BARRIER
- MONODIRECTIONAL BARRIER WALL/GUARDRAIL MARKERS AT 25' CTS. MARKERS ON RIGHT SHALL BE CRYSTAL AND MARKERS ON LEFT SHALL BE AMBER.
- IMPACT ATTENUATOR



TEMPORARY CONCRETE BARRIER

① TEMPORARY PAVEMENT MARKING TAPE SHALL BE PLACED THROUGHOUT THE TAPER AND ALONG-SIDE THE WORK AREA. THE RIGHT EDGE LINE SHALL BE WHITE AND THE LEFT EDGE LINE SHALL BE YELLOW. COST OF INSTALLING AND REMOVING THE TEMPORARY PAVEMENT MARKING TAPE SHALL BE INCLUDED IN THE COST OF THIS STANDARD.

GENERAL NOTES

THIS STANDARD IS USED WHERE AT ANY TIME ANY VEHICLE, EQUIPMENT, WORKERS OR THEIR ACTIVITIES WILL ENCROACH ON THE PAVEMENT OR WITHIN 24" OF THE EDGE OF PAVEMENT OR SHOULDER FOR DAYLIGHT OPERATIONS EXCEEDING ONE DAY AND WHERE TEMPORARY CONCRETE BARRIER IS UTILIZED.

THIS STANDARD MUST ALWAYS BE USED IN COMBINATION WITH STANDARD 701400.

TEMPORARY CONCRETE BARRIER SHALL BE ACCORDING TO STANDARD 704001.

WHENEVER WORK IS PERFORMED FROM THE BRIDGE DECK, TRAFFIC CONTROL AND PROTECTION SHALL BE ACCORDING TO STANDARD 701201.

WHENEVER WORK IS BEING PERFORMED IN THE ADJACENT LANE, TRAFFIC CONTROL SHALL BE A MIRROR IMAGE OF WHAT IS SHOWN.

MODEL: Default
 FILE NAME: p:\subsect-pw-beckley.com\PIVDOT\Documents\DOT Office\Dir\dir: 3\Project\366641\CAD\Drawings\366641-PLAN.dgn
 PROJECT: 366641

USER NAME = woodshank1	DESIGNED -	REVISED -
	DRAWN -	REVISED -
PLOT SCALE = 100,0000' / in.	CHECKED -	REVISED -
PLOT DATE = 11/20/2021	DATE -	REVISED -

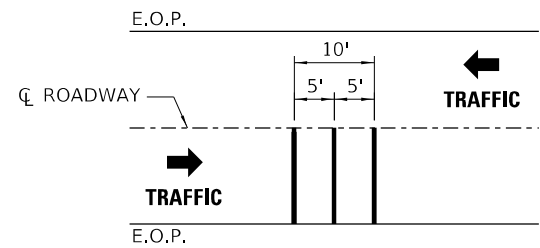
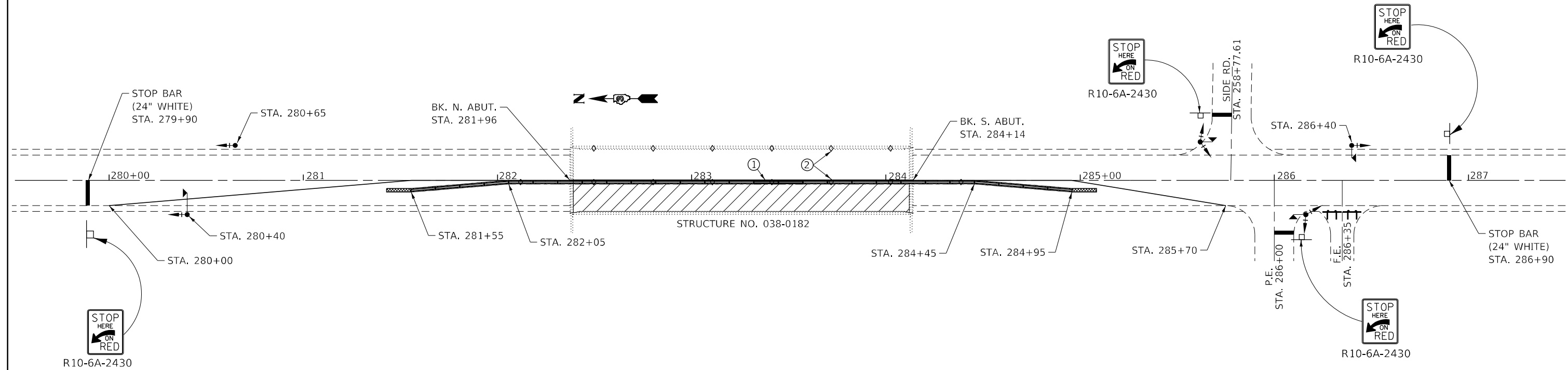
**STATE OF ILLINOIS
DEPARTMENT OF TRANSPORTATION**

**TRAFFIC CONTROL AND PROTECTION, STANDARD 701402
FOR LOCATION NO. 1 AND LOCATION NO. 2**

SCALE: SHEET 1 OF 1 SHEETS STA. TO STA.

F.A. RTE.	SECTION	COUNTY	TOTAL SHEETS	SHEET NO.
VAR	(38-3HB, 38-3HB-1, 122BR)BP	IROUOIS	26	12
CONTRACT NO. 66M11				
ILLINOIS FED. AID PROJECT				

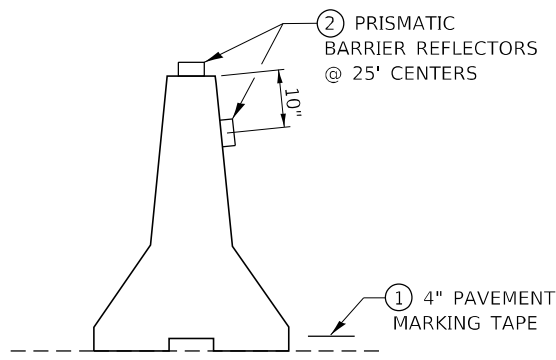
MODEL: Default
 FILE NAME: p:\u0000\paw\beadefy.com\PIV\DOT\Documents\DOT Office\Dir\drct_3\Project\03866M11\CAD\03866M11-PLAN.dgn



LEGEND

- WORK ZONE
- TRAFFIC CONTROL DRUM WITH STEADY BURNING LIGHT (TAPERS)
- TRAFFIC CONTROL DRUM (TANGENTS)
- BARRICADES, TYPE III WITH STEADY BURNING LIGHT
- SIGN
- IMPACT ATTENUATOR, TEMPORARY, (NON-REDIRECTIVE, NARROW) TEST LEVEL 3
- TEMPORARY CONCRETE BARRIER
- TEMPORARY BRIDGE TRAFFIC SIGNAL WITH BACKPLATE AND MICROWAVE DETECTOR
- TEMPORARY BRIDGE TRAFFIC SIGNAL WITH BACKPLATE

TEMPORARY RUMBLE STRIP (SPECIAL)
 FOR PAYMENT PURPOSES, EACH LANE OF TRAFFIC SHALL BE CONSIDERED "ONE EACH".



TEMPORARY CONCRETE BARRIER

GENERAL NOTES

THIS DETAIL SHALL BE USED IN CONJUNCTION WITH TRAFFIC CONTROL AND PROTECTION, STANDARD 701321.

THIS STANDARD IS USED WHERE, AT ANY TIME, ANY VEHICLE, EQUIPMENT, WORKERS, OR THEIR ACTIVITIES WILL ENCROACH ON ONE LANE OF A BRIDGE. TRAFFIC SIGNALS AND A POSITIVE BARRIER ARE REQUIRED.

TRAFFIC SIGNALS SHALL BE OPERATIONAL ONLY WHEN ALL TRAFFIC CONTROLS ARE IN PLACE. WHEN TRAFFIC SIGNALS ARE NOT IN OPERATION, FLAGGERS SHALL BE USED AND TRAFFIC CONTROL SHALL CONFORM TO STANDARD 701201 OR 701206.

TEMPORARY CONCRETE BARRIER SHALL BE ACCORDING TO STANDARD 704001.

EXISTING OR TEMPORARY PAVEMENT MARKINGS SHALL BE ON BOTH SIDES OF OPEN LANE FROM STOP BAR TO STOP BAR.

ALL DIMENSIONS ARE IN INCHES (MILLIMETERS) UNLESS OTHERWISE SHOWN.

TEMPORARY PAVEMENT MARKING AS SHOWN ON THIS DETAIL, SHALL NOT BE PAID FOR SEPARATELY BUT SHALL BE INCLUDED IN THE COST OF THE STANDARD.

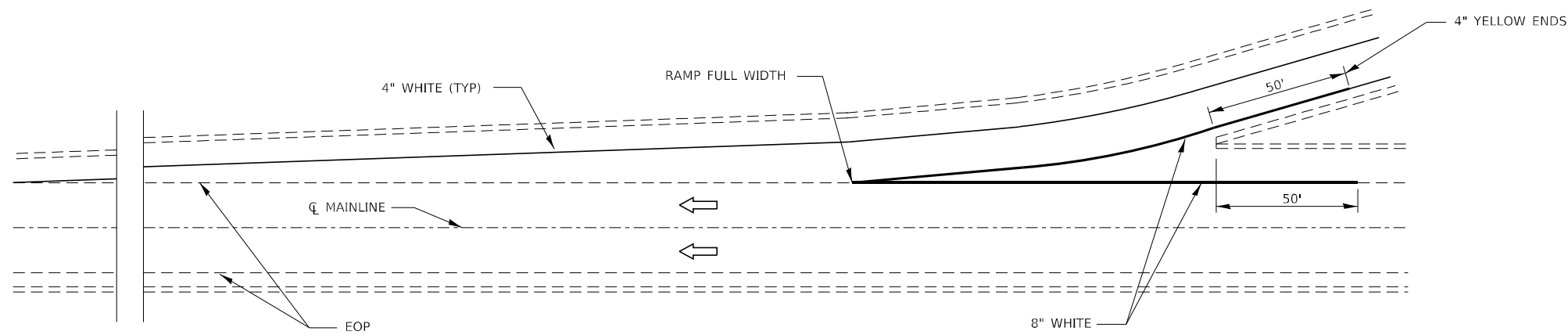
USER NAME = woodshank1	DESIGNED - RW	REVISED -
	DRAWN - RW	REVISED -
PLOT SCALE = 100,0000' / in.	CHECKED - YP	REVISED -
PLOT DATE = 11/20/2021	DATE - 8/27/2021	REVISED -

**STATE OF ILLINOIS
 DEPARTMENT OF TRANSPORTATION**

**TRAFFIC CONTROL AND PROTECTION, STANDARD 701321
 FOR LOCATION NO. 3**

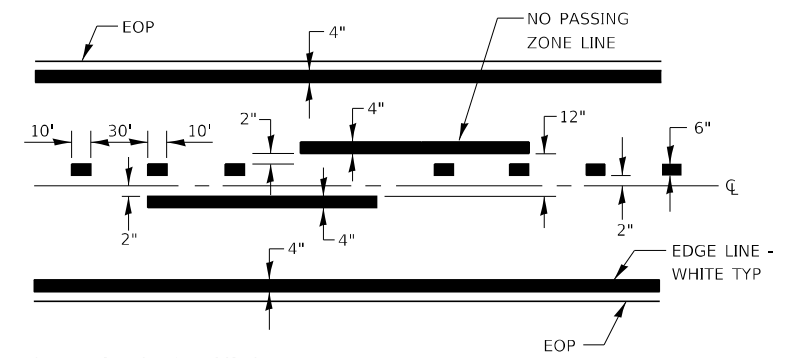
SCALE: SHEET 1 OF 1 SHEETS STA. TO STA.

F.A. RTE.	SECTION	COUNTY	TOTAL SHEETS	SHEET NO.
VAR	(38-3HB, 38-3HB-1, 122BR)BP	IROQUOIS	26	13
			CONTRACT NO. 66M11	
ILLINOIS FED. AID PROJECT				



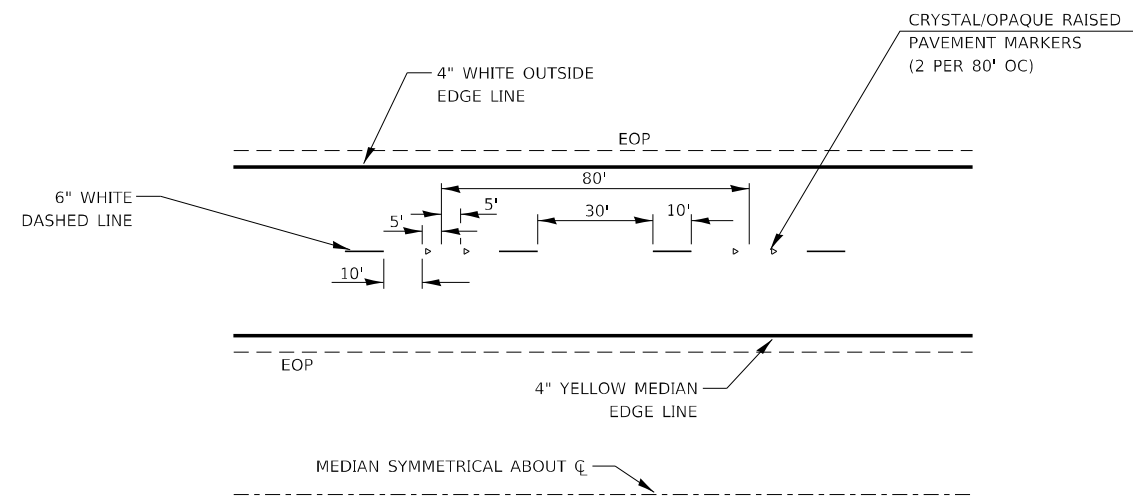
TYPICAL PAVEMENT MARKING FOR ENTRANCE RAMP TERMINALS

INTERSTATES



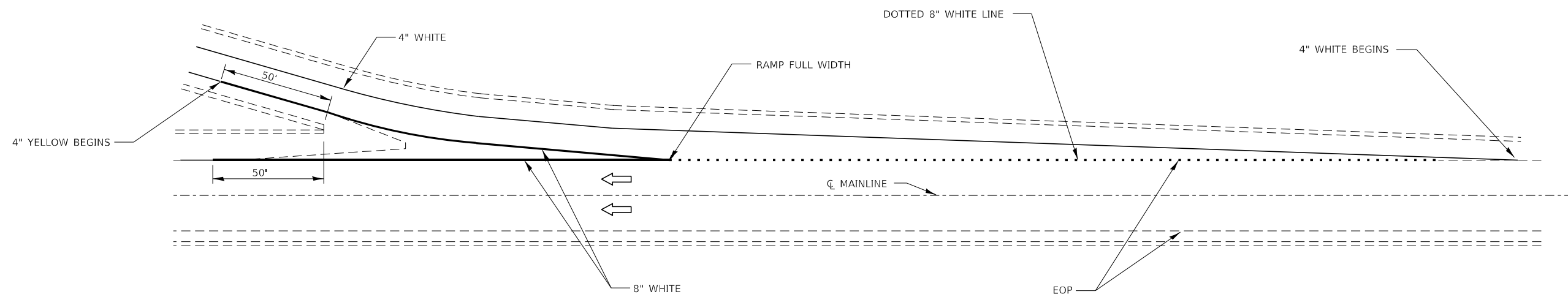
PAVEMENT MARKING

2L, 2W ROADS



TYPICAL PAVEMENT MARKINGS

INTERSTATES



TYPICAL PAVEMENT MARKINGS FOR EXIT RAMP TERMINALS

INTERSTATES

MODEL: Default
 FILE NAME: p:\project-pw-beadby.com\FW\DOT\Documents\DOT Office\Drawings\Project\3866M11\PLAN\ANS.dgn

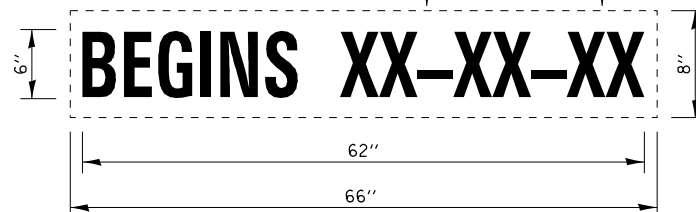
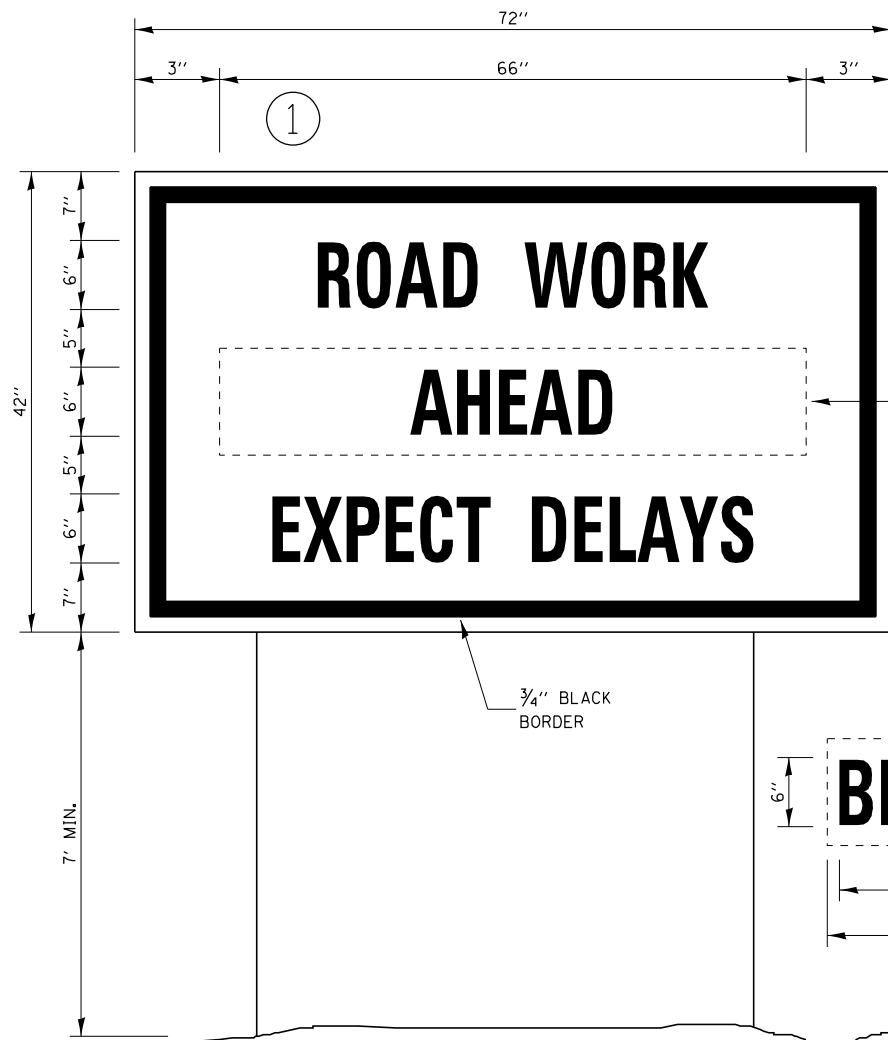
USER NAME = woodshank1	DESIGNED - RW	REVISED -
DRAWN - RW	REVISIONS -	
PLOT SCALE = 100,0000' / in.	CHECKED - YP	REVISED -
PLOT DATE = 11/20/2021	DATE - 8/27/2021	REVISED -

**STATE OF ILLINOIS
DEPARTMENT OF TRANSPORTATION**

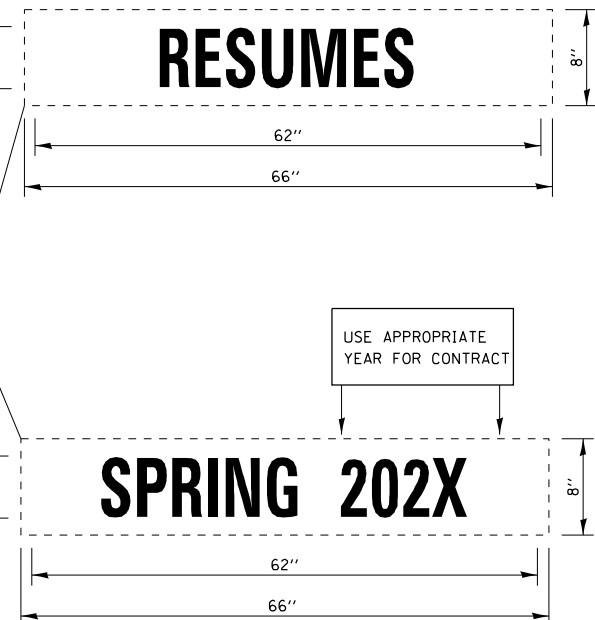
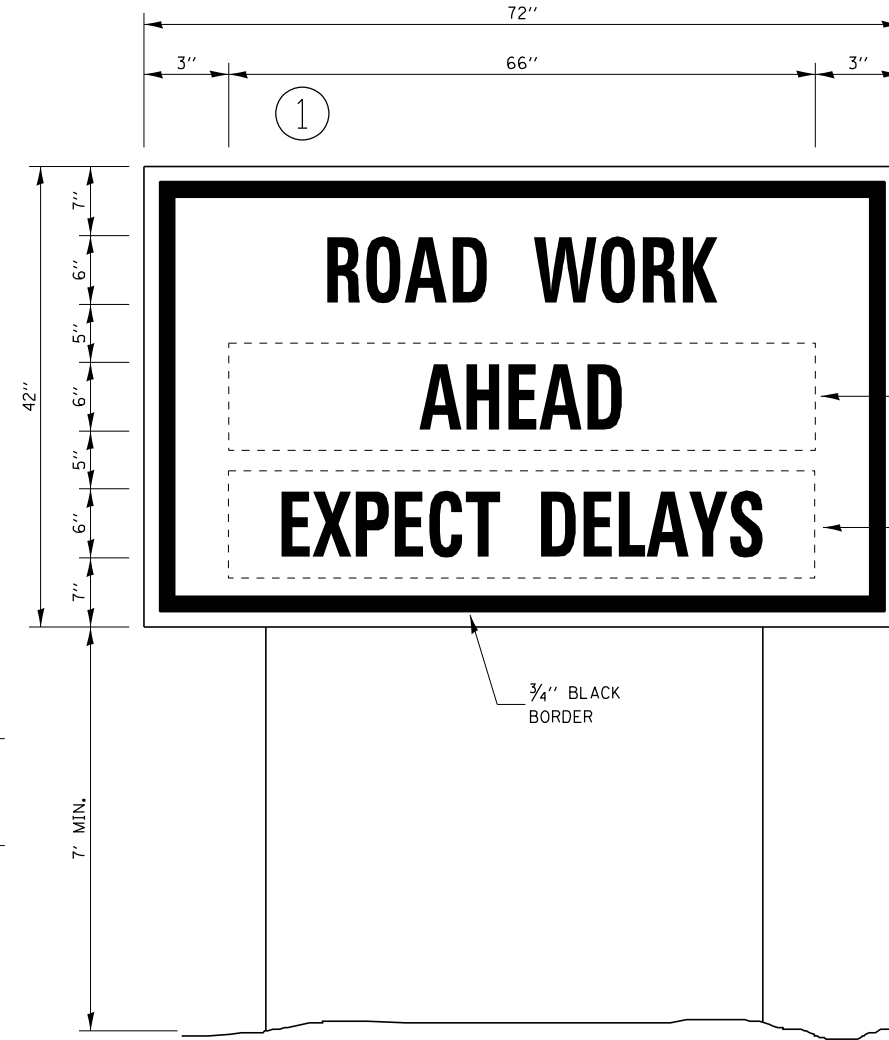
TYPICAL PAVEMENT MARKING

SCALE: SHEET 1 OF 1 SHEETS STA. TO STA.

F.A. RTE.	SECTION	COUNTY	TOTAL SHEETS	SHEET NO.
VAR	(38-3HB, 38-3HB-1, 122BR)BP	IROQUOIS	26	14
CONTRACT NO. 66M11				
ILLINOIS FED. AID PROJECT				



TEMPORARY INFORMATION SIGNING



WINTER SHUT DOWN SIGNING

NOTES:

1. USE 6" D BLACK LETTERING ON FLOURESENT ORANGE BACKGROUND.
2. ERECT SIGNS AT LOCATIONS IN ADVANCE OF THE "ROAD CONSTRUCTION AHEAD" SIGNS AS DIRECTED BY THE ENGINEER.
3. ERECT SIGN ① WITH INSTALLED PANEL ② A MINIMUM OF ONE WEEK PRIOR TO THE START OF THE LANE CLOSURE.
4. REMOVE PANEL ② ON THAT DATE.
5. SEE SPECIAL PROVISION "TEMPORARY INFORMATION SIGNING" FOR ADDITIONAL INFORMATION.
6. WILL BE PAID FOR PER SQ FT AS "TEMPORARY INFORMATION SIGNING". EACH SIGN = 21 SQ FT AND THE DATE PANEL ② WILL NOT BE MEASURED SEPARATELY FOR PAYMENT.

MODEL: Default
FILE NAME: p:\project-pw-beadefy.com\FW\DOT\Documents\DOT Office\Dir\dir: 3\Project\366M11\CADD\366M11-PLAN.dgn

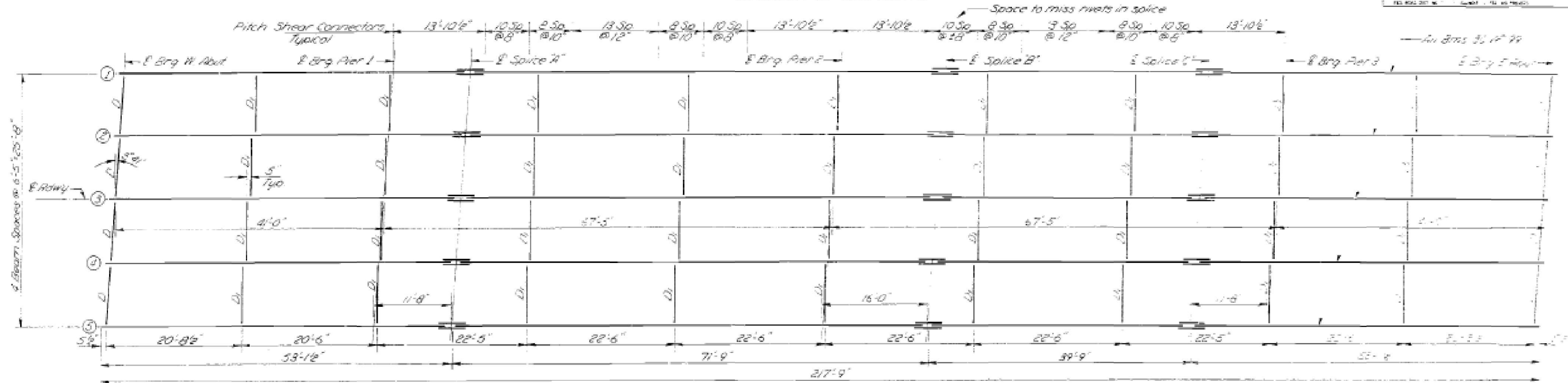
USER NAME = woodshank1	DESIGNED - RW	REVISED -
	DRAWN - RW	REVISED -
PLOT SCALE = 100,0000 ' / in.	CHECKED - YP	REVISED -
PLOT DATE = 11/20/2021	DATE - 8/27/2021	REVISED -

**STATE OF ILLINOIS
DEPARTMENT OF TRANSPORTATION**

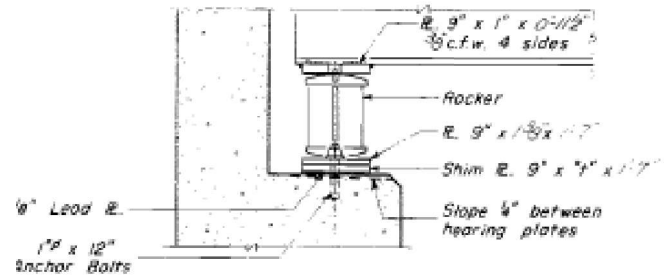
TEMPORARY INFORMATION SIGNING

SCALE: SHEET 1 OF 1 SHEETS STA. TO STA.

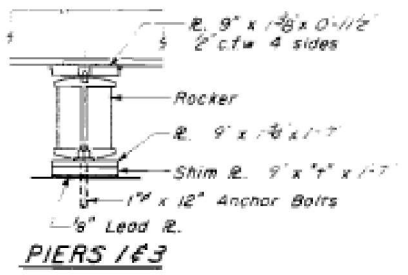
F.A. RTE.	SECTION	COUNTY	TOTAL SHEETS	SHEET NO.
VAR	(38-3HB, 38-3HB-1, 122BR)BP	IROQUOIS	26	15
CONTRACT NO. 66M11				
ILLINOIS FED. AID PROJECT				



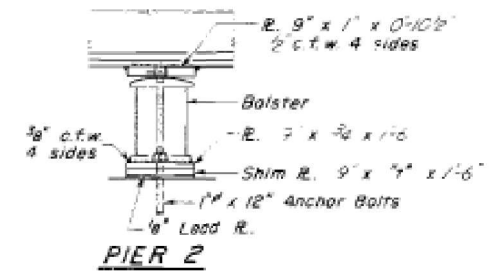
FRAMING PLAN



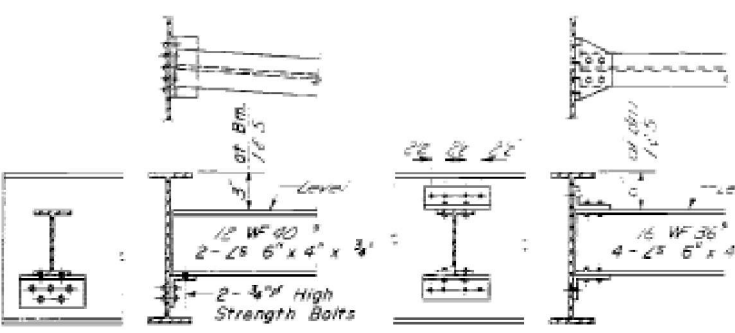
SECTION AT ABUTMENT



PIERS 1&3

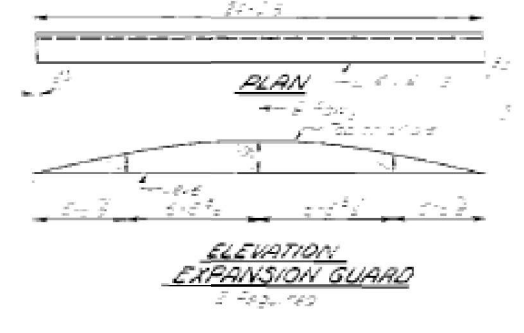


PIER 2

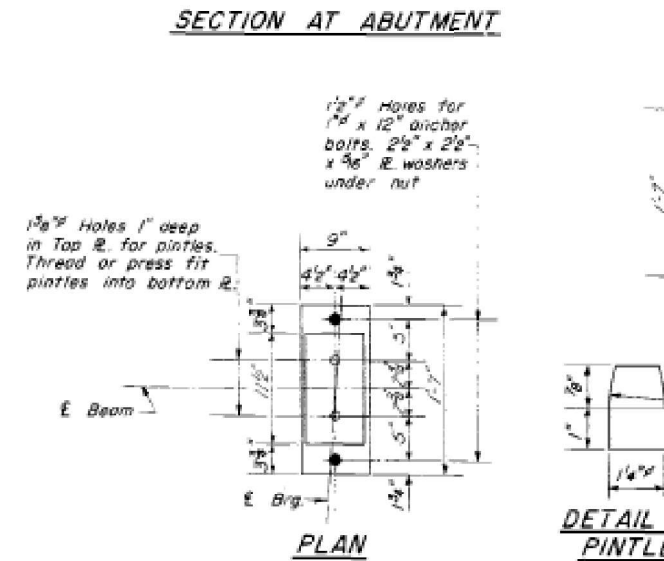


DIAPHRAGM D
8 Required

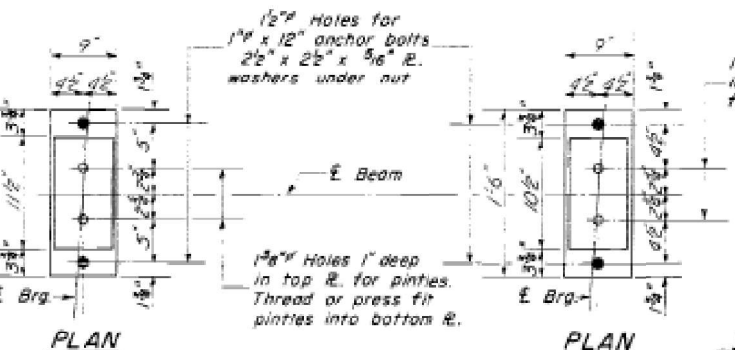
DIAPHRAGM D1
26 Required



ELEVATION EXPANSION GUARD

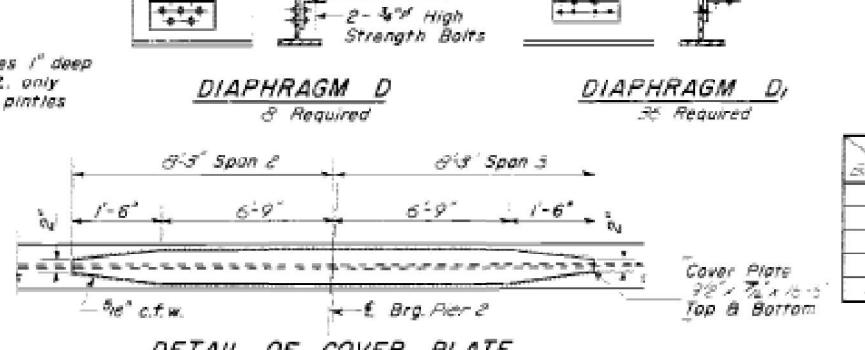


PLAN



PLAN

PLAN



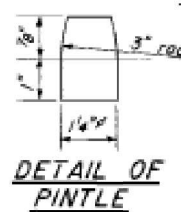
DETAIL OF COVER PLATE

ELEVATION TOP OF WF

Station	Top of WF	Top of Deck	Top of Roadway
1	668.47	668.47	668.47
2	668.47	668.47	668.47
3	668.47	668.47	668.47
4	668.47	668.47	668.47
5	668.47	668.47	668.47

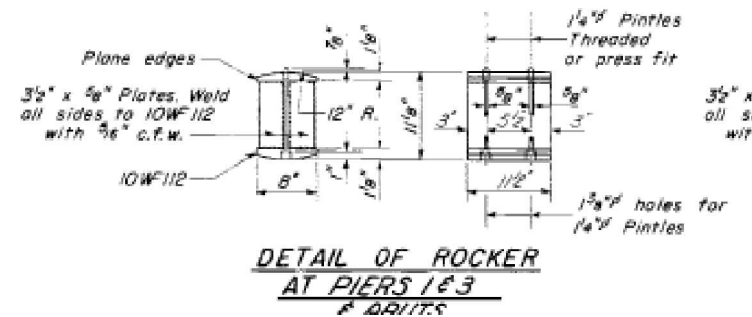
TABLE OF "E" DIMENSIONS

Beam	Bearings
1, 2, 4, 5	5
3	5

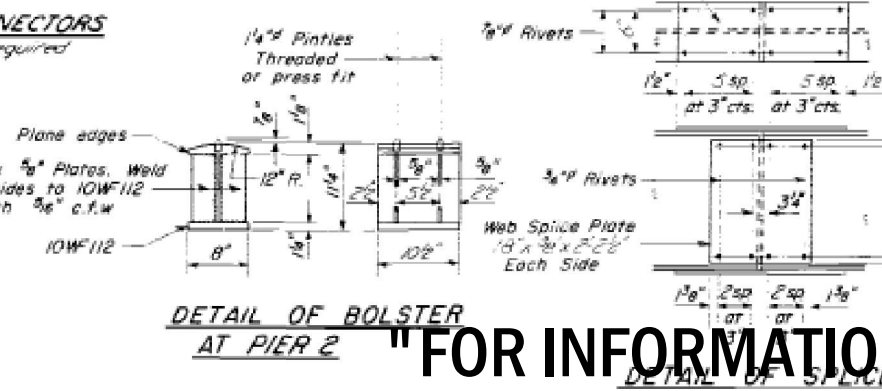


DETAIL OF PINTLE

SHEAR CONNECTORS
1500 Required



DETAIL OF ROCKER AT PIERS 1&3



DETAIL OF BOLSTER AT PIER 2



DETAIL OF SPICE

DESIGNED: *R. J. ...*
CHECKED: *K. L. ...*
DRAWN: *W. A. Sausman Jr.*
APPROVED: *R. J. ...*
DATE: SEPT. 18 1962

-2-C 7-2-62

"FOR INFORMATION ONLY"

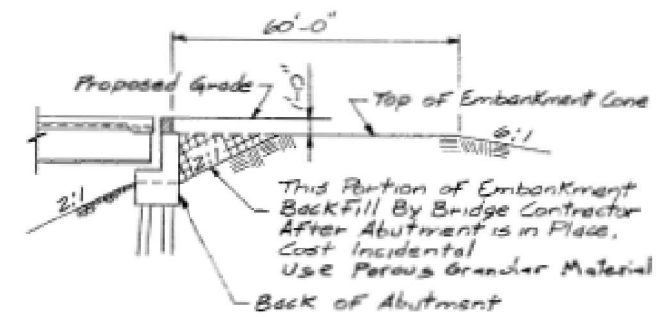
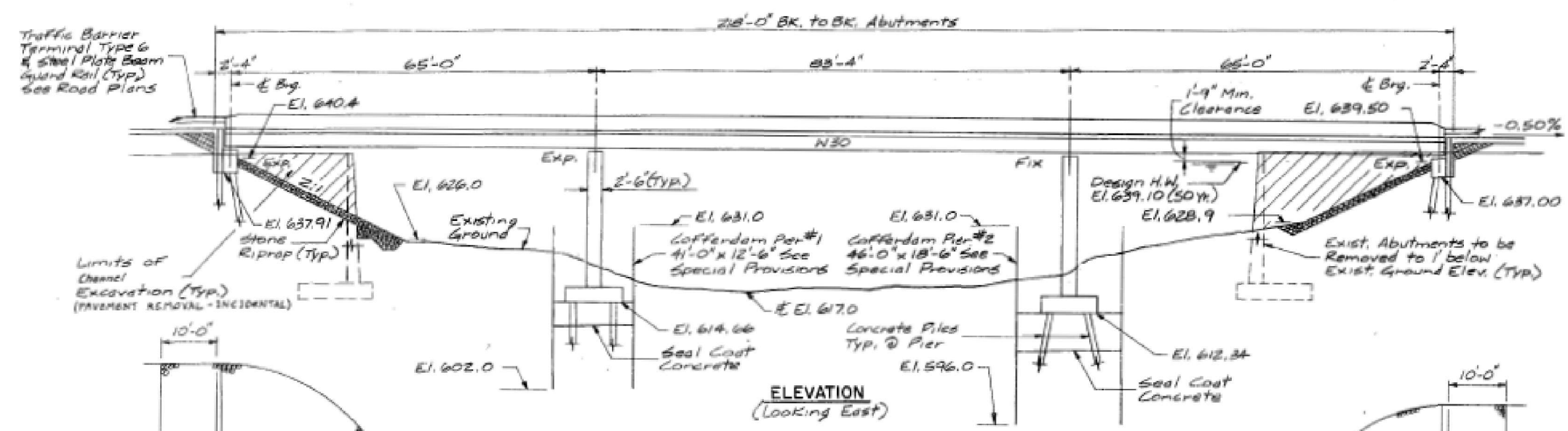
STRUCTURAL STEEL
E.T. RT. 57-SEC. 38-3HB-1
IROQUOIS COUNTY
STA. 260+47.58

Bench Mark: 86' South of N. Abut. on Top of East Handrail - Chiseled Notch on Steel El. 644.81
 Exist. Structure: Thru Truss 143' Long x 24' Wide w/ Conc. Deck on Closed Conc. Abuts. to be Removed. S.N. 038-0107
 Salvage: None
 Note: Traffic to be Detoured during Construction.

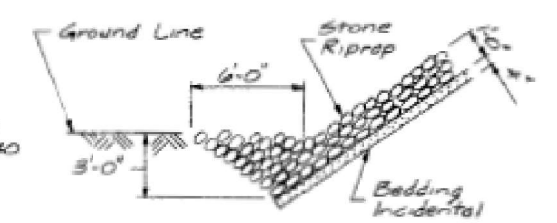
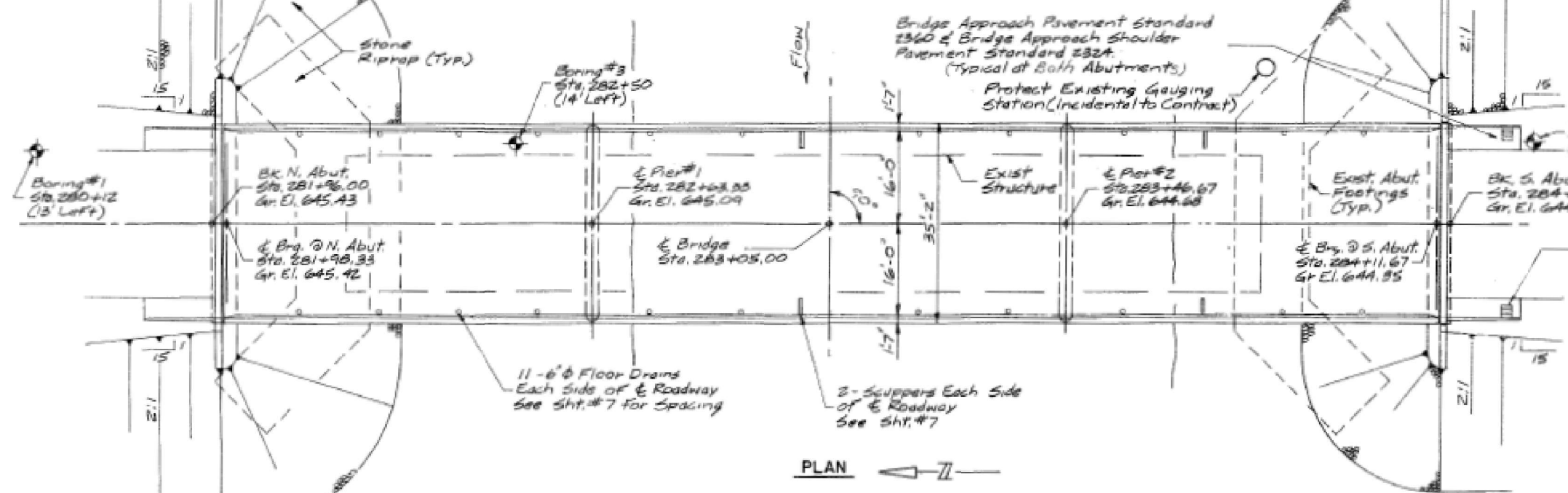
DESIGN SPECIFICATIONS
 AASHTO 1983, 1984 & 1985 Interim Specification
 Allow #25 / 54 Ft. For Future Wearing Surface

DESIGN STRESSES
 (Field Units)
 $f'_c = 3,500$ psi
 $f_y = 60,000$ psi (Reinforcement)
 $f_y = 50,000$ psi (M 222 Structural Steel)
 $f_y = 36,000$ psi (M 185 Structural Steel)

DATE	SECTION	COUNTY	SHEET NO.
5/2	122 BR	IROQUOIS	85 12
Sht. 1 of 17 Shts.			



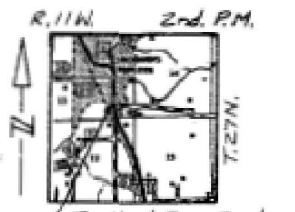
EMBankment Cone Detail
 Note: Minimum Embankment Required Before Abutments Can Be Constructed For Side Slopes See Road Cross Sections.



RIPRAP ANCHOR DETAIL

STA. 283+05.00
 BUILT 19 BY
 STATE OF ILLINOIS
 SBI RTE 116 SEC 122 BR
 LOADING HS-20
 SNO38-0182

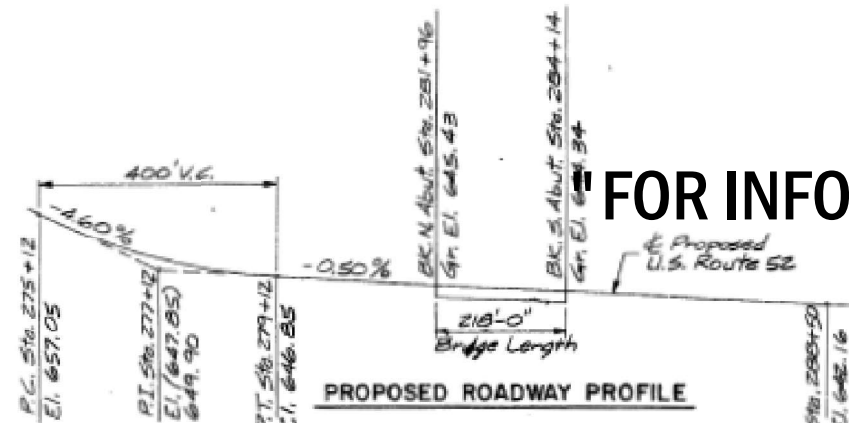
NAME PLATE



LOCATION SKETCH

WATERWAY INFORMATION

Flood Yr.	Freq.	Q	Opening Sq. Ft.		Not. H.N.A.	Head - Ft.		Headwater Exist. Prop.	
			Exist.	Prop.		Exist.	Prop.		
Design	50	8160	2813	3005	639.10	0.11	0.09	639.21	639.19
Base	100	9060	2912	3127	639.80	0.15	0.12	639.95	639.92
Overlapping	500	11240		3174	641.30		0.23		641.53
Max. Calc.	500								



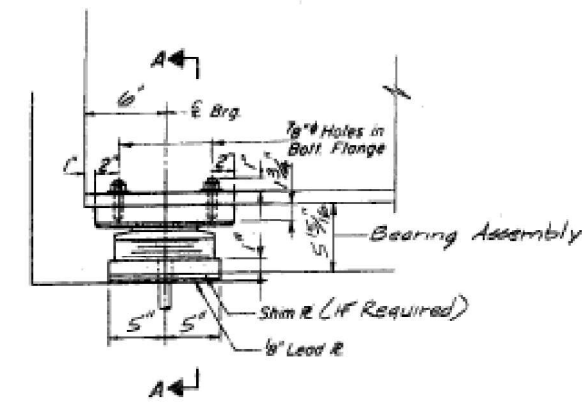
"FOR INFORMATION ONLY"



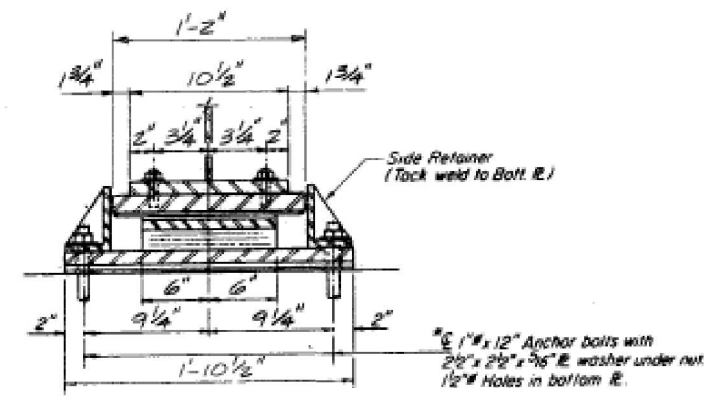
RALPH HAHN AND ASSOCIATES, INC.
 ENGINEERS-ARCHITECTS-CONSULTANTS
 1320 SOUTH STATE STREET
 SPRINGFIELD, ILLINOIS 62704

LOADING HS-20-44
GENERAL PLAN & ELEVATION
 BRIDGE OVER IROQUOIS RIVER
 U.S. ROUTE 52 (S.B.I. 116)
 SECTION 122 BR
 IROQUOIS COUNTY
 STATION 283+05.00

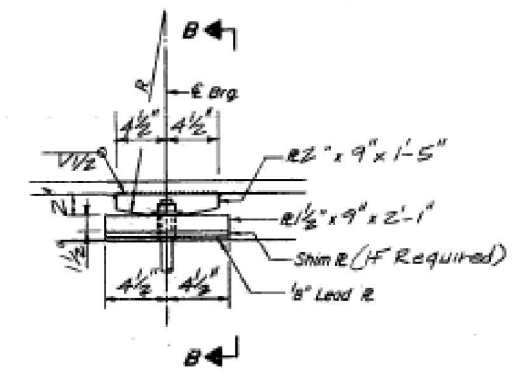
US RTE.	SECTION	COUNTY	TOTAL SHEETS
52	122 BR	IROQUOIS	35
STA.	TO STA.		



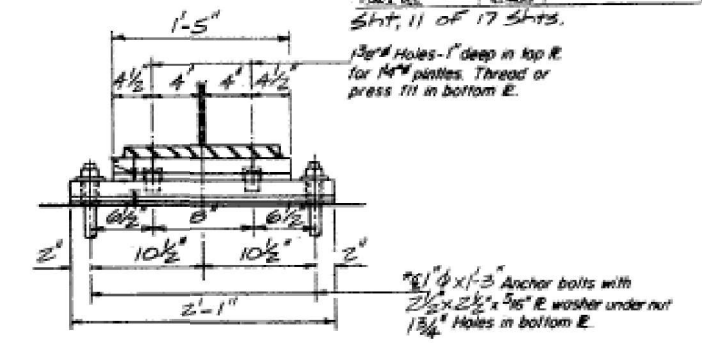
ELEVATION AT ABUT.



SECTION A-A

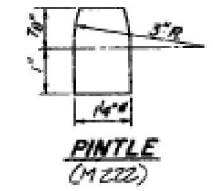


ELEVATION AT PIER



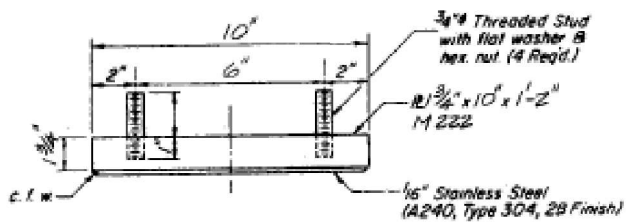
SECTION B-B

FIXED BEARING
(All Steel MZZZ)

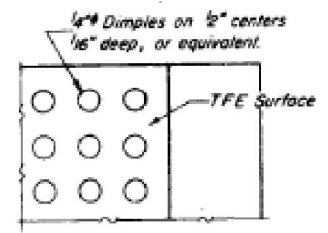


TYPE II TFE ELASTOMERIC EXP. BRG.

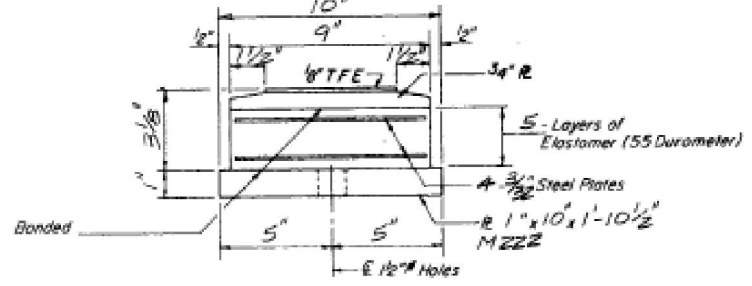
*Note: After girders have been erected holes of expansion bearings shall be drilled and anchor bolts grouted in place. Anchor bolts of fixed bearings may be built into the masonry.



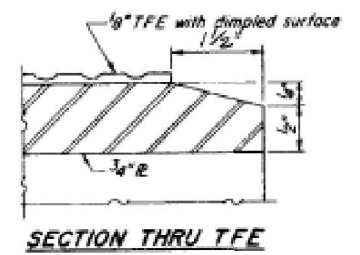
TOP BEARING ASSEMBLY



PLAN-TFE SURFACE



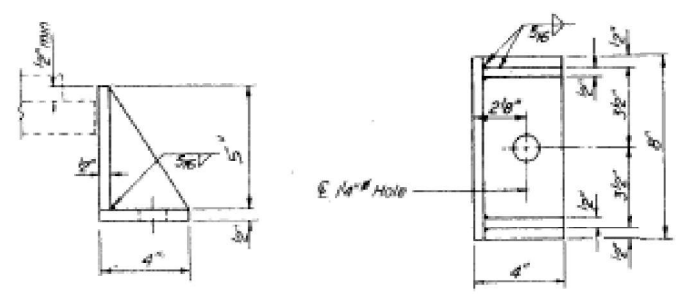
BOTTOM BEARING ASSEMBLY



SECTION THRU TFE

Note: The 1/8" TFE sheet shall be bonded directly to the top steel plate with a two-component, medium viscosity epoxy resin, conforming to the requirements of the Federal Specification MMM-A-134, Type I. The bond agent shall be applied on the full area of the contact surfaces.

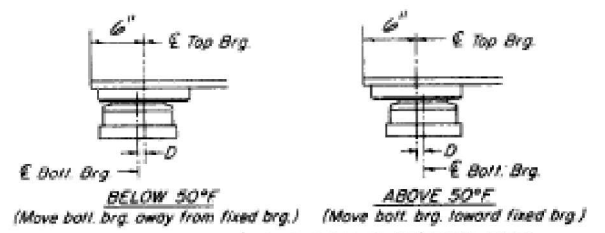
Bonding of 1/8" TFE sheet during vulcanizing process will be permitted provided the process and method of adjusting assembly height is approved by the Engineer.



SIDE RETAINER (MZZZ)

Equivalent rolled angle with stiffeners will be allowed in lieu of welded plates

NORTH ABUTMENT



SETTING ANCHOR BOLTS AT EXP. BRG.
D = 1/8" per each 100' of expansion for every 15° temp. change from the normal temp. of 50°F

PIER #2

"FOR INFORMATION ONLY"

BEARINGS AT N. ABUT. & PIER # 2
BRIDGE OVER IROQUOIS RIVER
U.S. ROUTE 52 (S.B. I. 116)
SECTION 122 BR
IROQUOIS COUNTY
STATION 283+05.00

MODEL: Default FILE NAME: p:\induct-cw-loc\paw\paw\INDOT\Documents\DOT Office\Drawings\3\Project\3\366641\1\038001\1\038001.dwg

USER NAME = woodshank1	DESIGNED - RW	REVISED -
PLOT SCALE = 100,0000' / in.	CHECKED - YP	REVISED -
PLOT DATE = 11/20/2021	DATE - 8/27/2021	REVISED -

STATE OF ILLINOIS
DEPARTMENT OF TRANSPORTATION

EXISTING STRUCTURE DETAILS FOR LOCATION NO. 3
STRUCTURE NO. 038-0182

SCALE: SHEET 4 OF 5 SHEETS STA. TO STA.

F.A. RTE.	SECTION	COUNTY	TOTAL SHEETS	SHEET NO.
VAR	(38-3HB, 38-3HB-1, 122BR)BP	IROQUOIS	26	25
CONTRACT NO. 66M11				
ILLINOIS FED. AID PROJECT				

