

STATE OF ILLINOIS
DEPARTMENT OF TRANSPORTATION

F.A. RTE.	SECTION	COUNTY	TOTAL SHEETS	SHEET NO.
VAR	**	ILLINOIS	13	1

** D3 BRIDGE DECK SEALING FY 2022
* DEKALB, KENDALL, GRUNDY, & LASALLE

INDEX OF SHEETS

- 1 COVER SHEET
- 2 GENERAL NOTES
- 3 SUMMARY OF QUANTITIES
- 4 - 5 DEKALB COUNTY SCHEDULE & MAP
- 6 - 7 KENDALL COUNTY SCHEDULE & MAP
- 8 - 9 GRUNDY COUNTY SCHEDULE & MAP
- 10 - 11 LASALLE COUNTY SCHEDULE & MAP
- 12 - 13 DETAILS

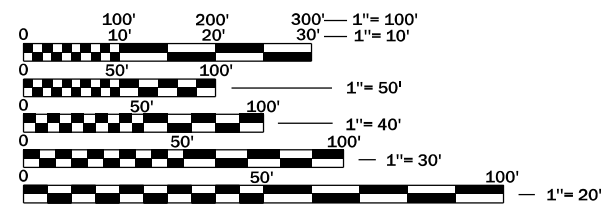
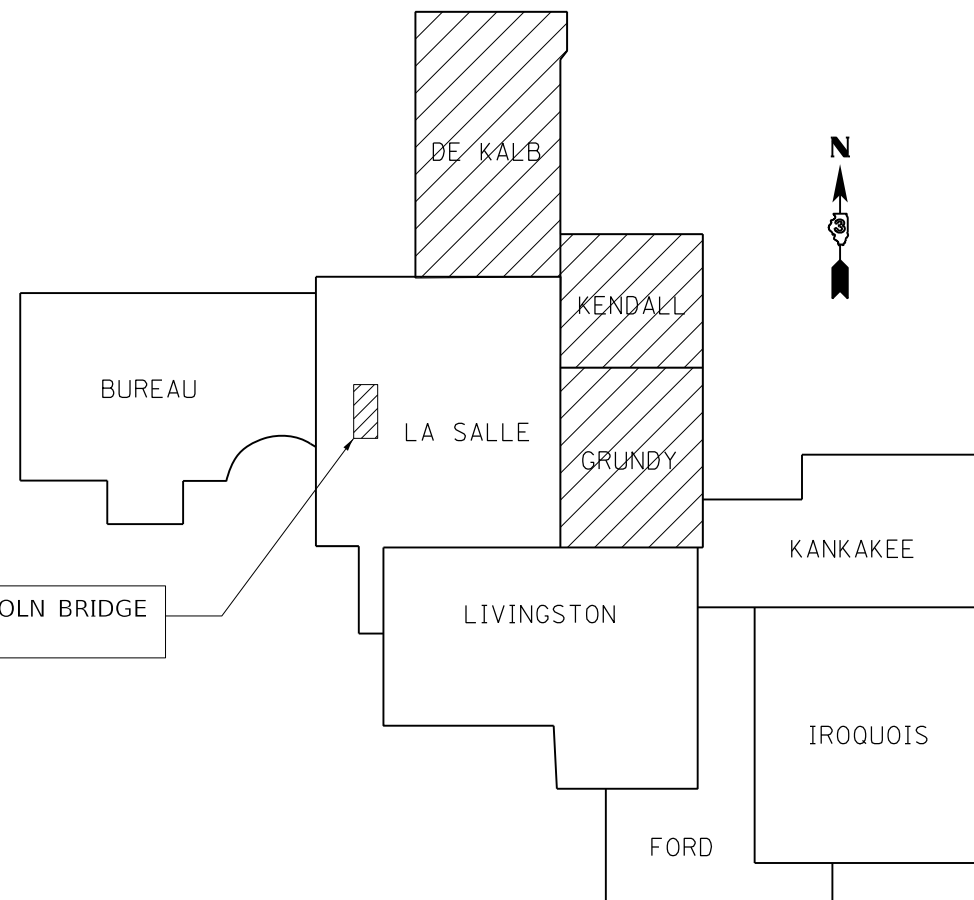
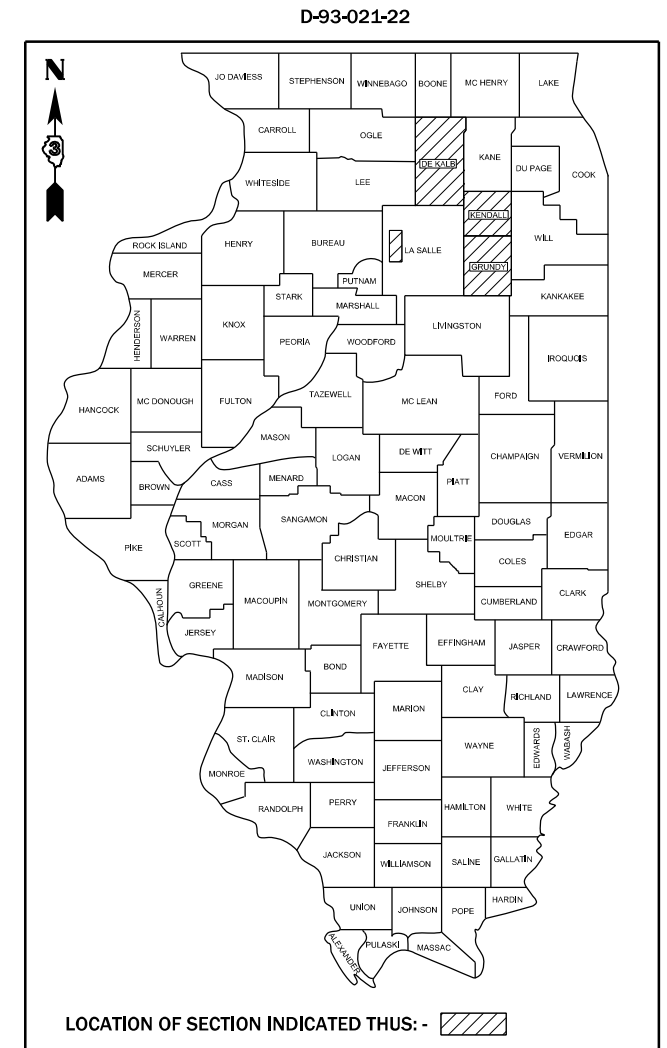
LIST OF ILLINOIS DOT HIGHWAY STANDARDS

- 000001-08 STANDARD SYMBOLS, ABBREVIATIONS AND PATTERNS
- 701201-05 LANE CLOSURE, 2L, 2W, DAY ONLY, FOR SPEEDS ≥ 45 MPH
- 701400-11 APPROACH TO LANE CLOSURE, FREEWAY/EXPRESSWAY
- 701406-13 LANE CLOSURE, FREEWAY/EXPRESSWAY, DAY OPERATIONS ONLY
- 701411-09 LANE CLOSURE, MULTILANE, AT ENTRANCE OR EXIT RAMP FOR SPEEDS ≥ 45 MPH
- 701426-09 LANE CLOSURE, MULTILANE INTERMITTENT OR MOVING OPERATION, FOR SPEEDS ≥ 45 MPH
- 701428-01 TRAFFIC CONTROL, SETUP AND REMOVAL, FREEWAY/EXPRESSWAY
- 701456-05 PARTIAL EXIT RAMP CLOSURE FREEWAY/EXPRESSWAY
- 701501-06 URBAN LANE CLOSURE, 2L, 2W, UNDIVIDED
- 701601-09 URBAN LANE CLOSURE, MULTILANE, 1W OR 2W WITH NONTRAVERSABLE MEDIAN
- 701602-10 URBAN LANE CLOSURE, MULTILANE, 2W WITH BIDIRECTIONAL LEFT TURN LANE
- 701606-10 URBAN LANE CLOSURE, MULTILANE, 2W WITH MOUNTABLE MEDIAN
- 701901-08 TRAFFIC CONTROL DEVICES

**PROPOSED
HIGHWAY PLANS**

**VARIOUS ROUTES
SECTION D3 BRIDGE DECK SEALING FY 2022
PROJECT
BRIDGE DECK SEALING
VARIOUS COUNTIES**

C-93-042-22



FULL SIZE PLANS HAVE BEEN PREPARED USING STANDARD ENGINEERING SCALES. REDUCED SIZED PLANS WILL NOT CONFORM TO STANDARD SCALES. IN MAKING MEASUREMENTS ON REDUCED PLANS, THE ABOVE SCALES MAY BE USED.

J.U.L.I.E.
JOINT UTILITY LOCATION INFORMATION FOR EXCAVATION
1-800-892-0123
OR 811

PROJECT ENGINEER: BRAD DUNCAN, P.E.
UNIT CHIEF: LUIS CALDERON, P.E.
DISTRICT 3 NO. (815) 434-6131
CONTRACT NO. 66M22

STATE OF ILLINOIS
DEPARTMENT OF TRANSPORTATION

SUBMITTED October 21, 2021

David Alford
REGIONAL ENGINEER

December 10, 2021
[Signature]
ENGINEER OF DESIGN AND ENVIRONMENT

December 10, 2021
Stephen M. Smith
DIRECTOR OF HIGHWAYS PROJECT IMPLEMENTATION

**PRINTED BY THE AUTHORITY
OF THE STATE OF ILLINOIS**

GENERAL NOTES

ANY REFERENCE TO A STANDARD IN THESE PLANS SHALL BE INTERPRETED TO MEAN THE EDITION AS INDICATED BY THE SUBNUMBER SHOWN IN THE LIST OF STANDARDS OR THE COPY INCLUDED IN THESE PLANS.

THE ENGINEER WILL BE THE SOLE JUDGE CONCERNING CURING TIME FOR THE SEALER.

COMMITMENTS

1) CHANGES / ADJUSTMENTS IN DECK SEALING QUANTITIES LISTED IN THIS CONTRACT MUST BE PROVIDED TO THE DISTRICT VIA AS-BUILTS AND SCANNED COPIES SENT TO PROGRAM DEVELOPMENT & OPERATIONS.

2) DELETION OR ADDITION OF STRUCTURES TO BE SEALED MUST BE PROVIDED WITH JUSTIFICATION FOR APPROVAL. THIS INFORMATION IS TO BE SENT TO DISTRICT PROGRAM DEVELOPMENT AND BRIDGE MAINTENANCE SECTION.

STATE OF ILLINOIS
DEPARTMENT OF TRANSPORTATION
DISTRICT THREE
AS BUILT INFORMATION

SUPERVISING CONSTRUCTION FIELD ENGINEER

RESIDENT ENGINEER / TECHNICIAN

START & END DATES
OF CONSTRUCTION:

INSPECTORS:

STATE OF ILLINOIS
DEPARTMENT OF TRANSPORTATION
DISTRICT THREE

PREPARED BY: _____
DISTRICT STUDIES & PLANS ENGINEER

DATE: _____

EXAMINED BY: _____
DISTRICT CONSTRUCTION ENGINEER

DISTRICT MATERIALS ENGINEER

DISTRICT OPERATIONS ENGINEER

MODEL: \\MODELS\MAR\F5 FILE: \\MAR\F5\work\asbld\calderon\60753183\0366M22-ah-cover.dgn

** D3 BRIDGE DECK SEALING FY 2022
* DEKALB, KENDALL, GRUNDY, & LASALLE

USER NAME = calderonl	DESIGNED -	REVISED -	STATE OF ILLINOIS DEPARTMENT OF TRANSPORTATION	F.A. RTE.	SECTION	COUNTY	TOTAL SHEETS	SHEET NO.
	DRAWN -	REVISED -		VAR	**	*	13	2
PLOT SCALE = 100,0000 ' / in.	CHECKED -	REVISED -		CONTRACT NO. 66M22				
PLOT DATE = 10/20/2021	DATE -	REVISED -		SCALE:	SHEET OF SHEETS	STA. TO STA.	ILLINOIS FED. AID PROJECT	

CODE NO.	ITEM	UNIT	TOTAL QUANTITY	CONSTRUCTION CODE			
				STP 100% STATE BRIDGE	STP 100% STATE BRIDGE	STP 100% STATE BRIDGE	STP 100% STATE BRIDGE
				0047	0047	0047	0047
				DEKALB CO	KENDALL CO	GRUNDY CO	LASALLE CO
67100100	MOBILIZATION	L SUM	1	0.25	0.25	0.25	0.25
70100420	TRAFFIC CONTROL AND PROTECTION, STANDARD 701411	EACH	3			2	1
70100450	TRAFFIC CONTROL AND PROTECTION, STANDARD 701201	L SUM	1	0.3	0.35	0.35	0
70100700	TRAFFIC CONTROL AND PROTECTION, STANDARD 701406	L SUM	1			0.5	0.5
70100825	TRAFFIC CONTROL AND PROTECTION, STANDARD 701456	L SUM	1			1	
70102620	TRAFFIC CONTROL AND PROTECTION, STANDARD 701501	L SUM	1	0.3	0.35	0.35	
70102625	TRAFFIC CONTROL AND PROTECTION, STANDARD 701606	L SUM	1		1		
70102630	TRAFFIC CONTROL AND PROTECTION, STANDARD 701601	L SUM	1		0.5	0.5	
70102632	TRAFFIC CONTROL AND PROTECTION, STANDARD 701602	L SUM	1	0.5	0.5		
70107025	CHANGEABLE MESSAGE SIGN	CAL DA	84			56	28
70200100	NIGHTTIME WORK ZONE LIGHTING	L SUM	1			1	
X5870015	BRIDGE DECK CONCRETE SEALER	SQ FT	1,391,206	98,988	88,118	476,981	727,119
Z0048665	RAILROAD PROTECTIVE LIABILITY INSURANCE	L SUM	1	0.35		0.35	0.30

* SPECIALTY ITEM

MODEL: M00DEFI.M01F5
FILE: M00DEFI.M01F5
C:\Users\calderon\OneDrive\Documents\66M22-21-500_Schedule_M00.dgn

** D3 BRIDGE DECK SEALING FY 2022
** DEKALB, KENDALL, GRUNDY, & LASALLE

USER NAME = calderon	DESIGNED -	REVISED -	STATE OF ILLINOIS DEPARTMENT OF TRANSPORTATION	SUMMARY OF QUANTITIES				F.A. RTE.	SECTION	COUNTY	TOTAL SHEETS	SHEET NO.
PLOT SCALE = 100.0000' / in.	DRAWN -	REVISED -						VAR	**	*	13	3
PLOT DATE = 10/20/2021	CHECKED -	REVISED -		SCALE:	SHEET	OF	SHEETS	STA.	TO	STA.	CONTRACT NO. 66M22	
	DATE -	REVISED -									ILLINOIS FED. AID PROJECT	

CONCRETE SEALER SCHEDULE - DEKALB COUNTY

STRUCTURE NUMBER	FACILITY CARRIED	APPROXIMATE LOCATION	FEATURE CROSSED	DECK WIDTH	PARAPET SURFACE	RAISED MEDIAN SURFACE	DECK LENGTH	SEAL AREA	TRAFFIC CONTROL AND PROTECTION STANDARD	SEE NOTES
				FEET	FEET	FEET	FEET	SQ FT		
DEKALB COUNTY										
NON-INTERSTATE STRUCTURES = 19										
019-0005	ILL 23	0.7 MI S JCT ILL 72	CC & PAC. RR	48			142.8	6,854	701201	*
019-0012	ILL 64	1.5 MI W JCT ILL 23	S BR KISHWAUKEE RIV.	34	7.4		121.5	5,030	701201	
019-0026	ILL 72	W EDGE GENOA	S BR KISHWAUKEE RIV.	36	7.4		230	9,982	701201	
019-0032	US 30	.5 MI E OF SHABBONA	BN RR	32	7.4		299.8	11,812	701201	
019-0033	ILL 72	.5 MI W KANE CO LN	COON CREEK	34	7.4		82	3,395	701201	
019-0034	ILL 72	1.5 MI W KINGSTON	LEE SLOUGH	32	7.4		73.5	2,896	701201	
019-0036	US 30	.5 MI W HINCKLEY	LITTLE ROCK CREEK	40	7.4		137	6,494	701201	
019-0037	ILL 72	3 MI NW OF KIRKLAND	DRAINAGE DITCH	32	7.4		55	2,167	701201	
019-0038	IL 72	0.3 MI. W. KIRKLAND	UNNAMED CREEK	32	7.4		40.7	1,604	701201	
019-0039	US 34	1.1 MI. W. SANDWICH	SOMONAUK CREEK	40	7.4		126.5	5,996	701201	
019-0040	IL 64	5 MI. E. OGLE CO LN	OWENS CREEK	36	7.4		69	2,995	701201	
019-0041	IL 38	1.5 MI. E. CRESTON	E. BR. KILBUCK CREEK	40	7.4		75	3,555	701201	
019-0043	ILL 23	0.4 MI N JCT ILL 64	E BR,S BR KISHW* RIV	59	7.4		120.6	8,008	701501	
019-0044	IL 38	0.6 MI W JCT IL 23	S BR KISHWAUKEE RIV.	59	1.6		118	7,151	701602	
019-0045	IL 38	1.9 MI E SOMONAUK RD	UNION DITCH #1	40	7.6		61.5	2,927	701201	
019-0047	ILL 72	W EDGE OF KIRKLAND	SOO LINE/IC & E RR	32	7.6		163.5	6,475	701201	
019-0048	IL 64	1.0 MI E OF IL 23 (N)	E/S BR KISHWAUKEE	40	6.8		93	4,352	701201	
019-0049	US 30	1.34 MI E OF IL 23	SOMONAUK CREEK	40	7.6		81.75	3,891	701201	
019-0050	IL 72	0.1 MI E OGLE CO	TRIB BRANCH KISHWAUKEE	36.3	8.2		76.5	3,404	701201	
NON-INTERSTATE STRUCTURES SUB-TOTAL								98,988		
DEKALB COUNTY TOTALS								98,988		

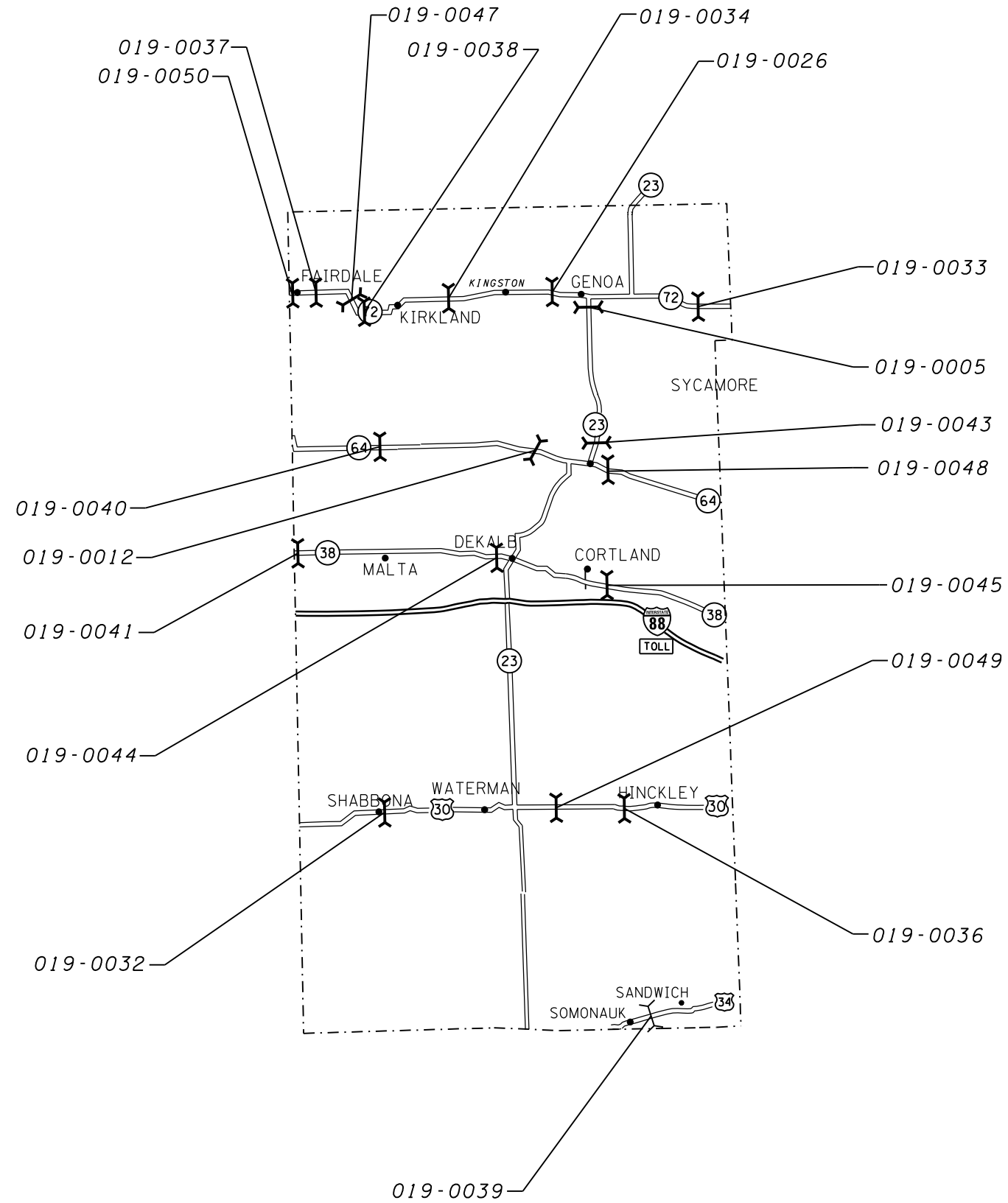
NOTE: *STRUCTURE HAS EXIST PCC OVERLAY WHICH WILL REQUIRE ADDITIONAL DRYING TIME.

MODEL: \\MODELMANETS
 FILE: \\manets\csm\work\spw\dekalb\calderon\10731183\0366M22-int-500_Schedule_Maps.dgn

** D3 BRIDGE DECK SEALING FY 2022
 * DEKALB, KENDALL, GRUNDY, & LASALLE

USER NAME = calderon DESIGNED - DRAWN - PLOT SCALE = 100,0000 ' / in. CHECKED - DATE -	REVISED - REVISED - REVISED - REVISED -	STATE OF ILLINOIS DEPARTMENT OF TRANSPORTATION	CONCRETE SEALER SCHEDULE DEKALB COUNTY	F.A. RTE. SECTION COUNTY TOTAL SHEETS SHEET NO.
PLOT DATE = 10/20/2021			SCALE: SHEET OF SHEETS STA. TO STA.	** * 13 4 CONTRACT NO. 66M22 ILLINOIS FED. AID PROJECT

DEKALB COUNTY



MODEL: \\MODELS\MAR15
 FILE: \\MAR15 - C:\p\work\shabona\calderon\0193183\0366M22-INT-500_Schedule_Map.dwg

** D3 BRIDGE DECK SEALING FY 2022
 * DEKALB, KENDALL, GRUNDY, & LASALLE

USER NAME = calderon	DESIGNED -	REVISED -	STATE OF ILLINOIS DEPARTMENT OF TRANSPORTATION				LOCATION MAP DEKALB COUNTY				F.A. RTE.	SECTION	COUNTY	TOTAL SHEETS	SHEET NO.	
PLOT SCALE = 100,0000' / in.	DRAWN -	REVISED -									VAR	**	-	13	5	
PLOT DATE = 10/20/2021	CHECKED -	REVISED -					CONTRACT NO. 66M22									
	DATE -	REVISED -					SCALE:	SHEET	OF	SHEETS	STA.	TO	STA.	ILLINOIS FED. AID PROJECT		

CONCRETE SEALER SCHEDULE - KENDALL COUNTY

STRUCTURE NUMBER	FACILITY CARRIED	APPROXIMATE LOCATION	FEATURE CROSSED	DECK WIDTH	PARAPET SURFACE	RAISED MEDIAN SURFACE	DECK LENGTH	SEAL AREA	TRAFFIC CONTROL AND PROTECTION STANDARD	SEE NOTES
				FEET	FEET	FEET	FEET	SQ FT		
KENDALL COUNTY										
NON-INTERSTATE STRUCTURES = 13										
047-0014	US 52	1.09 MI W ILL 47	LISBON CREEK	40			29.9	1,196	701201	
047-0050	US 34	US 34 & FOX RIVER	FOX RIVER	54	7.4	2.8	343	22,021	701601	
047-0051	US 34	0.02 MI E OF PLANO	BIG ROCK CREEK	56	6.8	3.1	162.1	10,682	701606	*
047-0052	US 52	9 MI W OF IL 47	ROODS CREEK	32	7.4		80.3	3,164	701201	
047-0054	US 34	E LIMITS OF OSWEGO	WAUBANSEE CREEK	55.1	7.4		102.5	6,406	701606	
047-0055	US 34	0.5 MI E OF OSWEGO	WAUBANSEE CREEK	66.4	7.4		66.5	4,908	701606	
047-0056	ILL 71	.5MI SW NEWARK	ROADS CR	40	7.4		72.2	3,422	701201	
047-0058	ILL 126	3.12 MI E IL 71	E. BRANCH MORGAN CRK	35.4	7.4		32.3	1,382	701201	
047-0059	ILL 71	2.20MI E OF ILL 126	MORGAN CREEK	39.3	7.4		88.5	4,133	701201	
047-0060	US 52	6.5 MI E OF ILL 47	E BR AUX SABLE CR	31.5	7.4		146.7	5,707	701201	
047-0061	US 34	1.1 MI E DEKALB CO.	LITTLE ROCK CREEK	56	7.6		142	9,031	701201	
047-0062	IL 25	IL 25 & WAUBANSEE CR	WAUBANSEE CREEK	44	4.6		106	5,152	701501	
047-0102	US 34	0.51 MI W OF ILL 47	BLACKBERRY CREEK	67	7.4		146.7	10,914	701602	
NON-INTERSTATE STRUCTURES SUB-TOTAL								88,118		
KENDALL COUNTY TOTALS								88,118		

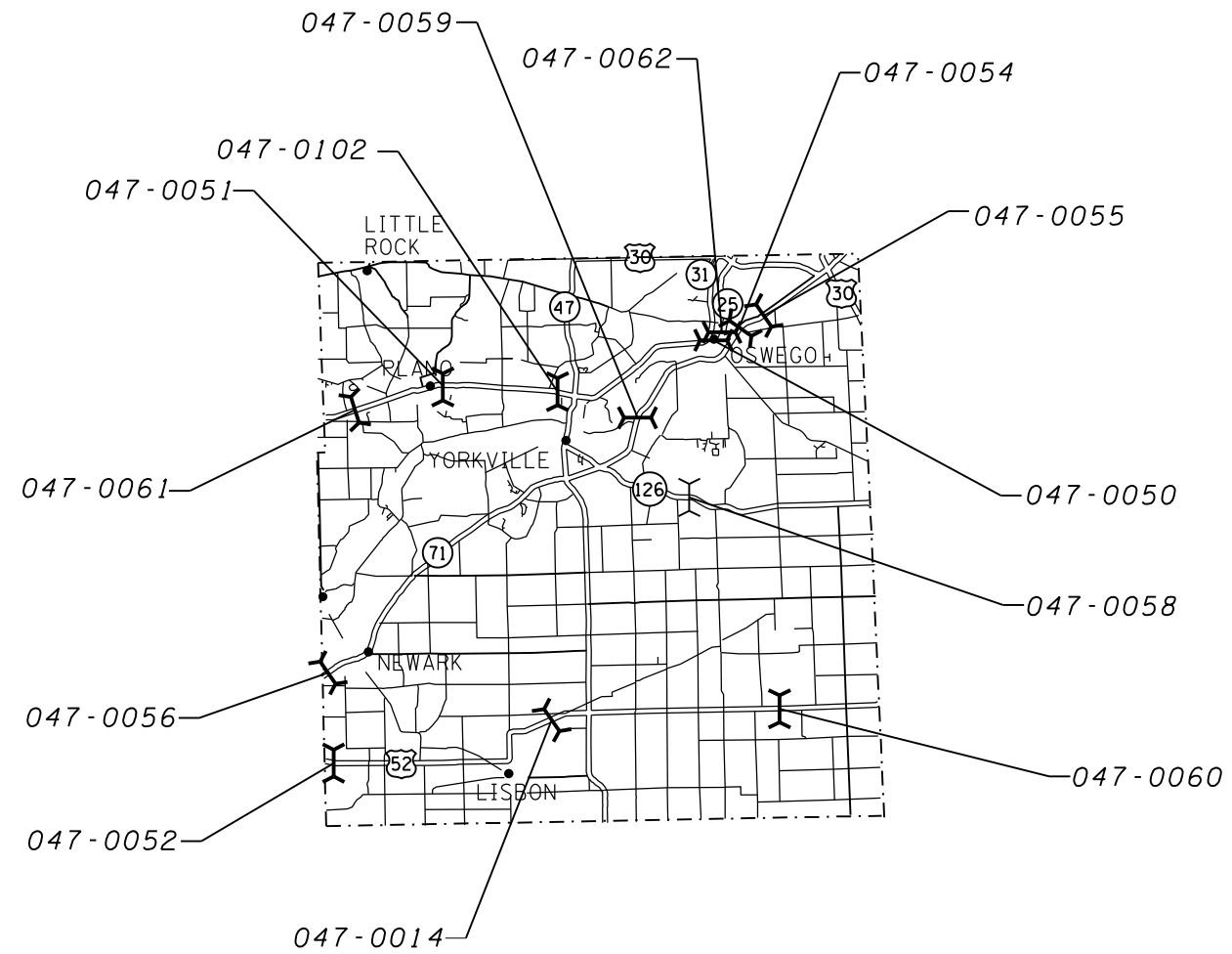
NOTE: *STRUCTURE HAS EXIST PCC OVERLAY WHICH WILL REQUIRE ADDITIONAL DRYING TIME.

MODEL: \\MODEL\MAR\F5
 FILE: \\MAR\F5\work\spw\calderon\0475183\0366M22-INT-500_Schedule_Maps.dgn

** D3 BRIDGE DECK SEALING FY 2022
 * DEKALB, KENDALL, GRUNDY, & LASALLE

USER NAME = calderon DESIGNED - DRAWN - PLOT SCALE = 100,0000' / in. CHECKED - DATE -	REVISED - REVISED - REVISED - REVISED -	STATE OF ILLINOIS DEPARTMENT OF TRANSPORTATION	CONCRETE SEALER SCHEDULE KENDALL COUNTY	F.A. RTE. SECTION COUNTY TOTAL SHEETS SHEET NO.
PLOT DATE = 10/20/2021 DATE -			SCALE: SHEET OF SHEETS STA. TO STA.	** * * 13 6 CONTRACT NO. 66M22 ILLINOIS FED. AID PROJECT

KENDALL COUNTY



MODEL: \\MODELS\MAR15
 FILE: \\MAR15 - 66M22 - 66M22\work\bridge\calderoni\047\183\0366M22-ah-500_Schedule_Map.dwg

** D3 BRIDGE DECK SEALING FY 2022
 * DEKALB, KENDALL, GRUNDY, & LASALLE

USER NAME = calderoni PLOT SCALE = 100,0000' / in. PLOT DATE = 10/20/2021	DESIGNED - DRAWN - CHECKED - DATE -	REVISED - REVISED - REVISED - REVISED -	STATE OF ILLINOIS DEPARTMENT OF TRANSPORTATION	LOCATION MAP KENDALL COUNTY	F.A. RTE. SECTION COUNTY TOTAL SHEETS SHEET NO. VAR ** * 13 7 SCALE: SHEET OF SHEETS STA. TO STA.	CONTRACT NO. 66M22 ILLINOIS FED. AID PROJECT
---	--	--	---	--------------------------------	---	---

CONCRETE SEALER SCHEDULE - GRUNDY COUNTY

STRUCTURE NUMBER	FACILITY CARRIED	APPROXIMATE LOCATION	FEATURE CROSSED	DECK WIDTH	PARAPET SURFACE	RAISED MEDIAN SURFACE	DECK LENGTH	SEAL AREA	TRAFFIC CONTROL AND PROTECTION STANDARD	SEE NOTES
				FEET	FEET	FEET	FEET	SQ FT		

GRUNDY COUNTY

INTERSTATE STRUCTURES = 11

032-0005	I-55 NORTHBOUND	4.1 MILES SOUTH	MAZON RIVER	39	7.4		233.7	10,844	701406	
032-0006	I-55 SOUTHBOUND	4.1 MI S OF REED RD	AT TR 125	39	7.4		233.7	10,844	701406	
032-0008	I-55 SOUTHBOUND	3.2 MI S OF REED RD	UNION PACIFIC RR	39	7.4		243.3	11,289	701406	
032-0082	I-55 SOUTHBOUND	1 MI E OF IL 47	GOOSEBERRY CREEK	38.8	8.8		92	4,379	701406	*
032-0083	I-55 NORTHBOUND	1 MI E OF IL 47	GOOSEBERRY CREEK	38.8	8.8		92	4,379	701406	*
032-0100	I-80 (EB & WB)	MINOOKA INTERCHANGE	FAS285/CH5/RIDGE RD	118.2	7.4	7.7	165	21,995	701406, 701411 WB, 701411 EB	
032-0101	I-80 (EB & WB)	4.63 MI E OF ILL 47	WALLEY RUN CR	118.2	7.4	7.7	86.9	11,584	701406	
032-0102	I-80 (EB & WB)	7.73 MI E OF ILL 47	AUX SABLE CRK	118.2	7.4	7.7	177.2	23,621	701406	
032-0104	I-80 (EB & WB)	3.93 MI E OF ILL 47	COLLINS RUN CREEK	121.7	7.4	7.7	104.7	14,323	701406	
032-0117	SE I-80 RAMP	SE QUAD BRISBIN RD INTERCHANGE	COLLINS RUN	26.9	7.6		112	3,864	701456	
032-0118	NE I-80 RAMP	NE QUAD BRISBIN RD INTERCHANGE	COLLINS RUN	26	7.6		103.5	3,478	701456	

INTERSTATE STRUCTURES SUB-TOTAL 120,598

GRUNDY COUNTY

NON-INTERSTATE STRUCTURES = 23

032-0053	COUNTY LINE RD TR 4	9.12 MI W ILL 47	FAI 80	24	1.7		201.3	5,173	701201	
032-0064	PIONEER RD TR 78	4.20 MI W OF ILL 47	FAI 80	24	1.7		190	4,883	701201	
032-0065	WABENA ST-MINOOKA	0.5 M E MINOOKA INT	I-80	24	1.6		200	5,120	701501	
032-0090	FAS 272/BRACEVILLE RD	2.5 MI S OF REED RD	I-55	30	7.4		221	8,265	701201	
032-0091	FAS 299/REED RD	0.1 MI S OF WILL CO LN	I-55	57	7.4	5.4	165.2	11,531	701201	
032-0092	TR 182	4.8 MI S OF REED RD	I-55	30	7.4		224.1	8,381	701201	
032-0093	FAS 292/GARDNER RD	GARDNER RD INTERCHANGE	I 55	57	7.4	5.4	165.6	11,559	701201	
032-0094	ILL 47	7.2 MI N OF I-55	MURRAY CREEK	40	7.4		109.6	5,195	701201	
032-0095	ILL 47	INTER I80 & ILL47	I 80	84	4.3	1+(3.5 to 15.5)	254	22,682	701601	
032-0096	ILL 53	S EDGE OF GARDNER	UNION PACIFIC RR	38	7.4		239.8	11,127	701201	
032-0098	ILL 113	3.1 MI E OF ILL 47	MAZON RIVER	35.4	7.4		254.3	10,884	701201	
032-0099	IL 47 FAP 326	APPR.1.23MI S /US 6	IL RIV. & I & M CANAL	60.7	7	5	1730	118,851	701601	
032-0107	US 6 FAU 5952	2.49 MI W OF IL 47	NETTLE CREEK	74	7		147.4	11,939	701201	
032-0108	US 6	WEST OF IL 47	E FORK NETTLE CREEK	67	1.5		88.5	6,062	701501	
032-0112	ILL 47	9.78 MI S OF I-80 @ MAZON	JOHNNY RUN	36	7.6		205.9	8,977	701201	
032-0113	ASHLEY RD/FAU 5974	1.24 MI E OF IL 47	I-80	32	7		251	9,789	701201	
032-0114	FAP 623 (AT OR 623)	SENECA JUNCTION	I-80 EB & WB	62	7		205.5	14,180	701201	
032-0115	FAU 401/BRISBIN RD	3.72 MI E OF ILL 47	I-80	56	7.6	7.5	247.4	17,590	701201	
032-0116	ILL 47	6.1 MI N OF I-55	W FORK MAZON RIVER	40	7.6		140	6,664	701201	
032-0119	MINOOKA RD FAU 400	MINOOKA ROAD	I-80	56	6.8		385.4	24,203	701201	
032-0122	ILL 47	2.3 MI N OF I-80	SARATOGA CREEK	80	7.6	29	103.1	12,021	701601	
032-0123	ILL 47	3.5 MI N OF I-80	VALLEY RUN	80	4.6	29	111.2	12,632	701601	
032-0124	LISBON RD FAU 5966	0.7 MI W OF IL 47	I-80	30	11.2		210.5	8,673	701201	

NON-INTERSTATE STRUCTURES SUB-TOTAL 356,383

GRUNDY COUNTY TOTALS 476,981

NOTE: *STRUCTURE HAS EXIST PCC OVERLAY WHICH WILL REQUIRE ADDITIONAL DRYING TIME.

**** ADDITIONAL DRYING TIMES EXPECTED WHEN DECK SEALING AT NIGHT**

MODEL: \\MODELMAR\F5
FILE: \\marf5\csm\work\pavement\calderon\032\032-0113\032-0113-000_Schedule_Mar2021.dwg

** D3 BRIDGE DECK SEALING FY 2022
* DEKALB, KENDALL, GRUNDY, & LASALLE

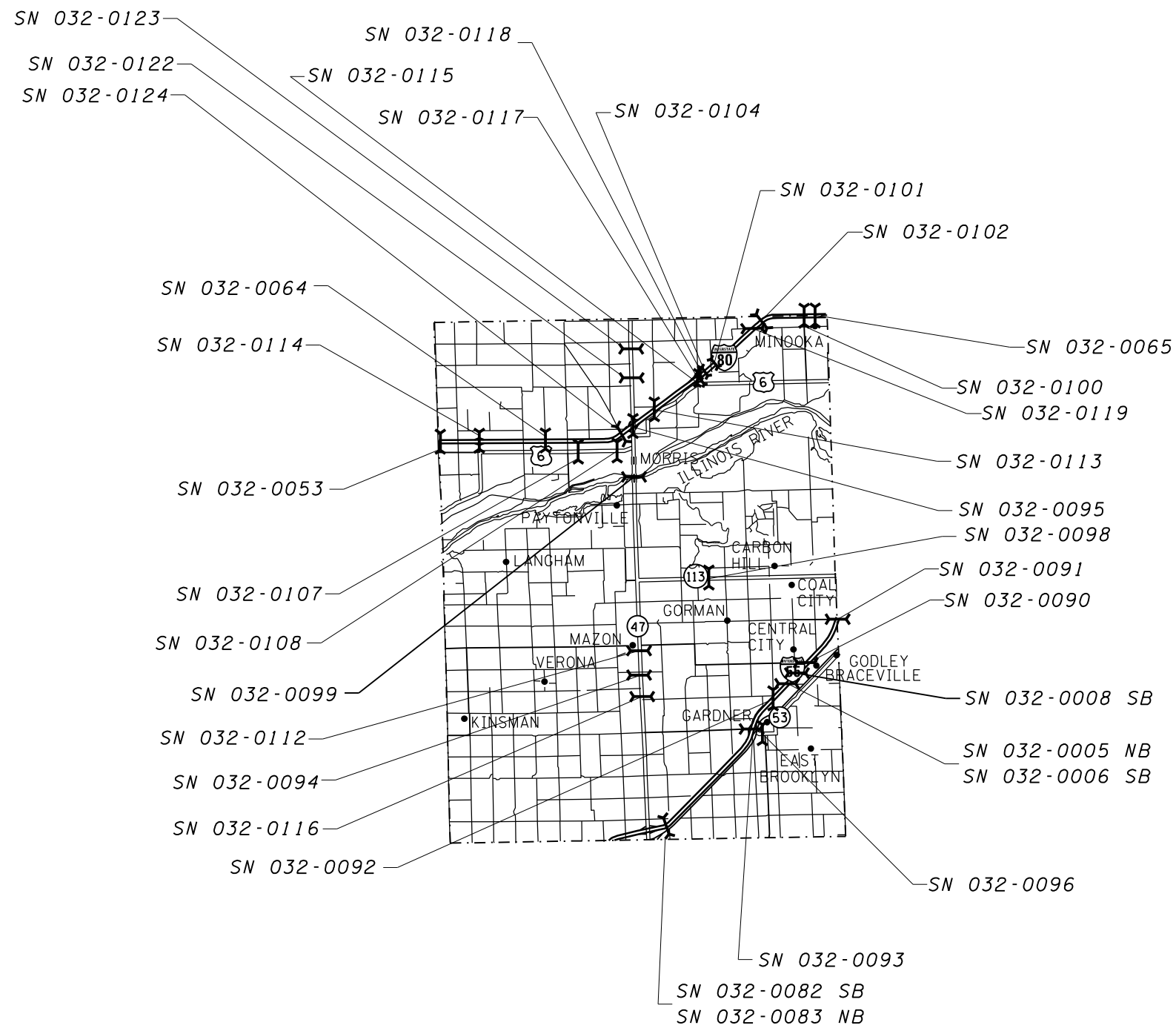
USER NAME = calderon	DESIGNED -	REVISED -
	DRAWN -	REVISED -
PLOT SCALE = 100,0000' / in.	CHECKED -	REVISED -
PLOT DATE = 10/20/2021	DATE -	REVISED -

**STATE OF ILLINOIS
DEPARTMENT OF TRANSPORTATION**

**CONCRETE SEALER SCHEDULE
GRUNDY COUNTY**

SCALE: SHEET OF SHEETS STA. TO STA.

F.A. RTE.	SECTION	COUNTY	TOTAL SHEETS	SHEET NO.
VAR	**	*	13	8
			CONTRACT NO. 66M22	
		ILLINOIS	FED. AID PROJECT	



GRUNDY COUNTY

MODEL: \\MODELS\MAR15
 FILE: MAR15 - CONR - WORKSPACE\calderoni\032\183\0366M22-INT-500_Schedule_Map.dwg

** D3 BRIDGE DECK SEALING FY 2022
 * DEKALB, KENDALL, GRUNDY, & LASALLE

USER NAME = calderoni PLOT SCALE = 100,0000' / in. PLOT DATE = 10/20/2021	DESIGNED - DRAWN - CHECKED - DATE -	REVISED - REVISED - REVISED - REVISED -	STATE OF ILLINOIS DEPARTMENT OF TRANSPORTATION	CONCRETE SEALER SCHEDULE GRUNDY COUNTY	F.A. RTE. SECTION COUNTY TOTAL SHEETS SHEET NO. VAR ** * 13 9
SCALE: SHEET OF SHEETS STA. TO STA.				CONTRACT NO. 66M22 ILLINOIS FED. AID PROJECT	

CONCRETE SEALER SCHEDULE - LASALLE COUNTY												
STRUCTURE NUMBER	FACILITY CARRIED	APPROXIMATE LOCATION	FEATURE CROSSED	DECK WIDTH	PARAPET SURFACE FACE & TOP	PARAPET SURFACE BACK	MEDIAN SURFACE FACE & TOP	MEDIAN SURFACE BACK	DECK LENGTH	SEAL AREA	TRAFFIC CONTROL AND PROTECTION STANDARD	SEE NOTES
				FEET	FEET	FEET	FEET	FEET	FEET	SQ FT		
LASALLE COUNTY INTERSTATE STRUCTURES = 1												
050-0191	I-39, US 51	2.8 MI S OF I-80	ILL RIVER/ILL 351/BO RR	80	7.4		7.7		7155	680,441	701406, 701411 SB	*
						5.66			7155	40,497		
								5.66	1092	6,181		
INTERSTATE STRUCTURES SUB-TOTAL										727,119		
LASALLE COUNTY TOTALS										727,119		

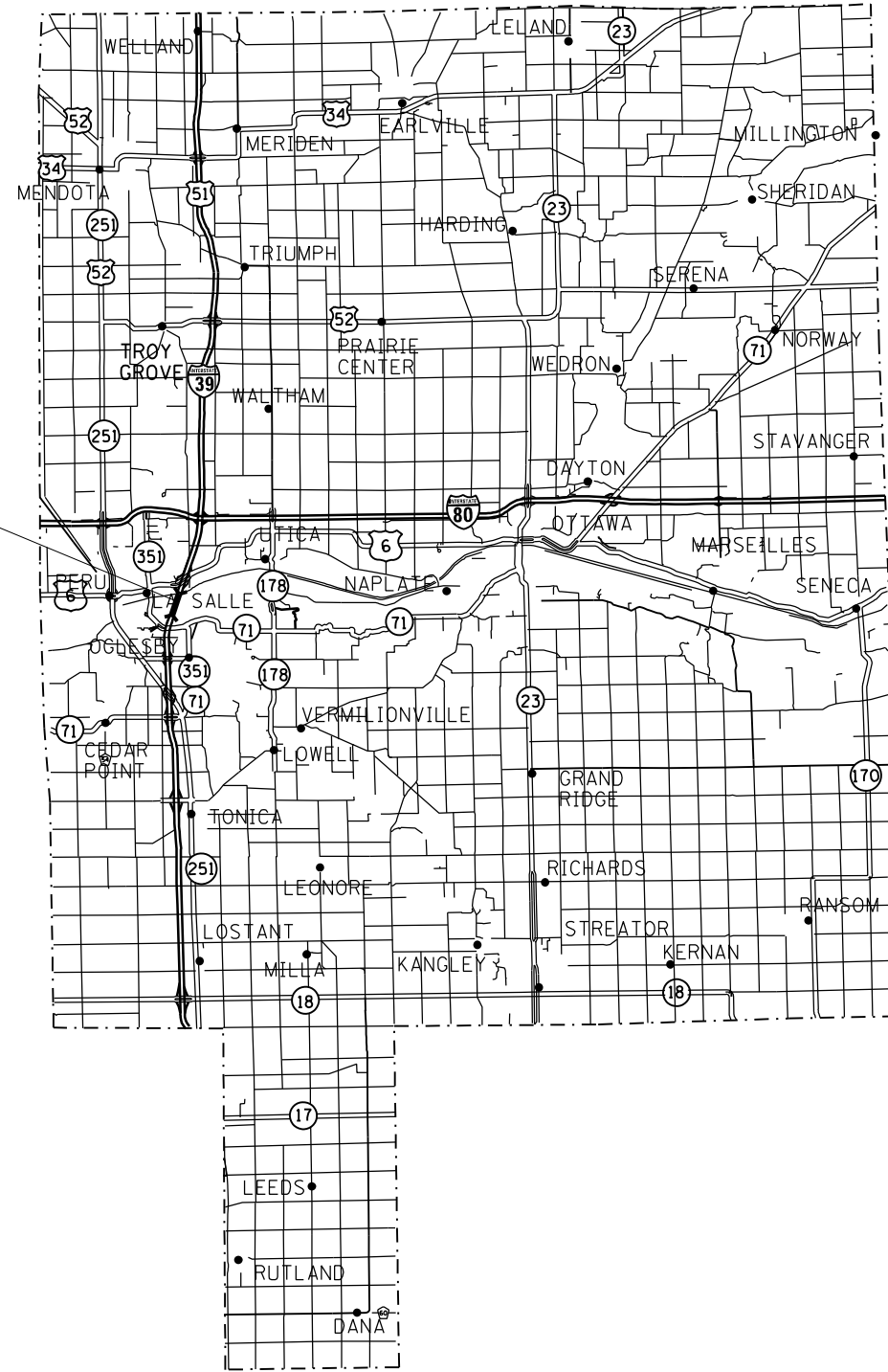
NOTE: *SEE PLAN DETAILS & SPECIAL PROVISIONS FOR SEALING LOCATIONS

MODEL: \\MODELS\MAR\F5
 FILE: \\MAR\F5\work\66622\calderon\60753183\0366M22-INT-500_Schedule_Maps.dwg

** D3 BRIDGE DECK SEALING FY 2022
 * DEKALB, KENDALL, GRUNDY, & LASALLE

USER NAME = calderonl	DESIGNED -	REVISED -	STATE OF ILLINOIS DEPARTMENT OF TRANSPORTATION	CONCRETE SEALER SCHEDULE ABE LINCOLN BRIDGE - LASALLE COUNTY	F.A. RTE.	SECTION	COUNTY	TOTAL SHEETS	SHEET NO.	
PLOT SCALE = 100,0000 ' / in.	DRAWN -	REVISED -			VAR	**	*	13	10	
PLOT DATE = 10/20/2021	CHECKED -	REVISED -			CONTRACT NO. 66M22					
	DATE -	REVISED -			SCALE:	SHEET	OF	SHEETS	STA.	TO STA.

SN 050-0191



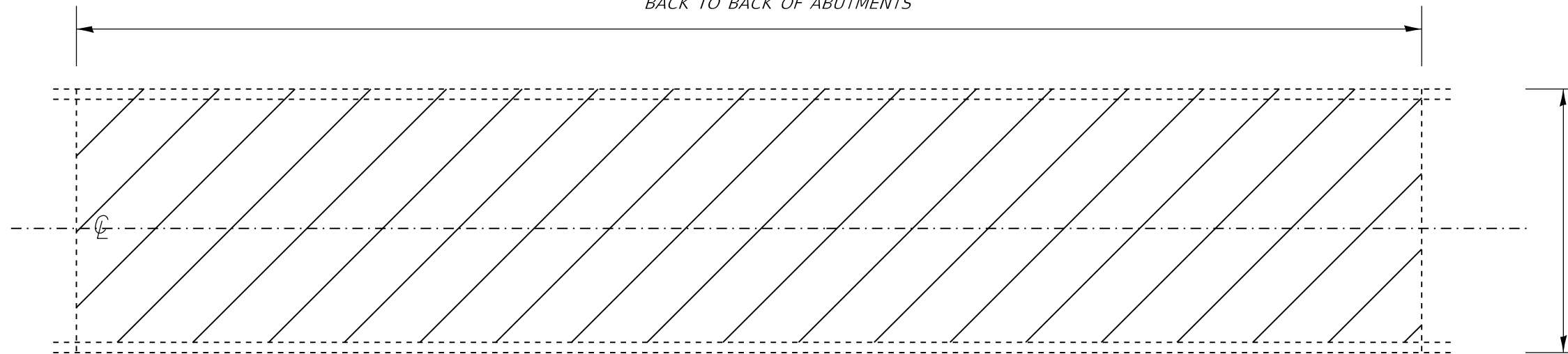
LASALLE COUNTY

MODEL: \\MODELS\MAR15
 FILE: \\MAR15 - C:\p\work\p\calderon\60735183\0366M22-ah-500_Schedule_Maps.dwg

** D3 BRIDGE DECK SEALING FY 2022
 ** DEKALB, KENDALL, GRUNDY, & LASALLE

USER NAME = calderon PLOT SCALE = 100,0000' / in. PLOT DATE = 10/20/2021	DESIGNED - DRAWN - CHECKED - DATE -	REVISED - REVISED - REVISED - REVISED -	STATE OF ILLINOIS DEPARTMENT OF TRANSPORTATION	CONCRETE SEALER SCHEDULE ABE LINCOLN BRIDGE - LASALLE COUNTY	F.A. RTE. SECTION COUNTY TOTAL SHEETS SHEET NO. VAR ** - 13 11 CONTRACT NO. 66M22 ILLINOIS FED. AID PROJECT
SCALE: SHEET OF SHEETS STA. TO STA.					

LIMITS OF BRIDGE DECK SEALING
END TO END OF DECK
BACK TO BACK OF ABUTMENTS

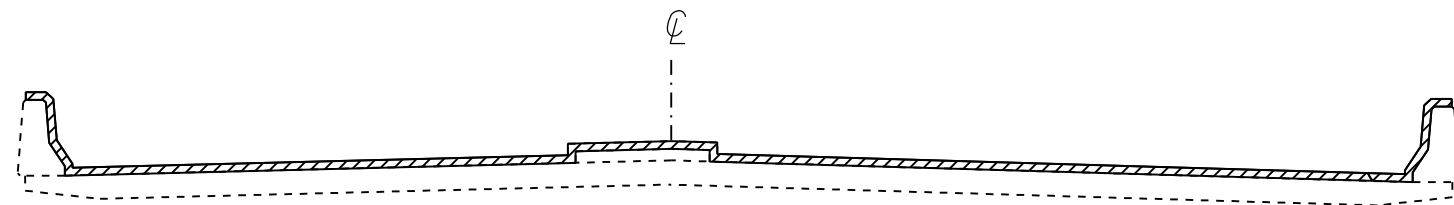


PLAN VIEW

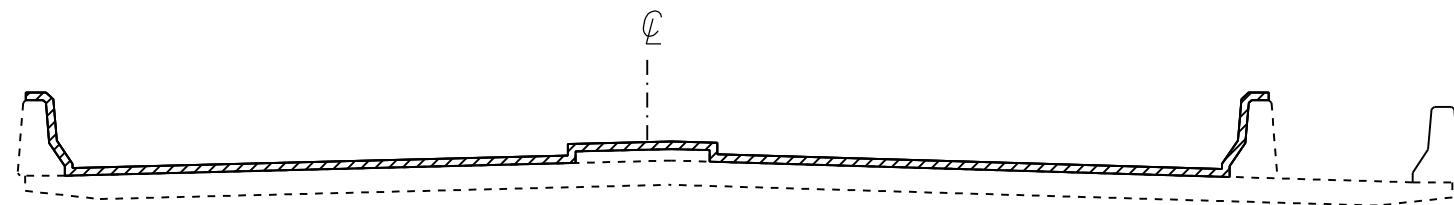
NOTE: BRIDGE APPROACH PAVEMENT SHALL NOT BE SEALED.

EXISTING PAVEMENT MARKINGS AND RAISED REFLECTIVE PAVEMENT MARKERS SHALL BE TEMPORARILY COVERED PRIOR TO APPLICATION OF THE DECK SURFACE TREATMENT TO PREVENT THE MATERIAL FROM BEING APPLIED TO THE MARKINGS AND TO PROTECT THE REFLECTIVE PROPERTIES OF THE MARKINGS. THE TEMPORARY COVERING MATERIAL USED SHALL BE SUCH THAT IT WILL NOT AFFECT THE MARKING'S REFLECTIVITY WHEN REMOVED AFTER APPLICATION OF THE DECK SURFACE TREATMENT AND PRIOR TO OPENING TO TRAFFIC. COST INCLUDED WITH CONCRETE SEALER.

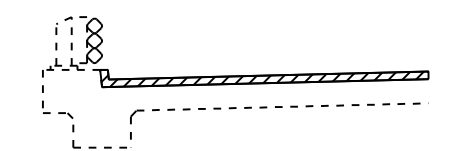
EXISTING EXPANSION JOINTS SHALL BE TEMPORARILY COVERED, PRIOR TO APPLICATION OF THE DECK SURFACE TREATMENT, TO PREVENT THE MATERIAL FROM BEING APPLIED TO THE JOINTS. THE TEMPORARY COVERING SHALL BE REMOVED AFTER THE APPLICATION OF THE DECK SURFACE TREATMENT AND PRIOR TO OPENING TO TRAFFIC. COST IS INCLUDED WITH CONCRETE SEALER.



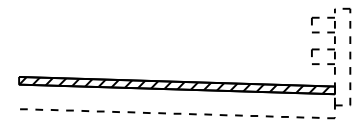
SECTION WITH PARAPET AND MEDIAN



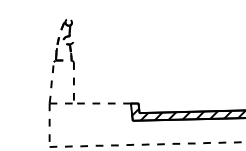
SECTION WITH PARAPET AND MEDIAN & SHARED-USE PATH OR SIDEWALK (PARAPET TYPES MAY VARY)



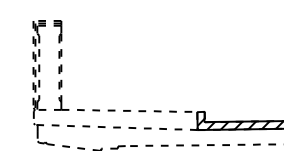
SECTION WITH CURB AND TUBULAR THRIE BEAM RETROFIT RAIL



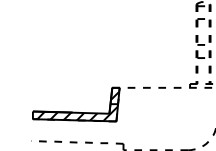
SECTION WITH BRIDGE RAIL



CONCRETE AND ALUMINUM RAILING

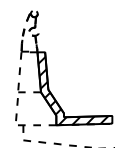


CONCRETE BRIDGE RAILING

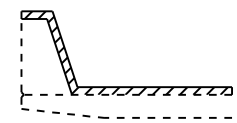
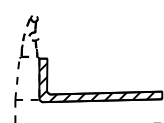


BRIDGE RAIL

VARIOUS SECTIONS WITH SIDEWALK AND/OR CONCRETE CURB



SECTION WITH CONCRETE AND ALUMINUM RAILING



CONSTANT SLOPE PARAPET

 AREA TO BE SEALED

NOT TO SCALE

MODEL: \\MODELS\MARIES
FILE: MARIES - Curb - work\subdata\calderon\101753103\0366M22-ent-dekalb.dgn

USER NAME = calderon1	DESIGNED -	REVISED -
	DRAWN -	REVISED -
PLOT SCALE = 100.0000' / in.	CHECKED -	REVISED -
PLOT DATE = 10/20/2021	DATE -	REVISED -

STATE OF ILLINOIS
DEPARTMENT OF TRANSPORTATION

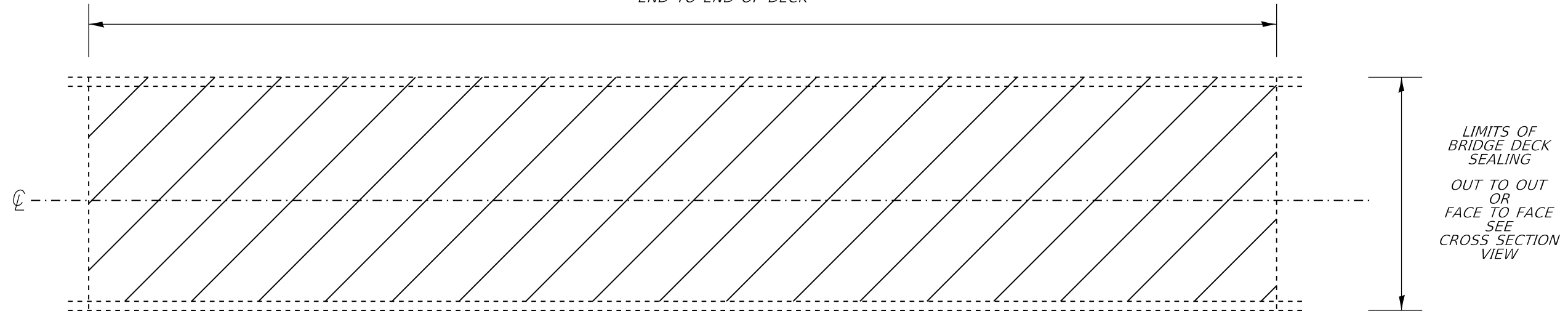
BRIDGE DECK & PARAPET
SEALING DETAILS

SCALE: SHEET OF SHEETS STA. TO STA.

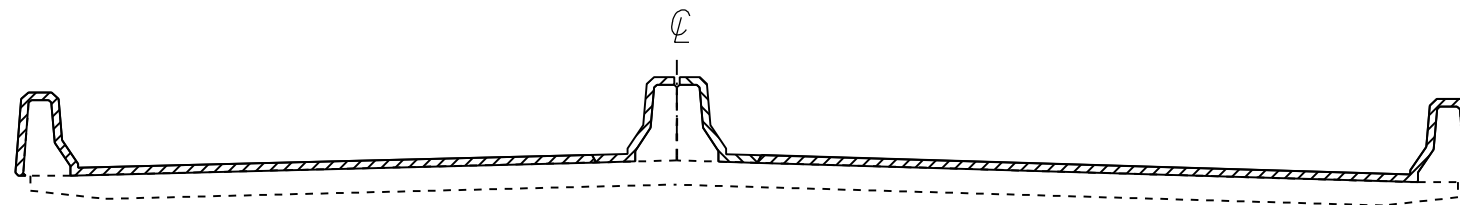
F.A. RTE.	SECTION	COUNTY	TOTAL SHEETS	SHEET NO.
	**		13	12
CONTRACT NO. 66M22			ILLINOIS FED. AID PROJECT	

** D3 BRIDGE DECK SEALING FY 2022
* DEKALB, KENDALL, GRUNDY, & LASALLE

LIMITS OF BRIDGE DECK SEALING
END TO END OF DECK



PLAN VIEW



SECTION WITH
PARAPET AND MEDIAN

NOTE: THE BACK SIDE OF THE MEDIAN PARAPETS
SHALL ALSO BE SEALED WITHIN THE FIRST
 ± 1100 FEET AT THE SOUTH END OF THE
STRUCTURE.

NOTE: BRIDGE APPROACH PAVEMENT SHALL NOT BE SEALED.

EXISTING PAVEMENT MARKINGS AND RAISED REFLECTIVE PAVEMENT MARKERS SHALL BE TEMPORARILY COVERED PRIOR TO APPLICATION OF THE DECK SURFACE TREATMENT TO PREVENT THE MATERIAL FROM BEING APPLIED TO THE MARKINGS AND TO PROTECT THE REFLECTIVE PROPERTIES OF THE MARKINGS. THE TEMPORARY COVERING MATERIAL USED SHALL BE SUCH THAT IT WILL NOT AFFECT THE MARKING'S REFLECTIVITY WHEN REMOVED AFTER APPLICATION OF THE DECK SURFACE TREATMENT AND PRIOR TO OPENING TO TRAFFIC. COST INCLUDED WITH CONCRETE SEALER.

EXISTING EXPANSION JOINTS SHALL BE TEMPORARILY COVERED, PRIOR TO APPLICATION OF THE DECK SURFACE TREATMENT, TO PREVENT THE MATERIAL FROM BEING APPLIED TO THE JOINTS. THE TEMPORARY COVERING SHALL BE REMOVED AFTER THE APPLICATION OF THE DECK SURFACE TREATMENT AND PRIOR TO OPENING TO TRAFFIC. COST IS INCLUDED WITH CONCRETE SEALER.

 AREA TO BE SEALED

FOR SN 050-0191 (ABRAHAM LINCOLN) ONLY

NOT TO SCALE

** D3 BRIDGE DECK SEALING FY 2022
* DEKALB, KENDALL, GRUNDY, & LASALLE

MODEL: \\MODELS\MAR\F5 FILE: \\MAR\F5\work\sn050\calderon\050191\03183\0366M22-ah-calderon.dgn

USER NAME = calderon PLOT SCALE = 100.0000' / in. PLOT DATE = 10/20/2021	DESIGNED -	REVISED -	STATE OF ILLINOIS DEPARTMENT OF TRANSPORTATION	BRIDGE DECK & PARAPET SEALING DETAILS				F.A. RTE.	SECTION	COUNTY	TOTAL SHEETS	SHEET NO.
	DRAWN -	REVISED -						VAR	**	*	13	13
	CHECKED -	REVISED -		SCALE: SHEET OF SHEETS STA. TO STA.				CONTRACT NO. 66M22				
	DATE -	REVISED -						ILLINOIS FED. AID PROJECT				