

STATE OF ILLINOIS  
DEPARTMENT OF TRANSPORTATION

F.A.P. RTE	SECTION	COUNTY	TOTAL SHEETS	SHEET NO.
323	D7 BRIDGE PAINTING 2021-1	MACON	4	1
		ILLINOIS	CONTRACT NO. 74A39	

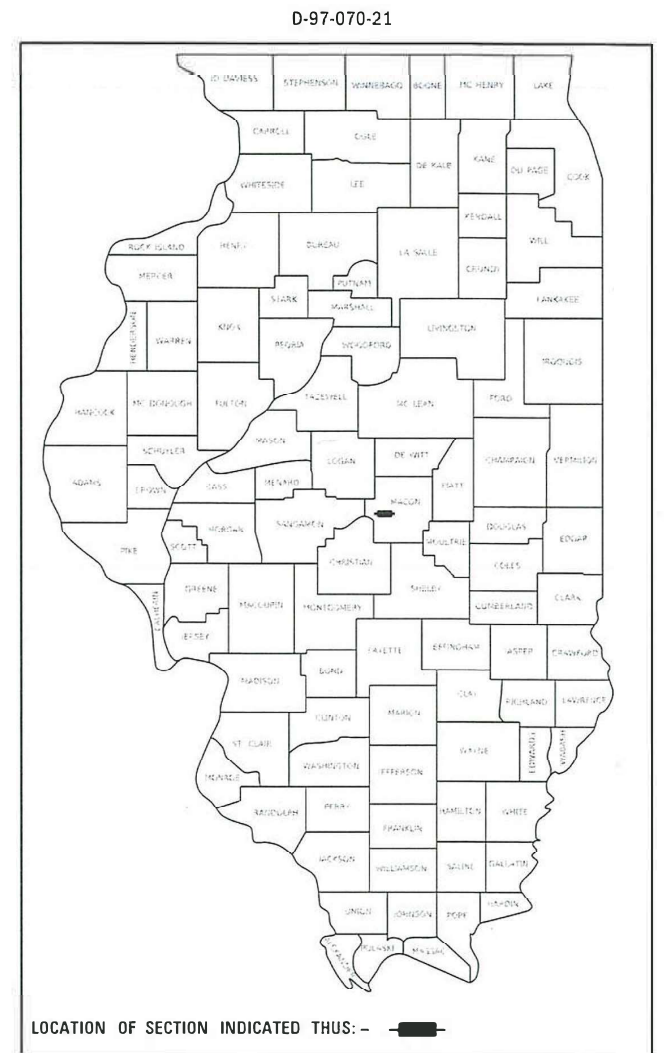
FOR INDEX OF SHEETS, SEE SHEET NO. 2

ADT = 4950 (2019)

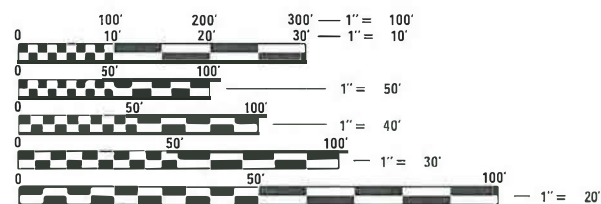
# PROPOSED HIGHWAY PLANS

F.A.P. ROUTE 323 (US 36)  
SECTION D7 BRIDGE PAINTING 2021-1  
PROJECT NHPP-GEGK(719)  
BRIDGE PAINTING  
MACON COUNTY

C-97-123-21



PROJECT LOCATION:  
SN 058-0106 (WB) &  
SN 058-0107 (EB)



FULL SIZE PLANS HAVE BEEN PREPARED USING STANDARD ENGINEERING SCALES. REDUCED SIZED PLANS WILL NOT CONFORM TO STANDARD SCALES. IN MAKING MEASUREMENTS ON REDUCED PLANS, THE ABOVE SCALES MAY BE USED.

J.U.L.I.E.  
JOINT UTILITY LOCATION INFORMATION FOR EXCAVATORS  
1-800-892-0123  
OR 811

PROJECT ENGINEER: TOM RONAN  
PROJECT MANAGER: TOM RONAN  
PHONE: (217)-342-8320  
CONTRACT NO. 74A39

STATE OF ILLINOIS  
DEPARTMENT OF TRANSPORTATION

SUBMITTED August 16, 2021  
Jeffrey P. Mynick  
REGIONAL ENGINEER

December 10, 2021  
[Signature]  
ENGINEER OF DESIGN AND ENVIRONMENT

December 10, 2021  
Stephen M. Smith  
DIRECTOR OF HIGHWAYS PROJECT IMPLEMENTATION

PRINTED BY THE AUTHORITY  
OF THE STATE OF ILLINOIS

## INDEX OF SHEETS

1	COVER SHEET
2	INDEX OF SHEETS, GENERAL NOTES & LOCATION DESCRIPTIONS
3	SUMMARY OF QUANTITIES
4	LOCATION MAP

THE FOLLOWING STANDARDS ARE A PART OF THESE PLANS AND ARE INCLUDED AFTER SHEET NO. 9:

STD NO.	DESCRIPTION
000001-08	STANDARD SYMBOLS, ABBREVIATIONS, AND PATTERNS
701101-05	OFF-ROAD OPERATIONS, MULTILANE, 15' TO 24" FROM PAVEMENT EDGE
701106-02	OFF-ROAD OPERATIONS, MULTILANE, MORE THAN 15' AWAY
701400-11	APPROACH TO LANE CLOSURE, FREEWAY/EXPRESSWAY
701401-13	LANE CLOSURE, FREEWAY/EXPRESSWAY
701402-12	LANE CLOSURE, FREEWAY/EXPRESSWAY, WITH BARRIER
701411-09	LANE CLOSURE, MULTILANE, AT ENTRANCE OR EXIT RAMP
701901-08	TRAFFIC CONTROL DEVICES
704001-08	TEMPORARY CONCRETE BARRIER
001006	DECIMAL OF AN INCH AND OF A FOOT
782006-01	GUARDRAIL AND BARRIER WALL REFLECTOR MOUNTING DETAILS

## GENERAL NOTES

THE PROPOSED PROJECT IS LOCATED AT TWO LOCATIONS ON US ROUTE 36 IN HARRISTOWN IN MACON COUNTY IN DISTRICT 7.

THE WORK INCLUDED IN THIS SECTION CONSISTS OF CLEANING AND PAINTING THE BRIDGES AS SPECIFIED IN THE PLANS AND SPECIAL PROVISIONS.

THE STRUCTURAL STEEL SHALL BE CLEANED AND PAINTED AS SPECIFIED IN THE PLANS AND THE SPECIAL PROVISIONS.

ALL DECK DRAINS SHALL BE PAINTED ACCORDING TO THE REQUIREMENTS OF PAINT SYSTEM 1-OZ/E/U. ANY DAMAGE CAUSED BY THE CONTRACTORS SHALL BE REPAIRED AT THEIR OWN EXPENSE AND NO ADDITIONAL COMPENSATION WILL BE ALLOWED.

ONLY STRUCTURAL STEEL IS TO BE PAINTED. ALL OTHER SURFACES WILL BE PROTECTED FROM BEING PAINTED. ALL PAINT AND OVERSPRAY WILL BE REMOVED AT THE CONTRACTOR'S EXPENSE.

THE SSPC QP1 AND QP2 PAINTING CONTRACTOR CERTIFICATION WILL BE REQUIRED FOR THIS PROJECT.

EXISTING STRUCTURES PLANS CAN BE FOUND ONLINE IN THE ADDITIONAL INFORMATION FOLDER.

## LOCATION DESCRIPTIONS

### LOCATION #1

BRIDGE # 1  
 ROUTE: FAP 323  
 MARKED: US 36  
 SECTION: (58-62HB-2)BR  
 STATION: 589+28.50  
 STRUCTURE NUMBER: 058-0106

TYPE OF BRIDGE: Plate Girders-4 Spans 8 Girders)  
 LOCATION: In Harristown  
 FEATURE CARRIED/SPANNED: Westbound US 36 over US 51

COLOR OF THE FINISH COAT SHALL BE GRAY, MUNSELL 5B 7/1.

Cleaning and painting of the existing structural steel shall be as specified in the special provision for "Cleaning and Painting Existing Steel Structures". All structural steel including beams, bearings and diaphragms/lateral bracing, shall be cleaned by SSPC-SP10- Near White Metal Blast Cleaning. The paint on this bridge contains lead.

The designated areas cleaned per Near White Metal Blast Cleaning - SSPC-SP10 shall be painted according to the requirements of Paint System 1 - OZ/E/U.

Three air monitors will be required at this location.

### LOCATION #2

BRIDGE # 2  
 ROUTE: FAP 323  
 MARKED: US 36  
 SECTION: (58-62HB-2)BR  
 STATION: 588+74.97  
 STRUCTURE NUMBER: 058-0107

TYPE OF BRIDGE: Plate Girders - 4 Spans (9 Girders)  
 LOCATION: In Harristown  
 FEATURE CARRIED/SPANNED: Eastbound US 36 over US 51

COLOR OF THE FINISH COAT SHALL BE GRAY, MUNSELL 5B 7/1.

Cleaning and painting of the existing structural steel shall be as specified in the special provision for "Cleaning and Painting Existing Steel Structures". All structural steel including beams, bearings and diaphragms/lateral bracing, shall be cleaned by SSPC-SP10- Near White Metal Blast Cleaning. The paint on this bridge contains lead.

The designated areas cleaned per Near White Metal Blast Cleaning - SSPC-SP10 shall be painted according to the requirements of Paint System 1 - OZ/E/U.

Three air monitors will be required at this location.

REV. - MS

MODEL: Default  
 FILE: Macos\_Plan\Ildet-pw-bentley.com\FWIDOT\Documents\DOT Offices\District 7\Projects\74A39\CADD\Drawings\CAD\Sheet074A39-18-18-gennote.dgn

USER NAME = steffemk	DESIGNED -	REVISED -
	DRAWN -	REVISED -
PLOT SCALE = 100.0000' / in.	CHECKED -	REVISED -
PLOT DATE = 8/16/2021	DATE -	REVISED -

**STATE OF ILLINOIS  
 DEPARTMENT OF TRANSPORTATION**

**INDEX OF SHEETS, GENERAL NOTES &  
 LOCATION DESCRIPTIONS**

SCALE: SHEET 1 OF 1 SHEETS STA. TO STA.

F.A.P. RTE.	SECTION	COUNTY	TOTAL SHEETS	SHEET NO.
323	D7 BRIDGE PAINTING 2021-1	MACON	4	2
			CONTRACT NO. 74A39	
ILLINOIS FE.D.AID PROJECT				

80% FED  
20% STATE

80% FED  
20% STATE

SUMMARY OF QUANTITIES			TOTAL QUANTITIES	CONSTRUCTION TYPE CODE		
CODE NO	ITEM	UNIT		0047		
67100100	MOBILIZATION	L SUM	1	1		
70100205	TRAFFIC CONTROL AND PROTECTION, STANDARD	EACH	2	2		
	701401					
70100207	TRAFFIC CONTROL AND PROTECTION, STANDARD	EACH	2	2		
	701402					
70100420	TRAFFIC CONTROL AND PROTECTION, STANDARD	EACH	3	3		
	701411					
70107025	CHANGEABLE MESSAGE SIGN	CAL DA	28	28		
70400100	TEMPORARY CONCRETE BARRIER	FOOT	400	400		
70400200	RELOCATE TEMPORARY CONCRETE BARRIER	FOOT	1200	1200		
70600250	IMPACT ATTENUATORS, TEMPORARY (NON-REDIRECTIVE), TEST LEVEL 3	EACH	1	1		
70600350	IMPACT ATTENUATORS, RELOCATE (NON-REDIRECTIVE), TEST LEVEL 3	EACH	3	3		
70400125	PINNING TEMPORARY CONCRETE BARRIER	EACH	240	240		
Z0007101	CONTAINMENT AND DISPOSAL OF LEAD PAINT	L SUM	1	1		
	CLEANING RESIDUES NO. 1					

SUMMARY OF QUANTITIES			TOTAL QUANTITIES	CONSTRUCTION TYPE CODE		
CODE NO	ITEM	UNIT		0047		
Z0007102	CONTAINMENT AND DISPOSAL OF LEAD PAINT	L SUM	1	1		
	CLEANING RESIDUES NO. 2					
Z0010501	CLEANING AND PAINTING STEEL BRIDGE NO. 1	L SUM	1	1		
Z0010502	CLEANING AND PAINTING STEEL BRIDGE NO. 2	L SUM	1	1		

REV. - MS

MODEL: Default  
 FILE: \\miller-pw-bentley.com\FW\DOT\Documents\DOT\_Offices\District\_7\Projects\74A39\CAD\Drawings\CAD\Sheets\74A39-SP-S00.dgn

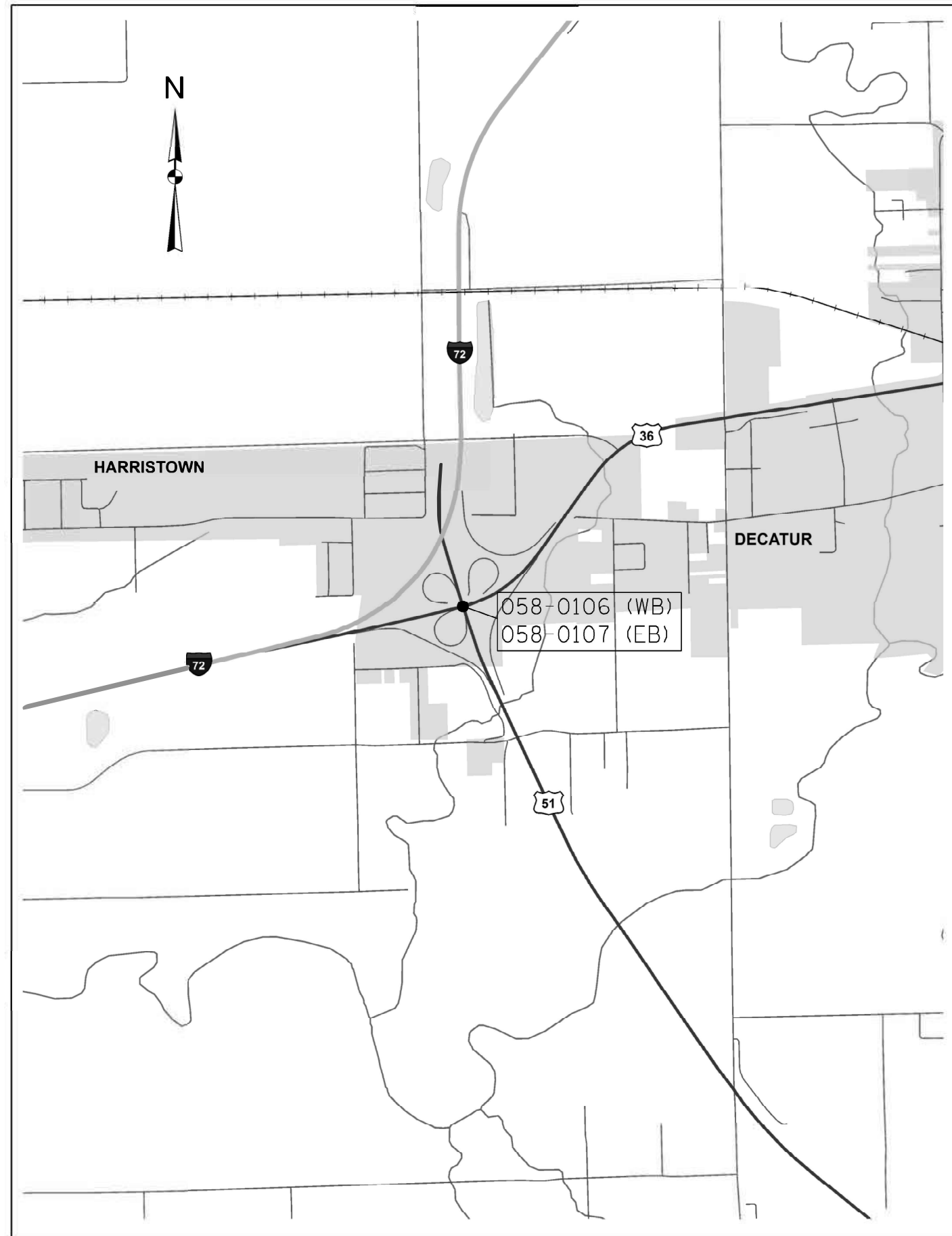
USER NAME = steffenmk	DESIGNED -	REVISED -
	DRAWN -	REVISED -
PLOT SCALE = 100.0000' / in.	CHECKED -	REVISED -
PLOT DATE = 8/16/2021	DATE -	REVISED -

**STATE OF ILLINOIS  
DEPARTMENT OF TRANSPORTATION**

**SUMMARY OF QUANTITIES**

SCALE: SHEET 1 OF 1 SHEETS STA. TO STA.

F.A.P. RTE.	SECTION	COUNTY	TOTAL SHEETS	SHEET NO.
323	D7 BRIDGE PAINTING 2021-1	MACON	4	3
ILLINOIS   FED. AID PROJECT			CONTRACT NO. 74A39	



MODEL: Default  
 PLOT DATE: 8/16/2021  
 FILE: M:\data\pwworkspace\benetecy.com\PROJECTS\74A39\CADD\DATA\CAD\sheet\74A39-sht-location\_map.dgn

REV. - MS

USER NAME = steffenmk	DESIGNED -	REVISED -
	DRAWN -	REVISED -
PLOT SCALE = 100.0000' / in.	CHECKED -	REVISED -
PLOT DATE = 8/16/2021	DATE -	REVISED -

**STATE OF ILLINOIS**  
**DEPARTMENT OF TRANSPORTATION**

**LOCATION MAP**

SCA E: SHEET 1 OF 1 SHEETS STA. TO STA.

F.A.P. RTE.	SECTION	COUNTY	TOTAL SHEETS	SHEET NO.
323	D7 BRIDGE PAINTING 2021-1	MACON	4	4
ILLINOIS FEDERAL PROJECT			CONTRACT NO. 74A39	