

LAYOUT DPA 03.06.2013
 DRAWN MWH 10.15.2013
 REVIEWED DPA 10.17.2013
 XS

FILE NAME =	USER NAME = huss00411	DESIGNED - DPA	REVISED -
D309H0038-sht-xsst018		DRAWN - MWH	REVISED -
MODEL NAME =		CHECKED - DPA	REVISED -
		DATE - 12/03/13	REVISED -

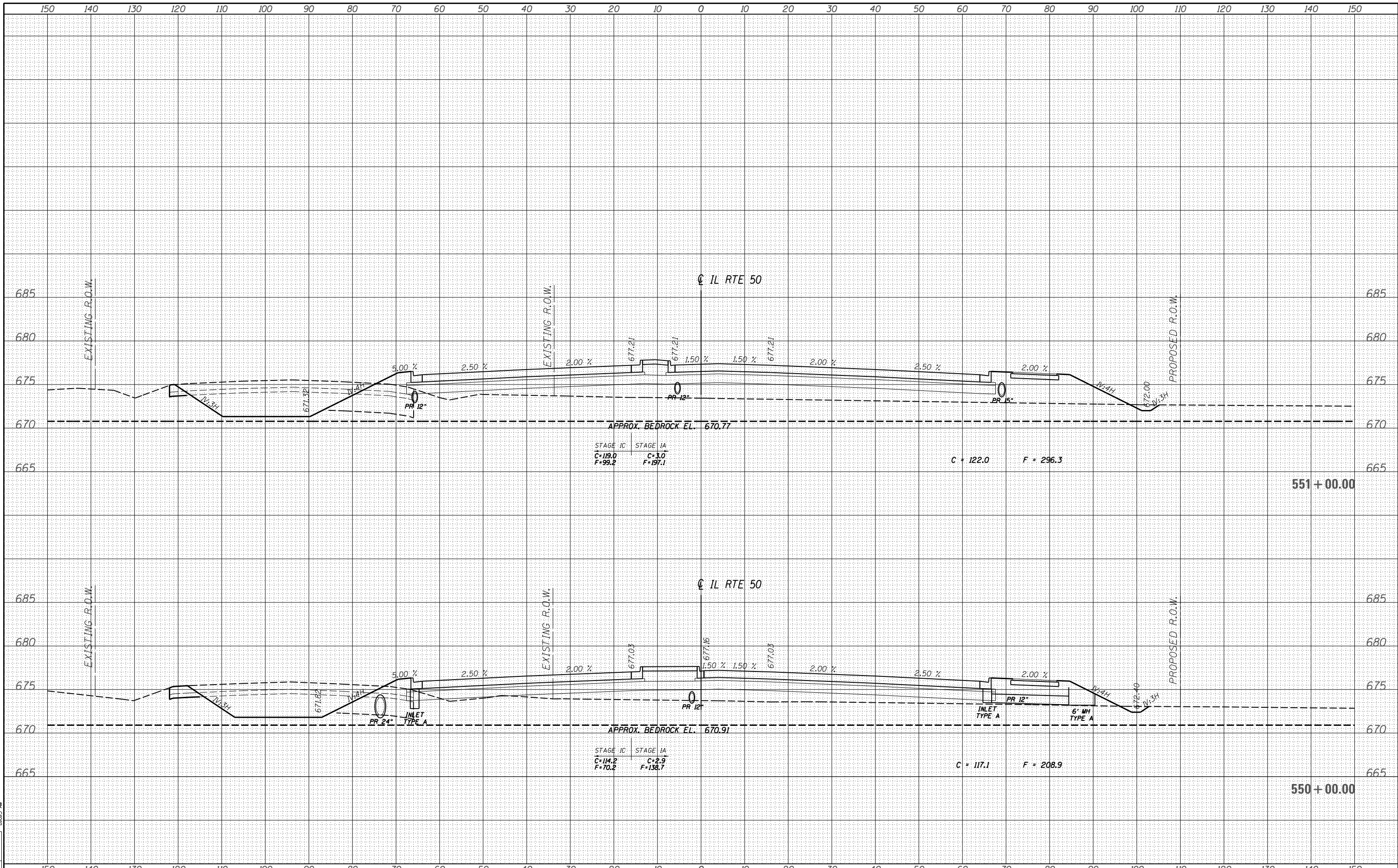
**STATE OF ILLINOIS
 DEPARTMENT OF TRANSPORTATION**

**CROSS SECTIONS - IL50
 I-57 AND 6000N RD (BOURBONNAIS PARKWAY)
 BOURBONNAIS, IL**

SCALE: SHEET OF SHEETS STA. 548+00.00 TO STA. 549+00.00

F.A.I. RTE.	SECTION	COUNTY	TOTAL SHEETS	SHEET NO.
57	(46-1)HBK-1	KANKAKEE	819	801
CONTRACT NO. 66982				

ILLINOIS FED. AID PROJECT



DPA 03.06.2013
 MWH 10.15.2013
 DPA 10.17.2013
 huss0041
 12/03/2013
 8:25 AM

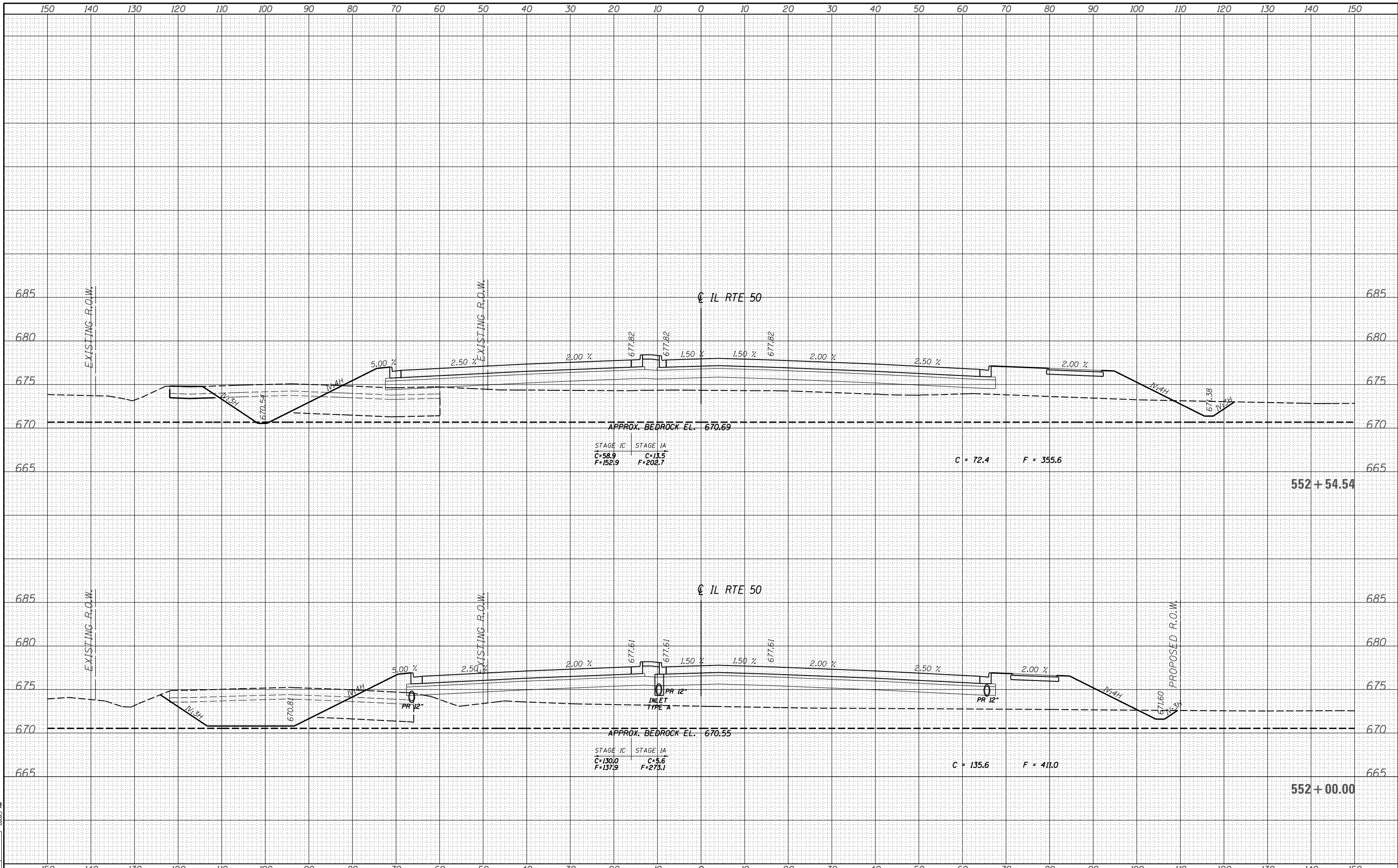
FILE NAME =
 D309H0038-sht-xsst018
 MODEL NAME =
 XS

USER NAME = huss00411
 DESIGNED - DPA
 DRAWN - MWH
 CHECKED - DPA
 PLOT DATE = 12/03/2013
 REVISIONS:
 REVISIONS -
 REVISIONS -
 REVISIONS -
 REVISIONS -

STATE OF ILLINOIS
DEPARTMENT OF TRANSPORTATION

CROSS SECTIONS - IL50
I-57 AND 6000N RD (BOURBONNAIS PARKWAY)
BOURBONNAIS, IL
 SCALE: SHEET OF SHEETS STA. 550+00.00 TO STA. 551+00.00

F.A.I. RTE.	SECTION	COUNTY	TOTAL SHEETS	SHEET NO.
57	(46-1)HBK-1	KANKAKEE	819	802
CONTRACT NO. 66982				
ILLINOIS FED. AID PROJECT				



LAYOUT	DPA	03.06.2013
DRAWN	MWH	10.15.2013
REVIEWED	DPA	10.17.2013
XS		

FILE NAME = D309H0038-sht-xsht018
 MODEL NAME = XS
 USER NAME = hussu00411

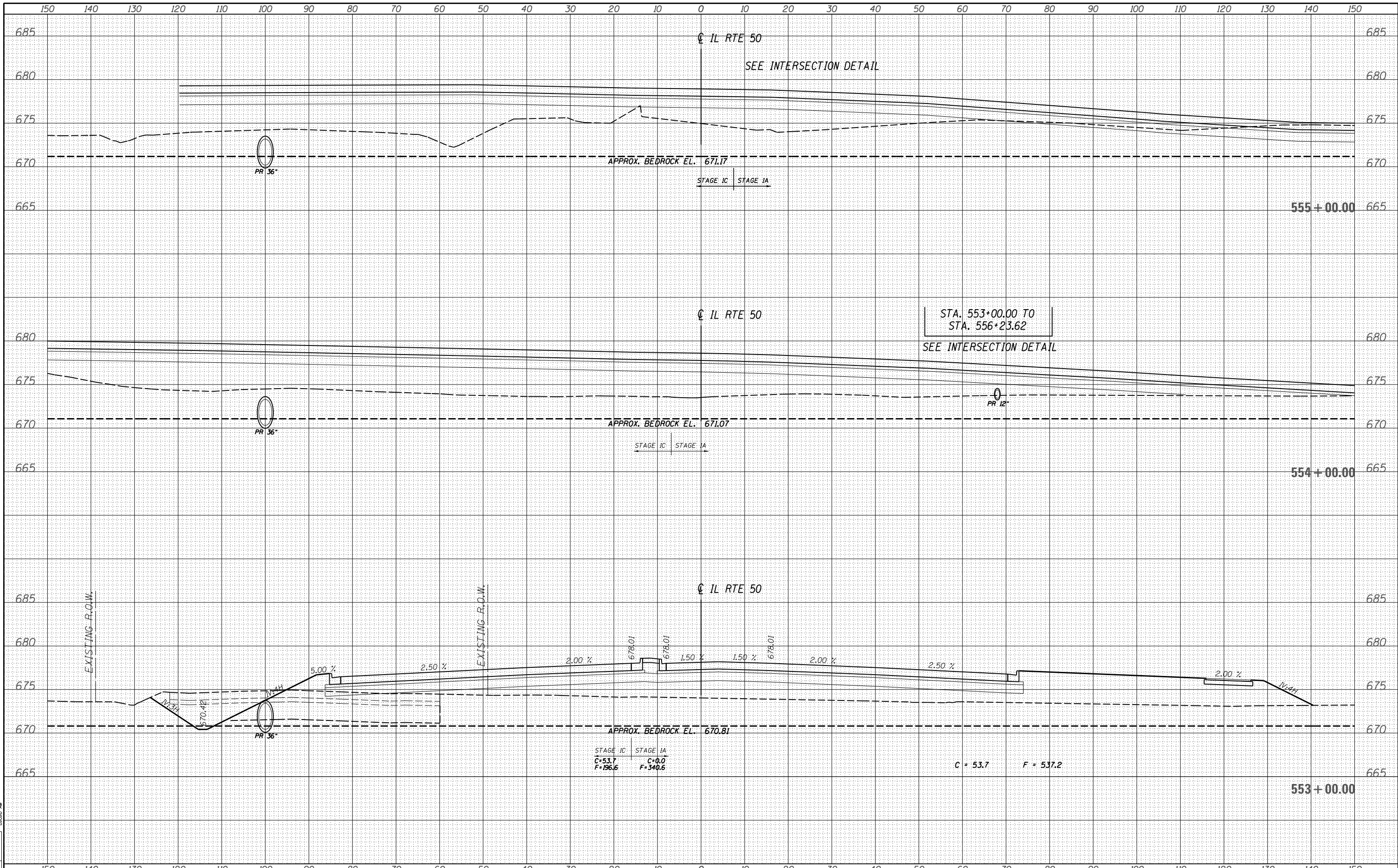
DESIGNED	-	DPA	REVISED	-
DRAWN	-	MWH	REVISED	-
CHECKED	-	DPA	REVISED	-
DATE	-	12/03/13	REVISED	-

STAGE IC	C=58.9	F=152.9
STAGE IA	C=13.5	F=202.7

STATE OF ILLINOIS
 DEPARTMENT OF TRANSPORTATION

CROSS SECTIONS - IL50
 I-57 AND 6000N RD (BOURBONNAIS PARKWAY)
 BOURBONNAIS, IL
 SCALE: SHEET OF SHEETS STA. 552+00.00 TO STA. 552+54.54

F.A.I. RTE.	SECTION	COUNTY	TOTAL SHEETS	SHEET NO.
57	(46-1)HBK-1	KANKAKEE	819	803
CONTRACT NO. 66982				
ILLINOIS FED. AID PROJECT				



DPA 03.06.2013
 DRAWN MWH 10.15.2013
 REVIEWED DPA 10.17.2013
 XS

FILE NAME =
 D309H0038-sht-xsst018
 MODEL NAME =
 XS

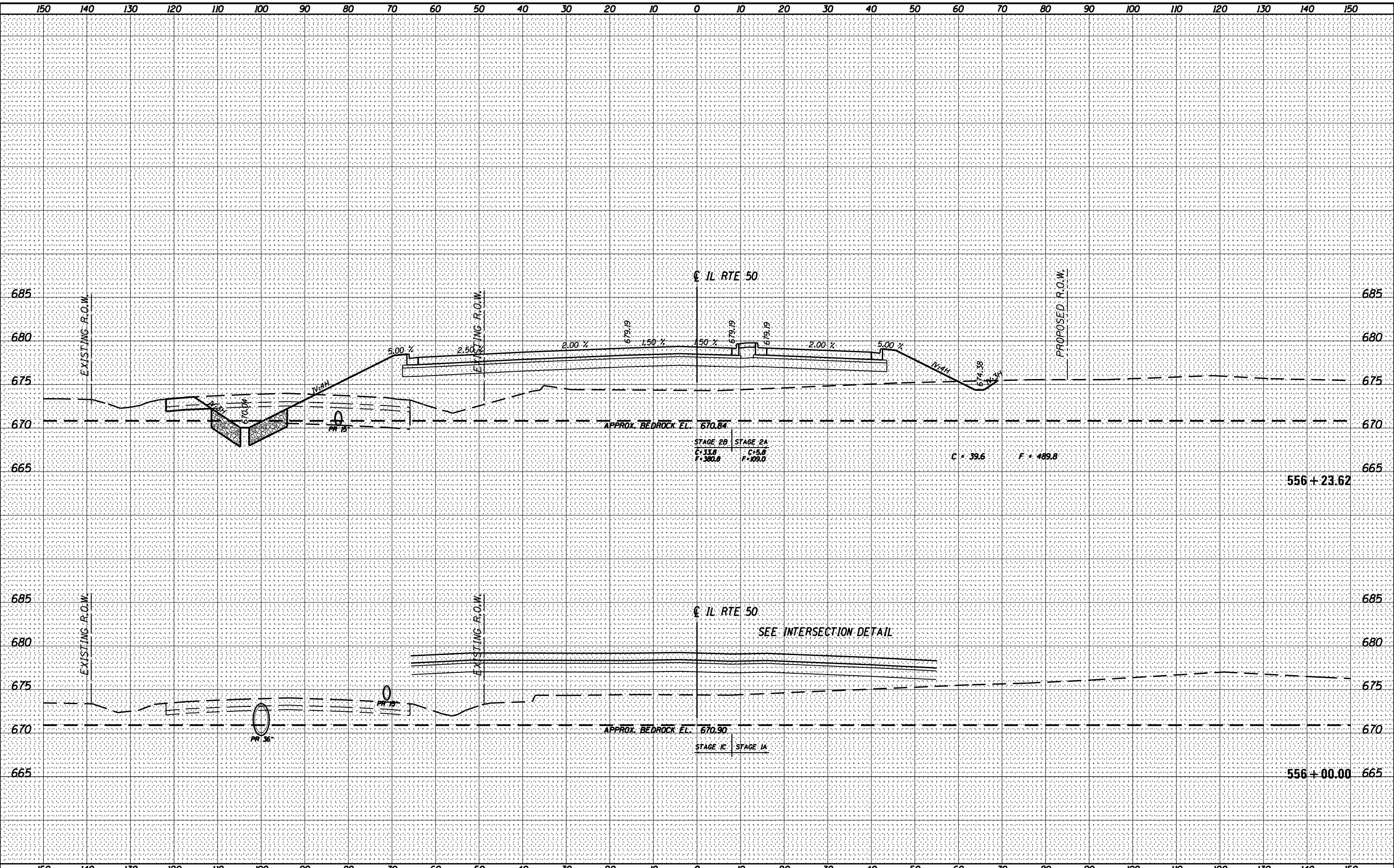
USER NAME = hussu00411
 DESIGNED - DPA
 DRAWN - MWH
 CHECKED - DPA
 PLOT DATE = 12/03/13
 DATE - 12/03/13

REVISED -
 REVISED -
 REVISED -
 REVISED -

STATE OF ILLINOIS
DEPARTMENT OF TRANSPORTATION

CROSS SECTIONS - IL50
I-57 AND 6000N RD (BOURBONNAIS PARKWAY)
BOURBONNAIS, IL
 SCALE: SHEET OF SHEETS STA. 553+00.00 TO STA. 555+00.00

F.A.I. RTE.	SECTION	COUNTY	TOTAL SHEETS	SHEET NO.
57	(46-1)HBK-1	KANKAKEE	819	804
CONTRACT NO. 66982				
ILLINOIS FED. AID PROJECT				



LAYOUT: SIGGATEX
 DRAWN: SIGGATEX
 REVIEWED: SIGGATEX
 08/07/2014
 8:52:52 PM

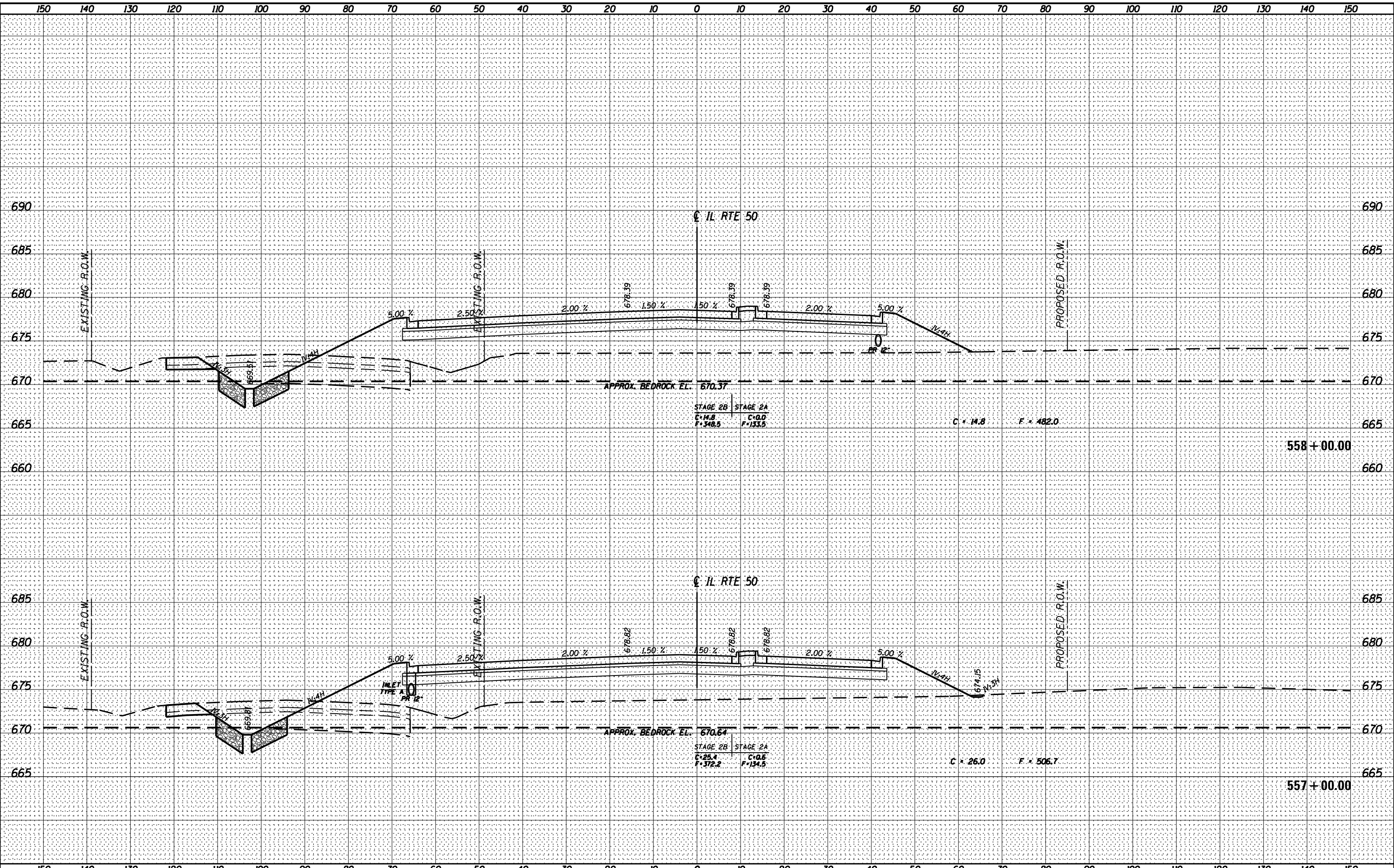
FILE NAME = D309H0038-sht-xsht018.dgn
 MODEL NAME = XS
 USER NAME = angel

DESIGNED - DPA	REVISÉ -
DRAWN - MWH	REVISÉ -
CHECKED - DPA	REVISÉ -
DATE - 12/03/13	REVISÉ -

STATE OF ILLINOIS
 DEPARTMENT OF TRANSPORTATION

CROSS SECTIONS - IL 50
 I-57 AND 6000N RD (BOURBONNAIS PARKWAY)
 BOURBONNAIS, IL
 SCALE: SHEET OF SHEETS STA. 556+00.00 TO STA. 556+23.62

F.A.I. RTE.	SECTION	COUNTY	TOTAL SHEETS	SHEET NO.
57	(46-1)HBK-1	KANKAKEE	819	805
CONTRACT NO. 66982				
ILLINOIS FED. AID PROJECT				



LAYOUT: SIGGATEX
 DRAWN: SIGGATEX
 REVIEWED: SIGGATEX
 XS

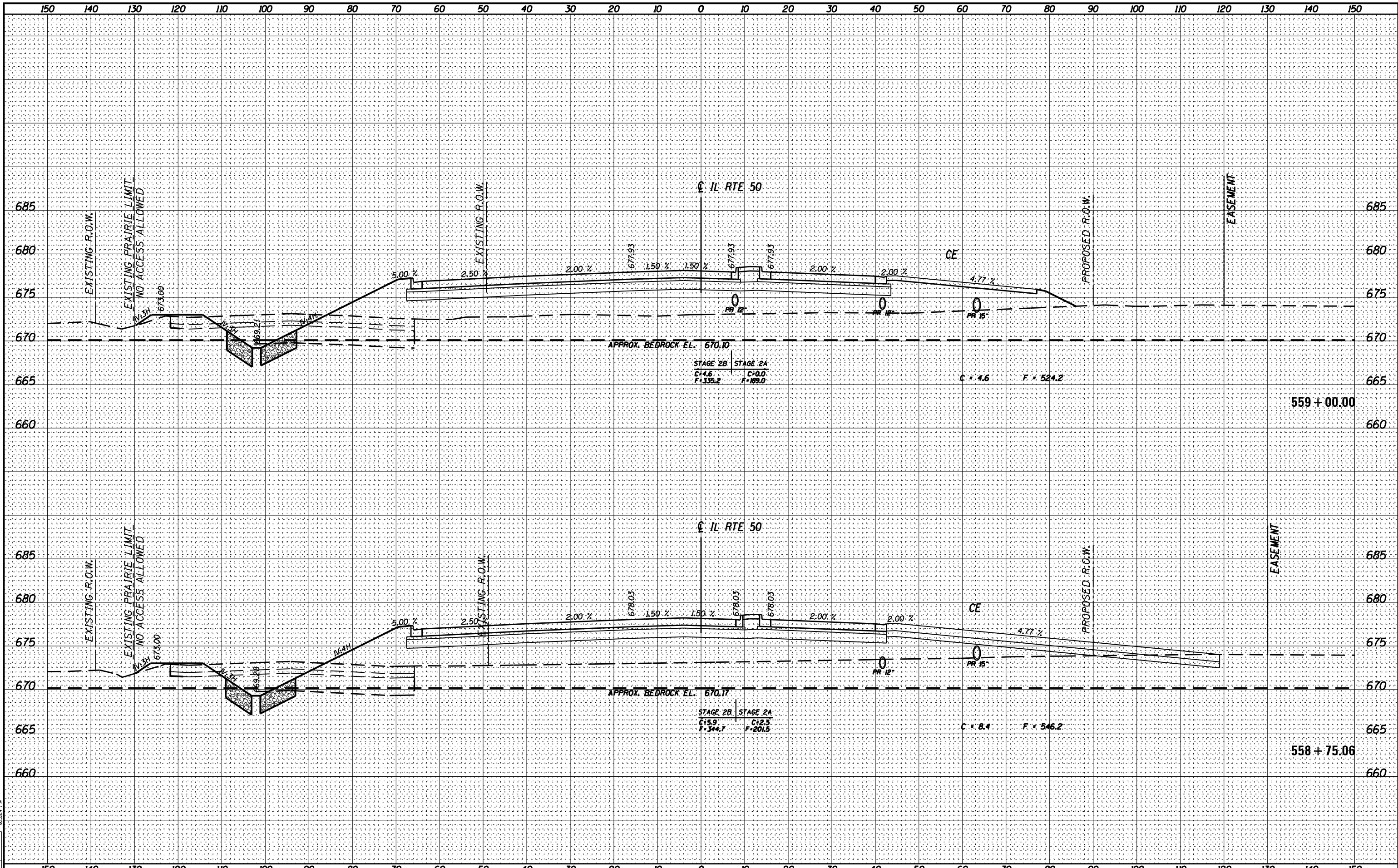
FILE NAME = D309H0038-sht-xsst018.dgn
 MODEL NAME =
 USER NAME = angel
 PLOT SCALE = 20.0000' / in.
 PLOT DATE = 8/7/2014

DESIGNED - DPA	REVISÉ -
DRAWN - MWH	REVISÉ -
CHECKED - DPA	REVISÉ -
DATE - 12/03/13	REVISÉ -

STATE OF ILLINOIS
 DEPARTMENT OF TRANSPORTATION

CROSS SECTIONS - IL 50
 I-57 AND 6000N RD (BOURBONNAIS PARKWAY)
 BOURBONNAIS, IL
 SCALE: SHEET OF SHEETS STA. 557+00.00 TO STA. 558+00.00

F.A.I. RTE.	SECTION	COUNTY	TOTAL SHEETS	SHEET NO.
57	(46-1)HBK-1	KANKAKEE	819	806
CONTRACT NO. 66982				
ILLINOIS FED. AID PROJECT				



LAYOUT: SIGGATEX
 DRAWN: SIGGATEX
 REVIEWED: SIGGATEX
 XS

FILE NAME = D309H0038-sht-xsht018.dgn
 MODEL NAME = XS

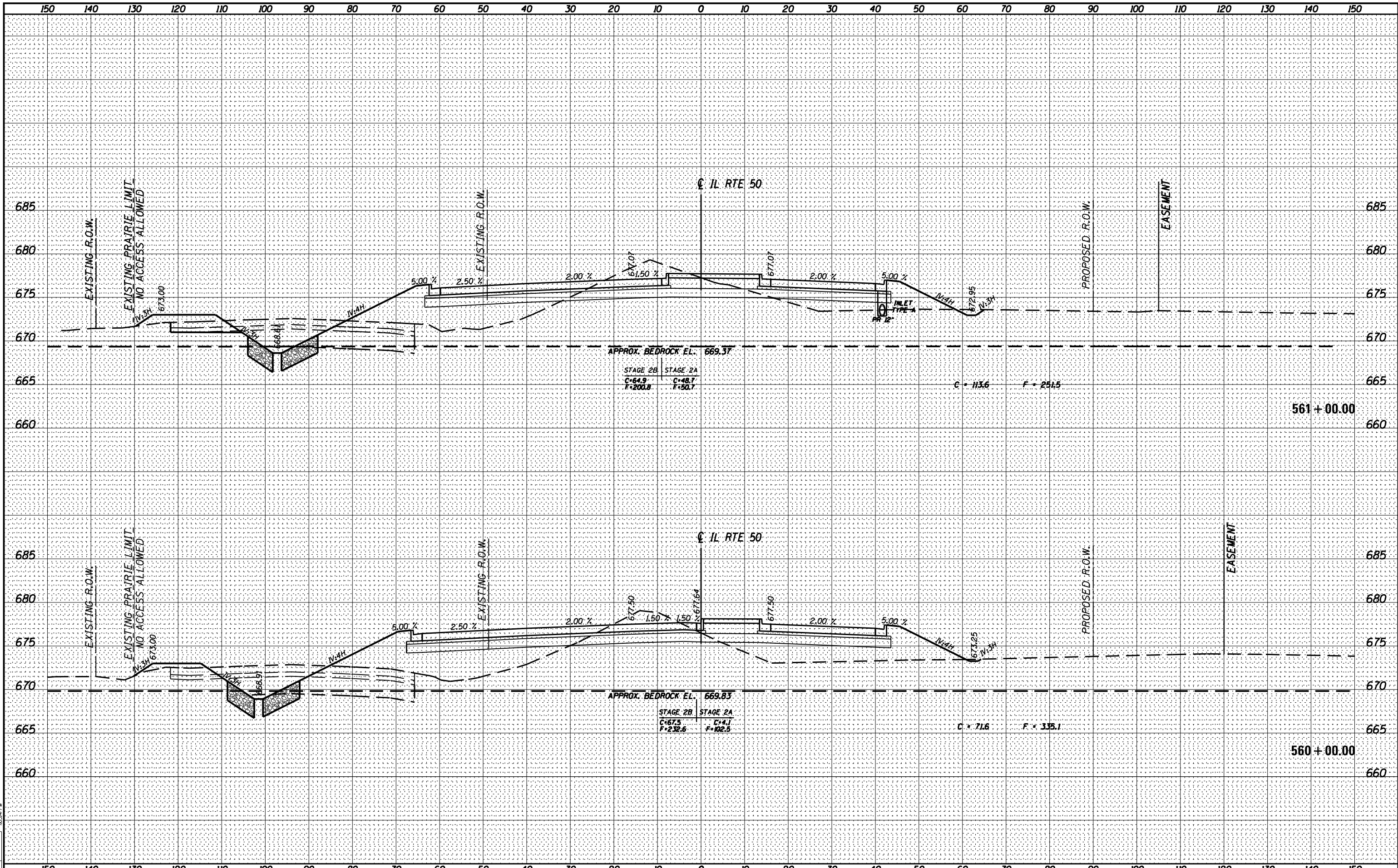
USER NAME = angel
 DESIGNED - DPA
 DRAWN - MWH
 CHECKED - DPA
 DATE - 12/03/13

REVISED -
 REVISED -
 REVISED -
 REVISED -

STATE OF ILLINOIS
 DEPARTMENT OF TRANSPORTATION

CROSS SECTIONS - IL 50
 I-57 AND 6000N RD (BOURBONNAIS PARKWAY)
 BOURBONNAIS, IL
 SCALE: SHEET OF SHEETS STA. 558+75.06 TO STA. 559+00.00

F.A.I. RTE.	SECTION	COUNTY	TOTAL SHEETS	SHEET NO.
57	(46-1)HBK-1	KANKAKEE	819	807
CONTRACT NO. 66982			ILLINOIS FED. AID PROJECT	



LAYOUT: SIGGATEX
 DRAWN: SIGGATEX
 REVIEWED: SIGGATEX
 XS

FILE NAME = D309H0038-sht-xsst018.dgn
 MODEL NAME =

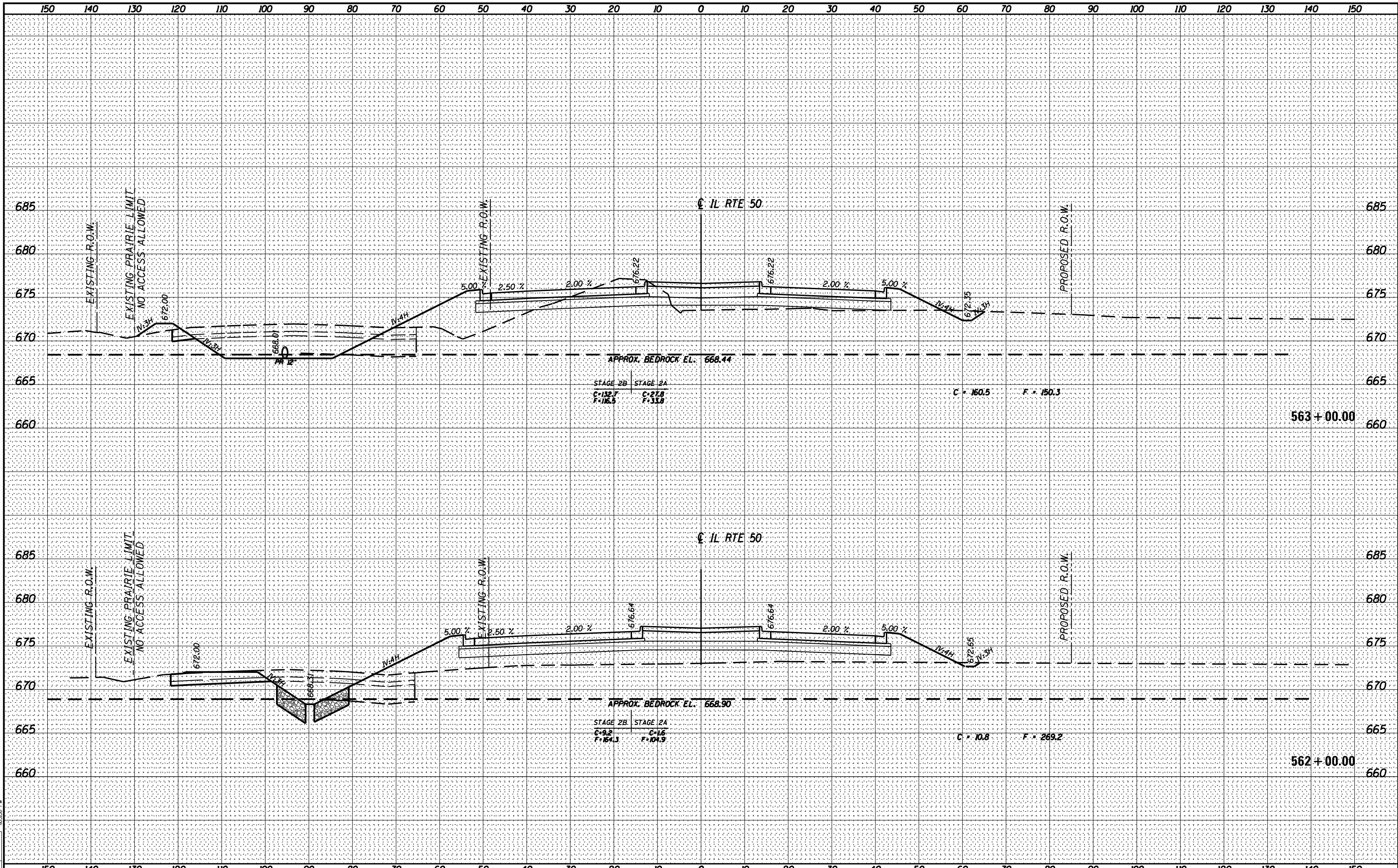
USER NAME = angel
 DESIGNED - DPA
 DRAWN - MWH
 CHECKED - DPA
 DATE - 12/03/13

REVISED -
 REVISED -
 REVISED -
 REVISED -

STATE OF ILLINOIS
 DEPARTMENT OF TRANSPORTATION

CROSS SECTIONS - IL 50
 I-57 AND 6000N RD (BOURBONNAIS PARKWAY)
 BOURBONNAIS, IL
 SCALE: SHEET OF SHEETS STA. 560+00.00 TO STA. 561+00.00

F.A.I. RTE.	SECTION	COUNTY	TOTAL SHEETS	SHEET NO.
57	(46-1)HBK-1	KANKAKEE	819	808
CONTRACT NO. 66982				
ILLINOIS FED. AID PROJECT				



LAYOUT: SIGGATEX
 DRAWN: SIGGATEX
 REVIEWED: SIGGATEX
 8/7/2014
 6:55:56 PM

FILE NAME = D:\309H0038-sht-xsht018.dgn
 MODEL NAME = XS

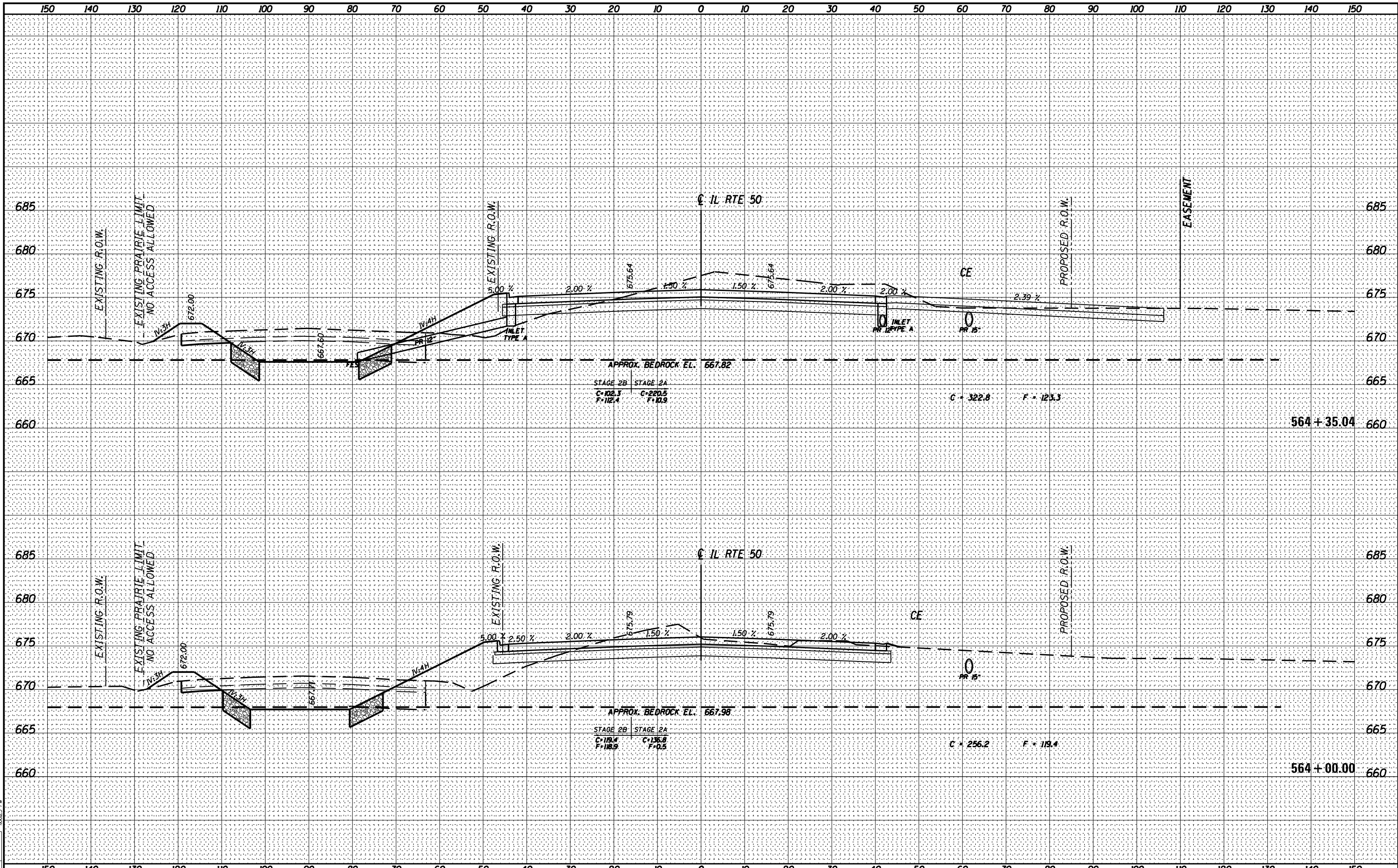
USER NAME = angel
 DESIGNED - DPA
 DRAWN - MWH
 CHECKED - DPA
 DATE - 12/03/13

REVISED -
 REVISED -
 REVISED -
 REVISED -

STATE OF ILLINOIS
 DEPARTMENT OF TRANSPORTATION

CROSS SECTIONS - IL 50
 I-57 AND 6000 RD (BOURBONNAIS PARKWAY)
 BOURBONNAIS, IL
 SCALE: SHEET OF SHEETS STA. 562+00.00 TO STA. 563+00.00

F.A.I. RTE.	SECTION	COUNTY	TOTAL SHEETS	SHEET NO.
57	(46-1)HBK-1	KANKAKEE	819	809
CONTRACT NO. 66982				
ILLINOIS FED. AID PROJECT				

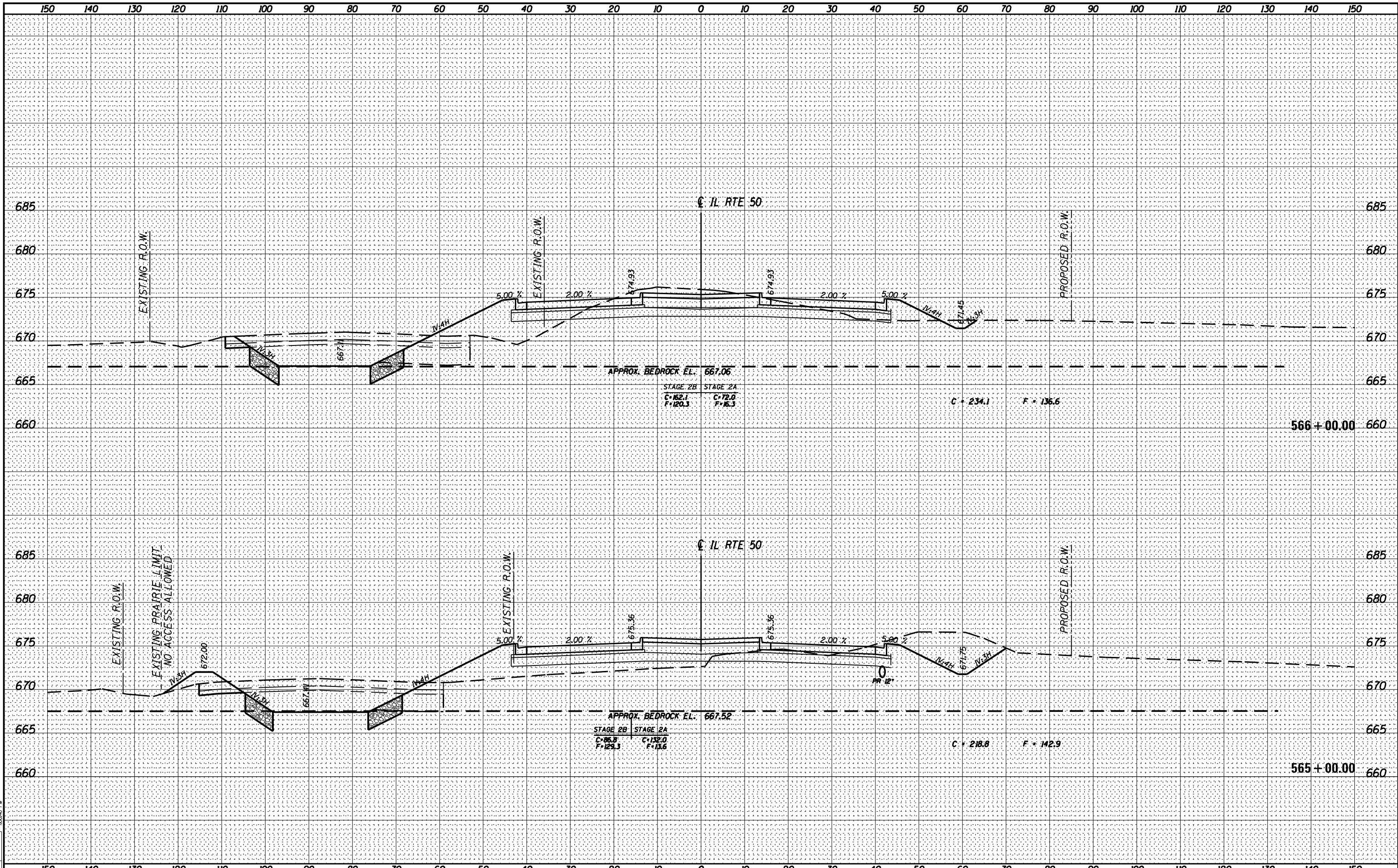


LAYOUT: SIGGATEX
 DRAWN: SIGGATEX
 REVIEWED: SIGGATEX
 FILE NAME: D:\309H0038-sht-xsht018.dgn
 MODEL NAME: XS
 USER NAME: angel
 DESIGNED: DPA
 DRAWN: MWH
 CHECKED: DPA
 DATE: 12/03/13
 REVISED: -
 REVISED: -
 REVISED: -
 REVISED: -

STATE OF ILLINOIS
 DEPARTMENT OF TRANSPORTATION

CROSS SECTIONS - IL 50
 I-57 AND 6000N RD (BOURBONNAIS PARKWAY)
 BOURBONNAIS, IL
 SCALE: SHEET OF SHEETS STA. 564+00.00 TO STA. 564+35.04

F.A.I. RTE.	SECTION	COUNTY	TOTAL SHEETS	SHEET NO.
57	(46-1)HBK-1	KANKAKEE	819	810
CONTRACT NO. 66982				
ILLINOIS FED. AID PROJECT				



LAYOUT: SIGGATEX
 DRAWN: SIGGATEX
 REVISED: SIGGATEX
 08/07/2014
 12:58:45 PM

FILE NAME = D:\309H0038-sht-xsst018.dgn
 MODEL NAME = XS
 USER NAME = angel

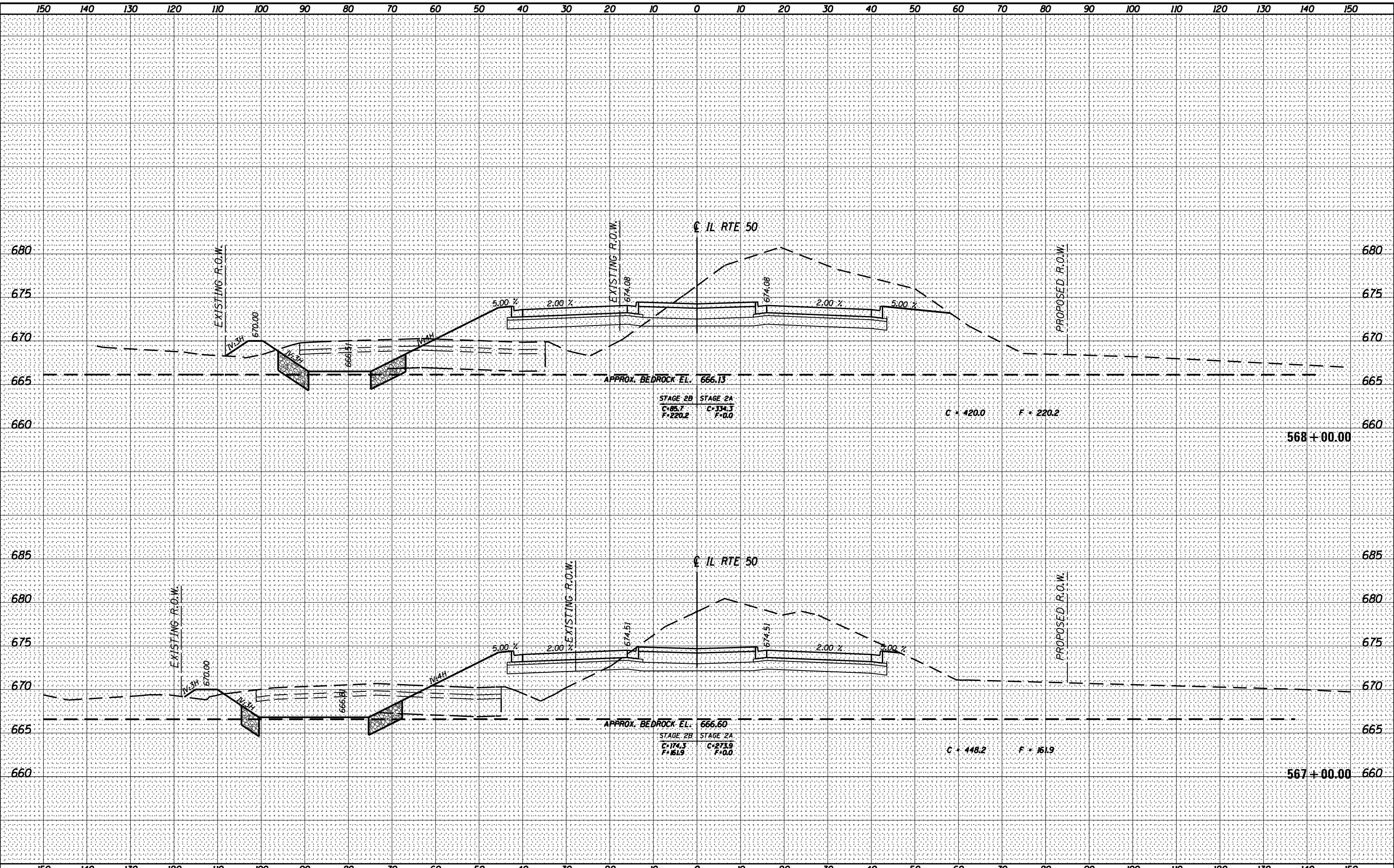
DESIGNED - DPA	REVISED -
DRAWN - MWH	REVISED -
CHECKED - DPA	REVISED -
DATE - 12/03/13	REVISED -

**STATE OF ILLINOIS
 DEPARTMENT OF TRANSPORTATION**

**CROSS SECTIONS - IL 50
 I-57 AND 6000N RD (BOURBONNAIS PARKWAY)
 BOURBONNAIS, IL**

SCALE: SHEET OF SHEETS STA. 565+00.00 TO STA. 566+00.00

F.A.I. RTE. 57	SECTION (46-1)HBK-1	COUNTY KANKAKEE	TOTAL SHEETS 819	SHEET NO. 811
			CONTRACT NO. 66982	
ILLINOIS FED. AID PROJECT				



LAYOUT: SIGGATEX
 DRAWN: SIGGATEX
 REVIEWED: SIGGATEX
 8/7/2014 4:50 PM

FILE NAME = D:\09\H0038-sht-xsst018.dgn
 MODEL NAME = XS
 USER NAME = angel

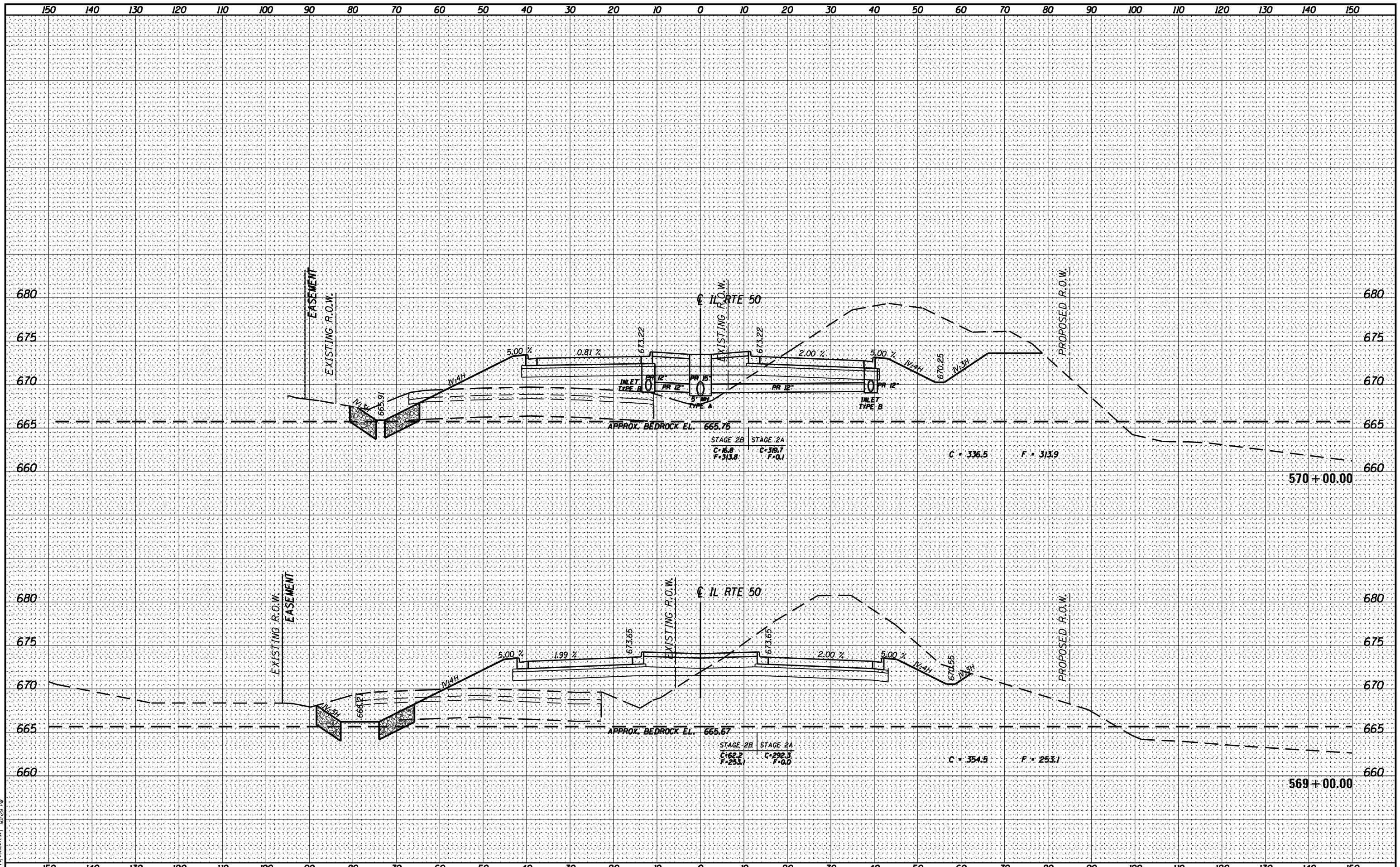
DESIGNED - DPA	REVISÉ -
DRAWN - MWH	REVISÉ -
CHECKED - DPA	REVISÉ -
DATE - 12/03/13	REVISÉ -

**STATE OF ILLINOIS
 DEPARTMENT OF TRANSPORTATION**

**CROSS SECTIONS - IL 50
 I-57 AND 6000 RD (BOURBONNAIS PARKWAY)
 BOURBONNAIS, IL**

SCALE: SHEET OF SHEETS STA. 567+00.00 TO STA. 568+00.00

F.A.I. RTE. 57	SECTION (46-1)HBK-1	COUNTY KANKAKEE	TOTAL SHEETS 819	SHEET NO. 812
			CONTRACT NO. 66982	
ILLINOIS FED. AID PROJECT				



LAYOUT: \$SIGLATEX\$ \$SIGLATEX\$
 DRAWN: \$SIGLATEX\$ \$SIGLATEX\$
 REVIEWED: \$SIGLATEX\$ \$SIGLATEX\$
 FILE NAME: D:\309H0038-sht-xsst018.dgn
 MODEL NAME: XS

FILE NAME =	USER NAME = angel	DESIGNED - DPA	REVISD -	STATE OF ILLINOIS DEPARTMENT OF TRANSPORTATION	CROSS SECTIONS - IL 50 I-57 AND 6000N RD (BOURBONNAIS PARKWAY) BOURBONNAIS, IL				F.A.I. RTE. 57	SECTION (46-1)HBK-1	COUNTY KANKAKEE	TOTAL SHEETS 819	SHEET NO. 813
D309H0038-sht-xsst018.dgn		DRAWN - MWH	REVISD -		SCALE:	SHEET	OF	SHEETS	STA. 569+00.00	TO STA. 570+00.00	CONTRACT NO. 66982		
MODEL NAME =		CHECKED - DPA	REVISD -								ILLINOIS FED. AID PROJECT		
		DATE - 12/03/13	REVISD -										



LAYOUT: SIGGATEX
 DRAWN: SIGGATEX
 REVIEWED: SIGGATEX
 XS

FILE NAME = D:\309H0038-sht-xsst018.dgn
 MODEL NAME = XS

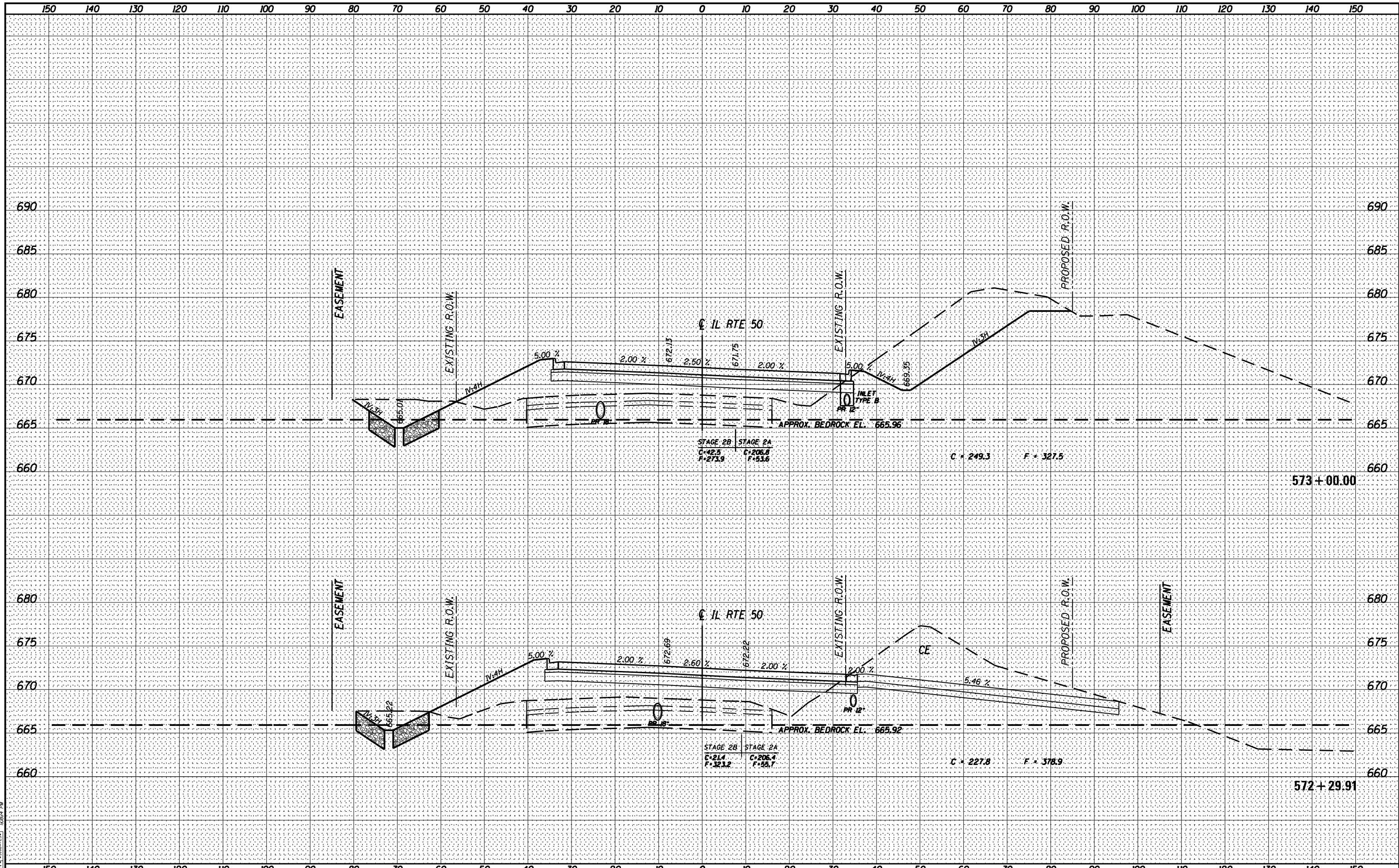
USER NAME = angel
 DESIGNED - DPA
 DRAWN - MWH
 CHECKED - DPA
 PLOT DATE = 8/7/2014

REVISIONS
 REVISIONS
 REVISIONS
 REVISIONS

STATE OF ILLINOIS
 DEPARTMENT OF TRANSPORTATION

CROSS SECTIONS - IL 50
 I-57 AND 6000N RD (BOURBONNAIS PARKWAY)
 BOURBONNAIS, IL
 SCALE: SHEET OF SHEETS STA. 571+00.00 TO STA. 572+00.00

F.A.I. RTE.	SECTION	COUNTY	TOTAL SHEETS	SHEET NO.
57	(46-1)HBK-1	KANKAKEE	819	814
CONTRACT NO. 66982			ILLINOIS FED. AID PROJECT	



LAYOUT: S:\SIGGATEX
 DRAWN: S:\SIGGATEX
 REVIEWED: S:\SIGGATEX
 XS

FILE NAME =
 D:\309H0038-sht-xsst018.dgn
 MODEL NAME =

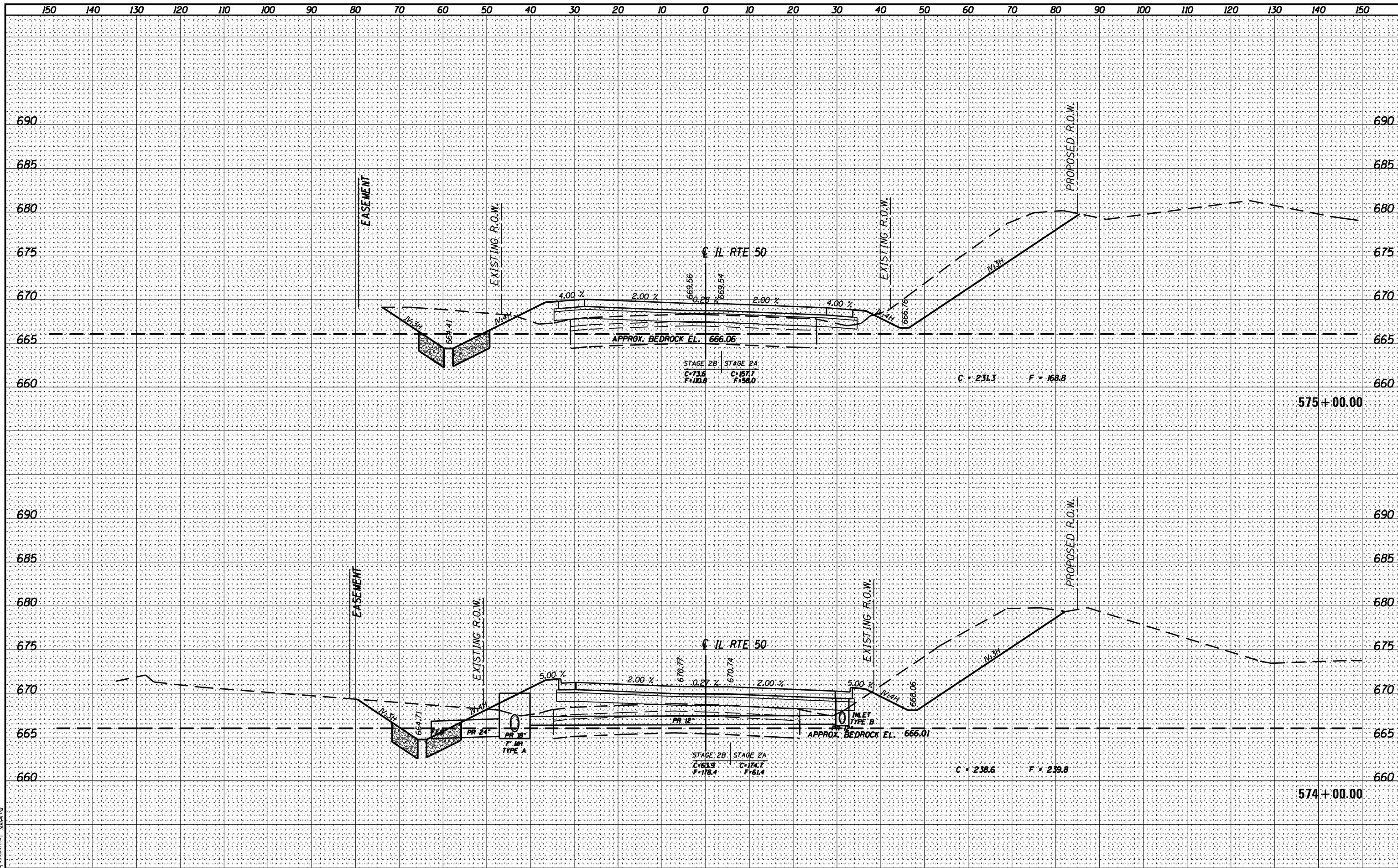
USER NAME = angel
 DESIGNED - DPA
 DRAWN - MWH
 CHECKED - DPA
 PLOT DATE = 8/7/2014

REVISÉ -
 REVISÉ -
 REVISÉ -
 REVISÉ -

STATE OF ILLINOIS
 DEPARTMENT OF TRANSPORTATION

CROSS SECTIONS - IL 50
 I-57 AND 6000N RD (BOURBONNAIS PARKWAY)
 BOURBONNAIS, IL
 SCALE: SHEET OF SHEETS STA. 572+29.91 TO STA. 573+00.00

F.A.I. RTE.	SECTION	COUNTY	TOTAL SHEETS	SHEET NO.
57	(46-1)HBK-1	KANKAKEE	819	815
CONTRACT NO. 66982				
ILLINOIS FED. AID PROJECT				



LAYOUT: SIGGATEX
DRAWN: SIGGATEX
REVIEWED: SIGGATEX
DATE: 8/7/2014

FILE NAME: D309H0038-sht-xsht018.dgn
MODEL NAME: XS

USER NAME: angel

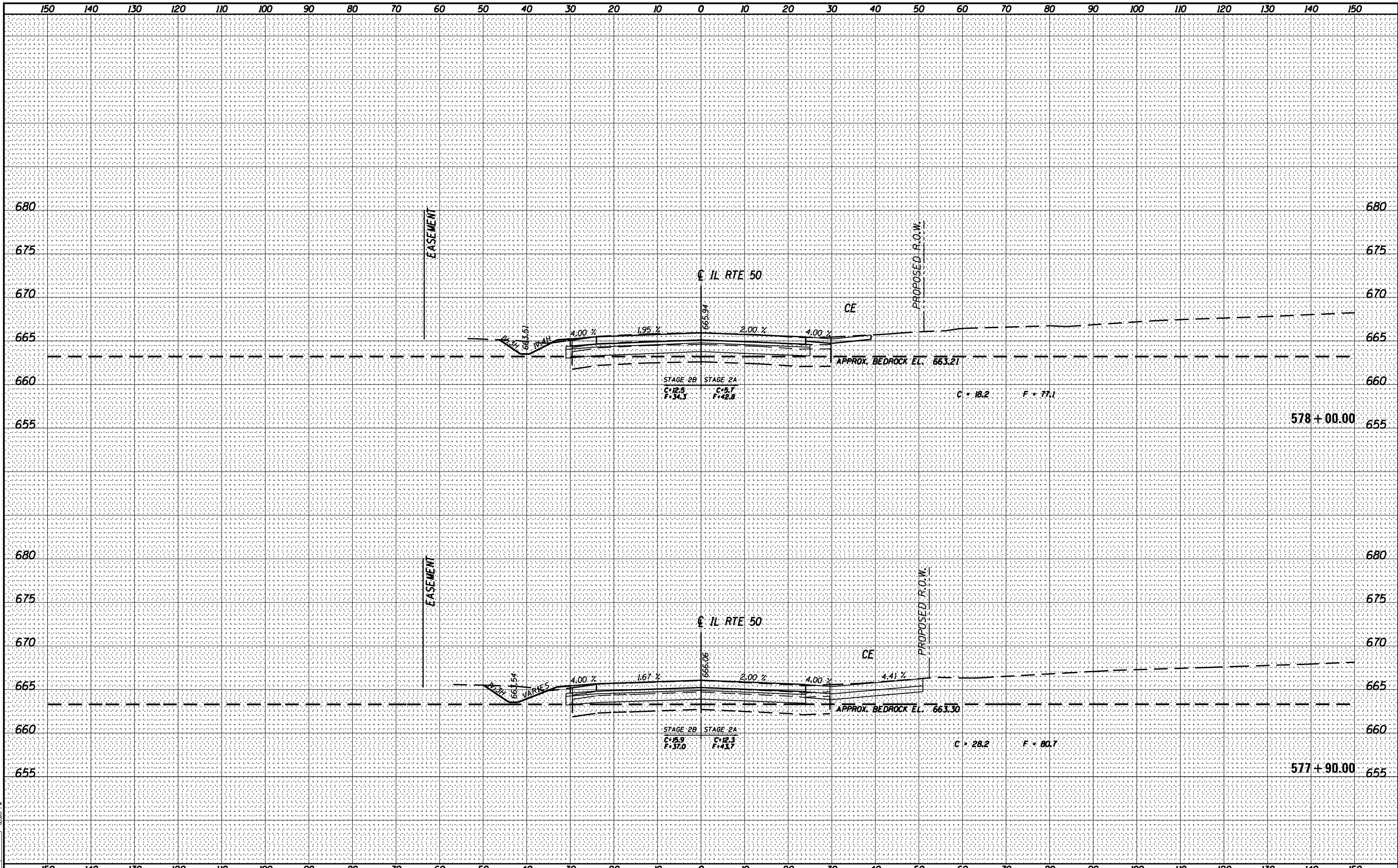
DESIGNED - DPA
DRAWN - MWH
CHECKED - DPA
DATE - 12/03/13

REVISD -
REVISD -
REVISD -
REVISD -

STATE OF ILLINOIS
DEPARTMENT OF TRANSPORTATION

CROSS SECTIONS - IL 50
I-57 AND 6000N RD (BOURBONNAIS PARKWAY)
BOURBONNAIS, IL
SCALE: SHEET OF SHEETS STA. 574+00.00 TO STA. 575+00.00

F.A.I. RTE.	SECTION	COUNTY	TOTAL SHEETS	SHEET NO.
57	(46-1)HBK-1	KANKAKEE	819	816
CONTRACT NO. 66982				
ILLINOIS FED. AID PROJECT				



LAYOUT: SIGGATEX
 DRAWN: SIGGATEX
 REVIEWED: SIGGATEX

FILE NAME = D:\309H0038-sht-xsht018.dgn
 MODEL NAME = XS
 USER NAME = angel

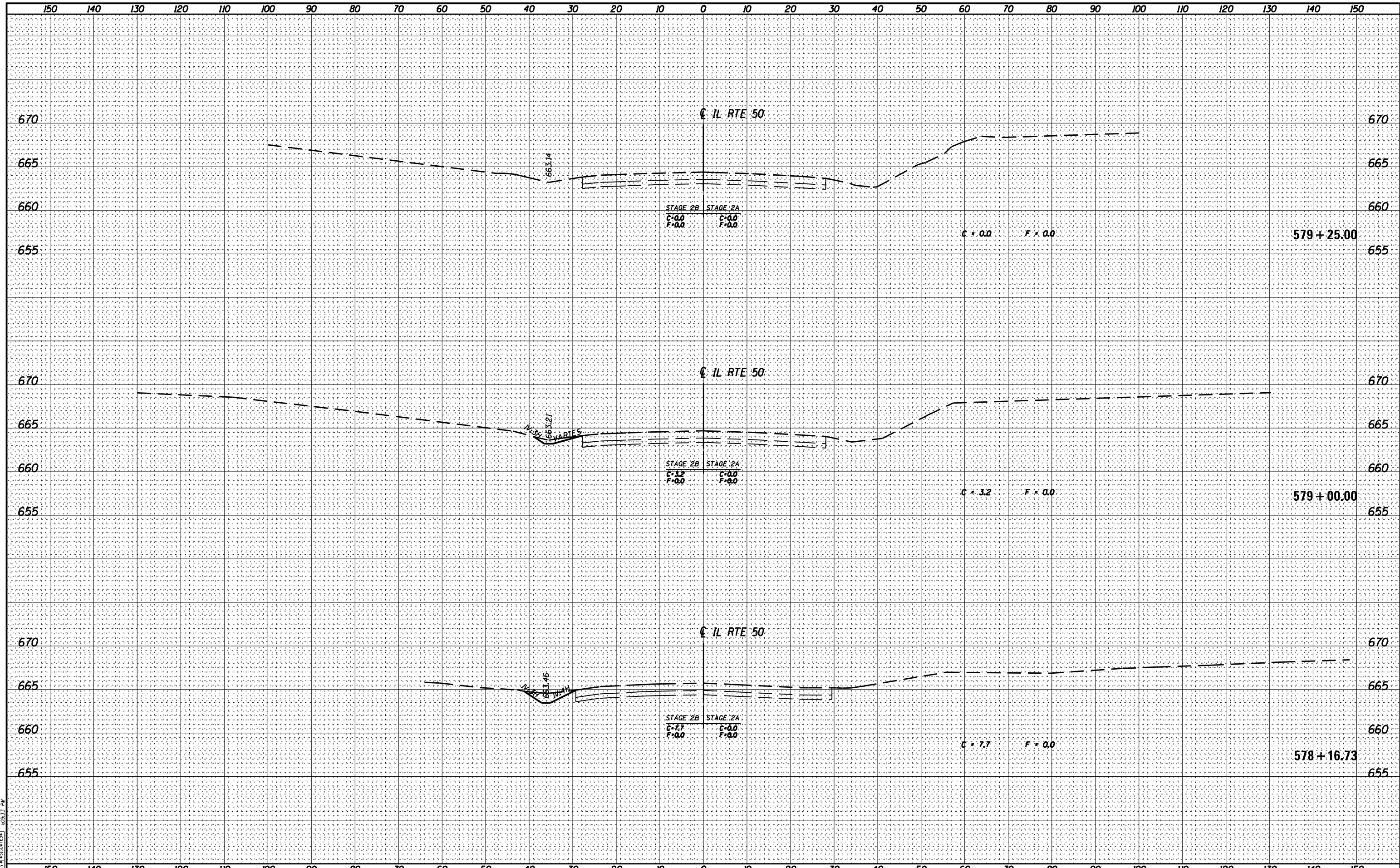
DESIGNED - DPA	REVISÉ -
DRAWN - MWH	REVISÉ -
CHECKED - DPA	REVISÉ -
DATE - 12/03/13	REVISÉ -

**STATE OF ILLINOIS
 DEPARTMENT OF TRANSPORTATION**

**CROSS SECTIONS - IL 50
 I-57 AND 6000N RD (BOURBONNAIS PARKWAY)
 BOURBONNAIS, IL**

F.A.I. RTE. 57	SECTION (46-1)HBK-1	COUNTY KANKAKEE	TOTAL SHEETS 819	SHEET NO. 818
CONTRACT NO. 66982				
ILLINOIS FED. AID PROJECT				

SCALE: SHEET OF SHEETS STA. 577+90.00 TO STA. 578+00.00



LAYOUT: SIGGATEX
 DRAWN: SIGGATEX
 REVIEWED: SIGGATEX

FILE NAME = D:\309H0038-sht-xsst018.dgn
 MODEL NAME = XS

USER NAME = angel
 DESIGNED - DPA
 DRAWN - MWH
 CHECKED - DPA
 PLOT DATE = 8/7/2014

REVISED -
 REVISED -
 REVISED -
 REVISED -

STATE OF ILLINOIS
 DEPARTMENT OF TRANSPORTATION

CROSS SECTIONS - IL 50
 I-57 AND 6000N RD (BOURBONNAIS PARKWAY)
 BOURBONNAIS, IL
 SCALE: SHEET OF SHEETS STA. 578+16.73 TO STA. 579+00.00

F.A.I. RTE.	SECTION	COUNTY	TOTAL SHEETS	SHEET NO.
57	(46-1)HBK-1	KANKAKEE	819	819
CONTRACT NO. 66982				
ILLINOIS FED. AID PROJECT				