

**GUIDE SIGN SEQUENCE  
NUMBERING CODE**

**EXAMPLE**  
EB-TR-03

DIRECTION OF TRAFFIC

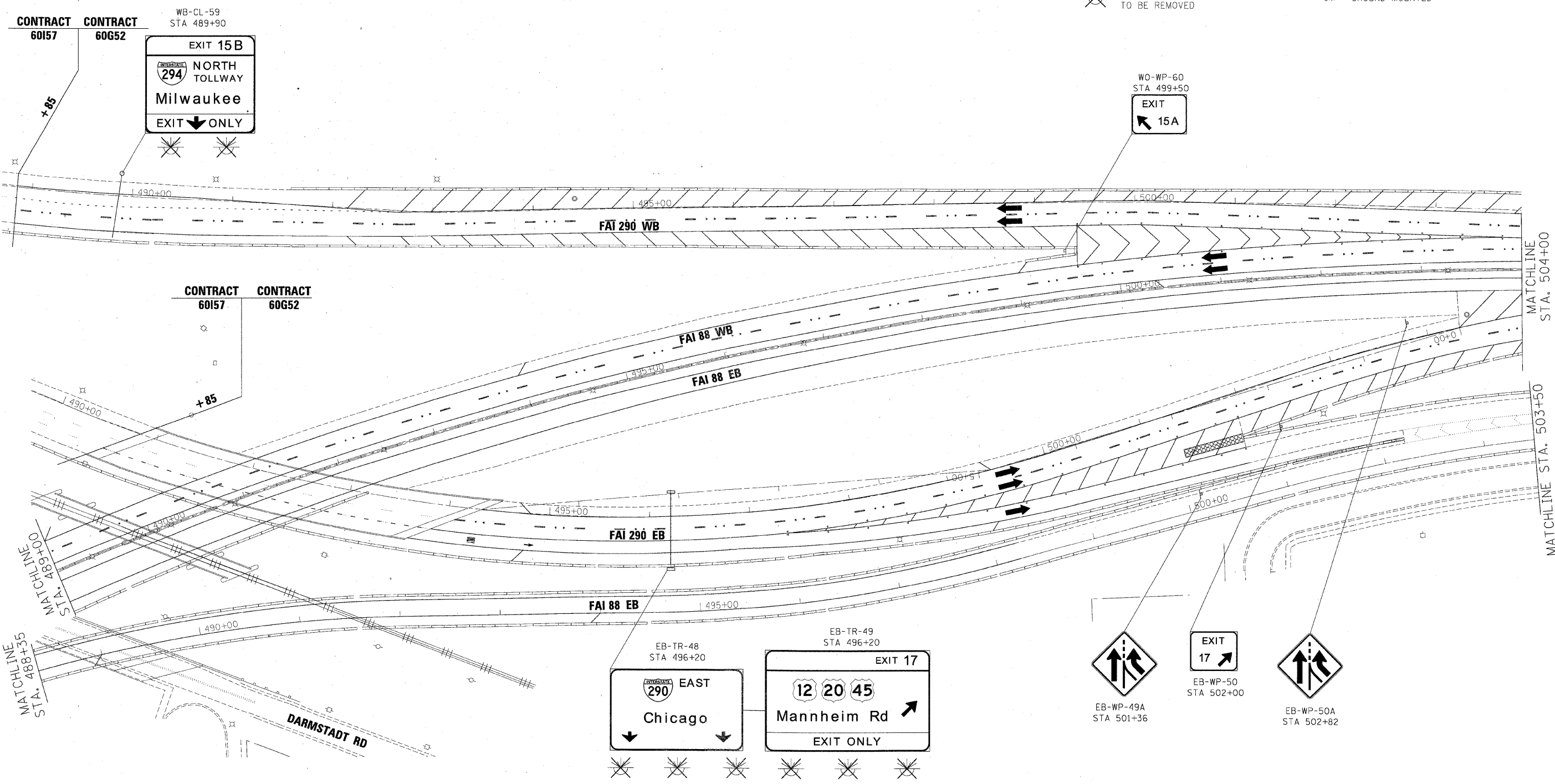
NB - NORTHBOUND FAI 355  
SB - SOUTHBOUND FAI 355  
EB - EASTBOUND FAI 290  
WB - WESTBOUND FAI 290  
LS - LAKE STREET  
AT - ARMY TRAIL RD  
83 - IL 83 (KINGERY HWY)  
64 - IL 64 (NORTH AVE)

REMOVE AND REPLACE SIGN PANEL  
EXISTING LUMINAIRE TO BE REMOVED

SIGN PANEL NUMBER

MOUNTING TYPE

TR - TRUSS  
CL - CANTILEVER  
BM - BRIDGE MOUNTED  
WP - WOOD POST  
BS - BREAKAWAY STEEL  
LP - LIGHT POLE  
GM - GROUND MOUNTED



FILE NAME -	DESIGNED - AJP	REVISED -
...prpln_ABC_60222_290_pvmtkg_07.dgn	DRAWN - TMB	REVISED -
USER NAME = tblank	CHECKED - JMM	REVISED -
PLOT DATE = 1/25/2010	DATE - 1/25/10	REVISED -

**benesch**

**STATE OF ILLINOIS  
DEPARTMENT OF TRANSPORTATION**

**SIGNING PLANS**  
**I-290 MAINLINE POB TO STA 504+00**

SCALE: 1"=50' SHEET NO. 1 OF 12 SHEETS STA. TO STA.

F.A.I. RTE.	SECTION	COUNTY	TOTAL SHEETS	SHEET NO.
290	(3435, ETC., 3838)RS-5	COOK	264	144
CONTRACT NO. 60652				
FED. ROAD DIST. NO. ILLINOIS FED. AID PROJECT				