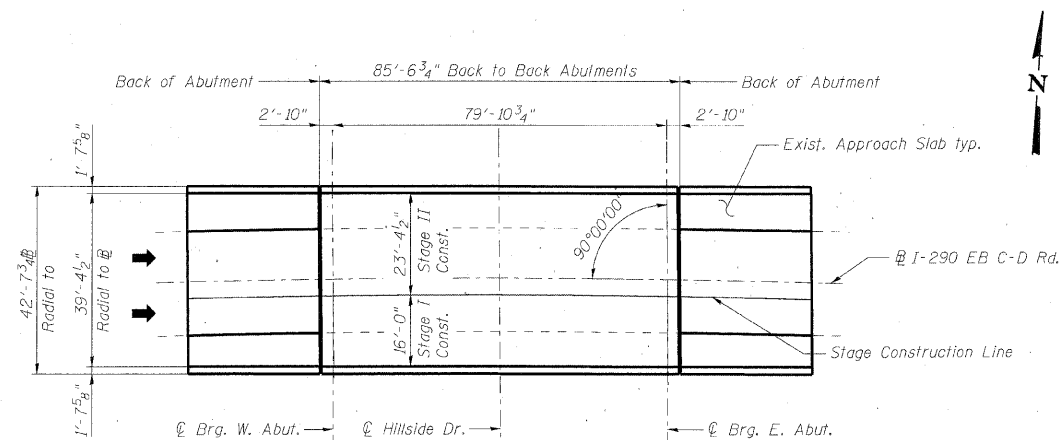


STATE OF ILLINOIS
DEPARTMENT OF TRANSPORTATION

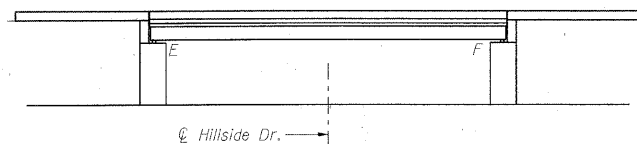
Existing Structure:
Existing Bridge No. 016-2759 was built in 2002. The structure is a simple span composite steel bridge with a 7½" concrete deck.

Stage construction shall be utilized to maintain traffic during construction.

No salvage.



PLAN



ELEVATION

TOTAL BILL OF MATERIAL

ITEM	UNIT	SUPER	SUB	TOTAL
Concrete Sealer	Sq. Ft.	5,442		5,442

DESIGN SPECIFICATIONS

2002 AASHTO Standard Specifications
for Highway Bridges, 17th Edition

DESIGN STRESSES

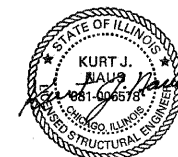
$f'_c = 3,500$ psi
 $f_y = 60,000$ psi

SCOPE OF WORK

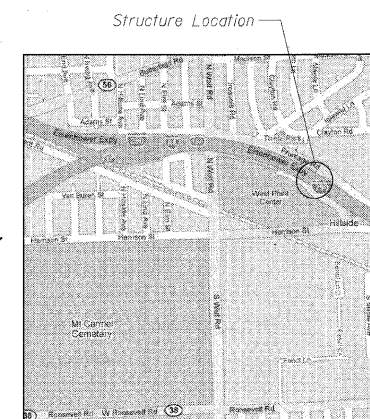
Apply concrete sealer to bridge deck, parapets and approach slabs.

GENERAL NOTES

- Plan dimensions and details relative to existing plans are subject to nominal construction variations. The Contractor shall field verify existing dimensions and details affecting new construction and make necessary approved adjustments prior to construction or ordering of materials. Such variations shall not be cause for additional compensation for a change in scope of the work, however, the Contractor will be paid for the quantity actually furnished at the unit price bid for the work.
- Concrete Sealer shall be applied to the bridge deck, parapets, and approach slabs. All surfaces to be sealed shall be cleaned thoroughly prior to sealer application. Cost included in Concrete Sealer.
- Stage construction shall be utilized to maintain traffic during construction.



EXPIRATION DATE 11-30-10
DATE 1-25-10



LOCATION SKETCH

GENERAL PLAN AND ELEVATION
I-290 EB C-D ROAD OVER HILLSIDE DRIVE
COOK COUNTY
STATION 524+16
STRUCTURE NO. 016-2759

DESIGNED	DMS
CHECKED	EFS
DRAWN	RMG
CHECKED	KWS

benesch

alfred benesch & company
Engineers • Surveyors • Planners
205 North Michigan Avenue, Suite 2400
Chicago, Illinois 60601
312-565-0450 Job No. 10050

SHEET NO. 1	F.A.I. RTE.	SECTION	COUNTY	TOTAL SHEETS	SHEET NO.
1 SHEETS	290	(3435, ETC., 3838)RS-5	COOK	264	220
FED. ROAD DIST. NO.			ILLINOIS FED. AID PROJECT		
CONTRACT NO. 60G52					