

F.A.P. RTE.	SECTION	COUNTY	TOTAL SHEETS	SHEET NO.
VAR. DIST 8 BRIDGE DECK 2011-4	ILLINOIS	MADISON	29	1
CONTRACT NO. 76E44				

STATE OF ILLINOIS
DEPARTMENT OF TRANSPORTATION
DIVISION OF HIGHWAYS

PROPOSED
HIGHWAY PLANS

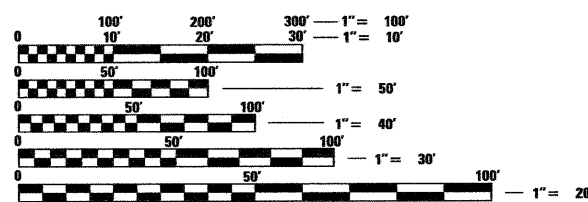
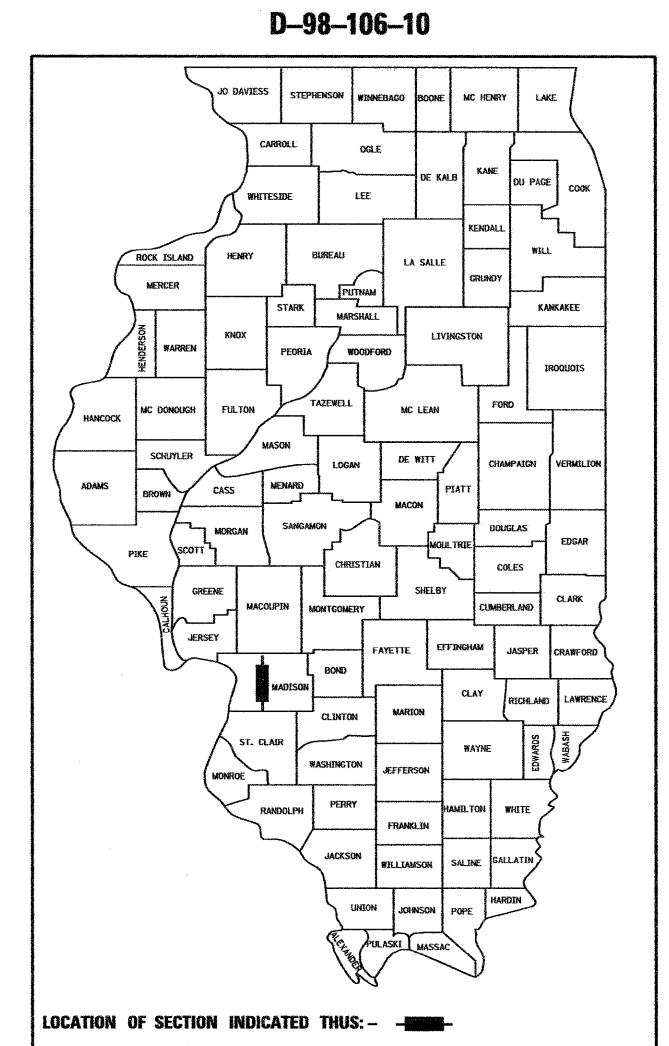
VARIOUS ROUTES
SECTION DIST 8 BRIDGE DECK 2011-4
BRIDGE DECK SEALING
MADISON COUNTY
C-98-131-10

INDEX OF SHEETS

- 1-2 COVER SHEET
- 3 GENERAL NOTES
- 4 SUMMARY OF QUANTITIES
- 5 TRAFFIC CONTROL SCHEDULE
- 6 TRAFFIC CONTROL PLANS
- 7-29 BRIDGE DECK SEALING PLANS
HIGHWAY STANDARDS

IDOT HIGHWAY STANDARDS

- 000001-06
- 001006
- 701201-04
- 701421-03
- 701601-07
- 701701-07
- 701801-04
- 701901-01



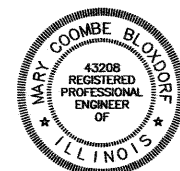
FULL SIZE PLANS HAVE BEEN PREPARED USING STANDARD ENGINEERING SCALES. REDUCED SIZED PLANS WILL NOT CONFORM TO STANDARD SCALES. IN MAKING MEASUREMENTS ON REDUCED PLANS, THE ABOVE SCALES MAY BE USED.

J.U.L.I.E.
 JOINT UTILITY LOCATION INFORMATION FOR EXCAVATION
 1-800-892-0123
 OR 811

PROJECT ENGINEER PATTI LEBEAU, P.E. 618-346-3179
PROJECT MANAGER HERVE GELIN, P.E. 618-346-3323

CONTRACT NO. 76E44

SEE SHEET 2 FOR
 LOCATION MAP



Mary Coombe Bloxdorf
 ILLINOIS STRUCTURAL NO. 4859
 Expires 11/30/12
 Date: 01/06/11

Mary Coombe Bloxdorf 01/06/11
 Mary Coombe Bloxdorf, P.E. Date
 License Expires 11/30/2011

PLANS PREPARED BY

CB Coombe-Bloxdorf P.C.
 -CIVIL ENGINEERS-
 -STRUCTURAL ENGINEERS-
 -LAND SURVEYORS-
 Design Firm License No. 184-002703

STATE OF ILLINOIS
 DEPARTMENT OF TRANSPORTATION
 DIVISION OF HIGHWAYS

SUBMITTED December 23, 2010
William R. Frey Jr.
 DEPUTY DIRECTOR OF HIGHWAYS, REGION 5 ENGINEER

January 28, 2011
Scott E. Stitt P.E. Jr.
 Acting ENGINEER OF DESIGN AND ENVIRONMENT

January 28, 2011
Christine M. Reed Jr.
 DIRECTOR OF HIGHWAYS, CHIEF ENGINEER

**PRINTED BY THE AUTHORITY
 OF THE STATE OF ILLINOIS**