

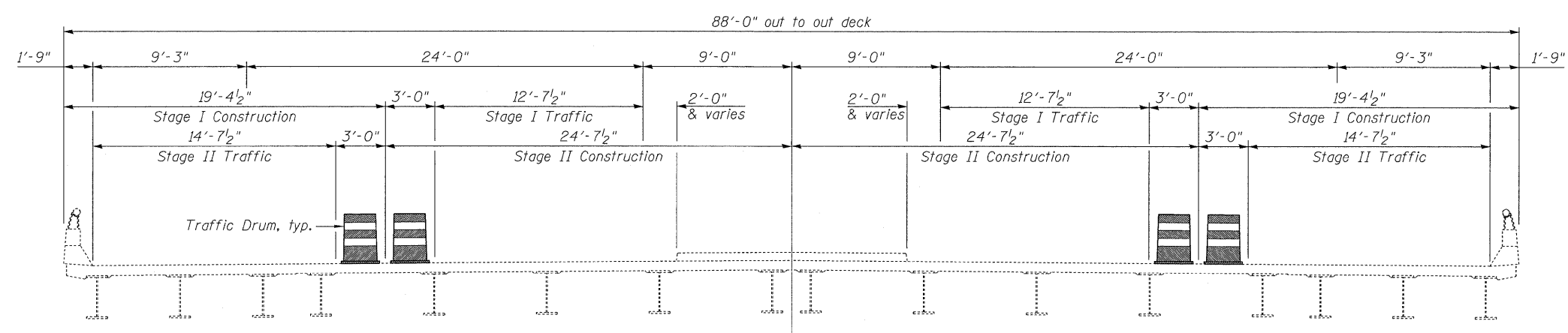
GENERAL NOTES

A Concrete Sealer shall be applied to the surfaces of the deck, median and parapets (See Special Provisions for BRIDGE DECK CONCRETE SEALER).
 Existing pavement markings shall be temporarily covered prior to application of the deck surface treatment, to prevent the material from being applied over the markings. The temporary covering shall be removed after the application of the deck surface treatment and prior to opening to traffic. Cost included with Concrete Sealer.

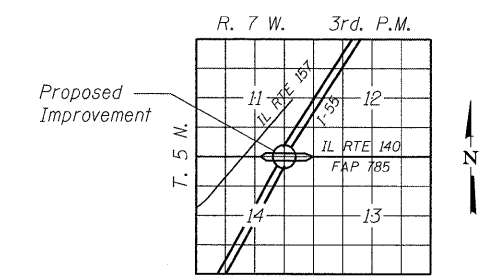
TOTAL BILL OF MATERIAL

ITEM	UNIT	SUPER	SUB	TOTAL
Concrete Sealer	Sq. Ft.	19,260		19,260

GENERAL PLAN



CROSS SECTION



LOCATION SKETCH

GENERAL PLAN
IL RTE. 140 OVER F.A.I. 55
F.A.P. RTE. 785
SECTION DIST. 8 BRIDGE DECK 2011-4
MADISON COUNTY
STATION 738+51.63
STRUCTURE NO. 060-0073

Coombe-Bloxdorf P.C. - CIVIL ENGINEERS - - STRUCTURAL ENGINEERS - - LAND SURVEYORS - Design Firm License No. 184-002703	PROJECT NO. 09025-4 SCALE DATE 08/16/10 DESIGN BY MCB DRAWN BY CFC CHECKED BY	SHEET NO. 2 23 SHEETS	F.A. RTE. VAR. DIST 8 BRIDGE DECK 2011-4	SECTION COUNTY MADISON	TOTAL SHEETS 29	SHEET NO. 8
	FED. ROAD DIST. NO. ILLINOIS FED. AID PROJECT			CONTRACT NO. 76E44		