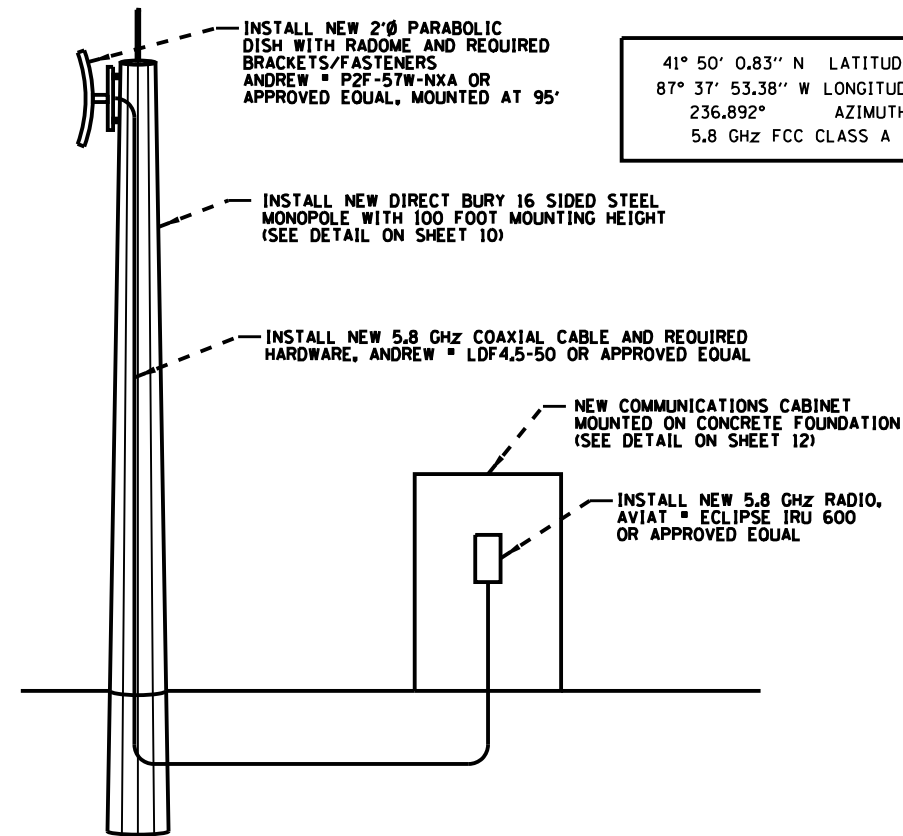


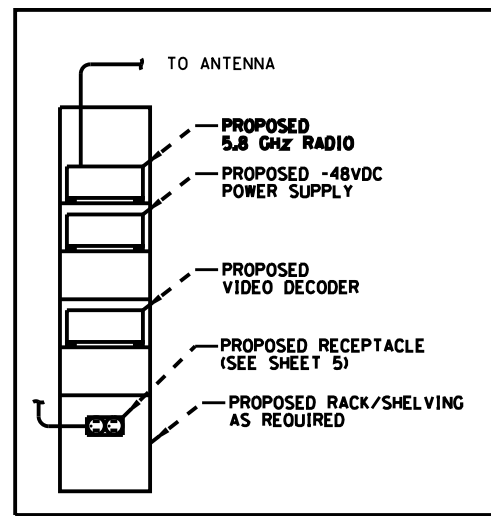
41° 49' 49.31" N LATITUDE
 87° 38' 16.97" W LONGITUDE
 56.892° AZIMUTH
 5.8 GHZ FCC CLASS A

EXISTING ETP BUILDING ELEVATION LOOKING NORTH
RADIO & ANTENNA DETAIL – ETP
 N.T.S.



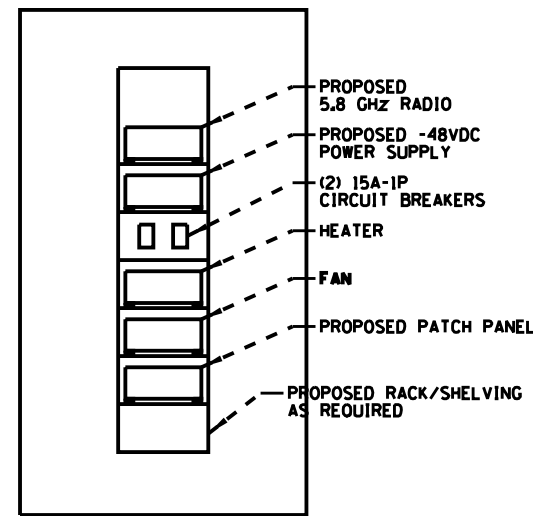
41° 50' 0.83" N LATITUDE
 87° 37' 53.38" W LONGITUDE
 236.892° AZIMUTH
 5.8 GHZ FCC CLASS A

RADIO & ANTENNA DETAIL – DAN RYAN
 N.T.S.



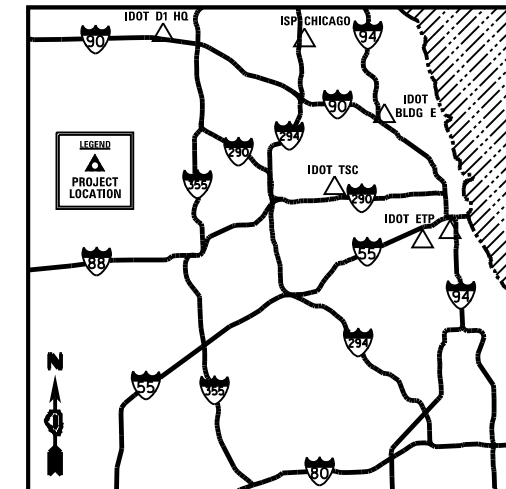
USE PROPOSED 120V RECEPTACLE FOR POWER TO EQUIPMENT
TELEPHONE ROOM – SOUTH WALL ELEVATION

EQUIPMENT LAYOUT DETAIL – ETP
 N.T.S.



PROPOSED COMMUNICATIONS CABINET ELEVATION

EQUIPMENT LAYOUT DETAIL – DAN RYAN
 N.T.S.



FILE NAME * #FILES	USER NAME * #USERS	DESIGNED <i>R.T.</i>	REVISED -
		DRAWN <i>G.M.</i>	REVISED -
		CHECKED <i>R.T.</i>	REVISED -
		DATE <i>12/11/2013</i>	REVISED -

STATE OF ILLINOIS
 DEPARTMENT OF TRANSPORTATION

ITS CENTER-TO-CENTER INTEGRATION PROJECT	
RADIO, ANTENNA, & EQUIPMENT DETAILS – IDOT ETP / DAN RYAN	
SCALE: <i>N.T.S.</i>	SHEET NO. <i>11</i> OF <i>25</i> SHEETS STA. _____ TO STA. _____

F.A. RTE.	SECTION	COUNTY	TOTAL SHEETS	SHEET NO.
	2009-0871	COOK	25	11
			CONTRACT NO. 60134	
ILLINOIS FED. AID PROJECT				