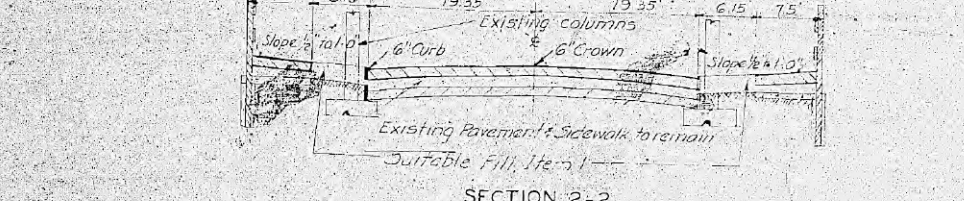
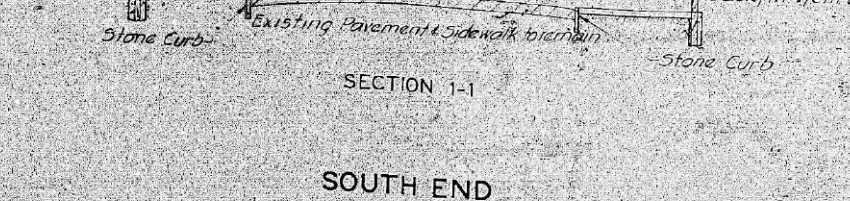
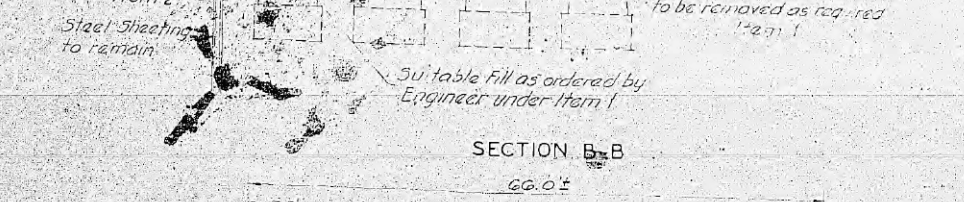
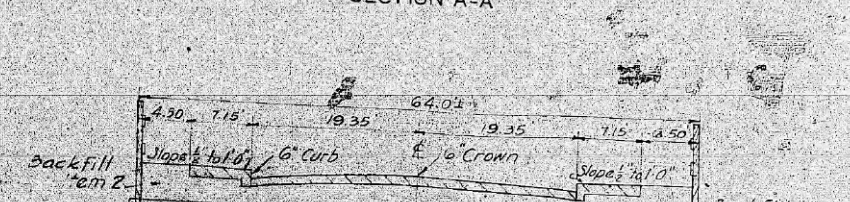
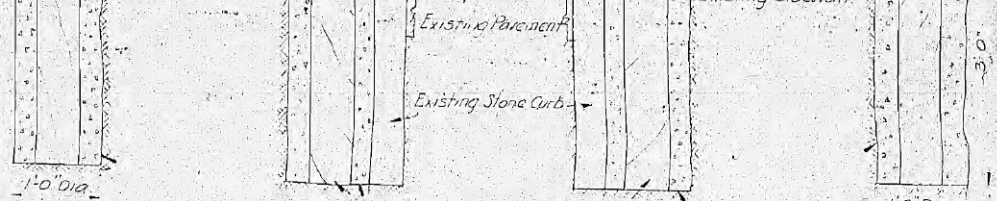
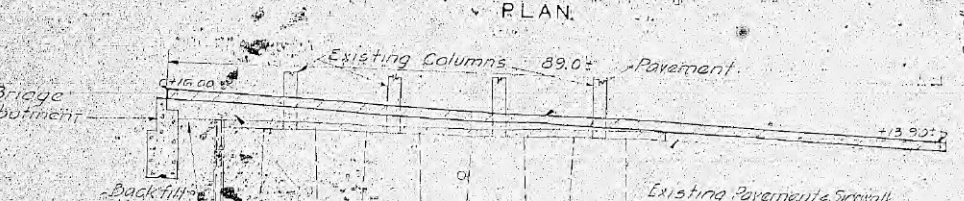
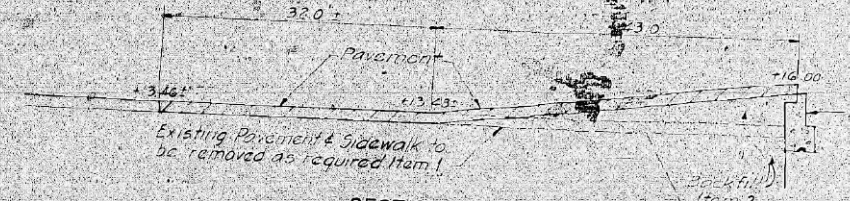
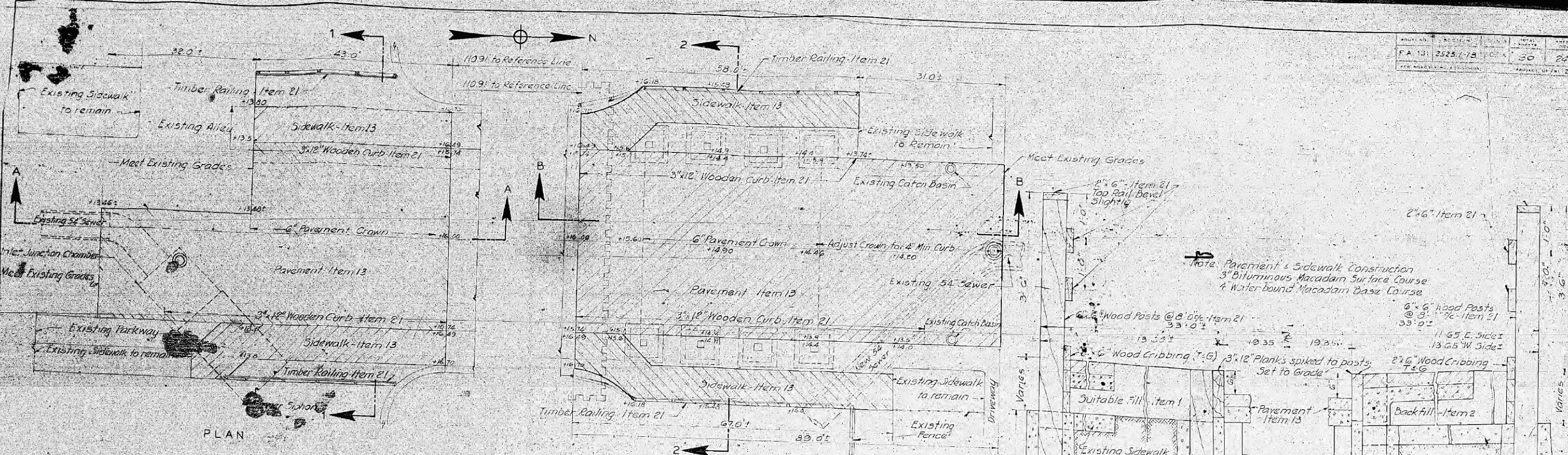
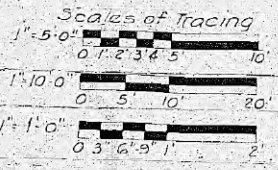


PROJECT NO.	SECTION	SHEET NO.	TOTAL SHEETS
FA 13	2525-1-1B	30	24
DATE	APPROVED	PROJECT	DATE
		US 74	2013



Note: -
Excavation for Pavement and Sidewalk shall be included under Item 1.
Excavation for Railing and Curb Posts shall be included under Item 21.
For details of Railing see sheet 25.

Drawn By L.D. Weinberg
Traced By B. Bernardino
Checked By J. J. [unclear]
Approved By [unclear]
Subway [unclear]



SCALE: AS NOTED
SHEET NO. 24 OF 30 SHEETS



D160W29-sht-Ex-Siphon-08.dgn	DESIGNED -	REVISED -	12/18/2013
USER NAME = BAW1tor1	DRAWN - BAW	REVISED -	
PLOT SCALE = 100.0000' / in.	CHECKED - JWC	REVISED -	
PLOT DATE = 12/19/2013	DATE - 10/30/2013	REVISED -	

STATE OF ILLINOIS
DEPARTMENT OF TRANSPORTATION

AS BUILT SIPHON PLANS
PEORIA STREET
SCALE: NONE SHEET 8 OF 14 SHEETS STA. TO STA.

F.A.I. RTE.	SECTION	COUNTY	TOTAL SHEETS	SHEET NO.
90/94/290	2013-011R	COOK	356	761
CONTRACT NO. 60W29			ILLINOIS FED. AID PROJECT	