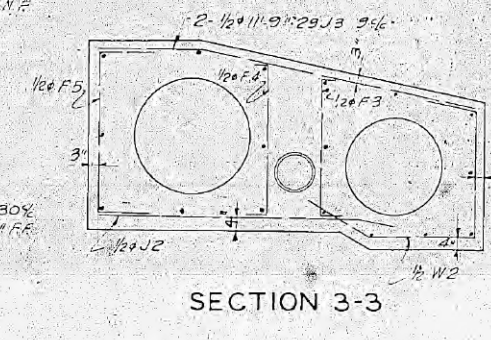
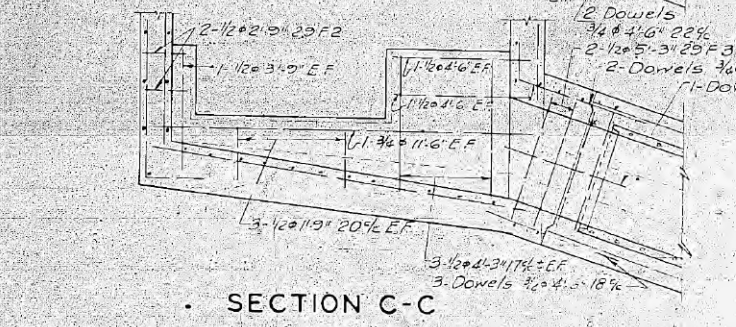
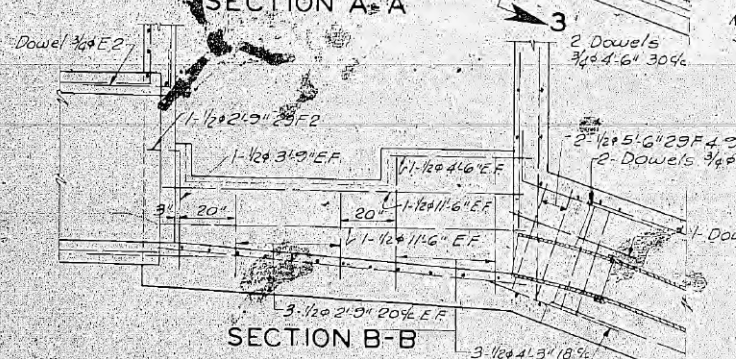
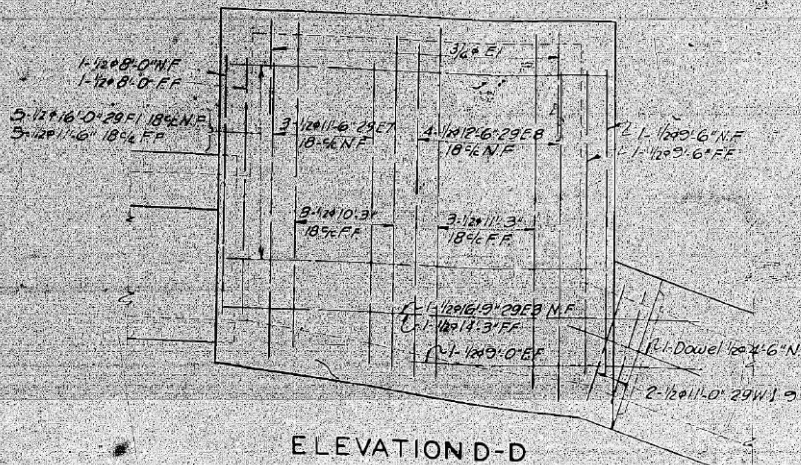
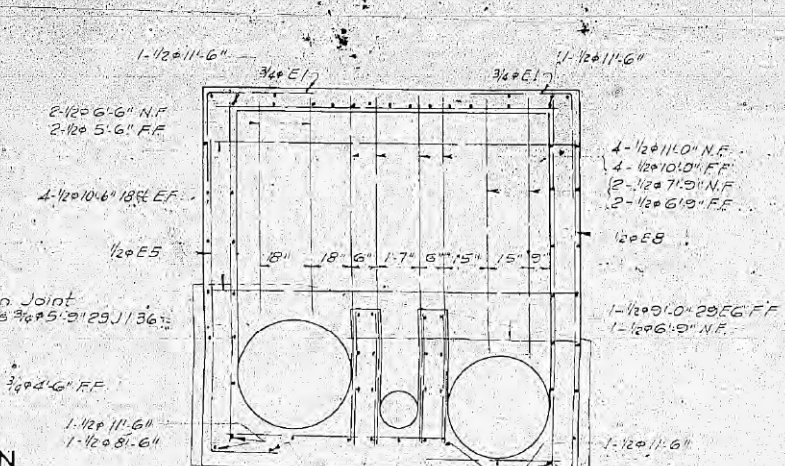
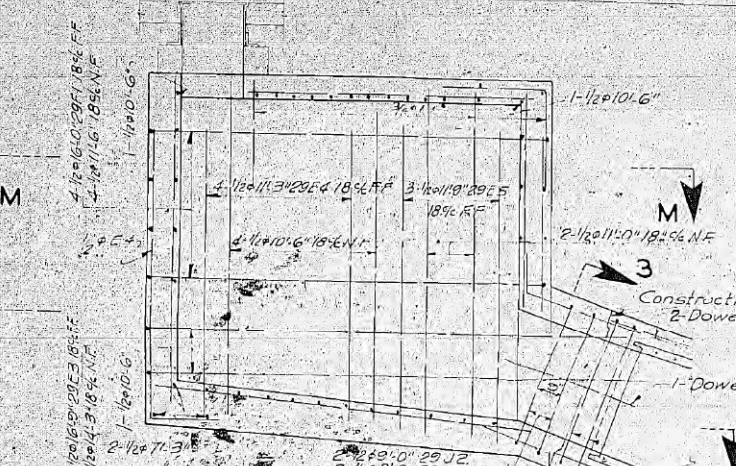
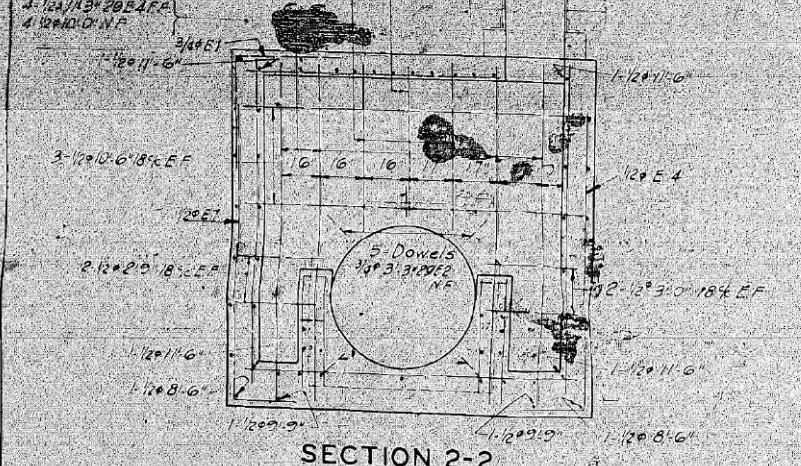


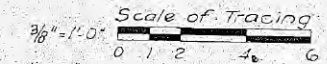
- 1-1203/6" FF
- 1-1204/0" NF
- 2-1204/0" EF
- 2-1205/3" NF
- 1-1204/13" 20E4 FF
- 1-1204/0" NF



- 2-1204-3" 11% at Invert
- 2-1201/0" 20E2 11% at Invert
- 3-1204/0" 10% at Invert
- 3-1201/0" 20E1 10% at Invert

General Notes
 Unless otherwise noted on drawing, reinforcement bars shall have the following minimum covering of concrete:
 in bottom of floor slabs 3"
 in top of floor slabs or inverts 3"
 in top of roof slabs 2"
 in bottom of roof slabs 1 1/2"
 in walls each face 2"
 Bars shall be lapped a minimum of 33 diameters at splices.
 The following abbreviations are used in locating bars:
 B denotes Bottom
 T denotes Top
 NF denotes Near face
 FF denotes Far face
 EF denotes Each face

For concrete details see sheet 21
 For list of reinforcement bars see sheet 30, pages 4 & 5
 For other details of inlet junction chamber see sheet 21



CITY OF CHICAGO
 DEPARTMENT OF SUBWAYS AND SUPERHIGHWAYS
 WEST ROUTE SUPERHIGHWAY
 SECTION 2525.1-B
 PEORIA STREET BRIDGE
 INLET JUNCTION CHAMBER
 REINFORCEMENT DETAILS

SCALE: AS NOTED SHEET NO. 28 OF 30 SHEETS

FILE PATH = c:\388935\pml\ascomonline\local\PAVED\DWG\Documents\01\Americas\Transportation\60269938\Circle\Phase II\000_CAD\000_Roadway\Sheets\60W28_Contract\0160W28-sht-Ex-Siphon-12.dgn



D160W28-sht-Ex-Siphon-12.dgn	DESIGNED -	REVISED -	12/18/2013
USER NAME = BAWtor1	DRAWN - BAW	REVISED -	
PLOT SCALE = 100.0000' / in.	CHECKED - JWC	REVISED -	
PLOT DATE = 12/19/2013	DATE - 10/30/2013	REVISED -	

STATE OF ILLINOIS
 DEPARTMENT OF TRANSPORTATION

AS BUILT SIPHON PLANS PEORIA STREET			
SCALE: NONE	SHEET 12	OF 14 SHEETS	STA. TO STA.

F.A.I. R.T.E.	SECTION	COUNTY	TOTAL SHEETS	SHEET NO.
90/94/290	2013-01R	COOK	356	76M
				CONTRACT NO. 60W29
ILLINOIS FED. AID PROJECT				