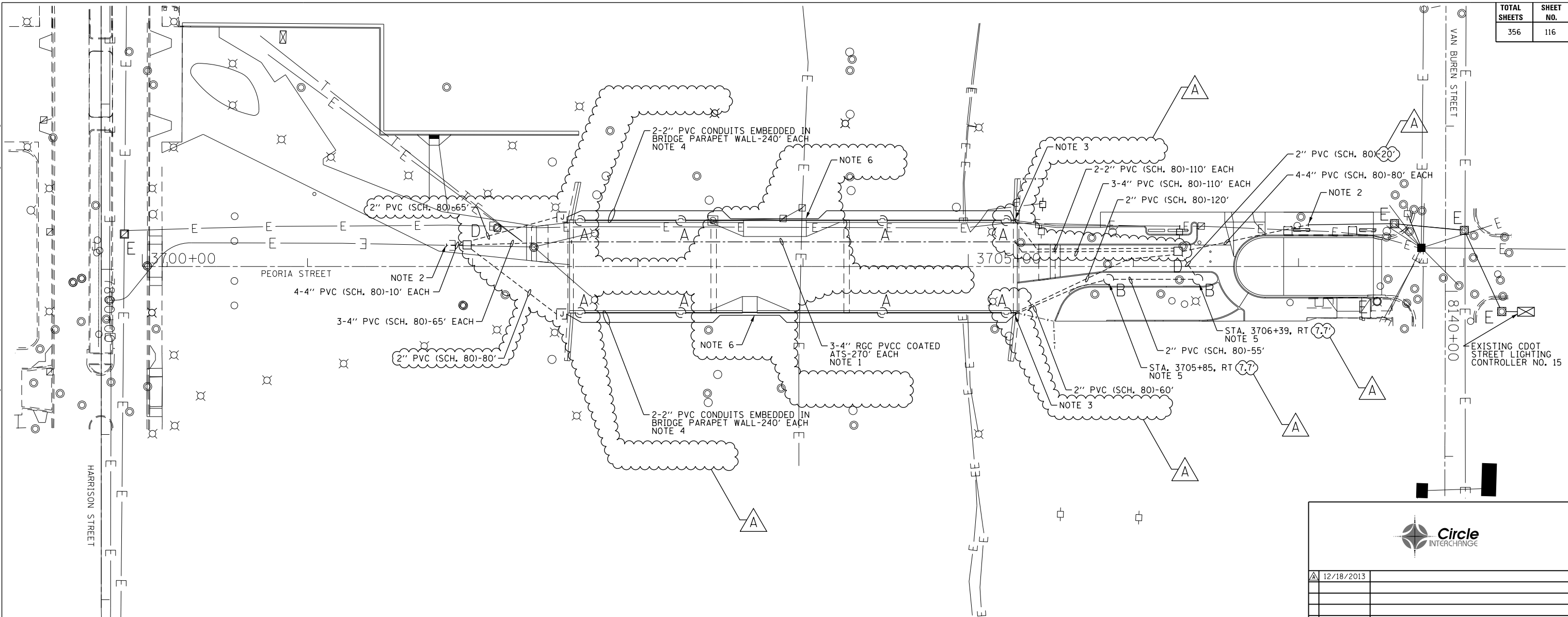


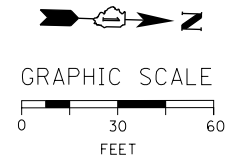
c:\pwworking\acem00\bwitort\d0220246\DI60W29-sht-Light-06.dgn
 12/19/2013 10:29:49 AM



"A"	LIGHT POLE FOUNDATION IS INTEGRAL TO THE BRIDGE STRUCTURE PARAPET WALL. SEE STRUCTURAL PLANS FOR DETAILS AND FINAL LOCATION OF FOUNDATION.
"B"	PROVIDE 20"x5', 1" A.R., 10" B.C. FOUNDATION FOR LIGHT POLE, PER DWG. NOS. 565 AND 837.
"C"	DRILL EXISTING HANDHOLE/MANHOLE.
"D"	PROVIDE 3'x4'x4' CONCRETE MANHOLE PER DRAWING NO. 729 WITH 30" FRAME AND COVER PER DRAWING NO. 847.
"E"	EXISTING TO REMAIN.

NOTES:

- PROVIDE THREE 4-INCH RIGID GALVANIZED STEEL PVC COATED CONDUITS ATTACHED TO STRUCTURE. THE CONDUITS SHALL BE MOUNTED UNDER THE BRIDGE DECK. SEE STRUCTURAL PLANS FOR LOCATION OF CONDUITS.
- INTERCEPT EXISTING CITY CONDUITS AND CONNECT TO PROPOSED CONDUITS AS SHOWN.
- SEE DRAWING NO. E-12, EMBEDDED BRIDGE CONDUIT DETAIL-A FOR CONDUIT EXITING PARAPET WALL DETAILS.
- PROVIDE TWO 2-INCH SCHEDULE 40 PVC CONDUITS IN BOTH BRIDGE PARAPET WALLS; ONE FOR THE LIGHTING CIRCUITS AND ONE SPARE. SEE STRUCTURAL PLANS FOR LOCATIONS, DETAILS AND INSTALLATION OF CONDUITS.
- INSTALL LIGHT POLE FOUNDATION IN THE CENTER OF THE ISLAND.
- SEE DRAWING NO. E-12, EMBEDDED BRIDGE CONDUIT DETAIL-B FOR CONDUIT ROUTED IN SUPERSTRUCTURE AROUND THE CTA STATION.



FOR LIGHTING CABLE AND EQUIPMENT INSTALLATION PLANS SEE DRAWING NO. E-07.
 FOR LIGHTING REMOVAL PLANS SEE DRAWING NO. E-08.

DATE	REVISION
12/18/2013	
CITY OF CHICAGO DEPARTMENT OF TRANSPORTATION DIVISION OF ENGINEERING	
CONSULTANT: <small>303 EAST WACKER DRIVE, SUITE 1400 CHICAGO, IL 60601-5276 PHONE: (312) 313-7700 FAX: (312) 313-6800</small>	
WORK ORDER NO.	DATE
COST ALLOCATION ACCOUNT	
APPROPRIATION ACCOUNT	MATERIAL LABOR
PEORIA STREET LIGHTING CONDUIT AND FOUNDATION PLAN	
CITY OF CHICAGO <small>DEPT. OF TRANSPORTATION DIVISION OF ELECTRICAL OPERATIONS</small>	
DRAFTSMAN: CAM	ENGINEER: WDS
SUPERVISING ENGINEER: JPC	ELEC. DESIGN ENGR.
ENGINEER OF ELECTRICITY:	
GEN'L SUPT. OF ELECTRICITY:	
DEPUTY COMMISSIONER:	
SIZE: 22" 34"	SCALE: 1" = 30'
DATE: 05/14/13	DATE:
C.D.O.T. PROJECT NO.:	DWG. NO.:
	6 OF 19

E-06