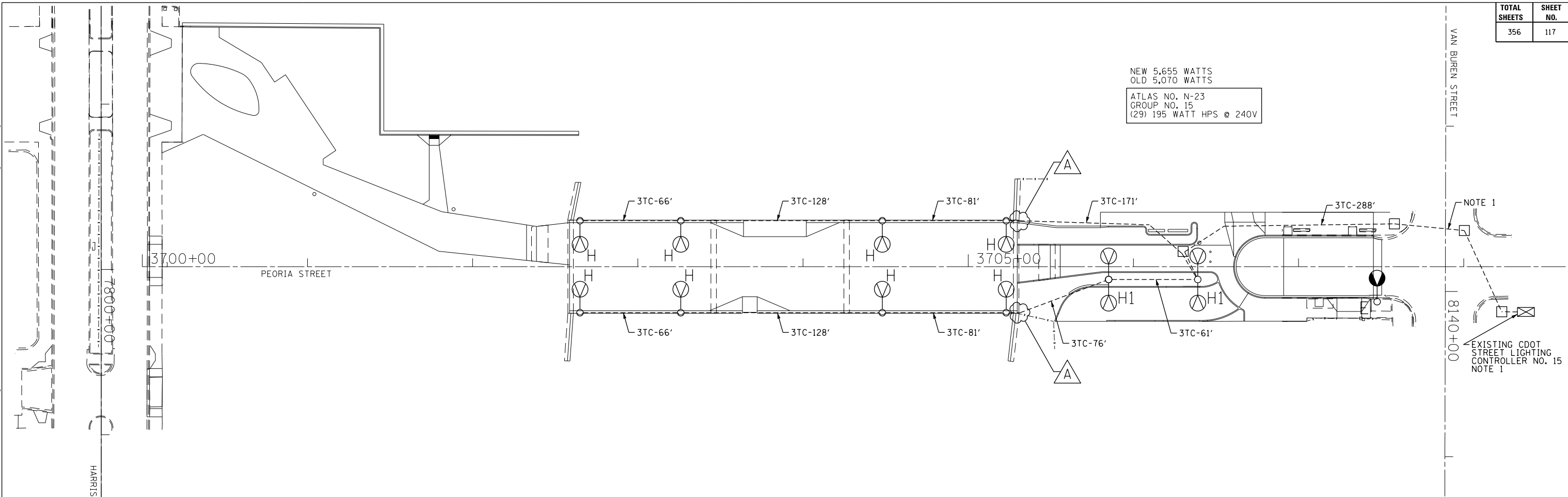
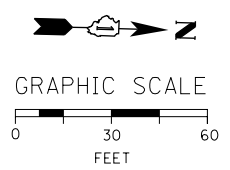


c:\pwworking\aecom\00\bw\itort\d0220246\DI60W29-sht-Light-07.dgn
 12/19/2013 10:29:21 AM



NEW 5,655 WATTS
 OLD 5,070 WATTS
 ATLAS NO. N-23
 GROUP NO. 15
 (29) 195 WATT HPS @ 240V

NOTE 1
 EXISTING CDOT STREET LIGHTING CONTROLLER NO. 15
 NOTE 1



NOTES:

1. ROUTE NEW LIGHTING CIRCUIT THROUGH EXISTING CITY CONDUITS AND MANHOLES INTO THE EXISTING CDOT LIGHTING CONTROLLER AND MAKE THE NECESSARY CONNECTIONS TO THE EXISTING CIRCUIT BREAKERS. THIS WORK WILL NOT BE PAID FOR SEPARATELY AND SHALL BE INCLUDED IN THE COST OF THE "CABLE IN CONDUIT, TRIPLEX" PAY ITEM.

"H" PROVIDE 12.5' ALUMINUM POLE, 150W HPS LUMINAIRE AND 8 FOOT ALUMINUM DAVIT ARM PER DRAWING NOS. 940 AND 945.
 "H1" PROVIDE 12.5' ALUMINUM POLE, TWO 150W HPS LUMINAIRES AND TWIN 8 FOOT DAVIT ARMS PER DRAWING NOS. 940 AND 945.

DATE	12/18/2013	REVISION	
CITY OF CHICAGO DEPARTMENT OF TRANSPORTATION DIVISION OF ENGINEERING			
CONSULTANT: AECOM <small>303 EAST WACKER DRIVE, SUITE 1400 CHICAGO, IL 60601-5276 PHONE: (312) 313-7100 FAX: (312) 313-6800</small>			
WORK ORDER NO.		DATE	
COST ALLOCATION ACCOUNT			
APPROPRIATION ACCOUNT		MATERIAL	
		LABOR	
PEORIA STREET LIGHTING CABLE AND EQUIPMENT INSTALLATION PLAN			
CITY OF CHICAGO <small>DEPT. OF TRANSPORTATION DIVISION OF ELECTRICAL OPERATIONS</small>			
DRAFTSMAN:	CHIEF DRAFTSMAN:	ENGINEER:	
CAM		WDS	
SUPERVISING ENGINEER:	ELEC. DESIGN ENGR.		
JPC			
ENGINEER OF ELECTRICITY:		E-07	
GEN'L SUPT. OF ELECTRICITY:			
DEPUTY COMMISSIONER:			
SIZE: 22" 34"	SCALE: 1" = 30'	DATE:	
DATE: 05/14/13		DWG. NO.:	
C.D.O.T. PROJECT NO.:		7 OF 19	

FOR CONDUIT AND FOUNDATION PLANS SEE DRAWING NO. E-06.
 FOR LIGHTING REMOVAL PLANS SEE DRAWING NO. E-08.