

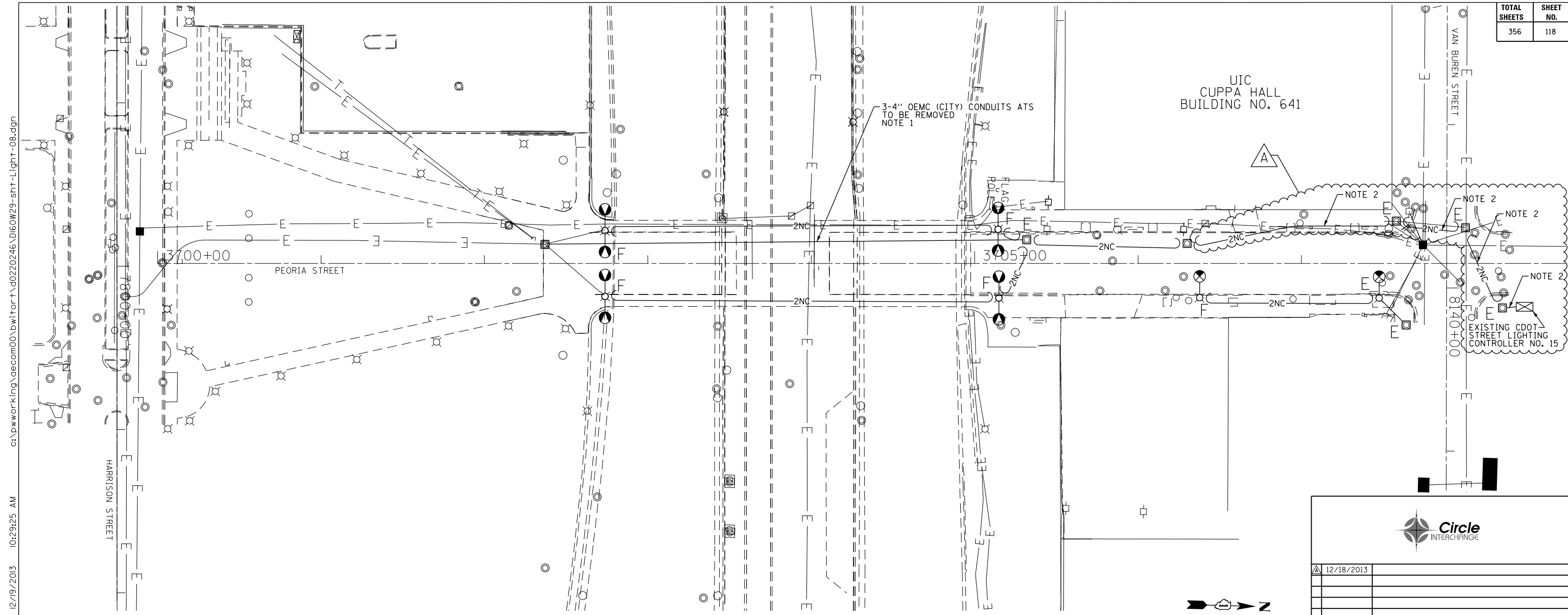
UIC  
CUPPA HALL  
BUILDING NO. 641

3-4" OEMC (CITY) CONDUITS AT S  
TO BE REMOVED  
NOTE 1

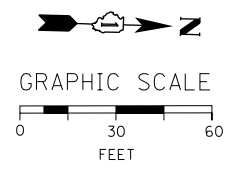
NOTE 2

NOTE

EXISTING CDOT  
STREET LIGHTING  
CONTROLLER NO. 15



ct:\pwworking\acom00\bwitort\d0220246\DI60W29-sht-Light-08.dgn  
 12/19/2013 10:29:25 AM



**NOTES:**

1. THE EXISTING CDOT CONDUITS ATTACHED TO THE UNDERSIDE OF THE BRIDGE STRUCTURE MAY CONTAIN ASBESTOS MATERIALS. THE CONDUITS SHALL BE REMOVED AND DISPOSED OF PROPERLY PRIOR TO THE BRIDGE DEMOLITION. CONDUITS TESTED AND CONFIRMED TO CONTAIN ASBESTOS MUST BE REMOVED IN ACCORDANCE WITH THE SPECIAL PROVISION "REMOVAL OF ASBESTOS CEMENT CONDUIT". ASBESTOS CONDUIT REMOVAL SHALL BE PAID FOR UNDER THE "REMOVAL OF ASBESTOS CEMENT CONDUIT" PAY ITEM.
2. REMOVE EXISTING LIGHTING CABLES FROM EXISTING CONDUIT TO BE REUSED. EXISTING CONDUIT TO BE REUSED SHALL BE RODDED AND CLEANED PRIOR TO INSTALLING THE NEW LIGHTING CABLES. SEE DRAWINGS E-06 AND E-07 FOR THE EXISTING CONDUITS TO BE REUSED. EXISTING CABLES IN EXISTING CONDUIT NOT BEING REUSED TO INSTALL NEW CABLES SHALL BE ABANDONED IN PLACE. THE CONTRACTOR WILL NOT BE PAID FOR REMOVING CABLES FROM EXISTING ABANDONED CONDUITS NOT BEING REUSED.

"E" EXISTING TO REMAIN  
 "F" REMOVE AND SALVAGE EXISTING STEEL POLE, LUMINAIRE(S), MAST ARM(S) AND BALLAST HOUSING. BREAKDOWN CONCRETE FOUNDATION COMPLETE.

FOR CONDUIT AND FOUNDATION PLANS  
 SEE DRAWING NO. E-06.  
 FOR LIGHTING CABLE AND EQUIPMENT  
 INSTALLATION PLANS SEE DRAWING NO. E-07.

DATE	REVISION
<b>CITY OF CHICAGO</b> DEPARTMENT OF TRANSPORTATION DIVISION OF ENGINEERING	
CONSULTANT:  <small>303 EAST WACKER DRIVE, SUITE 1400          CHICAGO, IL 60601-5276          PHONE: (312) 373-7700 FAX: (312) 373-6800</small>	
WORK ORDER NO.	DATE
COST ALLOCATION ACCOUNT	
APPROPRIATION ACCOUNT	MATERIAL LABOR
<b>PEORIA STREET          LIGHTING REMOVAL PLAN</b>	
<b>CITY OF CHICAGO</b> <small>DEPT. OF TRANSPORTATION          DIVISION OF ELECTRICAL OPERATIONS</small>	
DRAFTSMAN: CAM	ENGINEER: WDS
SUPERVISING ENGINEER: JPC	ELEC. DESIGN ENGR.
ENGINEER OF ELECTRICITY:	
GEN'L SUPT. OF ELECTRICITY:	
DEPUTY COMMISSIONER:	
SIZE: 22"   34"	SCALE: 1" = 30'
DATE: 05/14/13	DATE:
C.D.O.T. PROJECT NO.:	DWG. NO.:

E-08