



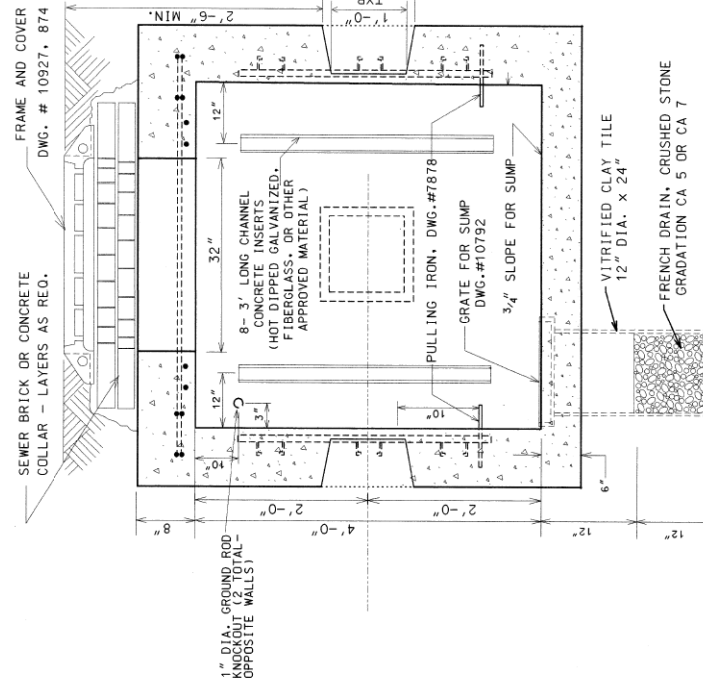
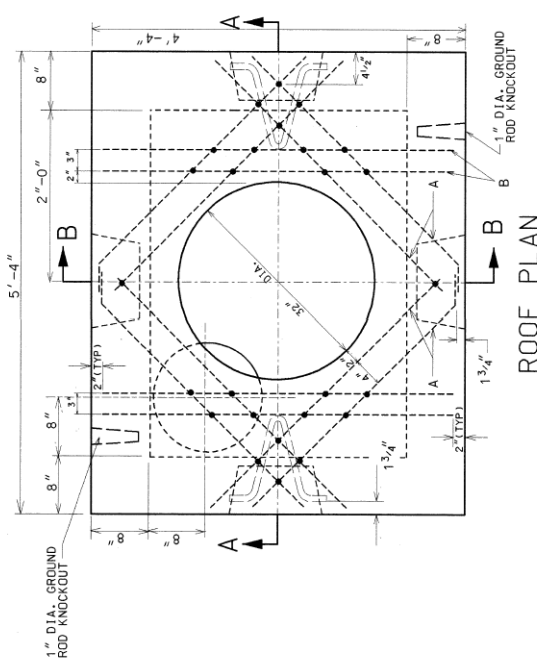
D160W29-sht-Light-14	DESIGNED - WDS	REVISED -
USER NAME = BAWtor1	DRAWN - CAM	REVISED -
PLOT SCALE = 2.0000' / in.	CHECKED - WDS	REVISED -
PLOT DATE = 10/28/2013	DATE - 10/30/2013	REVISED -

STATE OF ILLINOIS  
DEPARTMENT OF TRANSPORTATION

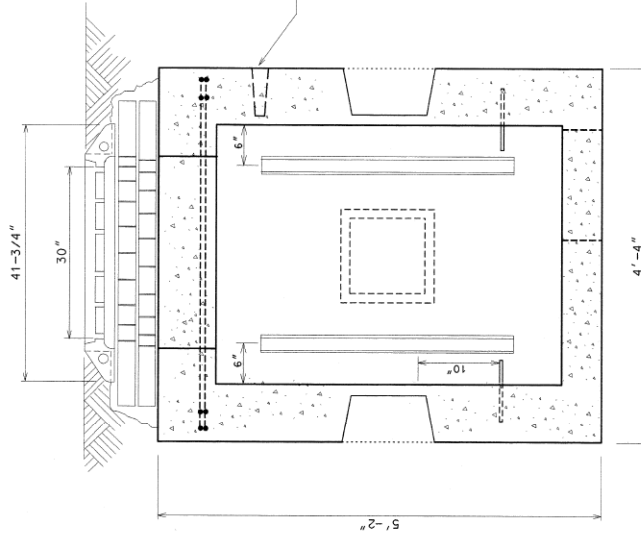
MISCELLANEOUS ELECTRICAL DETAILS

SCALE: N.T.S. SHEET 14 OF 19 SHEETS STA. TO STA.

F.A.I. R.T.E.	SECTION	COUNTY	TOTAL SHEETS	SHEET NO.
90/94/290	2013-011R	COOK	356	124
CONTRACT NO. 60W29				
ILLINOIS FED. AID PROJECT				



SECTION A-A



SECTION B-B

EXCAVATION (CONSTRUCTION INFORMATION)

COMPLETE MANHOLE	5.0 CU. YDS.
NEW ROOF ONLY	2.0 CU. YDS.
SHEETING MANHOLE	150.0 50' FT.

#5 REINFORCING BARS

BAR LENGTH	NO. OF BARS	TOTAL FT.
A 2'-9"	8	22'-0"
B 4'-0"	4	16'-0"

MATERIALS FOR ROOF ONLY

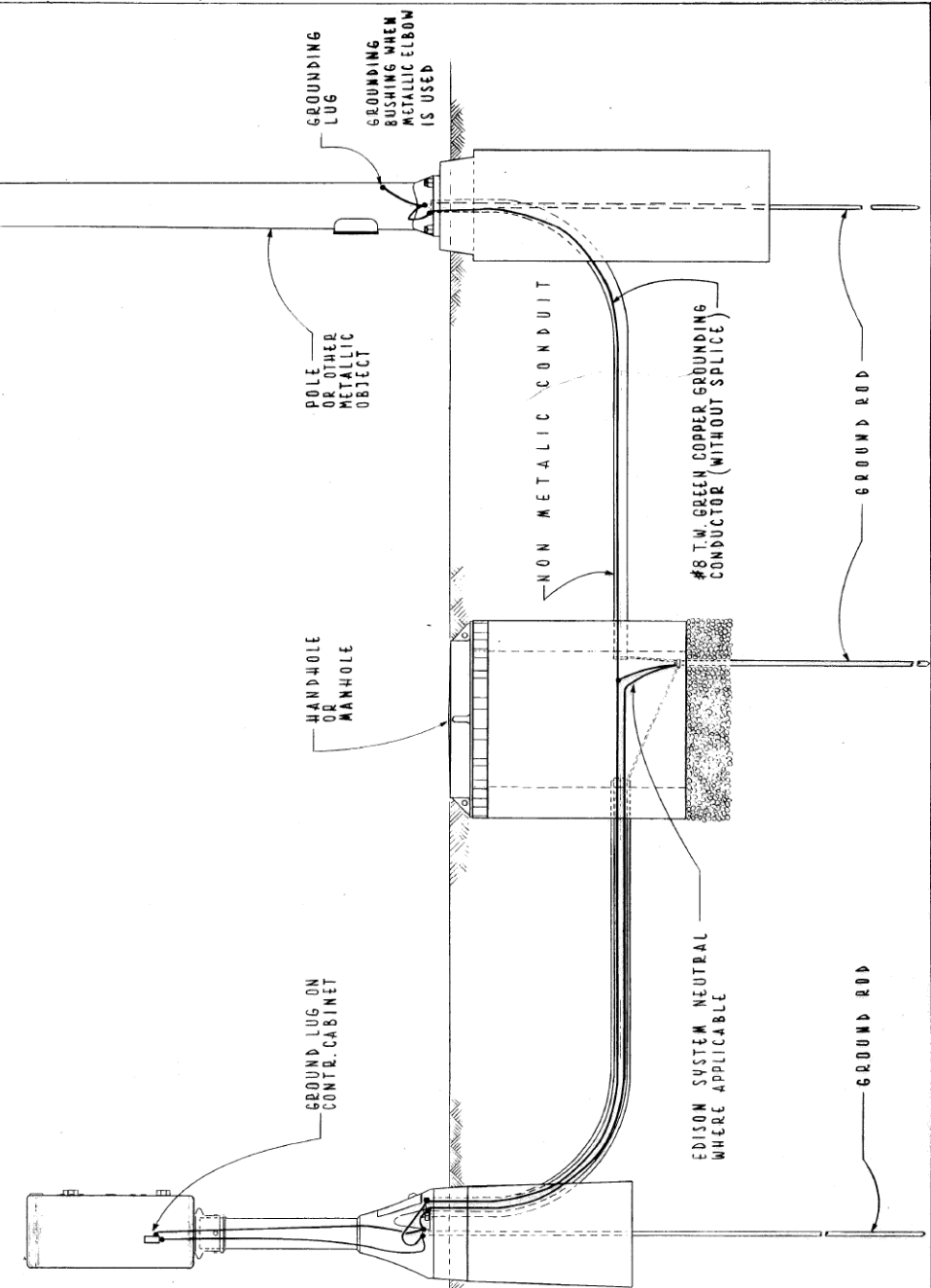
CONCRETE	0.5 CU. YDS.
REINFORCING BARS #5	38'

DRG.	MATERIAL	CODE	SIZE	No. Req.
	FORM FOR MANHOLE	17-6874-6000	3'x4'x4'	1
	CONDUIT END BELL	17-6445-3320	AS REQ.	
	TILE - SEWER	39-4030-3200	12"/24"	
	SLAB BOLSTER	20-5472-9650	3/4" x 38'	
	TIE WIRE	13-9938-6106	#20GA.35'	
7878	PULLING IRON	02-4483-6370	3/4" x 2	
	CONCRETE	05-3267-2940	3 CU. YDS.	
	SEWER BRICK	05-1452-9720	370. 50	
10792	GRATE FOR SUMP	02-4368-7100	15" x 15" x 1	
	GROUND ROD	09-7796-9200	3/4" x 10'	
	GROUND ROD CLAMP	09-2636-3240	3/4" x 1	
	CRUSHED STONE	05-9057-5471	3/4" ONE SIDE	
874	MANHOLE FRAME	02-4299-5524	30" x 1	
10927	MANHOLE COVER	02-4574-5040	30" x 1	
	CONC. CHANNEL INSERT	02-4574-5040	3" x 8	

- NOTES:
1. PRECAST MANHOLES MUST BE PROVIDED WITH CHANNEL INSERTS, PULLING IRONS, AND CONDUIT KNOCK-OUTS.
  2. ALL CONCRETE MUST BE PORTLAND CEMENT CONCRETE MEETING LOCAL REQUIREMENTS FOR CONCRETE FOR PRE-CAST STRUCTURES, OR CLASS S1 CONCRETE FOR CAST-IN-PLACE STRUCTURES.
  3. REINFORCING BARS MUST MEET ASTM A615 GRADE 60.

8/21/02 SUPERCEDES DWG. 729 DATED JAN 12, 1996	REVISION
1/12/96 SUPERCEDES DWG. 729 DATED NOV. 21, 1973	
DATE	REVISION
<b>3' x 4' x 4'</b>	
<b>CONCRETE MANHOLE WITH 30" FRAME AND COVER</b>	
CITY OF CHICAGO DEPT. OF STREETS & SANITATION BUREAU OF ELECTRICITY DIVISION OF ELECTRICAL ENGINEERING	
DRAFTSMAN: R. CARTER	DRAWING NO. 729
ELECTRICAL DESIGN ENGINEER: B. GARNSEY	
ENGINEER: B. GARNSEY	
GENERAL SUPERINTENDENT: [Signature]	
DEPUTY SUPERINTENDENT: [Signature]	
SCALE: NONE	DATE: 9/21/02
SIZE: 11" x 22"	

NOTE: TERMINATE ALL METALLIC CONDUIT WITH GROUNDING BUSHING & GROUND TO GROUND ROD WHEN METALLIC CONDUIT IS USED DELETE GROUNDING CONDUCTOR.



TYPICAL GROUNDING METHODS FOR BUREAU OF ELECTRICITY EQUIPMENT

CITY OF CHICAGO DEPT. OF STREETS & SANITATION BUREAU OF ELECTRICITY DIVISION OF ELEC. ENGINEERING			
REVISED	DRAWN: E. GERULIS	CHECKED: M. SHINE	ENGINEER: J. O'CONNOR
A	ENG. OF ELEC.		DWG. NO. 736
B	SUPT. OF CONST.		
C	PER. OF CONST.		
D	PER. OF CONST.		
E	PER. OF CONST.		
F	PER. OF CONST.		
SIZE: 8 1/2" x 14"			SCALE: 1" = 10'
DATE: 5-17-76			