



DI60W29-sht-Light-17  
 USER NAME = BAW:tor t  
 PLOT SCALE = 2.0000' / in.  
 PLOT DATE = 10/28/2013

DESIGNED - WDS  
 DRAWN - CAM  
 CHECKED - WDS  
 DATE - 10/30/2013

REVISED -  
 REVISED -  
 REVISED -  
 REVISED -

STATE OF ILLINOIS  
 DEPARTMENT OF TRANSPORTATION

MISCELLANEOUS ELECTRICAL DETAILS

SCALE: N.T.S. SHEET 17 OF 19 SHEETS STA. TO STA.

F.A.I. R.T.E.	SECTION	COUNTY	TOTAL SHEETS	SHEET NO.
90/94/290	2013-011R	COOK	356	127
CONTRACT NO. 60W29			ILLINOIS FED. AID PROJECT	

INSTALLATION NOTES

- STEP 1. COAT EXPOSED PORTION OF ANCHOR BOLTS WITH APPROVED ANTI RUSTING GREASE ("60" OR EQUAL).
- STEP 2. INSTALL LOWER LEVELLING NUTS & WASHERS, SET AT APPROPRIATE LEVEL FOR ANCHOR BOLT.
- STEP 3. MOUNT POLE OR PEDESTAL, ATTACH TOP WASHERS AND NUTS HAND TIGHT.
- STEP 4. TIGHTEN CONDUIT BUSHING, ALL MASTARMS, STREET LIGHTS, TO POLE & TIGHTEN ALL NUTS.
- STEP 5. ATTACH NUT COVERS WHERE REQUIRED.
- STEP 6. DO NOT SCROUT IN SPACES BETWEEN BOTTOM OF POLE & TOP OF FOUNDATION. TOP OF FOUNDATION OR SURFACE OF SIDEWALK MUST BE LEFT CLEAN AND SMOOTH.
- STEP 7. NO "KANE" IS TO BE LEFT.

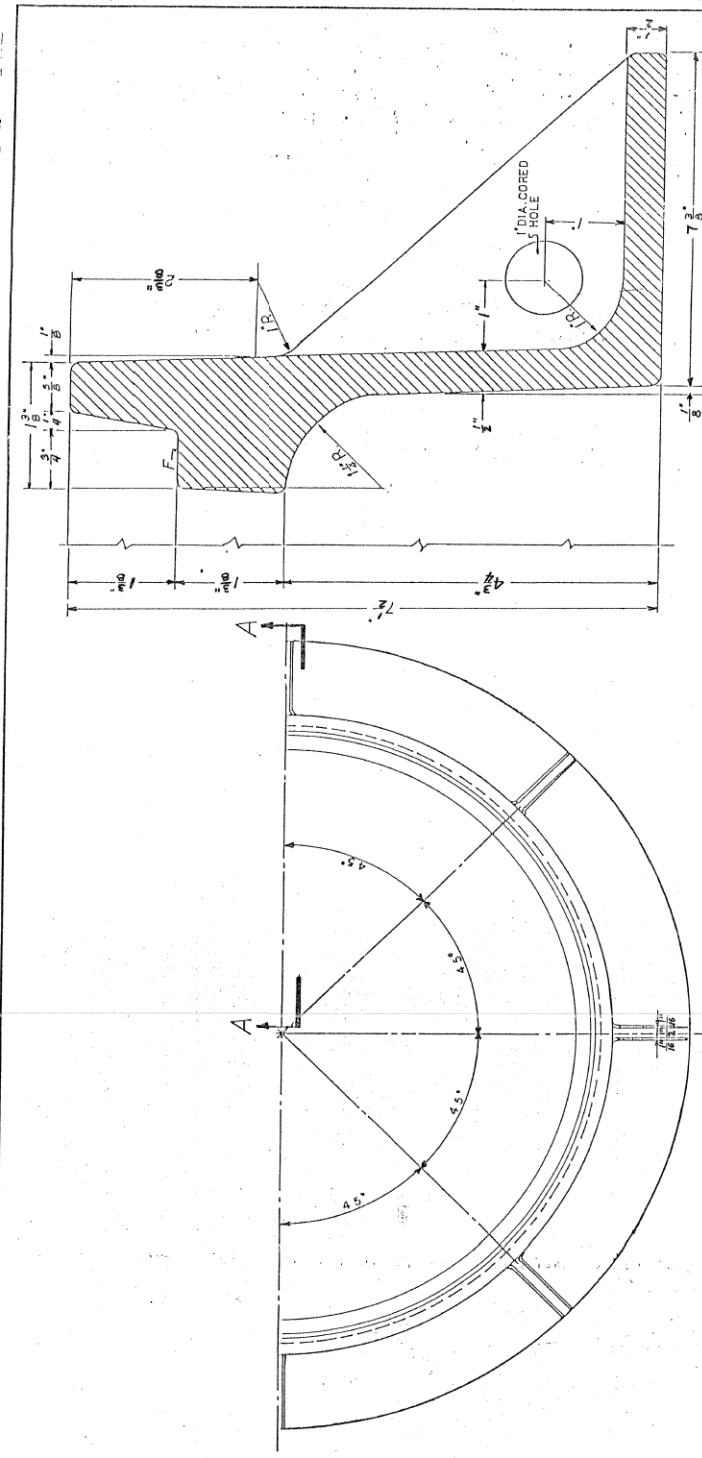
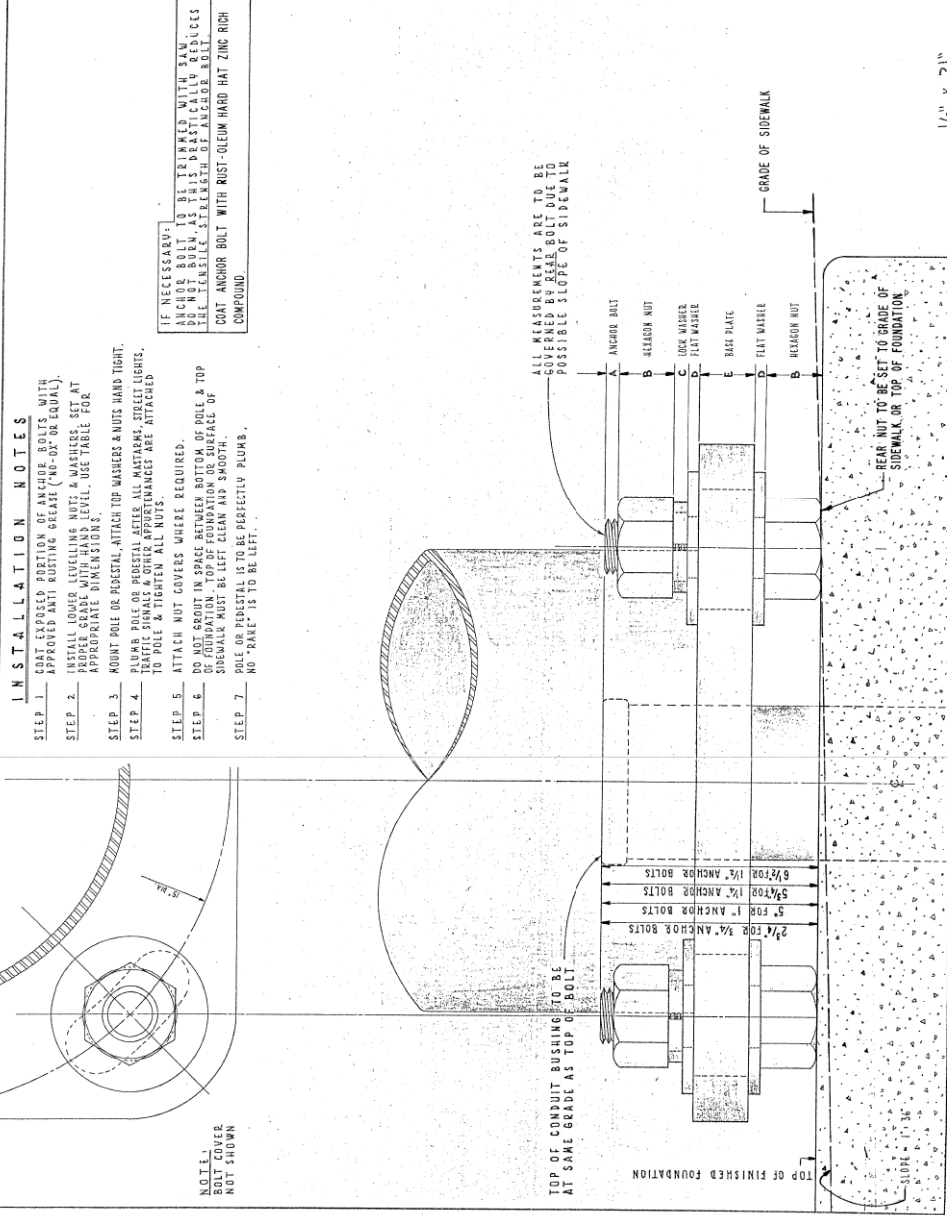
IF NECESSARY TO BE TIGHTENED WITH RAIN ANCHOR BOLT AS THIS PRACTICALLY REDUCES THE TENSILE STRENGTH OF ANCHOR BOLT. COAT ANCHOR BOLT WITH RUST-OLEUM HARD HAT ZINC RICH COMPOUND.

T A B L E

ANCHOR BOLT SIZE	POLL GAUGES	ALUM. PEB.
1" 1/4"	1 1/2"	3/4"
7/8"	3/4"	3/4"
3/4"	7/8"	3/4"
1/2"	1 1/8"	7/8"
1"	1 1/2"	3/4"
1/2"	3/4"	3/4"
5/8"	3/4"	3/4"
1"	1 1/2"	5/8"
1"	1 1/2"	5/8"

CONSTRUCTION METHOD FOR "DOUBLE-NUT" INSTALLATION OF POLES AND PEDESTALS

CITY OF CHICAGO  
 DEPT. OF ELECTRICAL ENGINEERING  
 DIVISION OF ELECTRICAL ENGINEERING  
 837  
 16" x 21"



TYPICAL SECTION THRU FRAME

HALF PLAN  
 MATERIAL - CAST IRON  
 ESTIMATED WEIGHT APPROX. 250 LB.  
 F - DENOTES BEARING SURFACE SHALL BE MACHINED SMOOTH.

HALF ELEVATION  
 HALF SECTION AA

COMMODITY CODE NO.

30" CIRCULAR STREET MANHOLE FRAME

CITY OF CHICAGO  
 DEPT. OF ELECTRICAL ENGINEERING  
 DIVISION OF ELECTRICAL ENGINEERING  
 874  
 SUPERSEDES DRC # 10926  
 DATED 4-6-35