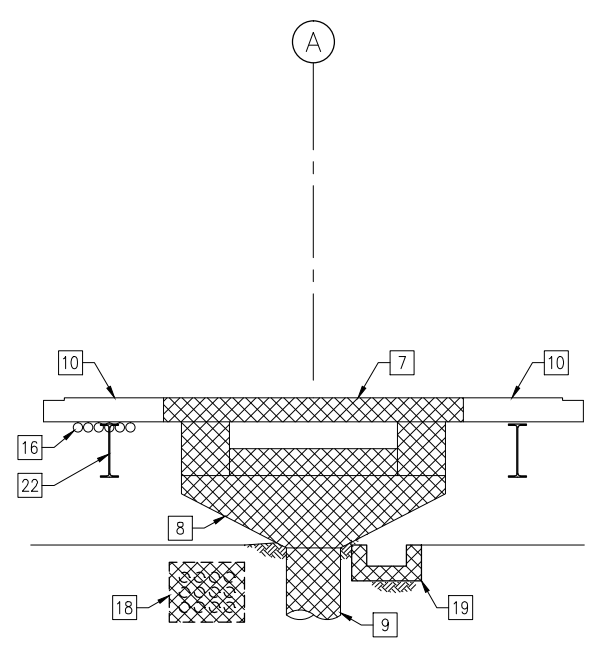
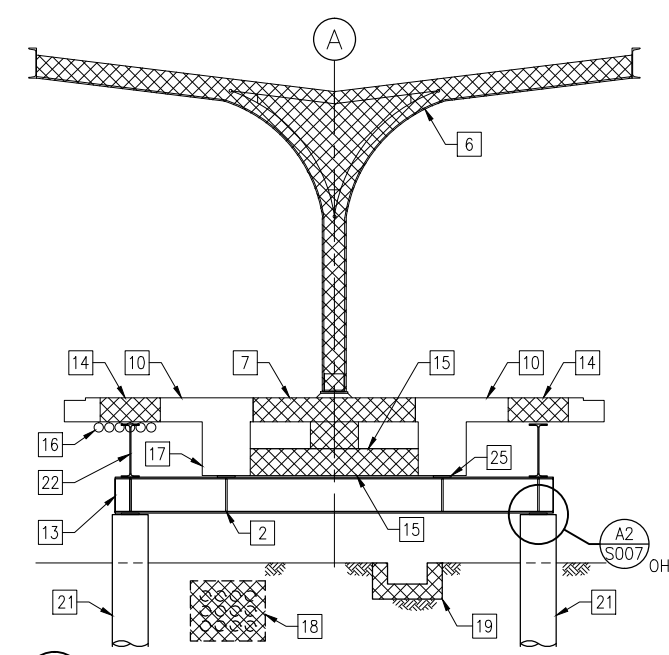


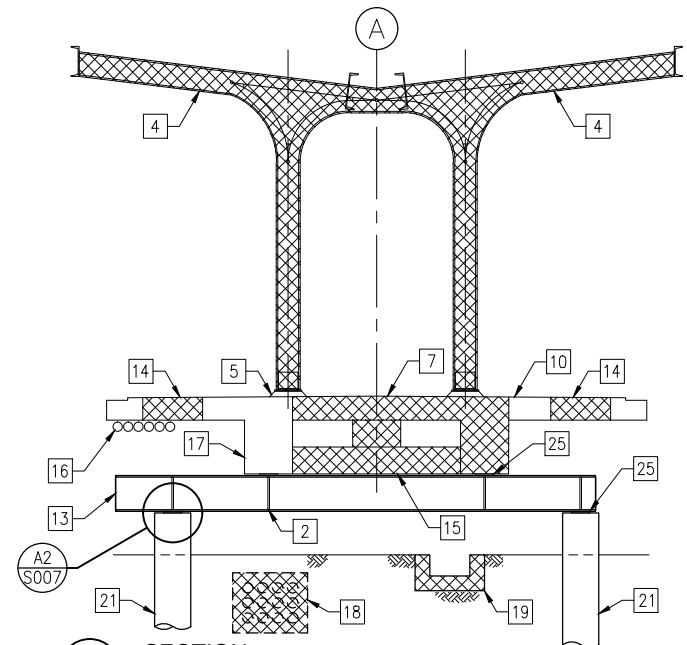
C1 SECTION AT GRID 12
3/8" = 1'-0"



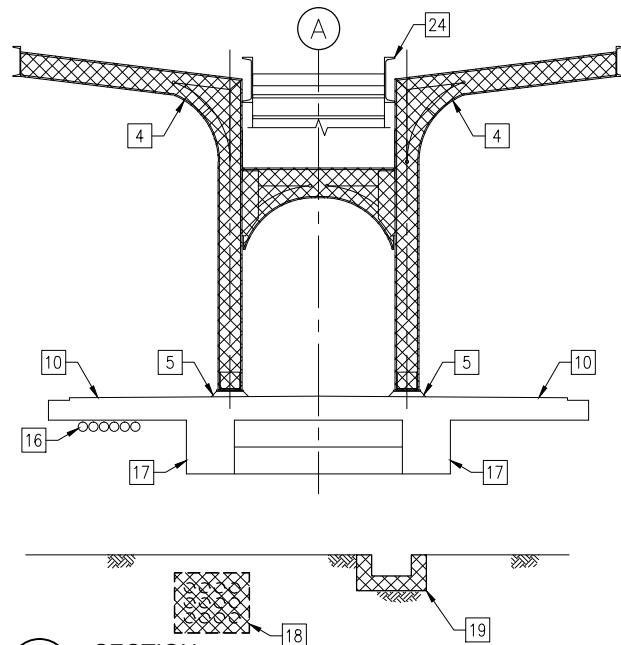
C2 SECTION AT GRID 12.5
3/8" = 1'-0"



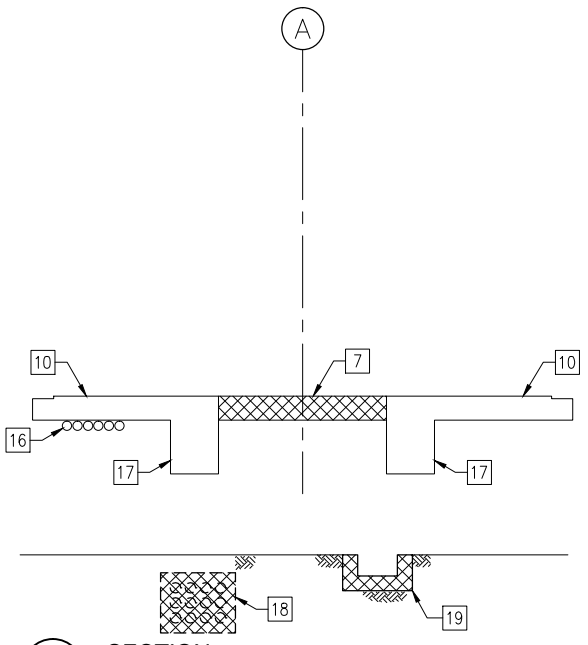
C3 SECTION AT GRID 13
3/8" = 1'-0"



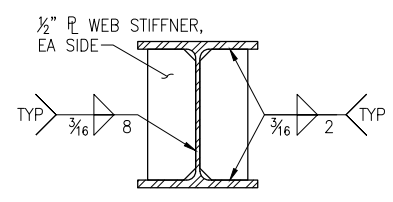
B1 SECTION
3/8" = 1'-0"



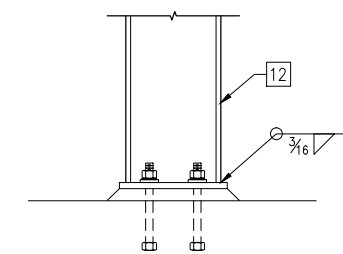
B2 SECTION
3/8" = 1'-0"



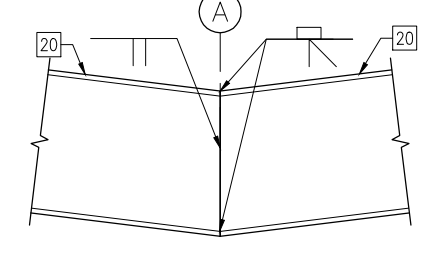
B3 SECTION
3/8" = 1'-0"



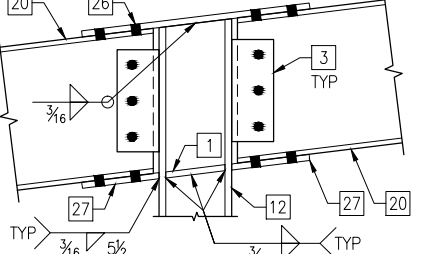
B4 SECTION
1-1/2" = 1'-0"



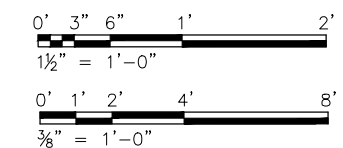
A1 SECTION
1 1/2" = 1'-0"



A2 SECTION
1 1/2" = 1'-0"



A3 SECTION
1 1/2" = 1'-0"



SHEET NOTES
1. ALL EXISTING DIMENSIONS AND ELEVATIONS ARE SHOWN FOR REFERENCE ONLY AND SHALL BE VERIFIED PRIOR TO COMMENCEMENT OF CONSTRUCTION AND/OR FABRICATION OF ANY MEMBERS TO DETERMINE ANY CRITICAL DIMENSIONS THAT MAY BE DEPENDENT ON THE EXISTING STRUCTURE.

- KEYED NOTES:**
1. $\frac{1}{2}$ " WEB STIFFENER AT EACH SIDE OF POST.
 2. $\frac{1}{2}$ " WEB STIFFENER, EACH SIDE OF EACH BEARING LOCATION. SEE B4/S006.
 3. SEE B1/S600 FOR TYPICAL SHEAR CONNECTION.
 4. REMOVE EXISTING DOUBLE ALUMINUM COLUMN BENT AND ROOF DECK.
 5. REMOVE EXISTING ANCHOR BOLTS. CUT BELOW SURFACE AND PATCH CONCRETE.
 6. REMOVE EXISTING SINGLE ALUMINUM COLUMN BENT AND ROOF DECK.
 7. REMOVE EXISTING 8" CONCRETE PLATFORM SLAB
 8. REMOVE EXISTING CONCRETE HAUNCH.
 9. REMOVE EXISTING CONCRETE CAISSON TO 6" BELOW NEW ELEVATOR PIT MAT FOUNDATION.
 10. EXISTING 8" PLATFORM SLAB TO REMAIN.
 11. SHORE EXISTING CANOPY PURLINS BEYOND UNTIL NEW DOUBLE COLUMN BENT HAS BEEN CONSTRUCTED AT GRID 13.
 12. TEMPORARY W8x24 SHORING POST FOR EXISTING CANOPY ROOF PURLINS, BEYOND.
 13. W12x40 TEMPORARY SHORING BEAM. LOCATIONS AS INDICATED ON SHEET S-004.
 14. CUT EXISTING CONCRETE PLATFORM SLAB TO PROVIDE ACCESS FOR INSTALLATION OF THE MICROPILES. COVER EXPOSED OPENING WITH $\frac{1}{2}$ ", OVERSIZED STEEL PLATE IF HOLE IS LEFT OPEN DURING OPERATING HOURS OF TRAINS.
 15. REMOVE EXISTING CROSS BEAM UNDER COLUMN.
 16. SEE ELECTRICAL DRAWINGS FOR REROUTING OF EXISTING ELECTRICAL CONDUITS.
 17. EXISTING LONGITUDINAL PLATFORM BEAM TO REMAIN, BOTH SIDES OF PLATFORM.
 18. EXISTING DUCT BANK TO BE REMOVED. SEE ELECTRICAL DRAWINGS FOR DUCT BANK CRITERIA.
 19. EXISTING DRAINAGE TRENCH TO BE REMOVED.
 20. W12x26 SHORING BEAM. DETERMINE AND MATCH EXISTING ROOF SLOPE. SEE S-600 FOR TYPICAL BEAM SHEAR CONNECTION.
 21. PROVIDE MICROPILES AT EACH END OF EACH SHORING BEAM WITH 32KIPS ASD CAPACITY.
 22. PROVIDE W18x35 TEMPORARY SHORING BEAM AT EACH SIDE OF EXISTING PLATFORM BETWEEN GRIDS 12 AND 13 ONLY. PROVIDE SHIMS AS REQUIRED.
 23. MAINTAIN A MINIMUM CLEARANCE OF 4'-6" DURING CONSTRUCTION.
 24. EXISTING STAIRS TO BE REMOVED, STORED AND REINSTALLED.
 25. 8"x8"x $\frac{1}{4}$ " FIBER REINFORCED ELASTOMERIC BEARING PADS AT ALL CONCRETE TO STEEL BEARING INTERFACES.
 26. $\frac{1}{2}$ "x6 x 1-9 WITH (4) $\frac{3}{4}$ " ϕ BOLTS, EACH END, 3 $\frac{1}{2}$ " GAGE, 3" SPACING, 1 $\frac{1}{4}$ " EDGE DISTANCE.
 27. $\frac{1}{2}$ "x6 x 0-6 $\frac{1}{2}$ WITH (4) $\frac{3}{4}$ " ϕ BOLTS, EACH SIDE, 3 $\frac{1}{2}$ " GAGE, 3" SPACING, 1 $\frac{1}{4}$ " EDGE DISTANCE.