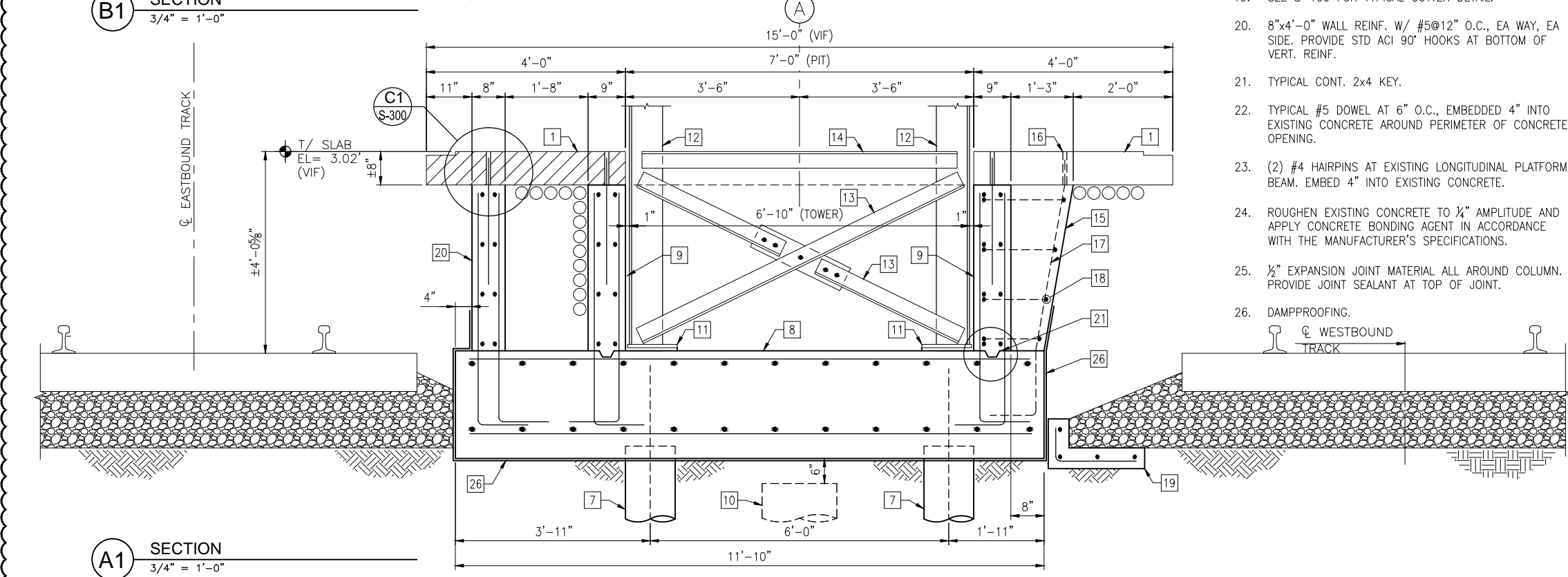


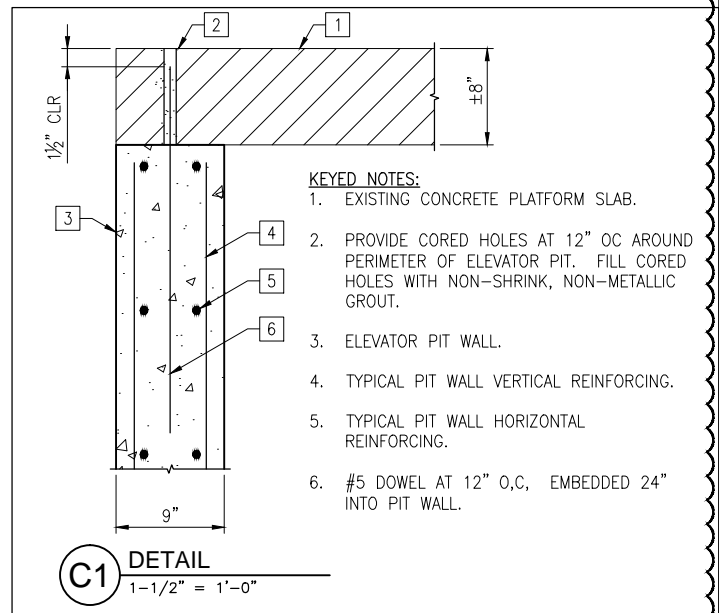
B1 SECTION
3/4" = 1'-0"



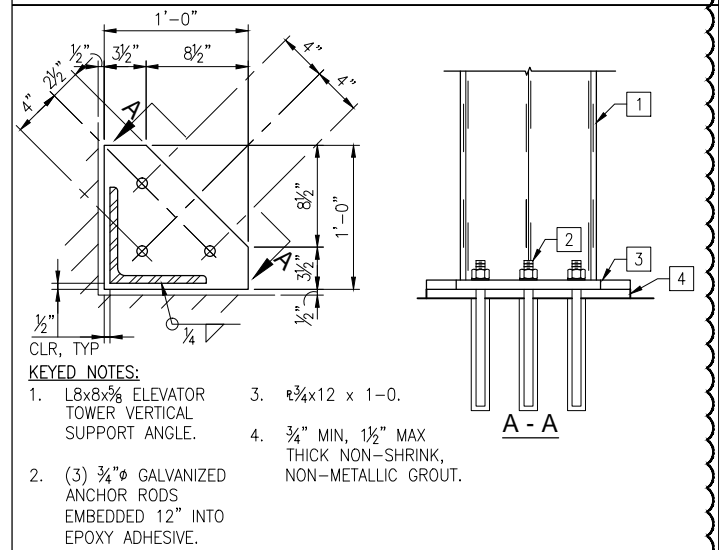
A1 SECTION
3/4" = 1'-0"

- KEYED NOTES:**
- EXISTING CONCRETE PLATFORM SLAB.
 - EXISTING LONGITUDINAL PLATFORM BEAM.
 - NEW WF STEEL COLUMN, SEE PLAN FOR SIZE.
 - INFILL CONCRETE.
 - #5 AT 12" OC VERT REINF + (3) #5 HORIZ REINF AT EACH SIDE OF CONCRETE INFILL. PROVIDE STD ACI 90° HOOKS AT TOP OF VERT REINF AND AT EACH END OF HORIZ REINF.
 - PC-2 PILE CAP.
 - SEE PLAN FOR MICROPILE LAYOUT.
 - ELEVATOR MAT SLAB. REINF. W/ #6 AT 12" O.C., EA. WAY, TOP AND BOTTOM.
 - 9" THICK ELEVATOR PIT WALL. REINF. WALLS W/ #5 AT 12" O.C., EA. WAY, EA. SIDE. PROVIDE STANDARD ACI 90° HOOKS AT BOTTOM OF VERT REINF. SEE DETAIL A1/S-302 FOR TYPICAL HORIZ REINF LAYOUT.
 - EXISTING DRILLED SHAFT. REMOVE TO 6" BELOW BOTTOM OF NEW ELEVATOR MAT SLAB.
 - 2x4x12 x 1-0. SEE DETAIL B2/S-300.
 - L8x8x5/8 ELEVATOR TOWER VERT SUPPORT ANGLE. (1) REQUIRED AT EACH CORNER OF ELEVATOR TOWER.
 - L4x4x5/8 ELEVATOR TOWER DIAG BRACE ANGLE.
 - L4x4x5/8 ELEVATOR TOWER HORIZ BRACE ANGLE.
 - 8" WING WALL AT NORTH WALL OF ELEVATOR PIT.
 - (1) #5 DOWEL AT WING WALL C. EMBED DOWEL 24" INTO WING WALL BELOW. ANCHOR INTO EXISTING SLAB SIMILAR TO DETAIL C1/S-300.
 - (2) #5 WITH STD 135° ACI HOOKS AT THE BOTTOM.
 - #4 CLOSED TIES, (4) REQUIRED, EQUALLY SPACED.
 - SEE S-100 FOR TYPICAL GUTTER DETAIL.
 - 8"x4'-0" WALL REINF. W/ #5@12" O.C., EA WAY, EA SIDE. PROVIDE STD ACI 90° HOOKS AT BOTTOM OF VERT. REINF.
 - TYPICAL CONT. 2x4 KEY.
 - TYPICAL #5 DOWEL AT 6" O.C., EMBEDDED 4" INTO EXISTING CONCRETE AROUND PERIMETER OF CONCRETE OPENING.
 - (2) #4 HAIRPINS AT EXISTING LONGITUDINAL PLATFORM BEAM. EMBED 4" INTO EXISTING CONCRETE.
 - ROUGHEN EXISTING CONCRETE TO 1/4" AMPLITUDE AND APPLY CONCRETE BONDING AGENT IN ACCORDANCE WITH THE MANUFACTURER'S SPECIFICATIONS.
 - 1/2" EXPANSION JOINT MATERIAL ALL AROUND COLUMN. PROVIDE JOINT SEALANT AT TOP OF JOINT.
 - DAMPPOOFING.

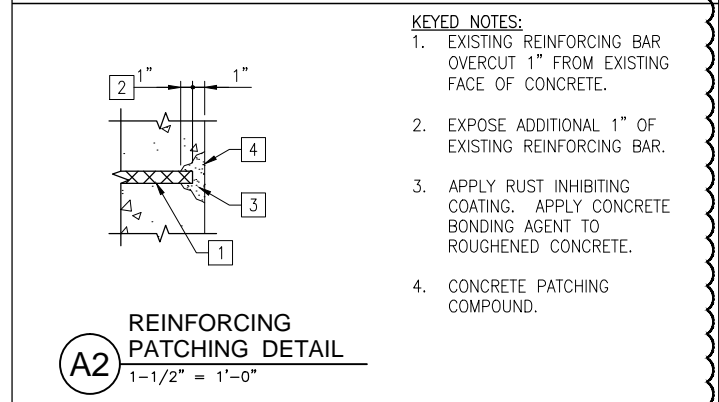
- SHEET NOTES:**
- ALL EXISTING DIMENSIONS AND ELEVATIONS ARE SHOWN FOR REFERENCE ONLY AND SHALL BE VERIFIED PRIOR TO COMMENCEMENT OF CONSTRUCTION AND/OR FABRICATION OF ANY MEMBERS TO DETERMINE ANY CRITICAL DIMENSIONS THAT MAY BE DEPENDENT ON THE EXISTING STRUCTURE.



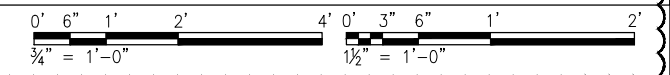
C1 DETAIL
1-1/2" = 1'-0"



B2 BASE PLATE DETAIL
1-1/2" = 1'-0"



A2 REINFORCING PATCHING DETAIL
1-1/2" = 1'-0"



USER NAME = MAC	DESIGNED KLT	REVISED A 1/20/2014
CHECKED AB	REVISIONS	
PLOT SCALE =	DRAWN MAC	REVISED
PLOT DATE = 10/28/13	CHECKED KLT	REVISED

STATE OF ILLINOIS
DEPARTMENT OF TRANSPORTATION

PEORIA STREET STATION
FOUNDATION SECTIONS AND DETAILS
SHEET NO. S-300 OF 117 SHEETS

MUN 2090	SECTION 2013-011R	COUNTY COOK	TOTAL SHEETS 356	SHEET NO. 207
CONTRACT NO. 60W29				ILLINOIS FED. AID PROJECT FED. AID PROJECT