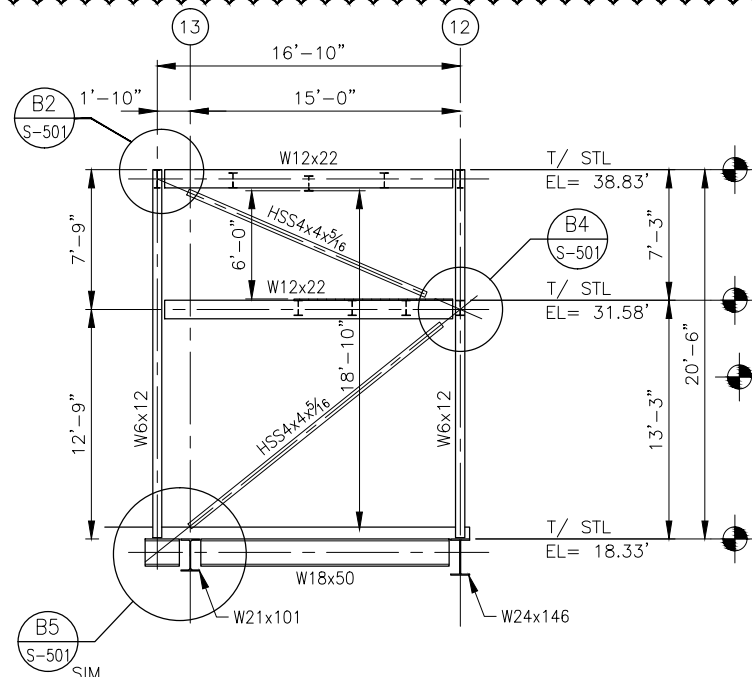
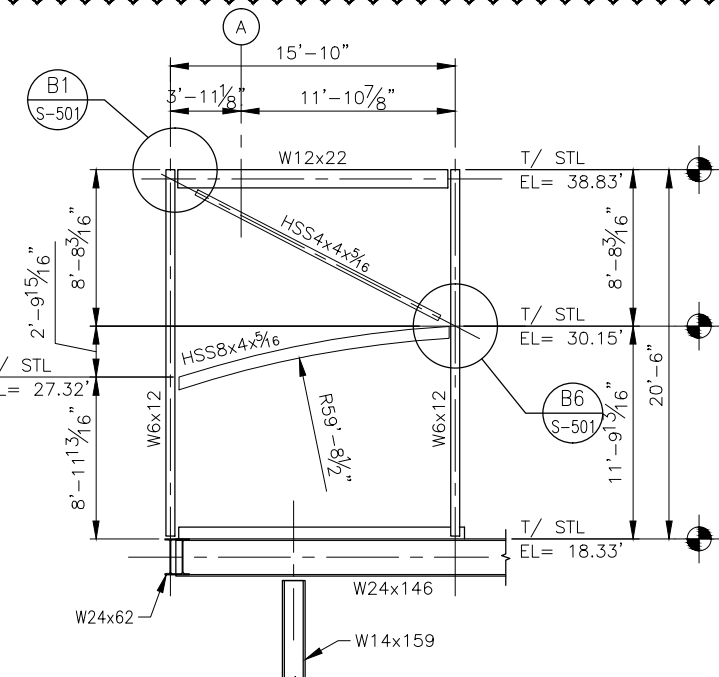


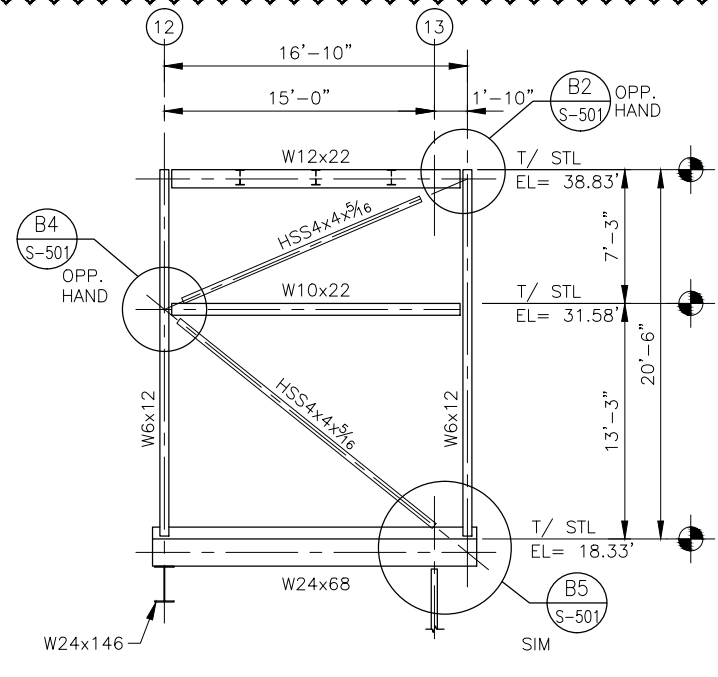
C1 WEST ELEVATION
3/16" = 1'-0"



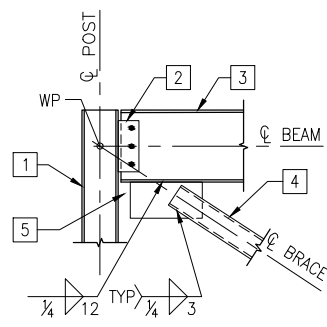
C2 NORTH ELEVATION
3/16" = 1'-0"



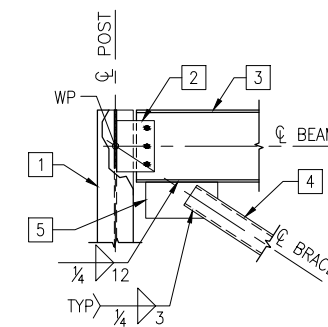
C3 EAST ELEVATION
3/16" = 1'-0"



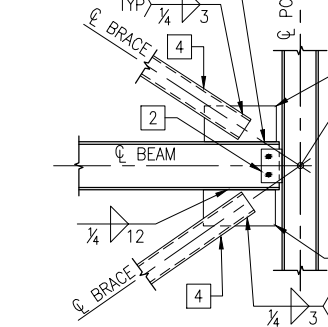
C4 SOUTH ELEVATION
3/16" = 1'-0"



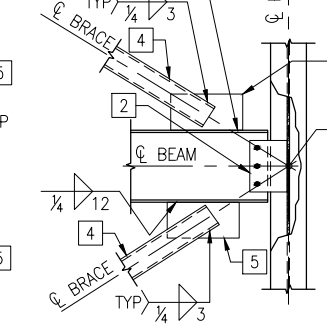
B1 DETAIL
3/4" = 1'-0"



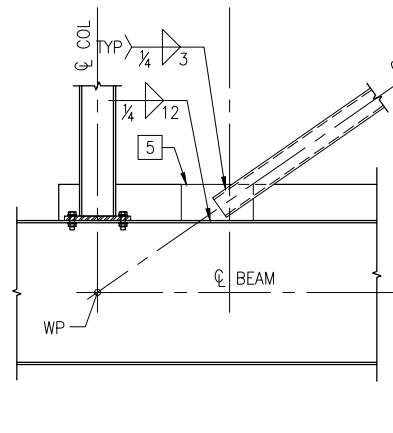
B2 DETAIL
3/4" = 1'-0"



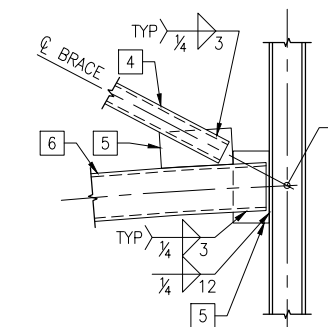
B3 DETAIL
3/4" = 1'-0"



B4 DETAIL
3/4" = 1'-0"

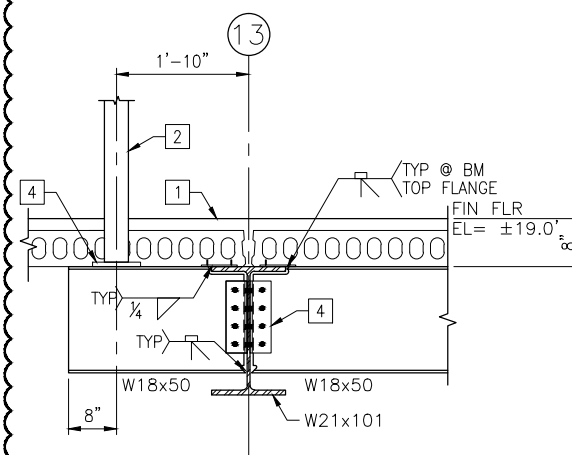


B5 DETAIL
3/4" = 1'-0"



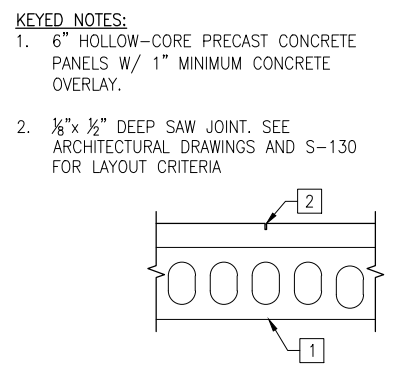
B6 DETAIL
3/4" = 1'-0"

- KEYED NOTES:**
1. W6X12 POST.
 2. SEE B1/S-600 FOR TYPICAL SHEAR CONNECTION.
 3. W12X22 ROOF BEAM.
 4. HSS4X4X3/16 DIAGONAL BRACE SPLIT AT PLATE.
 5. PL 1/2 X 8 X 1-0.
 6. HSS8X4X3/16.



A1 SECTION
3/4" = 1'-0"

- KEYED NOTES:**
1. 6" HOLLOW-CORE PRECAST CONCRETE PANELS W/ 1" MINIMUM CONCRETE OVERLAY.
 2. W6X12 VERTICAL CORNER COLUMN FOR ELEVATOR ENCLOSURE.
 3. SEE C1/S-600 FOR TYPICAL BEAM TO BEAM CONNECTION.
 4. SEE C2/S-500 FOR TYPICAL POST BASE PLATE.



A2 SECTION
1 1/2" = 1'-0"

- KEYED NOTES:**
1. 6" HOLLOW-CORE PRECAST CONCRETE PANELS W/ 1" MINIMUM CONCRETE OVERLAY.
 2. 1/8" X 1/2" DEEP SAW JOINT. SEE ARCHITECTURAL DRAWINGS AND S-130 FOR LAYOUT CRITERIA



USER NAME = MAC	DESIGNED KLT	REVISED A 1/20/2014
PLOT SCALE =	CHECKED AB	REVISED ---
PLOT DATE = 10/28/13	DRAWN MAC	REVISED ---
	CHECKED KLT	REVISED ---

STATE OF ILLINOIS
DEPARTMENT OF TRANSPORTATION

PEORIA STREET STATION
STATION FLOOR SECTIONS AND DETAILS
SHEET NO. S-501 OF 117 SHEETS

MUN 2090	SECTION 2013-011R	COUNTY COOK	TOTAL SHEETS 356	SHEET NO. 211
				CONTRACT NO. 60W29
ILLINOIS FED. AID PROJECT FED. AID PROJECT				

