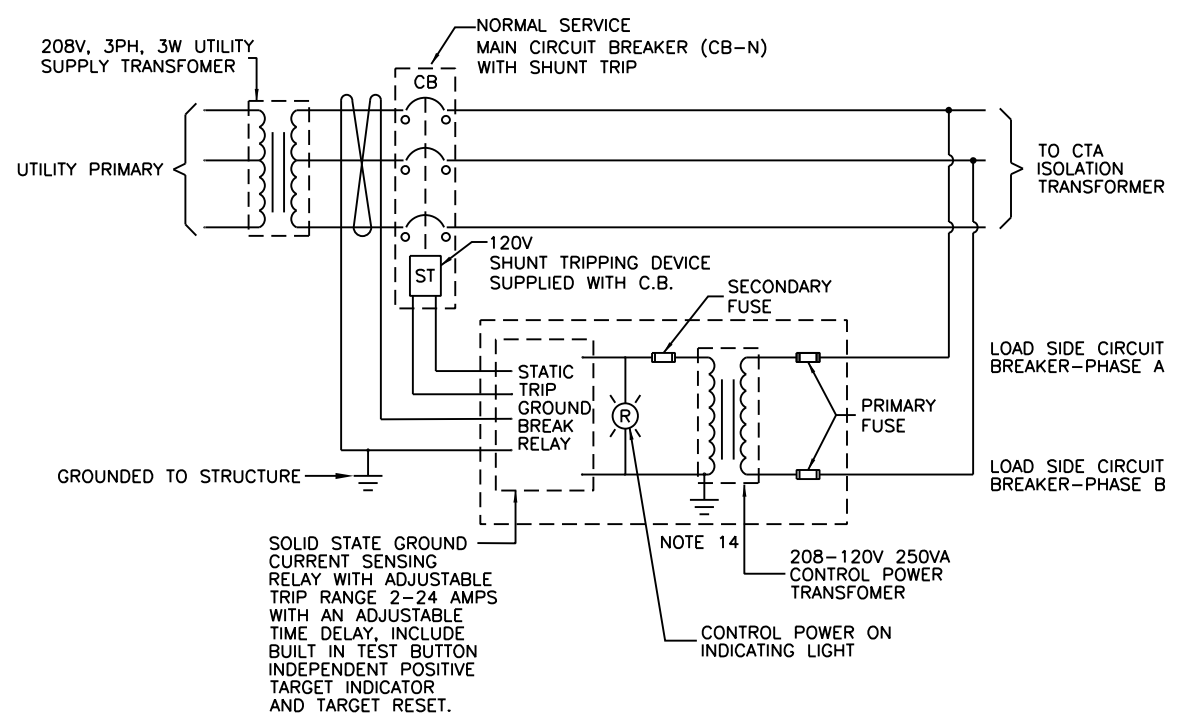


**NOTES:**

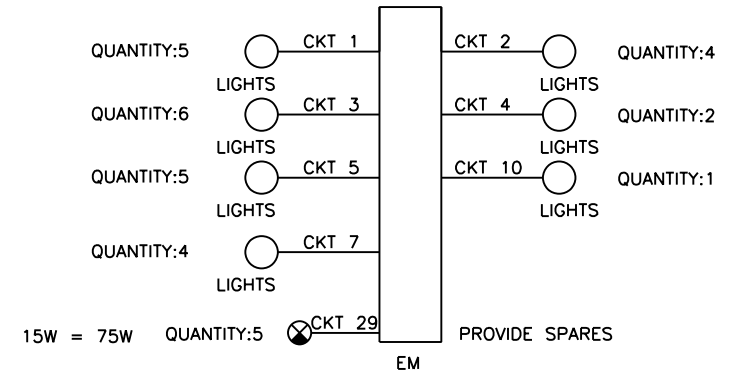
1. SEE PANEL SCHEDULES ON SHEET 277
2. FIRE ALARM PANEL IS TO BE GROUNDED TO CT-N GROUND BUS BAR.
3. EXOTHERMIC CONNECTED GROUNDING CONDUCTOR TO STRUCTURE.
4. KEY INTERLOCKING TO PREVENT CONCURRENT OPERATION OF COMED POWER AND CTA PORTABLE GENERATOR.
5. ALL EQUIPMENT IS LOCATED IN ELECTRICAL ROOM NO. 007 UNLESS OTHERWISE NOTED.
6. LOCATED IN COMM ROOM NO. 006.
7. LOCATED IN UNPAID AREA.
8. LOCATED IN ELEVATOR MACH ROOM.
9. SEE SHEETS 279 AND 280 FOR CONDUIT/CABLE SCHEDULE.
10. CT-N, MDP, UPS, BATTERY AND T1 TO BE INSTALLED ON A 4" CONCRETE PAD WITH A 4" LIP. SEE SPECIFICATIONS.
11. ALL PANEL BOARDS ARE TO HAVE A MINIMUM RATING OF 65KAIC. SERIES RATED BREAKERS ARE NOT ALLOWED.
12. LOCATED IN UPS ROOM NO. 007A.
13. CONTINUED ON SHEET 282 .
14. TRANSFORMER GROUND TO BE CONNECTED TO STRUCTURE.

15. PROVIDE EXTERNALLY MOUNTED 100KA RATED TVSS UNIT. CONNECTED TO PANEL AND LOCATED ADJACENT TO ITS CONNECTED PANEL.

**1 ELECTRICAL SINGLE LINE**  
SCALE NTS



**3 GROUND FAULT RELAY**  
SCALE NTS



**NOTES:**

- A. EXIT SIGNS ARE FED USING 2-#10 AWG THHN/THWN COPPER CABLE.
- B. ONLY WIRE SERVING EMERGENCY LIGHTING MUST BE INSTALLED IN CONDUIT AND JUNCTION BOXES SERVING THE BATTERY UNITS.
- C. WIRE SERVING EXIT SIGNS ARE NOT TO BE IN CONDUIT WITH NORMAL POWER OR LIGHTING.
- D. CONTRACTOR IS TO INSTALL A 4 HOUR BATTERY BACK UP LIGHT FOR EACH ELEVATOR.
- E. SEE SHEET 277 FOR EM COMPLETE PANEL SCHEDULE

**2 EMERGENCY LIGHTING SINGLE LINE**  
SCALE NTS

**AAA ENGINEERING**  
WBE/DBE CERTIFIED  
5940 West Touhy Avenue, Suite 210, Niles, IL 60714  
Phone: 847-647-9300 • Fax: 847-647-4710

**TranSystems**

USER NAME = hab1b	DESIGNED JCM	REVISED 1/20/2014
CHECKED OS		REVISED
PLOT SCALE = 1/92.0004 / in.	DRAWN HR	REVISED
PLOT DATE = 1/21/2014	CHECKED BC	REVISED

**STATE OF ILLINOIS**  
**DEPARTMENT OF TRANSPORTATION**

**PEORIA STREET STATION**  
**ELECTRICAL SINGLE LINE DIAGRAM**

MUN	SECTION	COUNTY	TOTAL SHEETS	SHEET NO.
2090	2013-011R	COOK	356	276
CONTRACT NO.				
ILLINOIS FED. AID PROJECT				

SHEET NO. E-200 OF 117 SHEETS

11:07:10 AM 6/29/2014 2:27:06.dgn