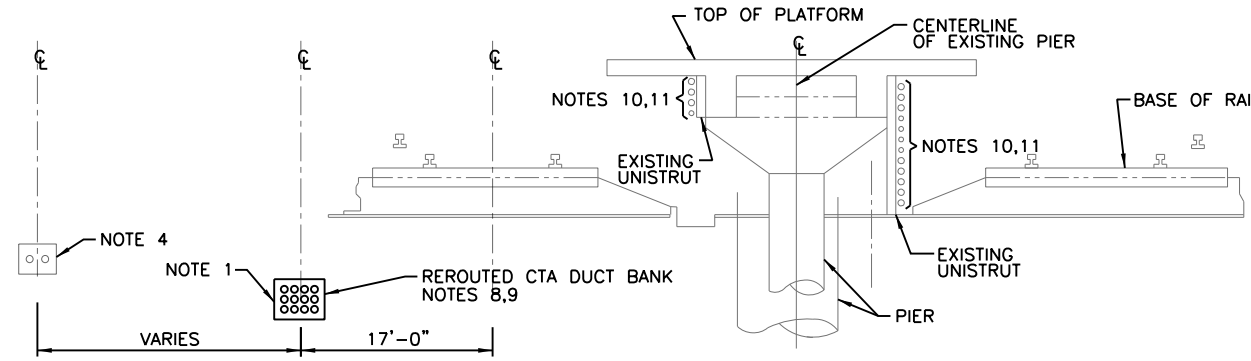
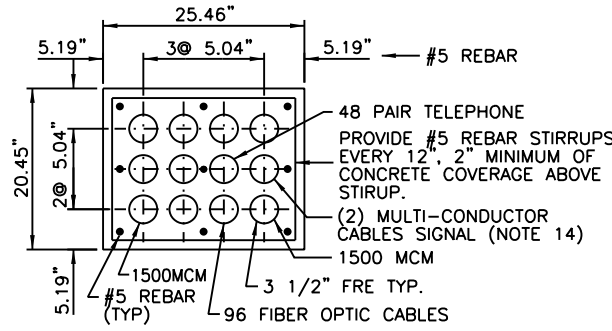


NOTES:

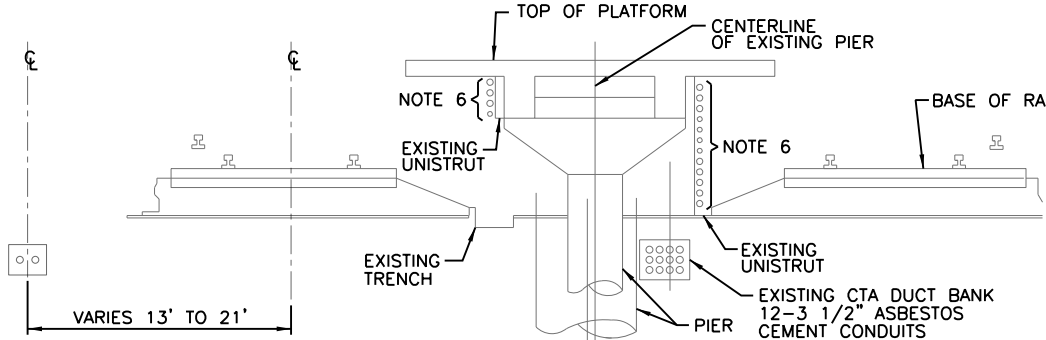
- TOP OF DUCT TO BE 6" BELOW BOTTOM OF SIGNAL POLYDUCT CROSSINGS. COORDINATE DUCT BANK ELEVATIONS TO SLOPE DOWN TOWARDS NEW MANHOLES.
- EXISTING DUCTBANK BETWEEN MANHOLES TO BE REMOVED AFTER INSTALLATION OF NEW DUCTBANK.
- SECTION OF NEW DUCTBANK TO MATCH EXISTING.
- EXISTING SIGNAL POLYDUCT.
- PROVIDE NEW COMMUNICATION, DC RETURN AND FO CABLES AS SHOWN.
- EXISTING CTA COMMUNICATION RACEWAYS AND CABLE ROUTED BELOW PLATFORM TO BE TEMPORARILY SUPPORTED AND/OR RE-ROUTED TO AVOID CONFLICT WITH PLATFORM DEMOLITION AND NEW WORK. REFER TO STRUCTURAL DRAWINGS FOR EXTENT OF DEMOLITION WORK. REFER TO SPECIAL PROVISIONS FOR ADDITIONAL STAGING WORK.
- REFER TO RED AND BLUE LINE STATION RENOVATION CONSTRUCTION PROJECT AS-BUILT DRAWINGS FOR EXISTING CONDITIONS.
- REFER TO SHEET 295 FOR MANHOLE DETAILS.
- EXISTING CABLES SHOWN TO BE SPLICED IN EXISTING MANHOLE AND NEW CABLES ROUTED IN NEW DUCTBANK. COORDINATE WORK IN ADVANCE WITH CTA TO ALLOW CTA TO TRANSITION CONNECTED LOADS OFF OF EXISTING CABLES. CTA REQUIRES 2 MONTHS ADVANCE WRITTEN NOTIFICATION. (MAX 4 HOURS DOWNTIME FOR WORK PERFORMED AT NIGHT ONLY)
- CONTRACTOR TO VERIFY EXACT SIZE, CONTENT, AND LOCATION OF THE FOLLOWING RACEWAYS THAT ARE MOUNTED UNDER THE PLATFORM TO EACH NORTH AND SOUTH FACE OF BEAMS.
 - 1" GRS 1PR SHLD PA STATION SPEAKERS
 - 1" GRS 2 #12 PA KIOSK MICROPHONE POWER
 - 1" GRS 3 2PR SHLD PA AV SIGN DATA
 - 1" GRS 3 2PR SHLD PA KIOSK MICROPHONE DATA & AUDIO
 - 2" GRS 6PR, TELEPHONE KIOSK
 - 2" GRS 1 6PR, 1 2PR, TELEPHONE REVENUE ROOM CTA
 - 2" GRS TELEPHONE REVENUE - AMERITECH
 - 1" GRS 1PR SHLD PA STATION SPEAKERS
 - 1" GRS 1 2PR SHLD PA NOISE SENSOR PLATFORM
 - 1" GRS 2 6PR TELEPHONE ELECTRIC ROOM & HUT
 - 2" GRS 1 25PR SCADA ITC ALARM POINTS
 - 2" GRS 1 12PR SCADA ITC CONTROL POINTS
- REFER TO SHEET S-300 FOR ROUTING OF CONDUIT IN NEW CONFIGURATION OF FOUNDATION OF ELEVATOR.
- TO PERFORM THE DUCT BANK WORK, IT WILL BE NECESSARY TO REMOVE AND REPLACE CERTAIN SECTIONS OF THE TRACK. THE CONTRACTOR TO FOLLOW THE REQUIREMENTS AS OUTLINED IN CTA STATION SPECIFICATIONS 34 11 00 BALLASTED TRACK CONSTRUCTION.
- EXPLORATORY TRENCH (SPECIAL) IS REQUIRED PRIOR TO NEW DUCT BANK WORK. CONTRACTOR TO MAKE DUCT BANK INSTALLATION ADJUSTMENTS BASED ON THE FINDINGS FROM THIS EXPLORATORY WORK. REFER TO STRUCTURAL DRAWINGS AND SPECIAL PROVISIONS FOR THIS WORK.
- 37/C #14 AWG EPR/PE SIGNAL 1K AND 8PR #16AWG EPR/PE SIGNAL 1K. FIELD VERIFY ACTUAL CABLE AND REPLACE IN KIND THESE SIGNAL CABLES BETWEEN RELAY HUTS OR SPLICING HAND HOLES.



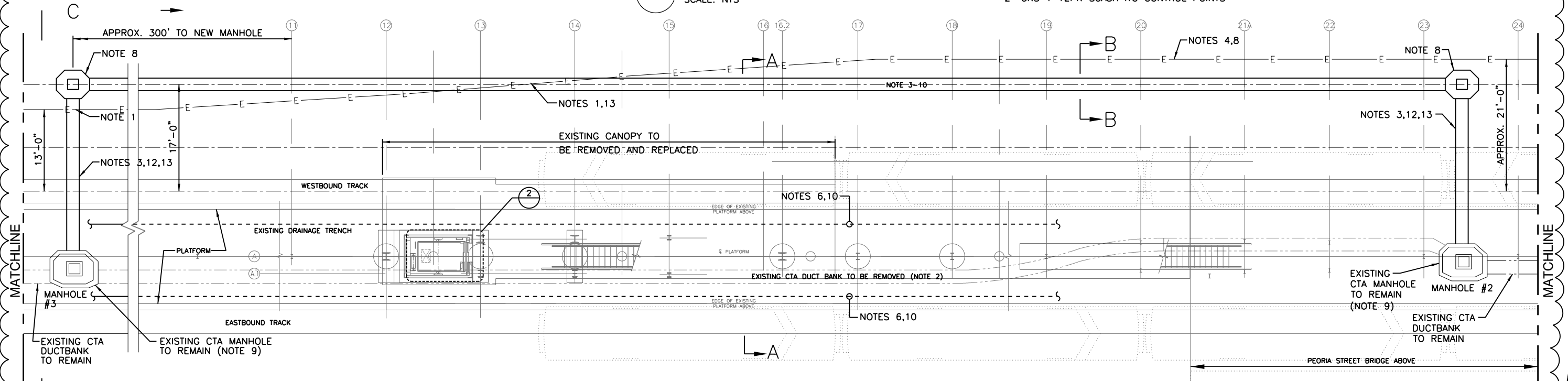
A-A SECTION A-A
SCALE: NTS



B-B DUCT DETAIL
SCALE: NTS (NOTE 9)



C-C SECTION C-C
SCALE: NTS



1 PLATFORM GRADE PLAN
SCALE: 1/8" = 1'-0"

AAA ENGINEERING
WBE/DBE CERTIFIED
5940 West Touhy Avenue, Suite 210, Niles, IL 60714
Phone: 847-647-9300 • Fax: 847-647-4710



USER NAME = habib	DESIGNED -	REVISED - 12/18/2013
	CHECKED -	REVISED
PLOT SCALE = 16:0 "/ in.	DRAWN -	REVISED
PLOT DATE = 12/17/2013	CHECKED -	REVISED

STATE OF ILLINOIS
DEPARTMENT OF TRANSPORTATION

PEORIA STREET STATION
COMMUNICATION PLATFORM GRADE LEVEL PLAN

MUN	SECTION	COUNTY	TOTAL SHEETS	SHEET NO.
2090	2013-011R	COOK	356	294
CONTRACT NO.			60W29	

SHEET NO. T-110 OF 117 SHEETS

ILLINOIS FED. AID PROJECT

3:53:58 PM 2/9/16 W29.dgn