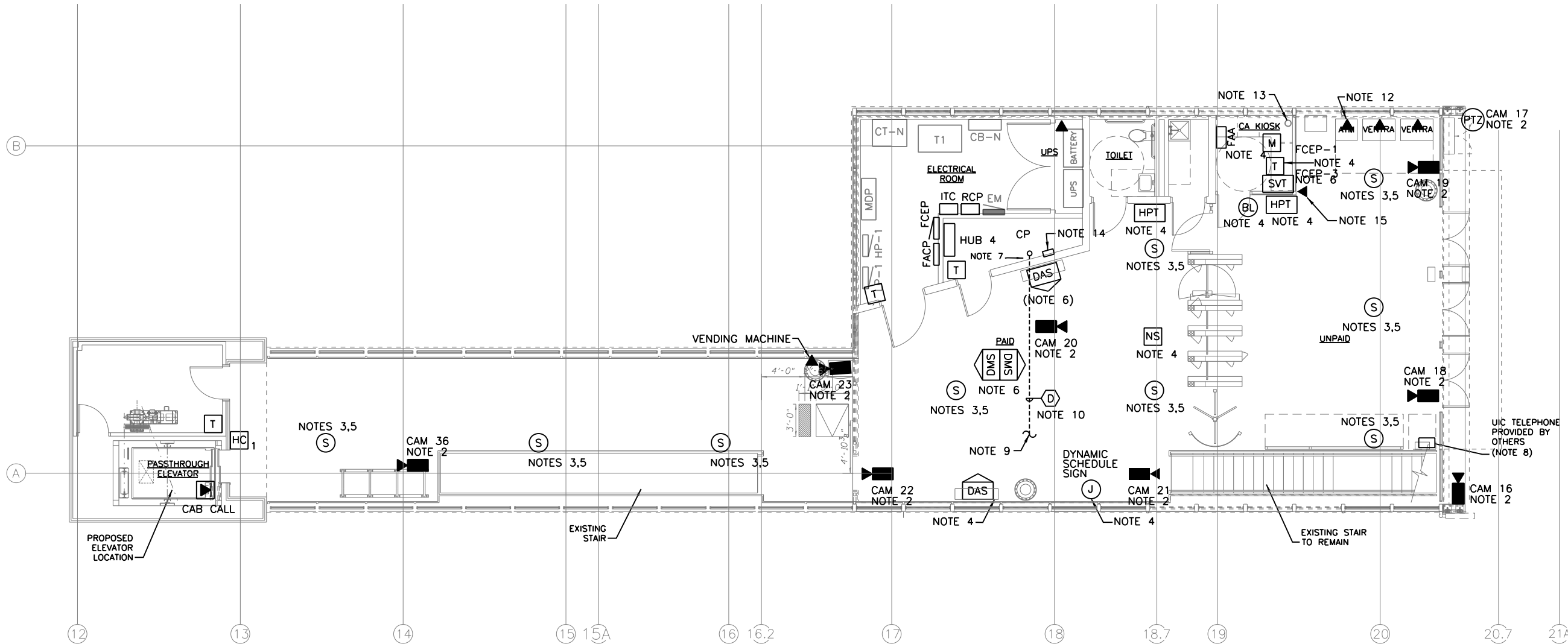


A

NOTES:

1. REMOVE ALL EXISTING CAMERAS AND HAND OVER TO CTA. PROVIDE NEW CCTV CAMERAS.
2. NEW CAMERA, INSTALL AT LOCATION AS SHOWN.
3. NEW SPEAKER INSTALL AT LOCATION AS SHOWN.
4. NEW EQUIPMENT. INSTALL AT LOCATION AS SHOWN.
5. SPEAKER MOUNTED IN FILLER SECTION OF CONTINUOUS LTG. PROVIDE INSULATED BACK BOX. REFER TO LIGHTING PLAN FOR EXACT LOCATION.
6. EXISTING EQUIPMENT IN RELOCATED POSITION. COORDINATE FINAL LOCATION WITH ARCHITECTURAL DRAWINGS AND CTA.
7. PROVIDE 4'X8' WALL FIELD WITH TERMINAL BLOCKS. LOCATE NEW TELEPHONE UTILITY NETPOP ON WALLFIELD.
8. PROVIDE 3/4" EMPTY CONDUIT TO COMM. ROOM. SEE ELECTRICAL SITE PLAN FOR ADDITIONAL WORK.
9. DOWN TO PLATFORM. SEE SHEET 295 FOR CONTINUATION.
10. TELEPHONE CABLE TYPE L TO PEORIA ST. STATION COMMUNICATION ROOM WALL FIELD.
11. REFER TO SHEETS 299, 300, 301, 302, 303, 306 FOR CONDUIT AND WIRING REQUIREMENTS.
12. PROVIDE EMPTY 3/4" GRS TO WALL FIELD.
13. PROVIDE 2-1" GRS FROM KIOSK TO COMMUNICATION ROOM WALL FIELD.
14. NEW TELEPHONE NET POP.
15. CUSTOMER ASSISTANCE BUTTON.



1 COMMUNICATIONS PLAN
SCALE: 3/16" = 1'-0"

AAA ENGINEERING
WBE/DBE CERTIFIED
5940 West Touhy Avenue, Suite 210, Niles, IL 60714
Phone: 847-647-9300 • Fax: 847-647-4710



USER NAME = habib	DESIGNED JCM	REVISED 1/20/2014
	CHECKED OS	REVISED
PLOT SCALE = 10:8 1/4" / in.	DRAWN HR	REVISED
PLOT DATE = 1/21/2014	CHECKED BC	REVISED

STATE OF ILLINOIS
DEPARTMENT OF TRANSPORTATION

PEORIA STREET STATION
COMMUNICATION STATION HOUSE LEVEL PLAN

SHEET NO. T-120 OF 117 SHEETS

MUN	SECTION	COUNTY	TOTAL SHEETS	SHEET NO.
2090	2013-011R	COOK	356	298
CONTRACT NO.			60W29	

ILLINOIS FED. AID PROJECT

1:09:48 AM 6/01/2014 60W29-298.dgn