

STATE OF ILLINOIS
DEPARTMENT OF TRANSPORTATION
DIVISION OF HIGHWAYS

**PROPOSED
HIGHWAY PLANS**

F.A.P. ROUTE ³³⁷ ILL 22 (HALF DAY ROAD)
FROM ILL 21 /US 45 (MILWAUKEE AVE.) TO I-94
SECTION 20LS-6
LANDSCAPING
LAKE COUNTY

C-91-382-13

F.A.P. RTE.	SECTION	COUNTY	TOTAL SHEETS	SHEET NO.
337	20LS-6	LAKE	12	1
ILLINOIS CONTRACT NO. 60W83				

D-91-382-13

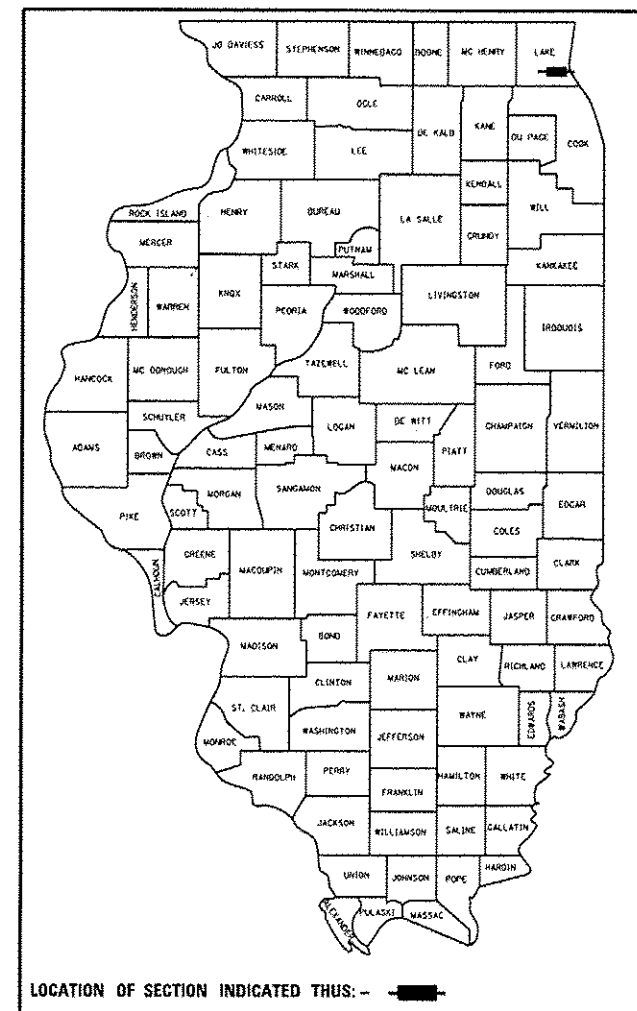
FOR INDEX OF SHEETS, SEE SHEET NO. 2

TRAFFIC DATA

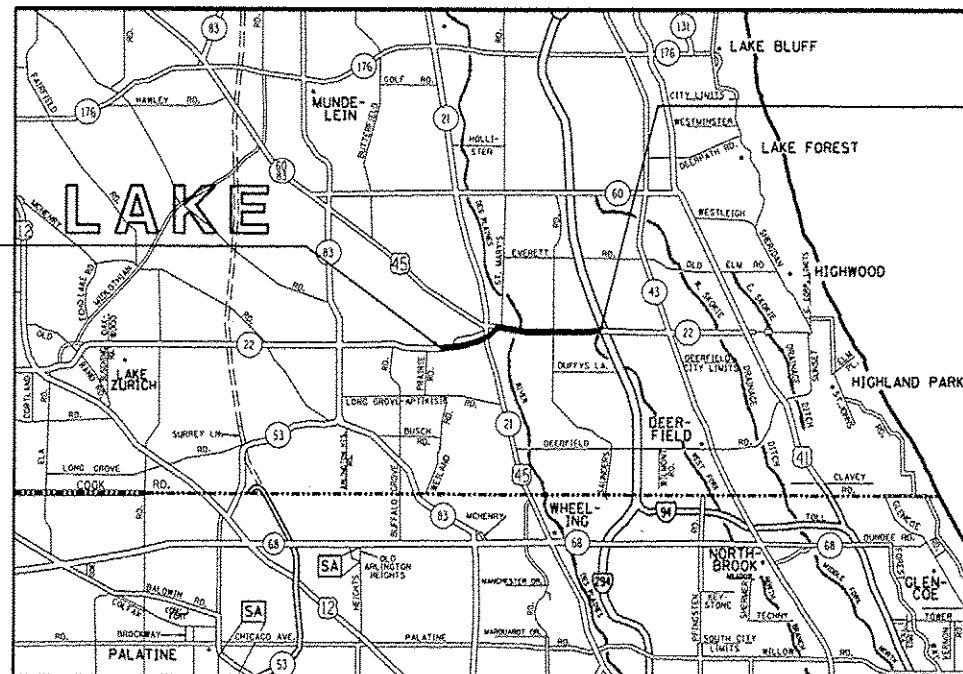
ILL 22 (HALF DAY ROAD): 33,700 (2011) ADT

POSTED SPEED: 35 MPH

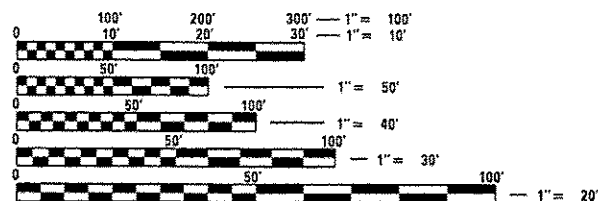
IMPROVEMENT LOCATED IN THE
VILLAGE OF LINCOLNSHIRE



IMPROVEMENT BEGINS
STA. 225 + 00



IMPROVEMENT ENDS
STA. 380 + 00



FULL SIZE PLANS HAVE BEEN PREPARED USING STANDARD ENGINEERING SCALES. REDUCED SIZED PLANS WILL NOT CONFORM TO STANDARD SCALES. IN MAKING MEASUREMENTS ON REDUCED PLANS, THE ABOVE SCALES MAY BE USED.

J.U.L.I.E.
JOINT UTILITY LOCATION INFORMATION FOR EXCAVATION
1-800-892-0123
OR 811

PROJECT DESIGNER: MELISSA DEL ROSARIO (847)705-4391
PROJECT MANAGER: RICHARD WANNER (847) 705-4172

GROSS LENGTH = 15,312 FT. = 2.9 MILE
NET LENGTH = 15,312 FT. = 2.9 MILE

CONTRACT NO. 60W83

STATE OF ILLINOIS
DEPARTMENT OF TRANSPORTATION
DIVISION OF HIGHWAYS

SUBMITTED *November 20 13*

John F. ...
DEPUTY DIRECTOR OF HIGHWAYS, REGION ENGINEER

Jan 24 20 14
John D. Baranzelli, PE
ENGINEER OF DESIGN AND ENVIRONMENT

Jan 24 20 14
Omer Osman, PE
DIRECTOR OF HIGHWAYS, CHIEF ENGINEER

PRINTED BY THE AUTHORITY
OF THE STATE OF ILLINOIS

Rev.