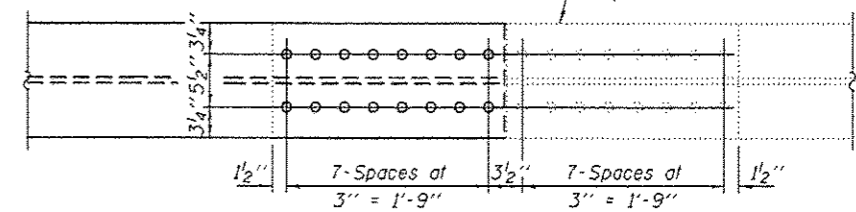
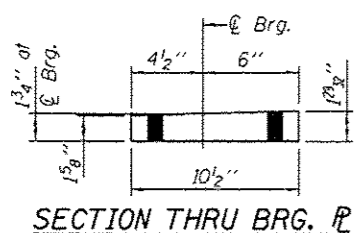


SPAN 1, BEAM 12 ELEVATION

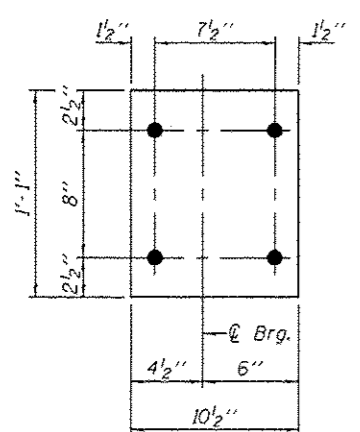
Notes:
 Natural camber of new beam shall be placed upward for fabrication.
 All holes to be field drilled using holes in existing steel as template.



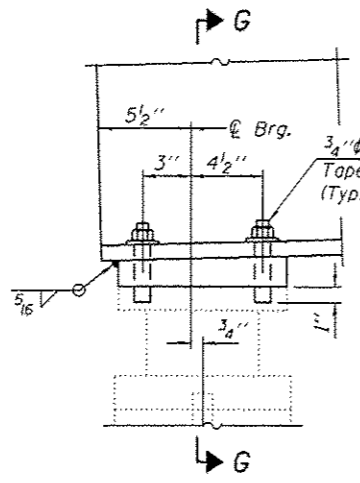
FLANGE SPLICE DETAIL



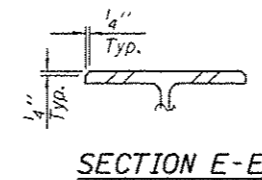
SECTION THRU BRG. P



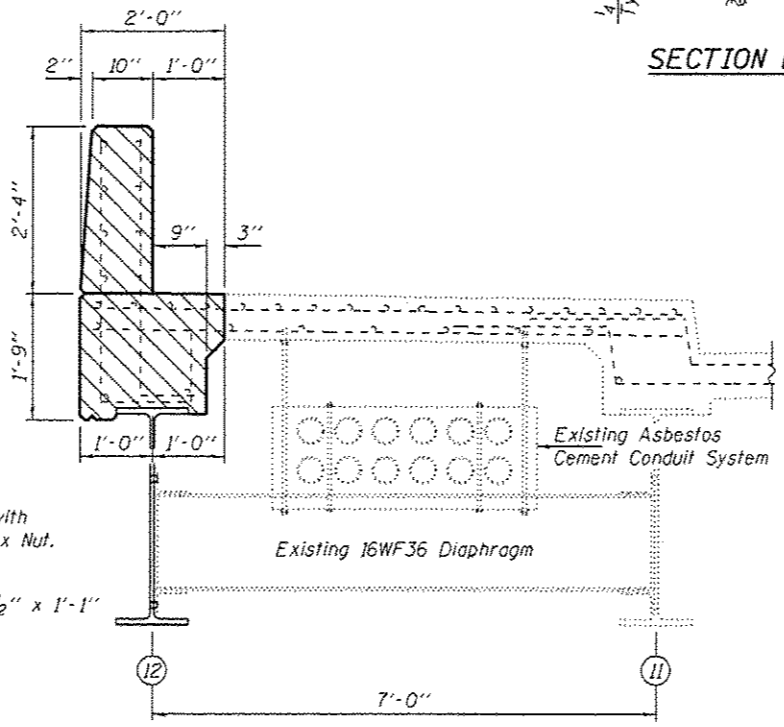
BEARING P PLAN



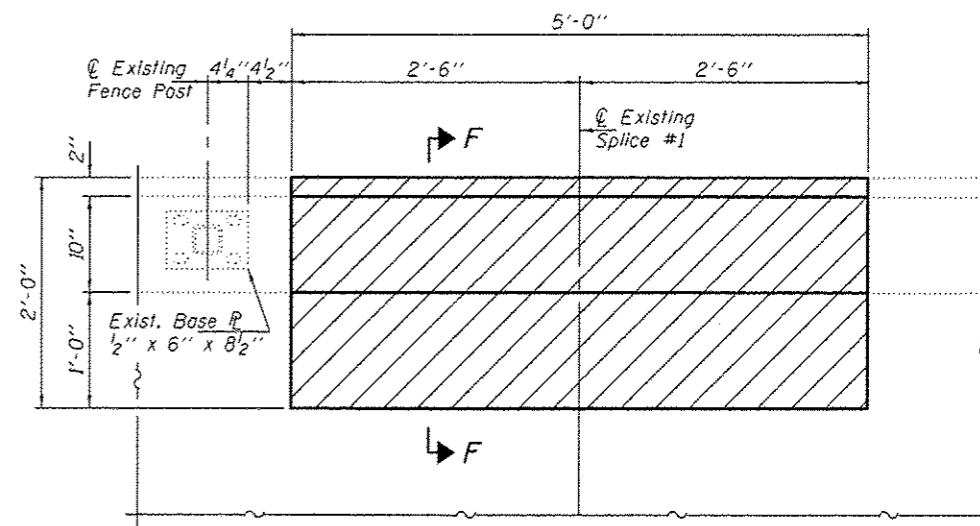
ELEVATION AT BEARING



SECTION E-E

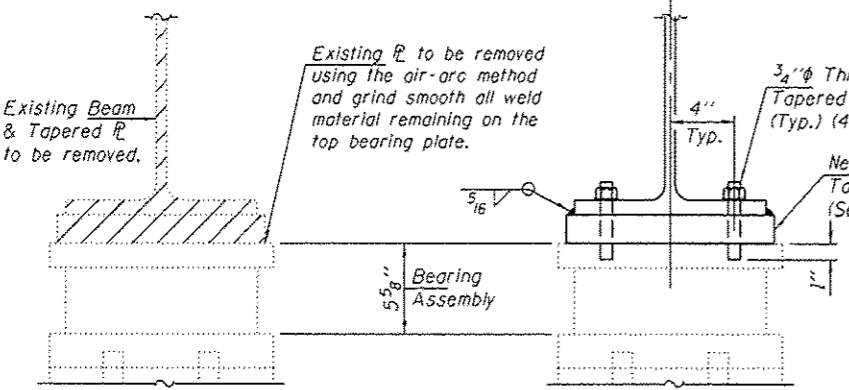


SECTION F-F



CONCRETE SURFACE REMOVAL AND REPLACEMENT

Hatched areas indicate concrete sections to be removed and replaced. Perimeters of concrete removal areas shall be saw cut 3/4 inch prior to the removal of concrete. Reinforcement shall be cut only if required for fitting bolts. Cut reinforcement shall be spliced as directed by the Engineer. Cost shall be included with Concrete Removal.



BEARING P REMOVAL

Hatched area indicates Structural Steel Removal.

SECTION G-G

DESIGNED - DAB	EXAMINED - <i>Timothy A. Ruck</i>	DATE - NOVEMBER 15, 2013	STATE OF ILLINOIS DEPARTMENT OF TRANSPORTATION	BEAM 12 REPLACEMENT DETAILS SN 016-2068	F.A. RTE.	SECTION	COUNTY	TOTAL SHEETS	SHEET NO.
CHECKED - TLC	PASSED - <i>Carl R. Perry</i>				VAR	2013-044BR	COOK	35	25
DRAWN - Kyla M. Steffen	ACTING ENGINEER OF BRIDGES AND STRUCTURES		SHEET NO. 4 OF 7 SHEETS		CONTRACT NO. 60W94				
CHECKED - DAB					ILLINOIS FED. AID PROJECT				