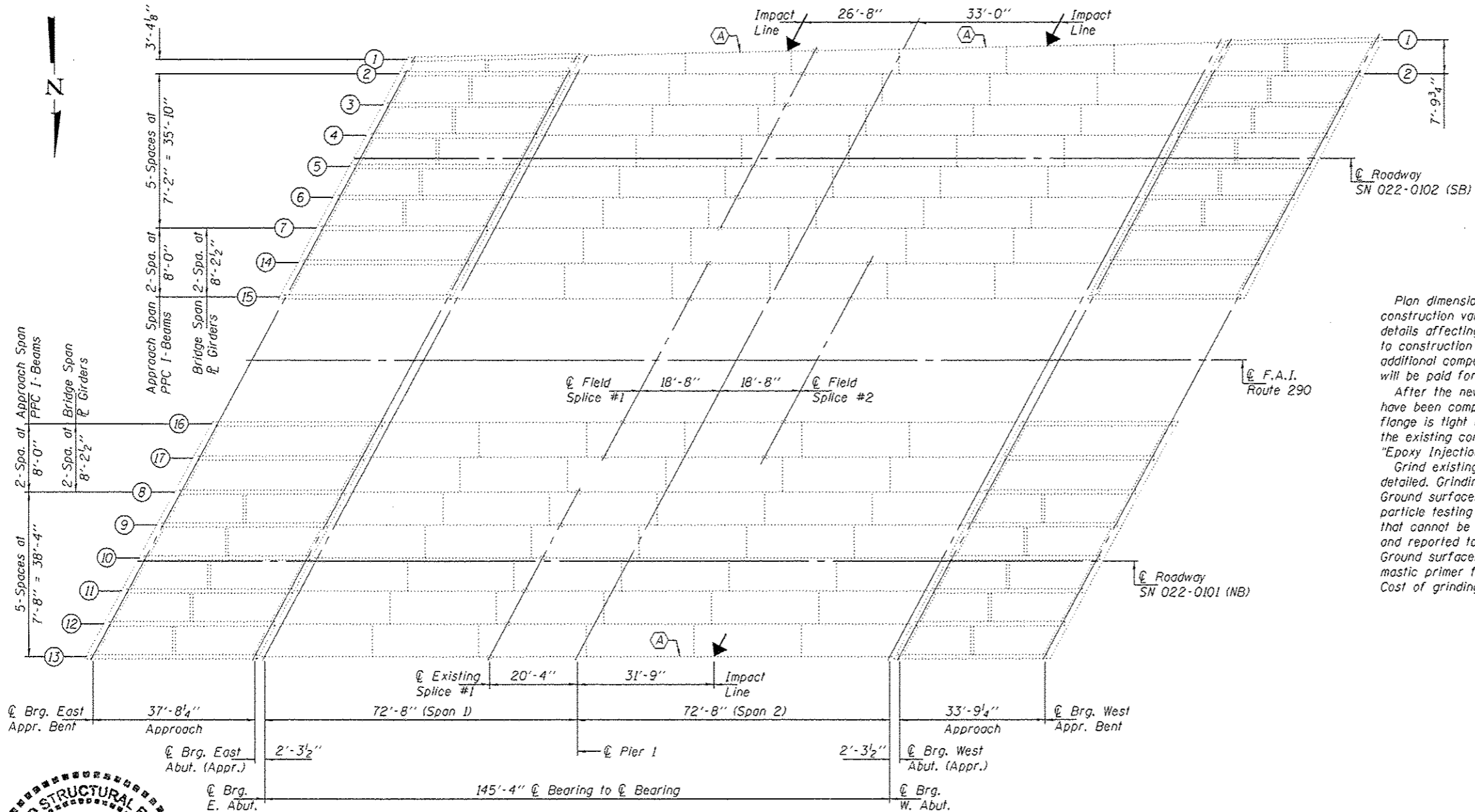
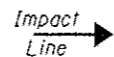


ELEVATION



FRAMING PLAN



(A) - Beam Straightening

GENERAL NOTES

Plan dimensions and details relative to existing plans are subject to nominal construction variations. The Contractor shall field verify existing dimensions and details affecting new construction and make necessary approved adjustments prior to construction or ordering of materials. Such variations shall not be cause for additional compensation for a change in scope of the work, however, the Contractor will be paid for the quantity actually furnished at the unit price bid for the work.

After the new beam is in its final position and/or beam straightening operations have been completed, the Engineer in the field shall check to see that the top flange is tight against the slab. If not, the Contractor shall inject epoxy between the existing concrete deck and the top flange of the beam. See Special Provision "Epoxy Injection".

Grind existing nicks, gouges and shallow cracks in the damaged beams as detailed. Grinding shall be done parallel to the longitudinal axis of the member. Ground surfaces shall be inspected for cracks using dye penetrant or magnetic particle testing prior to initiating any beam straightening operations. Any cracks that cannot be removed by grinding approximately 1/4" deep shall be identified and reported to the Bureau of Bridges and Structures for further disposition. Ground surfaces shall be spot cleaned and painted with an aluminum epoxy mastic primer followed by a finish coat to match the color of the existing beam. Cost of grinding, testing and spot painting included with Beam Straightening.

TOTAL BILL OF MATERIAL

ITEM	UNIT	QUANTITY
Beam Straightening	L.S.	0.25



Expires: November 30, 2014

DESIGNED - *V. H. V.*
 CHECKED - *K. M. S.*
 DRAWN - *K. M. S.*
 CHECKED - *V. H. V.*

EXAMINED - *Thom A. ...*
 PASSED - *...*

DATE - NOVEMBER 15, 2013

STATE OF ILLINOIS
 DEPARTMENT OF TRANSPORTATION

GENERAL PLAN & ELEVATION
 F.A.I. ROUTE 290 OVER GRAND AVENUE
 SN 022-0101 (NB) & -0102 (SB)

F.A. RTE.	SECTION	COUNTY	TOTAL SHEETS	SHEET NO.
VAR	2013-044BR	DUPAGE	35	29

CONTRACT NO. 60W94
 SHEET NO. 1 OF 2 SHEETS
 ILLINOIS FED. AID PROJECT