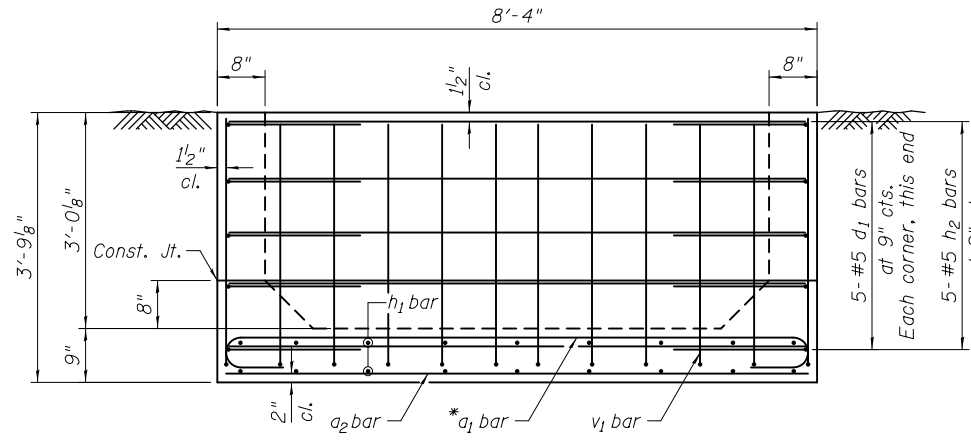
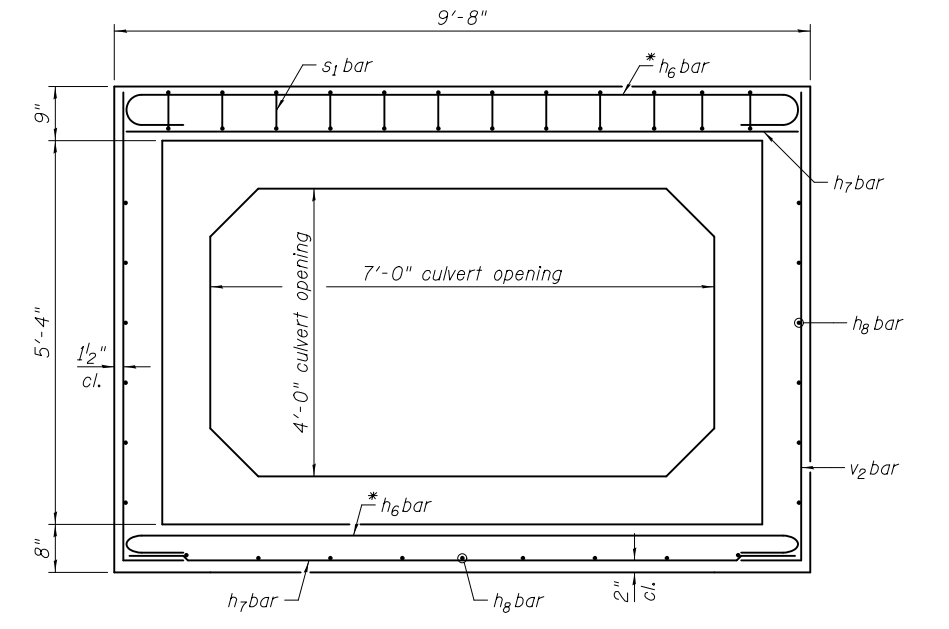


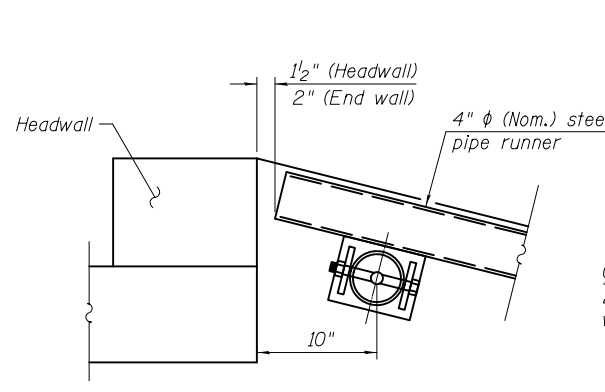
SECTION A-A



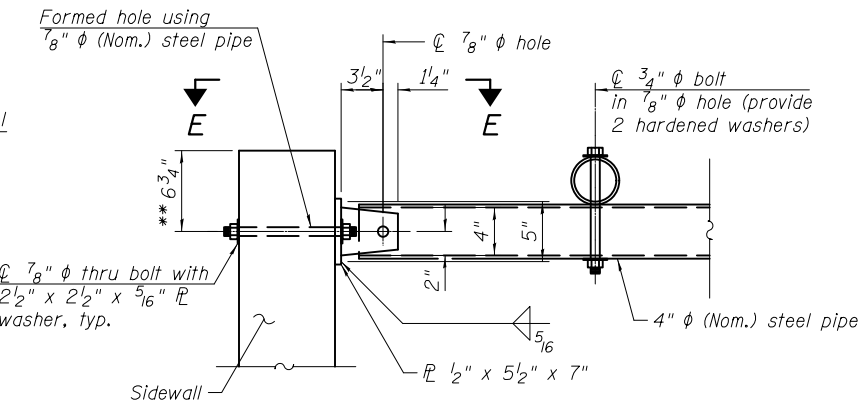
VIEW B-B  
End Wall



SECTION C-C  
Headwall

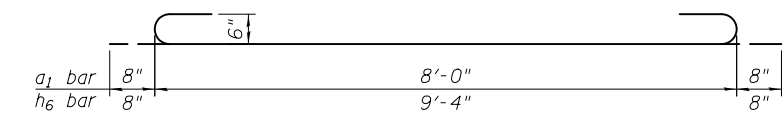


DETAIL A

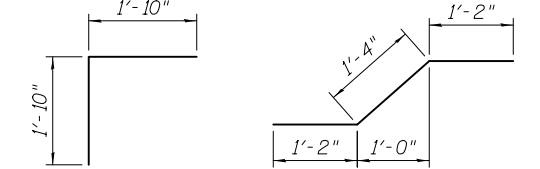


SECTION D-D

\*\* Measured perpendicular to top of sidewall. In addition, formed hole shall be located a minimum of 6" measured horizontally from any vertical joints necessary for construction of the culvert extension with drop box.

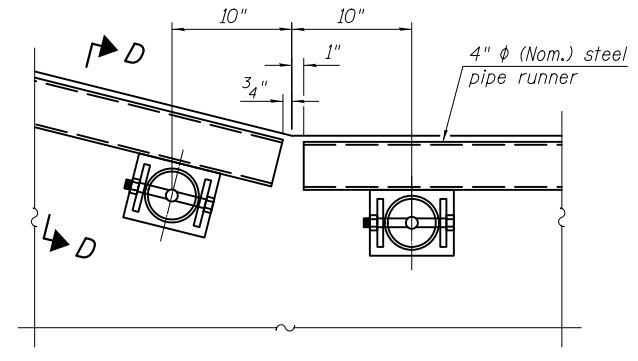


BAR a<sub>1</sub> and h<sub>6</sub>  
\* Tilt #6 a<sub>1</sub> and #6 h<sub>6</sub> bars as required to maintain clearance.

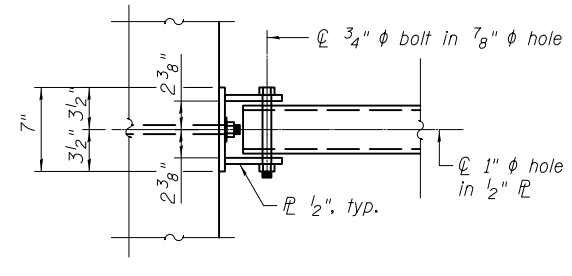


BAR d<sub>1</sub>

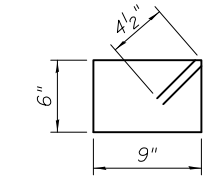
BAR h<sub>8</sub>



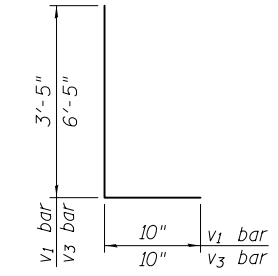
DETAIL B



VIEW E-E



BAR s<sub>1</sub>



BAR v<sub>1</sub> and v<sub>3</sub>

FIELD CUTTING DIAGRAM  
Order h<sub>5</sub> full length. Cut as shown and use the remainder of bars in the opposite wall.

FIELD CUTTING DIAGRAM  
Order v<sub>2</sub> full length. Cut as shown and use the remainder of bars in the opposite wall.

BILL OF MATERIAL  
(For Information Only)

Bar	No.	Size	Length	Shape
a <sub>1</sub>	36	#6	9'-4"	┌───┐
a <sub>2</sub>	18	#5	8'-0"	┌───┐
d <sub>1</sub>	10	#5	3'-8"	┌───┐
h <sub>1</sub>	9	#5	17'-0"	┌───┐
h <sub>2</sub>	5	#5	8'-1"	┌───┐
h <sub>3</sub>	10	#5	17'-0"	┌───┐
h <sub>4</sub>	2	#5	10'-4"	┌───┐
h <sub>5</sub>	3	#5	9'-11"	┌───┐
h <sub>6</sub>	4	#6	10'-8"	┌───┐
h <sub>7</sub>	4	#6	9'-4"	┌───┐
h <sub>8</sub>	19	#5	3'-8"	┌───┐
s <sub>1</sub>	8	#4	3'-3"	┌───┐
v <sub>1</sub>	32	#5	4'-3"	┌───┐
v <sub>2</sub>	12	#5	10'-11"	┌───┐
v <sub>3</sub>	4	#5	7'-3"	┌───┐
Concrete Structures			Cu. Yd.	9.8
Reinforcement Bars			Pound	1,640

9/18/2013 2:52:48 PM 1010000-64H04-SHT-002\_DET02.dgn



DESIGNED -	BJM	REVISED -	
CHECKED -	MAS	REVISED -	
DRAWN -	MWS	REVISED -	
CHECKED -	BJM	REVISED -	

DESIGNED -	BJM	REVISED -	
CHECKED -	MAS	REVISED -	
DRAWN -	MWS	REVISED -	
CHECKED -	BJM	REVISED -	

STATE OF ILLINOIS  
DEPARTMENT OF TRANSPORTATION

DETAILS  
DROP BOX NO. 1  
SHEET NO. S-2 OF 2 SHEETS

F.A.P.	SECTION	COUNTY	TOTAL SHEETS	SHEET NO.
505	(W-15d)T-2	WINNEBAGO	41	28
CONTRACT NO. 64H04			ILLINOIS FED. AID PROJECT	