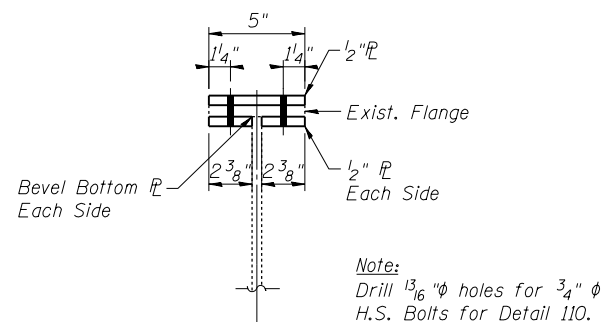
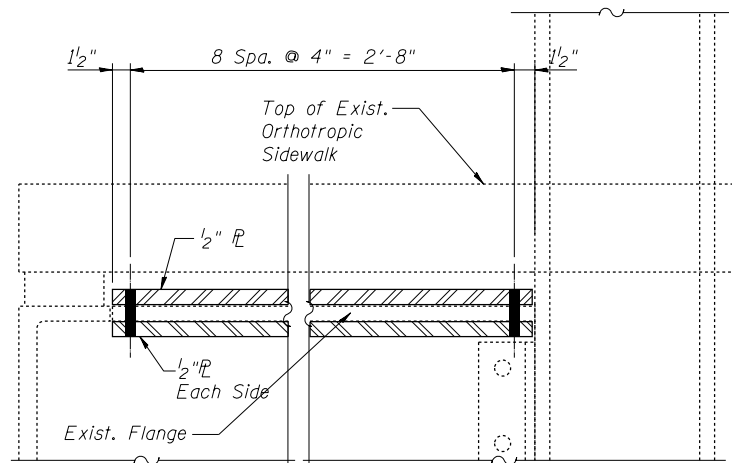


- Notes:**
1. Remove and re-install sidewalk as necessary to install top plate. Cost included with Structural Steel Repair.
  2. All holes shall be  $\frac{13}{16}$ "  $\phi$  and all bolts shall be  $\frac{3}{4}$ "  $\phi$  H.S. for Top Flange of Bracket Repair.

**DETAIL 110**  
See Table for Locations



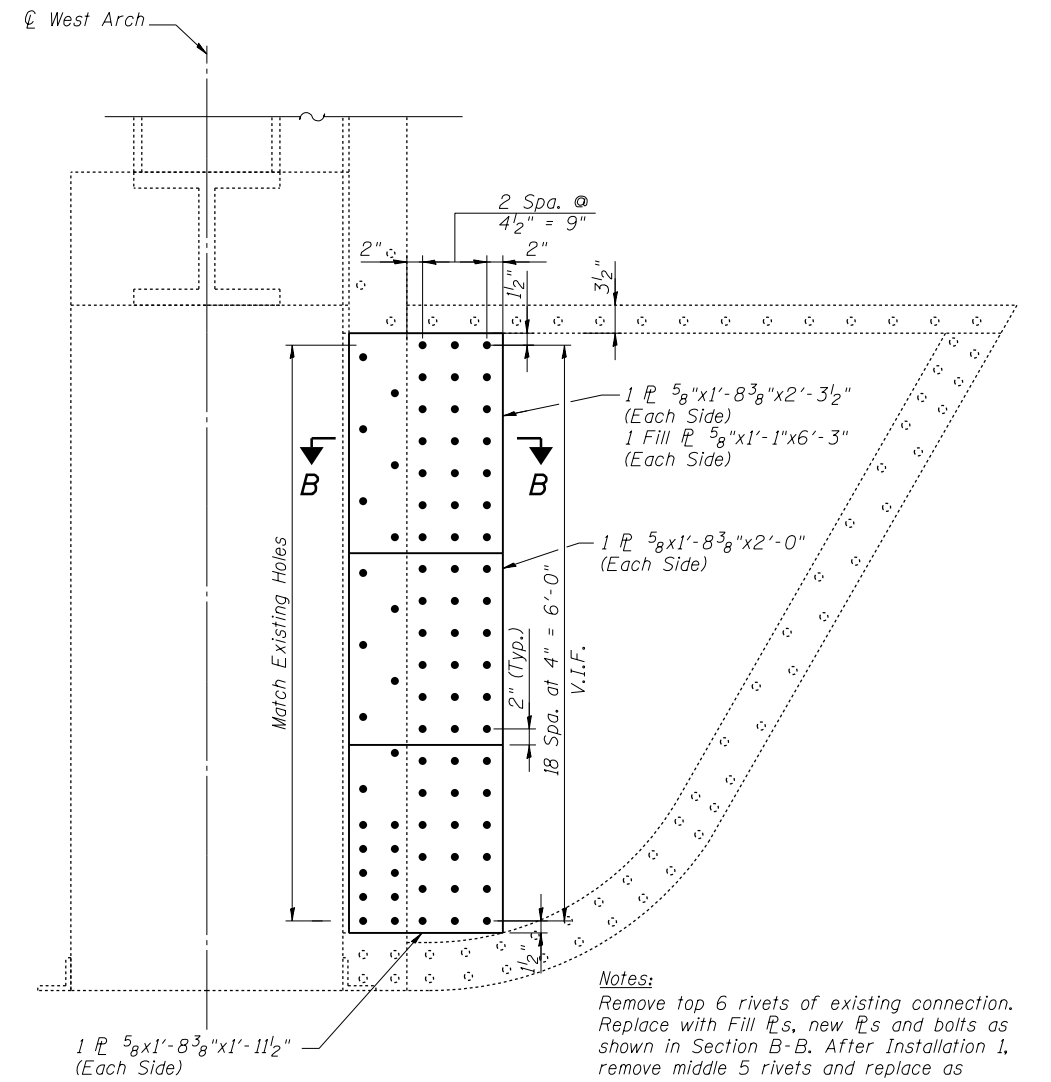
**SECTION A-A**



**DETAIL B**  
**TOP FLANGE REPAIR ELEVATION**

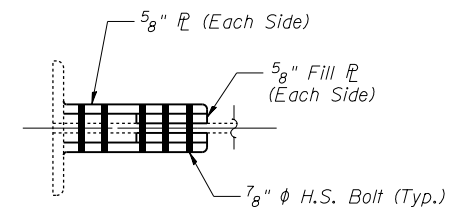
**DETAIL 110 - LOCATION SUMMARY**

SPAN	MEMBER	LOCATION
9	FB 3	West Cantilevered Bracket
10	FB 11	East Cantilevered Bracket
10	FB 10	East Cantilevered Bracket
10	FB 8	East Cantilevered Bracket
10	FB 5	East Cantilevered Bracket
10	FB 4	East Cantilevered Bracket
10	FB 1	East Cantilevered Bracket
11	FB 8	East Cantilevered Bracket
11	FB 6	East Cantilevered Bracket
12	FB 10	East Cantilevered Bracket
12	FB 9	East Cantilevered Bracket
12	FB 8	East Cantilevered Bracket
12	FB 7	East Cantilevered Bracket
12	FB 6	East Cantilevered Bracket
12	FB 5	East Cantilevered Bracket
12	FB 4	East Cantilevered Bracket
12	FB 2	East Cantilevered Bracket
12	FB 2	West Cantilevered Bracket
12	FB 1	East Cantilevered Bracket
12	FB 1	West Cantilevered Bracket
13	FB 10	East Cantilevered Bracket
13	FB 7	East Cantilevered Bracket
13	FB 5	East Cantilevered Bracket
13	FB 4	East Cantilevered Bracket



- Notes:**
- Remove top 6 rivets of existing connection. Replace with Fill PLs, new PLs and bolts as shown in Section B-B. After Installation 1, remove middle 5 rivets and replace as described for Installation 2. Remove Bottom 12 Rivets and complete Installation 3. All dimensions shall be verified in the field.

**DETAIL 131**  
Span 11, Floor Beam 0, West End Bracket  
Above Bearing at Pier 4



**SECTION B-B**

I:\Projects\4015550\4015550-0001-90-CAD Models and Sheets\04\_CJ\_Bridge\SD\10819505-64H28-023-Bracket.dgn