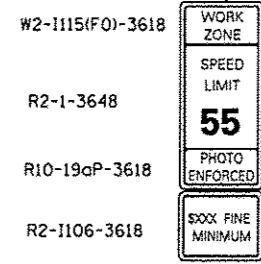
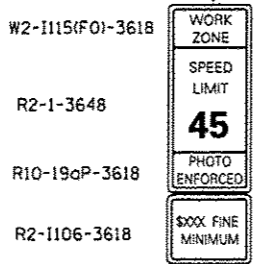


SEE STANDARD 701400 (SPECIAL) FOR APPROACH LANE CLOSURE SIGNING

- ① TEMPORARY PAVEMENT MARKING TAPE SHALL BE PLACED THROUGHOUT THE TAPER. EDGE LINE SHALL BE WHITE AND THE LEFT EDGE LINE SHALL BE YELLOW.
- ② EXISTING PAVEMENT MARKING
- ③ BARRIER WALL/GUARDRAIL MARKERS AT 25'. MARKERS ON RIGHT SHALL BE CRYSTAL AND MARKERS ON LEFT SHALL BE AMBER. COST INCLUDED WITH TEMPORARY CONCRETE BARRIER.



SYMBOLS

- ↑ ARROW BOARD
- ▨ WORK AREA
- ⊥ SIGN
- TRAFFIC CONTROL DRUM WITH STEADY BURN MONODIRECTIONAL LIGHT
- ▬ TEMPORARY CONCRETE BARRIER
- ◁ MONODIRECTIONAL BARRIER WALL/GUARDRAIL MARKER
- ▩ IMPACT ATTENUATOR

GENERAL NOTES

THIS STANDARD IS USED WHERE AT ANY TIME ANY VEHICLE, EQUIPMENT, WORKERS OR THEIR ACTIVITIES WILL ENCR OACH ON THE PAVEMENT OR ON THE SHOULDER WITHIN 24 INCHES OF THE EDGE OF PAVEMENT FOR DAYLIGHT OPERATION EXCEEDING ONE DAY AND WHERE TEMPORARY CONCRETE BARRIER IS UTILIZED.

THIS STANDARD MUST BE USED IN COMBINATION WITH STANDARD 701400 (SPECIAL).

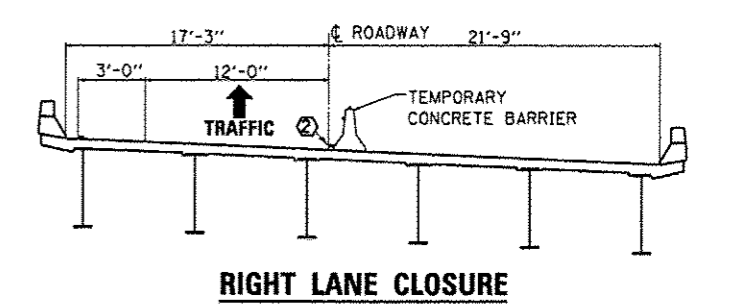
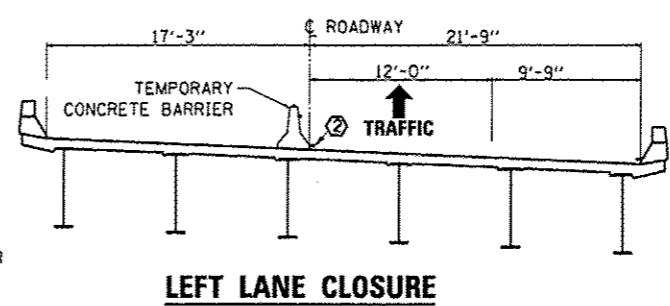
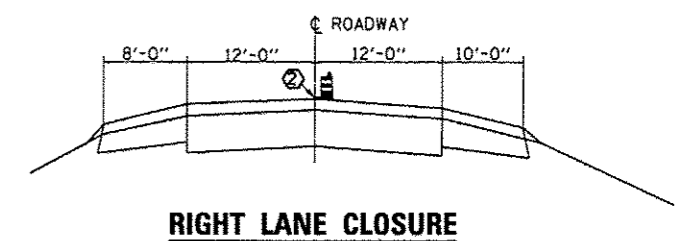
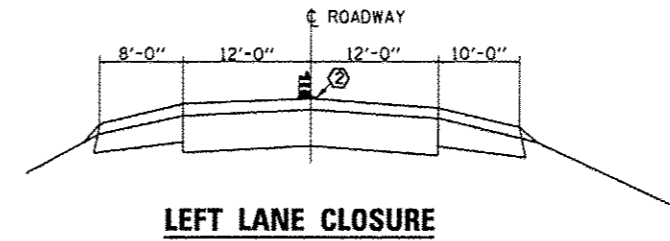
WHEN WORK IS BEING PERFORMED IN THE LEFT LANE, THE SET UP WOULD BE A MIRROR IMAGE TO WHAT IS SHOWN.

FLAGGER, FLAGGER SIGNS AND SPEED LIMIT SIGNS SHALL BE REQUIRED WHENEVER TEMPORARY CONCRETE BARRIER IS NOT IN PLACE. WHEN TEMPORARY CONCRETE BARRIER IS IN PLACE, THE FLAGGER SIGNS SHALL BE REMOVED OR COVERED AND THE FLAGGER NOT REQUIRED.

TEMPORARY CONCRETE BARRIER SHALL BE ACCORDING TO STANDARD 704001.

INITIAL SETUP OF TEMPORARY CONCRETE BARRIER WILL BE PAID FOR AT THE CONTRACT UNIT PRICE FOR TEMPORARY CONCRETE BARRIER.

ALL RELOCATES OF THE INITIAL SET UP OF TEMPORARY CONCRETE BARRIER WILL BE PAID FOR AT THE CONTRACT UNIT PRICE FOR RELOCATE TEMPORARY CONCRETE BARRIER



| | | | | | | | | | | | |
|--|---------------------------|------------------------|-----------|---|---|-----------------------------|--------------|--------|--------------|-----------|--|
| FILE NAME * | USER NAME * Potelyj | DESIGNED - R WOODSHANK | REVISED - | STATE OF ILLINOIS DEPARTMENT OF TRANSPORTATION | TRAFFIC CONTROL AND PROTECTION STANDARD 701402 (SPECIAL) | F.A.I. RTE. | SECTION | COUNTY | TOTAL SHEETS | SHEET NO. | |
| ct:\pw\work\pwidot\potelyj\08343832\0366 | ll-sht-details.dgn | DRAWN - Z SHAW | REVISED - | | | 180 | (06-2HB-6)BP | BUREAU | 9 | 5 | |
| | PLOT SCALE = 1/8" = 1'-0" | CHECKED - Y PATEL | REVISED - | | | CONTRACT NO. 66D11 | | | | | |
| | PLOT DATE = 12/9/2013 | DATE - | REVISED - | | | [ILLINOIS] FED. AID PROJECT | | | | | |