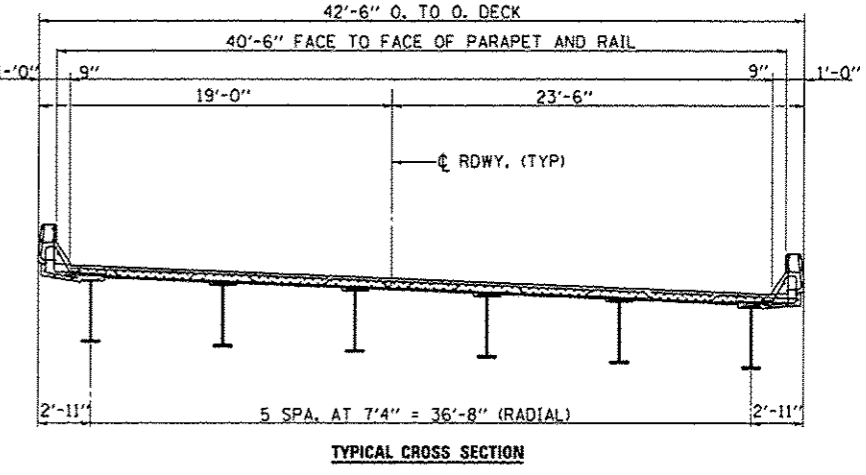
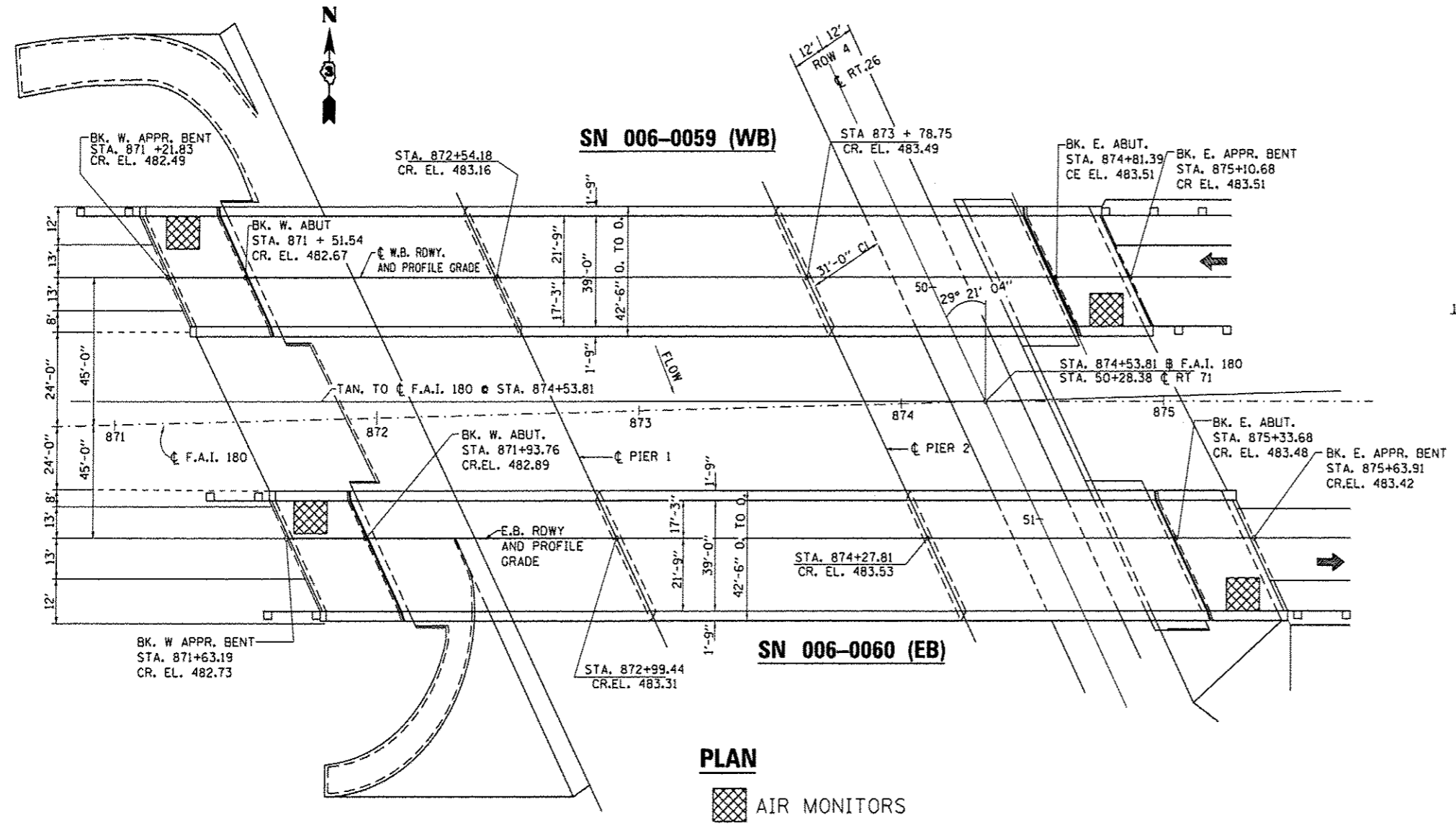
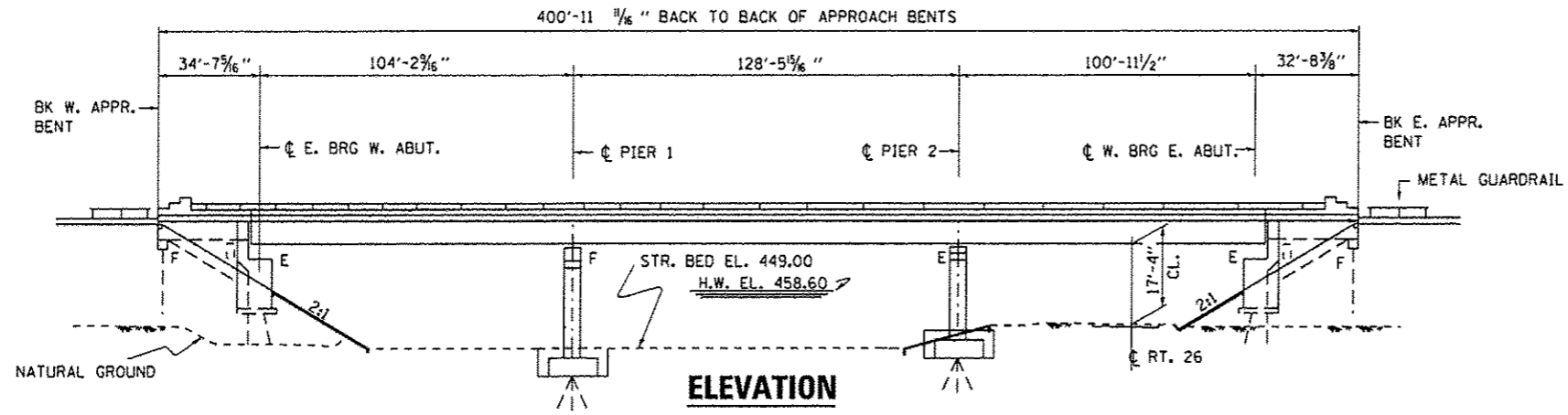


GENERAL NOTES

SN 006-0059 IS LOCATION 1 AND SN 006-0060 IS LOCATION 2
 THE CONTRACTOR SHALL BE REQUIRED TO SECURE WASTE CONTAINERS THAT REMAIN ON THE JOB SITE. THIS WILL ENTAIL THAT ALL WASTE CONTAINERS CAN NOT BE MOVED OR OPENED DURING NON-WORKING HOURS.
 WORKING DAYS SHALL BE CHARGED UNTIL THE CONTRACTOR/SUBCONTRACTOR LISCENSED TO DISPOSE OF LEAD PAINT REDIDUE HAS REMOVED THE WASTE MATERIAL FROM THE JOB SITE ACCORDING TO ALL FEDERAL, STATE AND LOCAL LAWS AND ORDINANCES. IF THE CONTRACTOR/SUBCONTRACTOR LICENSED TO DISPOSE OF LEAD PAINT RESIDUE FAILS TO DISPOSE OF PAINT RESIDUES ON OR BEFORE THE SPECIFIED COMPLETION DATE, LIQUIDATED DAMAGES SHALL BE CHARGED PER CALENDAR DAY ACCORDING TO ARTICLE 108.09 OF THE STANDARD SPECIFICATIONS UNTIL SUCH TIME THAT THE PAINT RESIDUES HAVE BEEN PROPERLY DISPOSED OF.
 THE SSPC-0P1 AND SSPC-0P2 "PAINTING CONTRACTOR CERTIFICATIONS" WILL BE REQUIRED FOR THIS PROJECT.
 CLEANING AND PAINTING OF THE EXISTING STRUCTURAL STEEL SHALL BE AS SPECIFIED IN THE SPECIAL PROVISION FOR "CLEANING AND PAINTING EXISTING STEEL STRUCTURES". ALL EXTERIOR AND INTERIOR SURFACES OF THE BEAMS, DIAPHRAGMS, BEARING ASSEMBLIES AND ALL OTHER ASSOCIATED STEEL COMPONENTS SHALL BE CLEANED PER "NEAR WHITE BLAST CLEANING - SSPC-SP10. ALL EXISTING STEEL SHALL BE PAINTED ACCORDING TO THE REQUIREMENTS OF "PAINT SYSTEM 1 - OZ/E.U. THE COLOR OF THE FINAL FINISH COAT FOR ALL INTERIOR STEEL SURFACES SHALL BE "GRAY, MUNSELL NO. 5B 7/1". THE COLOR OF THE FINAL FINISH COAT FOR THE EXTERIOR, BOTTOM FLANGE AND BEARING ASSEMBLIES OF THE FASCIA BEAMS SHALL BE "GREEN, MUNSELL NO. 7.5G 4/8.
 THE CONTRACTOR SHALL FURNISH AND INSTALL A MINIMUM OF TWO (2) AIR MONITORS FOR THIS PROJECT TO MONITOR ABRASIVE BLASTING AT THIS SITE. SEE SPECIAL PROVISION FOR "CONTAINMENT AND DISPOSAL OF LEAD PAINT CLEANING RESIDUES".



TOTAL BILL OF MATERIAL

ITEM	UNIT	SUPER	SUB	TOTAL
CLEANING AND PAINTING STEEL BRIDGE NO. 1	L SUM	1		1
CONTAINMENT AND DISPOSAL OF LEAD PAINT CLEANING RESIDUES NO. 1	L SUM	1		1
BRIDGE CLEANING AND PAINTING WARRANTY NUMBER 1	L SUM	1		1
CLEANING AND PAINTING STEEL BRIDGE NO. 2	L SUM	1		1
CONTAINMENT AND DISPOSAL OF LEAD PAINT CLEANING RESIDUES NO. 2	L SUM	1		1
BRIDGE CLEANING AND PAINTING WARRANTY NUMBER 2	L SUM	1		1

"FOR INFORMATION ONLY"