

F.A.U. RTE.	SECTION	COUNTY	TOTAL SHEETS	SHEET NO.
*	(2X,3)RS-3 & 2RS-4	CHAMPAIGN	55	1
		ILLINOIS	CONTRACT NO. 70663	

*F.A.U. 7152 & F.A.S. 1512

FOR INDEX OF SHEETS, SEE SHEET NO. 2

FOR SUMMARY OF QUANTITIES SEE SHEET NO(S) 5-14

ADDITIONAL STRUCTURE INFORMATION

HMA RESURFACING

S. N. 010-8114

STRUCTURE OMISSIONS

S. N. 010-0039

CULVERT REPLACEMENTS

PROP. S. N. 010-8156, 1 @ 12' X 4' PCBC
 PROP. S. N. 010-8157, 1 @ 12' X 4' PCBC
 PROP. S. N. 010-8158, 1 @ 7' X 4' PCBC
 PROP. S. N. 010-8159, 8' X 2' PCBC
 PROP. S. N. 010-2039, 3 @ 12' X 3' PCBC
 PROP. S. N. 010-8160, 1 @ 8' X 2' PCBC
 PROP. S. N. 010-8161, 1 @ 8' X 2' PCBC
 PROP. S. N. 010-8162, 1 @ 12' X 2' PCBC
 PROP. S. N. 010-8163, 1 @ 12' X 2' PCBC
 PROP. S. N. 010-8164, 1 @ 12' X 2' PCBC

STATE OF ILLINOIS

DEPARTMENT OF TRANSPORTATION

DIVISION OF HIGHWAYS

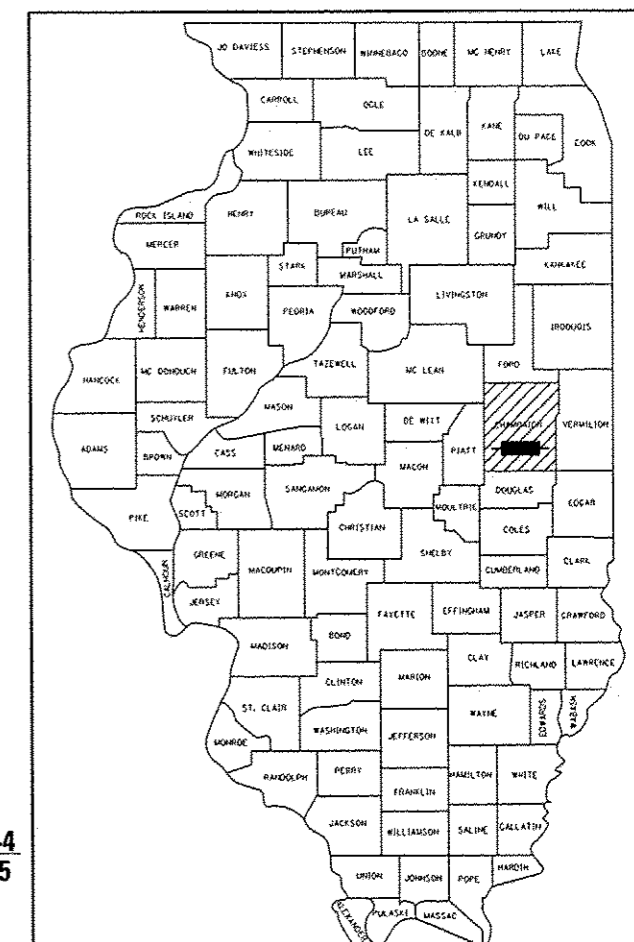
PROPOSED HIGHWAY PLANS

F.A.U. ROUTE 7152 & F.A.S. ROUTE 1512 (US 150)
 SECTION (2X,3)RS-3 & 2RS-4
 PROJECT ACM-ACRS-0005 (951)
 RESURFACING (3R)
 CHAMPAIGN COUNTY

C-95-037-07

IL 130 (S) IN URBANA TO ELM STREET IN ST. JOSEPH

D-95-037-07



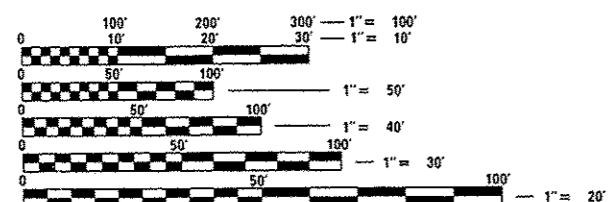
LOCATION OF SECTION INDICATED THUS:

CURRENT ADT

LEG A 5,700 2010
 LEG B 4,950 2010

DESIGN DESIGNATION

LEG A MIN. ARTERIAL/MAJ. COLLECTOR
 LEG B MAJ. COLLECTOR

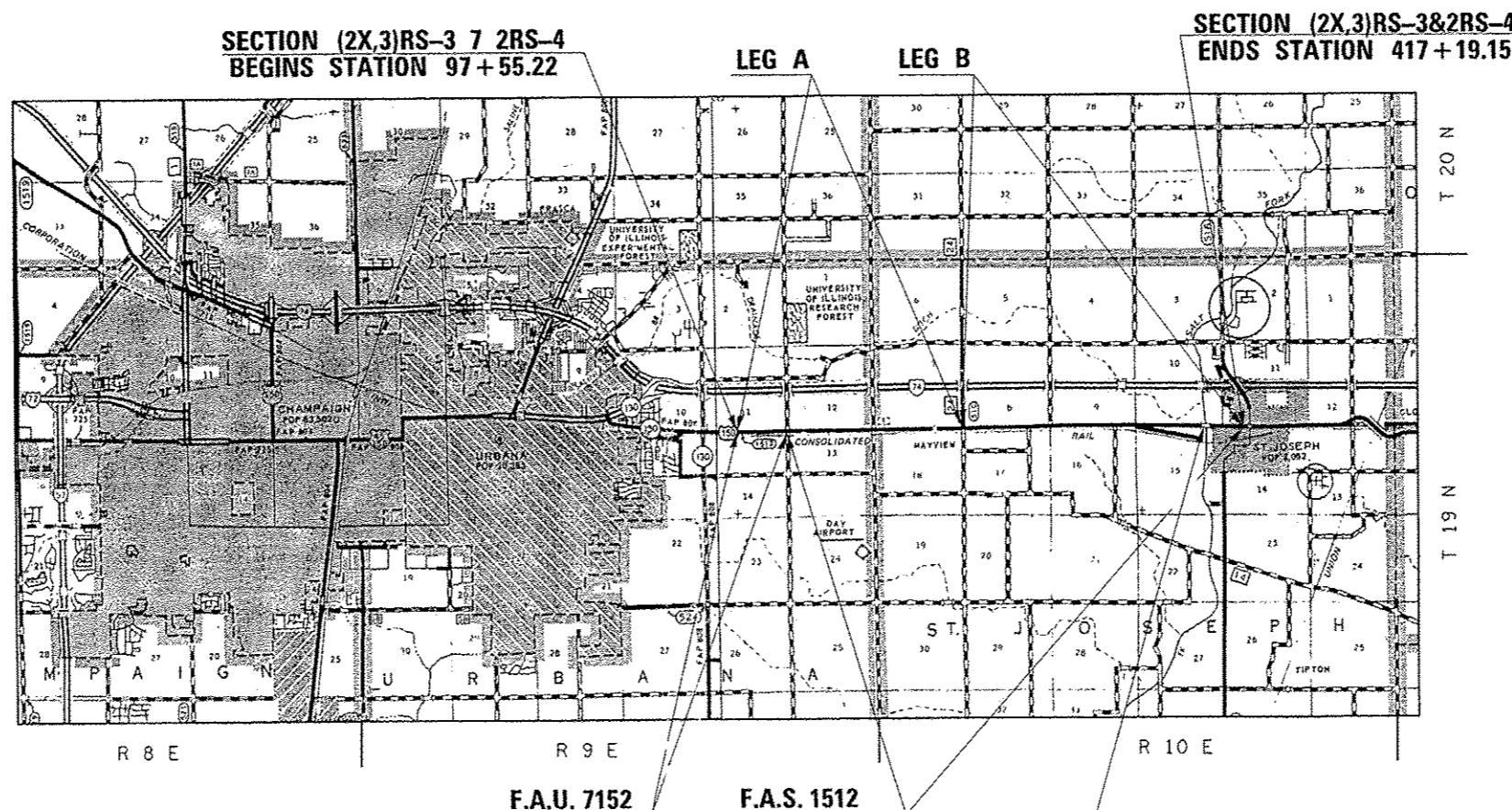


FULL SIZE PLANS HAVE BEEN PREPARED USING STANDARD ENGINEERING SCALES. REDUCED SIZED PLANS WILL NOT CONFORM TO STANDARD SCALES. IN MAKING MEASUREMENTS ON REDUCED PLANS, THE ABOVE SCALES MAY BE USED.

J.U.L.I.E.
 JOINT UTILITY LOCATION INFORMATION FOR EXCAVATION
 1-800-892-0123
 OR 811 URBANA & ST. JOSEPH TOWNSHIP

PROJECT ENGINEER: JASON STULTS
 PROJECT MANAGER: JEFF M. SHERER

CONTRACT NO. 70663



F.A.U. 7152 F.A.S. 1512

OMISSION S.N. 010-0039
 STA. 398+21.52 TO STA. 401+15.67

GROSS LENGTH = 31,963.93 FT. = 6.054 MILE
 NET LENGTH = 31,669.78 FT. = 5.998 MILE

STATE OF ILLINOIS
 DEPARTMENT OF TRANSPORTATION
 DIVISION OF HIGHWAYS

SUBMITTED October 17, 2013
Joseph E. Crowe, CHAG
 DEPUTY DIRECTOR OF HIGHWAYS, REGION ENGINEER
Dec 6 2013
John D. Baranzelli, P.E.
 ENGINEER OF DESIGN AND ENVIRONMENT
Dec 6 2013
Omer Osman, P.E.
 DIRECTOR OF HIGHWAYS, CHIEF ENGINEER

PRINTED BY THE AUTHORITY
 OF THE STATE OF ILLINOIS