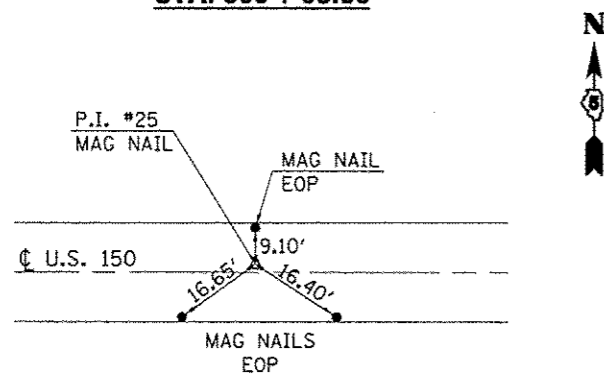
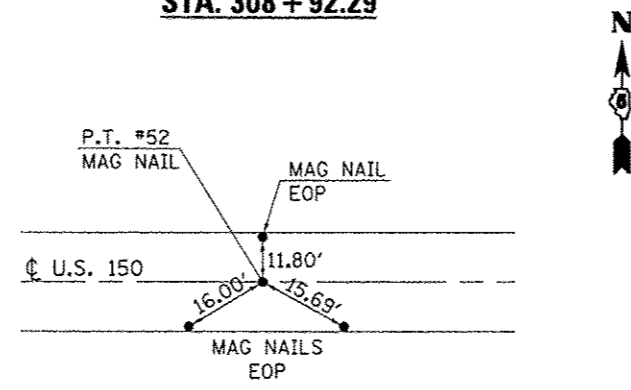


TIE POINTS

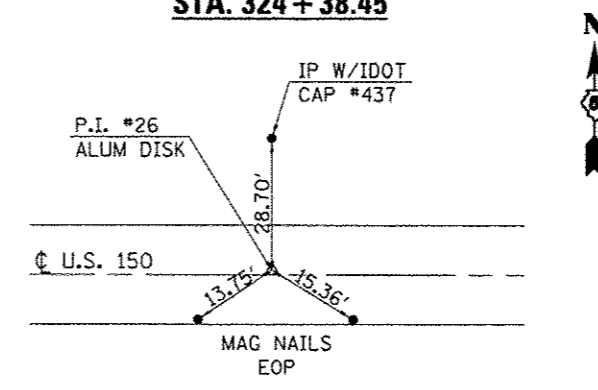
P.I. #25
STA. 306 + 63.80



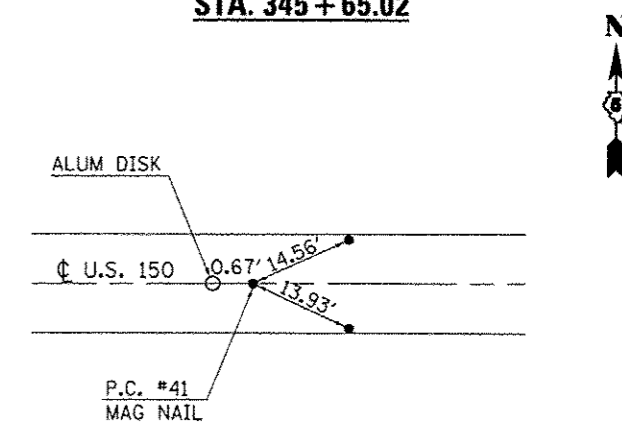
P.T. #52
STA. 308 + 92.29



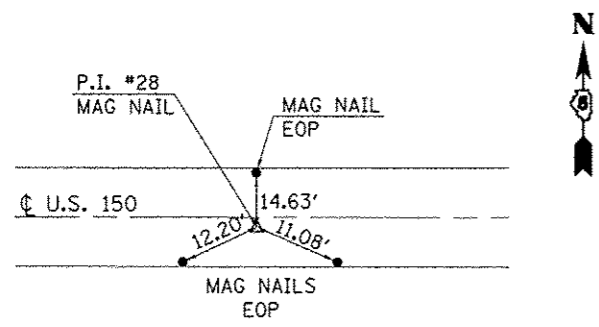
P.I. #26
STA. 324 + 38.45



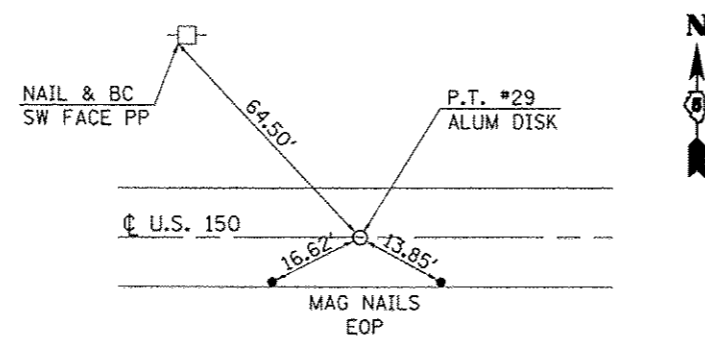
P.C. #41
STA. 345 + 65.02



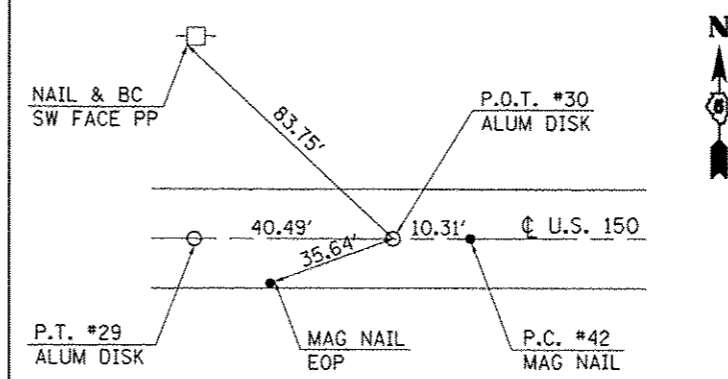
P.I. #28
STA. 348 + 18.95



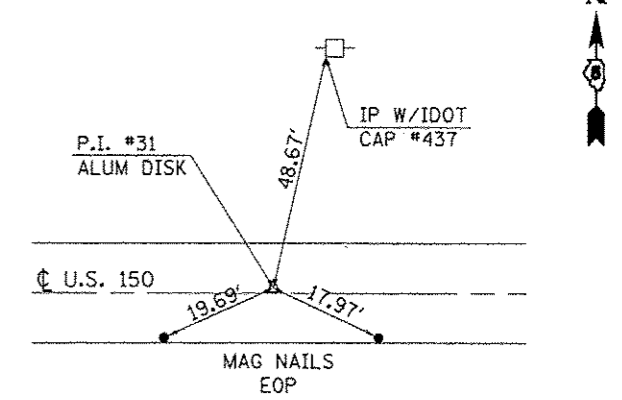
P.T. #29
STA. 350 + 72.80



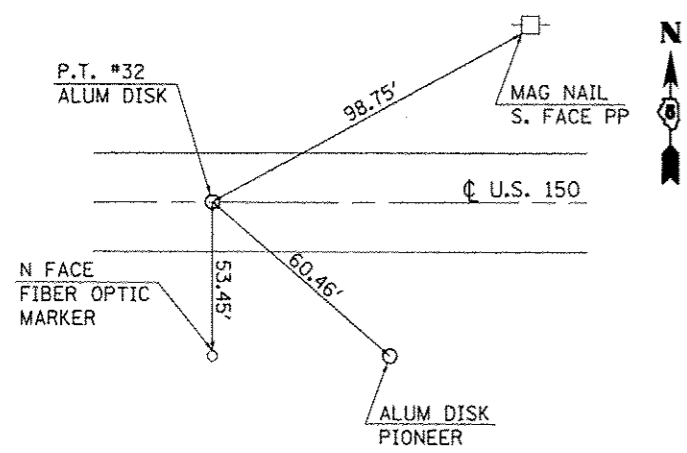
P.O.T. #30
STA. 351 + 13.28



P.I. #31
STA. 353 + 75.10



P.T. #32
STA. 356 + 26.47



P.O.T. #37
STA. 424 + 87.69

