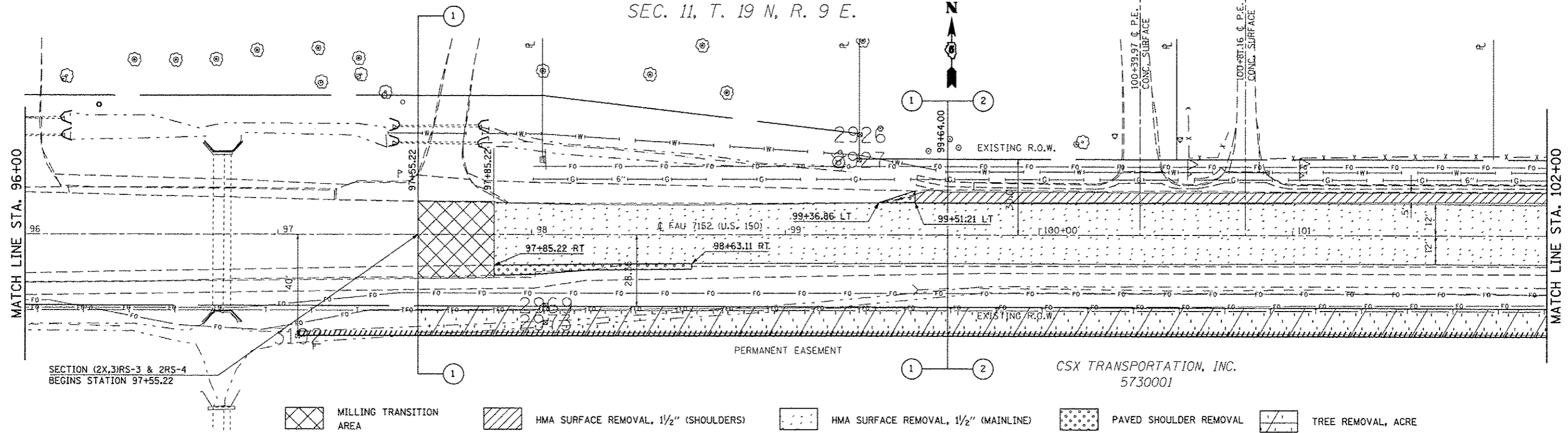


SEC. 11, T. 19 N, R. 9 E.



MATCH LINE STA. 96+00

MATCH LINE STA. 102+00



- MILLING TRANSITION AREA
- HMA SURFACE REMOVAL, 1/2" (SHOULDERS)
- HMA SURFACE REMOVAL, 1/2" (MAINLINE)
- PAVED SHOULDER REMOVAL
- TREE REMOVAL, ACRE

SEE DETAIL FOR MILLING TRANSITIONS

SEE DETAIL FOR HMA SURF. REM FOR SHOULDERS

SEC. 14, T. 19 N, R. 9 E.

DETAIL NOTE: AREA OF MILLING TRANSITION INCLUDED IN COST OF HMA SURFACE REM. 1-1/2"

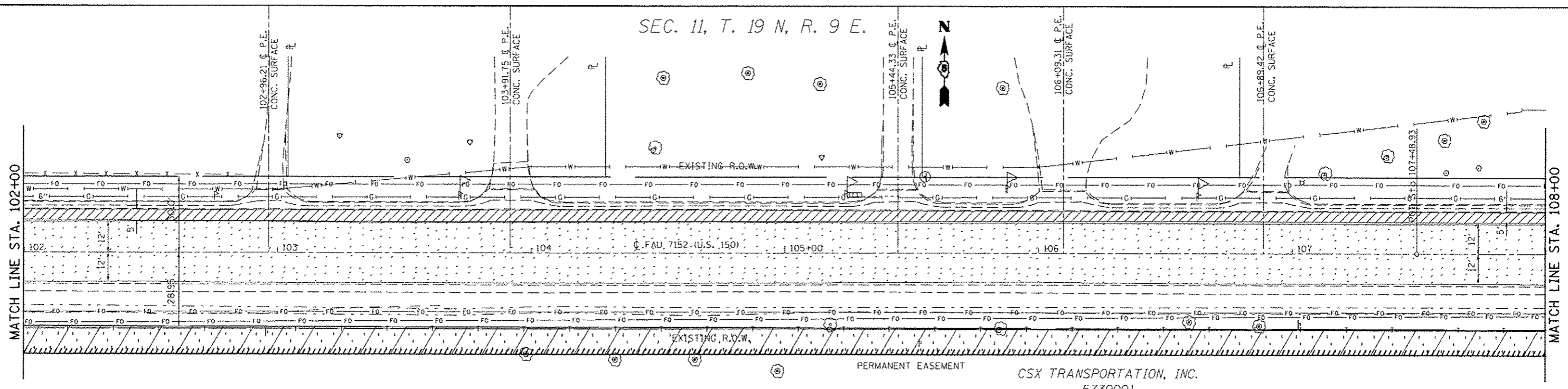
CSX TRANSPORTATION, INC.
5730001

SEC. 11, T. 19 N, R. 9 E.



MATCH LINE STA. 102+00

MATCH LINE STA. 108+00



- HMA SURFACE REMOVAL, 1/2" (SHOULDERS)
- HMA SURFACE REMOVAL, 1/2" (MAINLINE)
- TREE REMOVAL, ACRE

SEE DETAIL FOR HMA SURF. REM FOR SHOULDERS

SEC. 14, T. 19 N, R. 9 E.

CSX TRANSPORTATION, INC.
5730001

FILE NAME	USER NAME	DESIGNED	REVISED	STATE OF ILLINOIS DEPARTMENT OF TRANSPORTATION	REMOVAL DETAILS MAINLINE	F.A.U. RTE.	SECTION	COUNTY	TOTAL SHEETS	SHEET NO.
en:\pwork\p\2013\20130316\078663-shr-removal.dgn	carlock_jd	JMS	-			•	(2X,3RS-3 & 2RS-4)	CHAMPAIGN	551	43
PLOT SCALE = 48,0000 / in		JMS	-			•	FAU 7152 & FAS 1512	CONTRACT NO. 70663		
PLOT DATE = 10/18/2013		JMS	-							
					SCALE: 1:20	SHEET NO. 1 OF 27 SHEETS		STA. 97+55.22 TO STA. 108+00.00		
ILLINOIS FED. AID PROJECT										