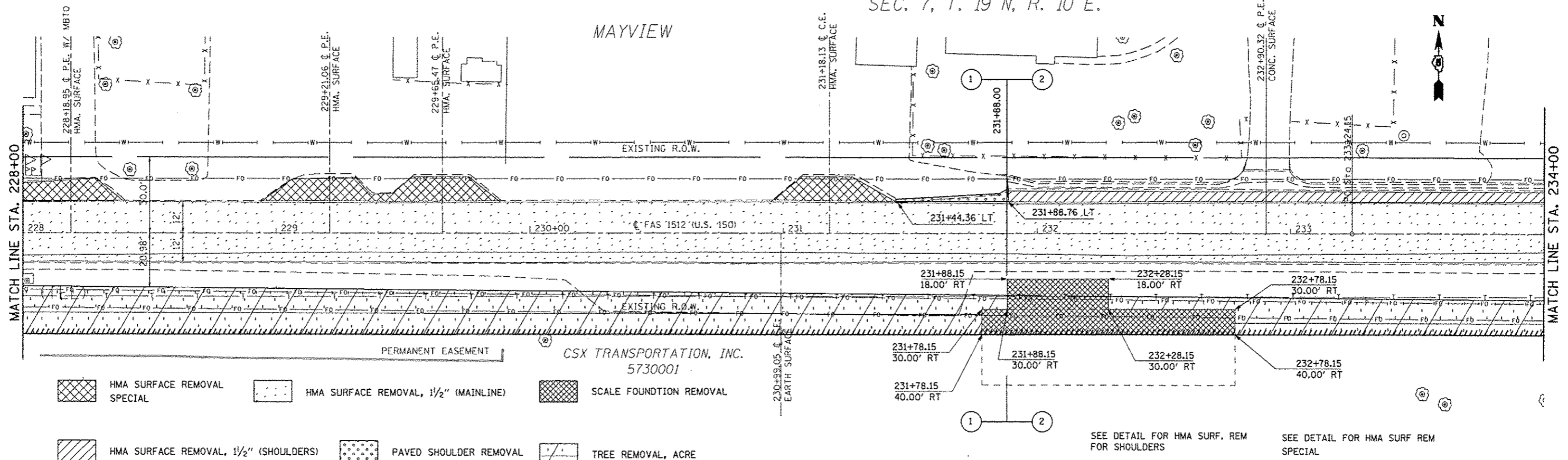


SEC. 7, T. 19 N, R. 10 E.

MAYVIEW



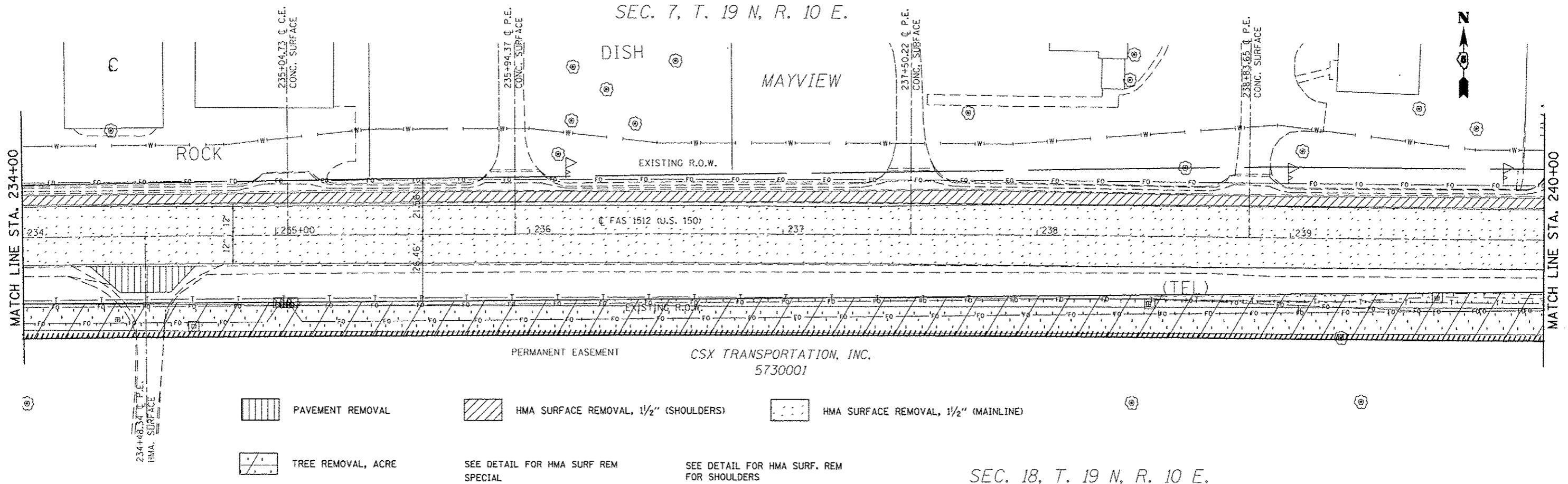
- HMA SURFACE REMOVAL SPECIAL
- HMA SURFACE REMOVAL, 1/2" (MAINLINE)
- SCALE FOUNDATION REMOVAL
- HMA SURFACE REMOVAL, 1/2" (SHOULDERS)
- PAVED SHOULDER REMOVAL
- TREE REMOVAL, ACRE

SEE DETAIL FOR HMA SURF. REM FOR SHOULDERS
SEE DETAIL FOR HMA SURF REM SPECIAL

SEC. 18, T. 19 N, R. 10 E.

SEC. 7, T. 19 N, R. 10 E.

MAYVIEW



- PAVEMENT REMOVAL
- HMA SURFACE REMOVAL, 1/2" (SHOULDERS)
- HMA SURFACE REMOVAL, 1/2" (MAINLINE)
- TREE REMOVAL, ACRE
- SEE DETAIL FOR HMA SURF REM SPECIAL
- SEE DETAIL FOR HMA SURF. REM FOR SHOULDERS

SEC. 18, T. 19 N, R. 10 E.

FILE NAME: c:\pwork\pwork\ccon\lock_jd\0120316\0120316.sht	USER NAME: ccon\lock_jd	DESIGNED: JMS	REVISED:	STATE OF ILLINOIS DEPARTMENT OF TRANSPORTATION	REMOVAL DETAILS US 150 MAINLINE	F.A.U. RTE.	SECTION	COUNTY	TOTAL SHEETS	SHEET NO.	
PLOT SCALE: 40,000' / in.	DRAWN: JMS	CHECKED:	REVISED:			FAU 7152 & FAS 1512	(2X,3RS-3 & 2RS-4)	CHAMPAIGN	551	54	
PLOT DATE: 10/10/2013	DATE: 051011	REVISED:	REVISED:			CONTRACT NO. 70663		ILLINOIS FED. AID PROJECT			
		REVISED:	REVISED:			SCALE: 1:20	SHEET NO. 12 OF 27 SHEETS	STA. 228+00.00 TO STA. 240+00.00			