

28-22-08-376-002
WOLFE, WALTER F.
WOLFE, JANET L.
5730014

SEC. 8, T. 19 N, R. 10 E.

28-22-08-376-001
WOLFE, WALTER F.
WOLFE, JANET L.

28-22-08-300-08
LUEBCHOW, KEVIN H.
LUEBCHOW, PAIGE L.
5730015

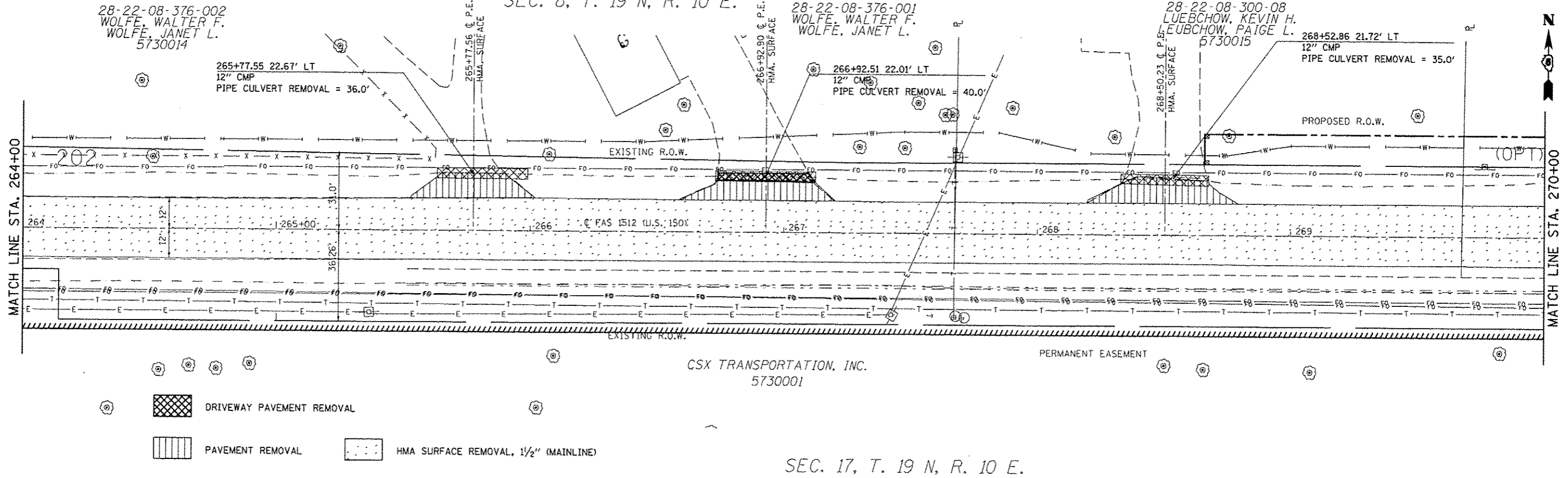
265+77.55 22.67' LT
12" CMP
PIPE CULVERT REMOVAL = 36.0'

266+92.51 22.01' LT
12" CMP
PIPE CULVERT REMOVAL = 40.0'

268+52.86 21.72' LT
12" CMP
PIPE CULVERT REMOVAL = 35.0'

MATCH LINE STA. 264+00

MATCH LINE STA. 270+00

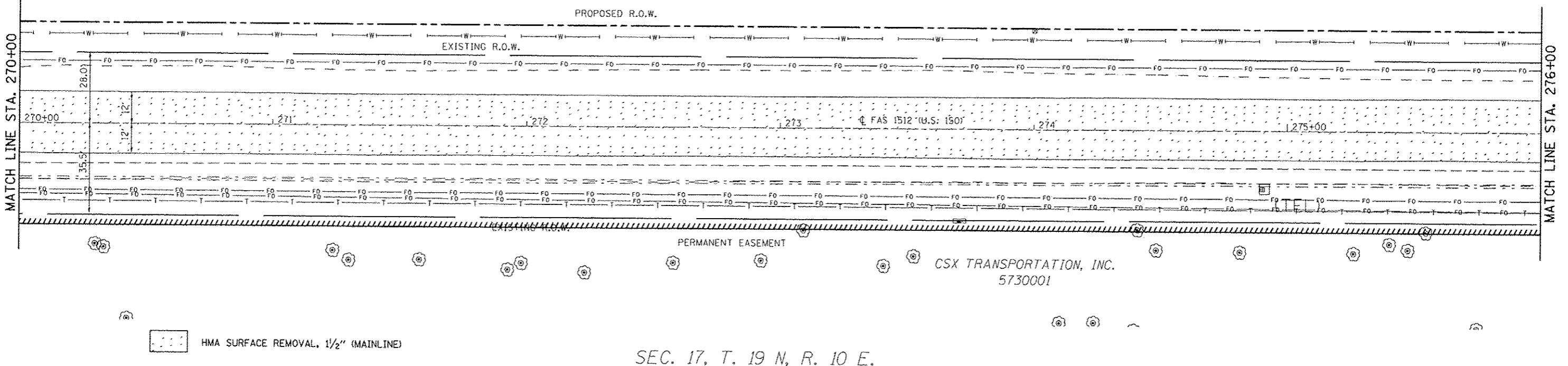


- DRIVEWAY PAVEMENT REMOVAL
- PAVEMENT REMOVAL
- HMA SURFACE REMOVAL, 1/2" (MAINLINE)

SEC. 17, T. 19 N, R. 10 E.

SEC. 8, T. 19 N, R. 10 E.

28-22-08-300-013
BUSBOOM, DALE H.
BUSBOOM, LORETTA J.
AS TRUSTEE
5730016



- HMA SURFACE REMOVAL, 1/2" (MAINLINE)

SEC. 17, T. 19 N, R. 10 E.

FILE NAME : et:\pwork\psdot\csearlock\28120316\0378663-shr-removal.dgn	USER NAME : csearlock_jd	DESIGNED - JMS	REVISED -	STATE OF ILLINOIS DEPARTMENT OF TRANSPORTATION	REMOVAL DETAILS US 150 MAINLINE			F.A.U. RTE.	SECTION	COUNTY	TOTAL SHEETS	SHEET NO.
PLT SCALE = 40.0000' / 1" =	PLT DATE = 10/10/2013	DRAWN - JMS	REVISED -		SCALE: 1:20	SHEET NO. 15 OF 27 SHEETS	STA. 264+00.00 TO STA. 276+00.00	• (2X,3RS-3 & 2RS-4	CHAMPAIGN	551	57	
		CHECKED -	REVISED -					• FAU 7152 & FAS 1512				CONTRACT NO. 70663
		DATE - 051011	REVISED -									