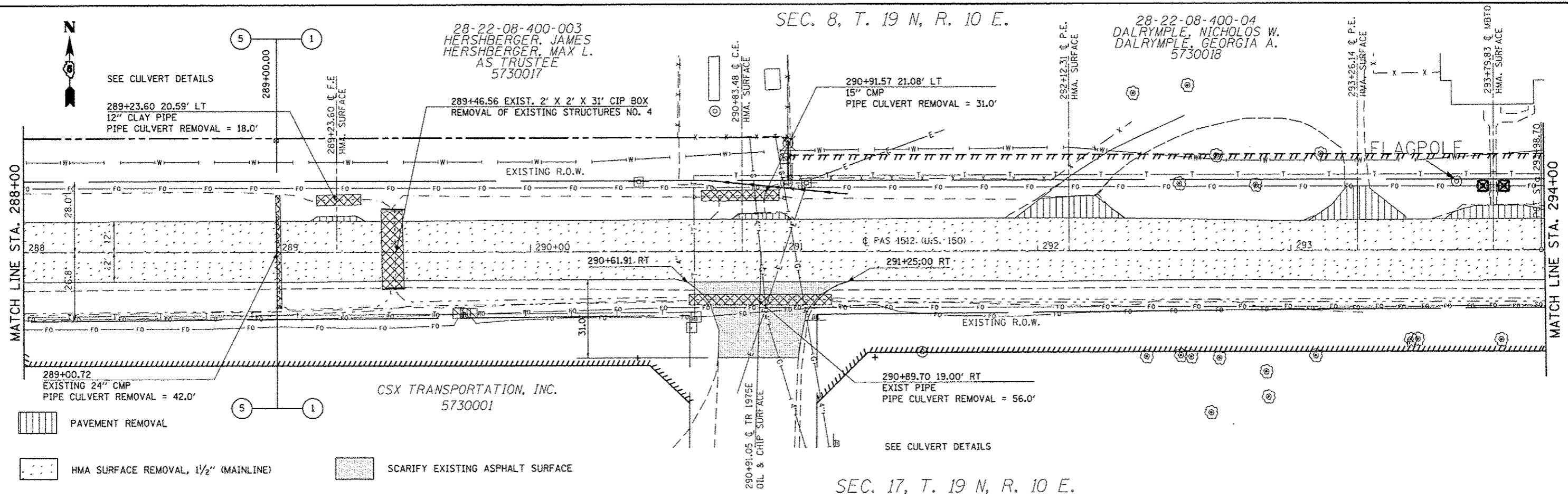
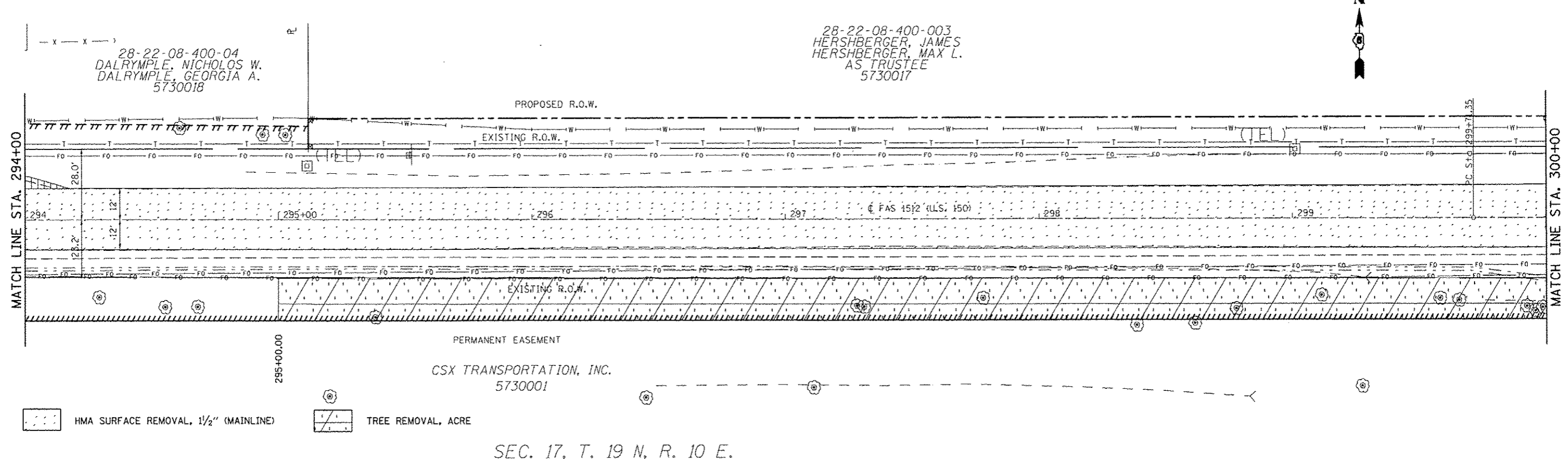


SEC. 8, T. 19 N, R. 10 E.



SEC. 17, T. 19 N, R. 10 E.

SEC. 8, T. 19 N, R. 10 E.



SEC. 17, T. 19 N, R. 10 E.

FILE NAME =	USER NAME = ceer-lockjd	DESIGNED - JMS	REVISED -	STATE OF ILLINOIS DEPARTMENT OF TRANSPORTATION	REMOVAL DETAILS US 150 MAINLINE	F.A.U. RTE.	SECTION	COUNTY	TOTAL SHEETS	SHEET NO.	
c:\pwork\pwork\ceer-lockjd\0120316\28663-ant-removal.dgn	PLOT SCALE = 40.00000 / in.	DRAWN - JMS	REVISED -			• FAU 7152 & FAS 1512	(2X,3IRS-3 & 2RS-4)	CHAMPAIGN	551	59	
	PLOT DATE = 10/18/2013	CHECKED -	REVISED -			SCALE: 1:20	SHEET NO. 17 OF 27 SHEETS	CONTRACT NO. 70663	ILLINOIS FED. AID PROJECT		
		DATE - 051011	REVISED -			STA. 289+00.00 TO STA. 300+00.00					