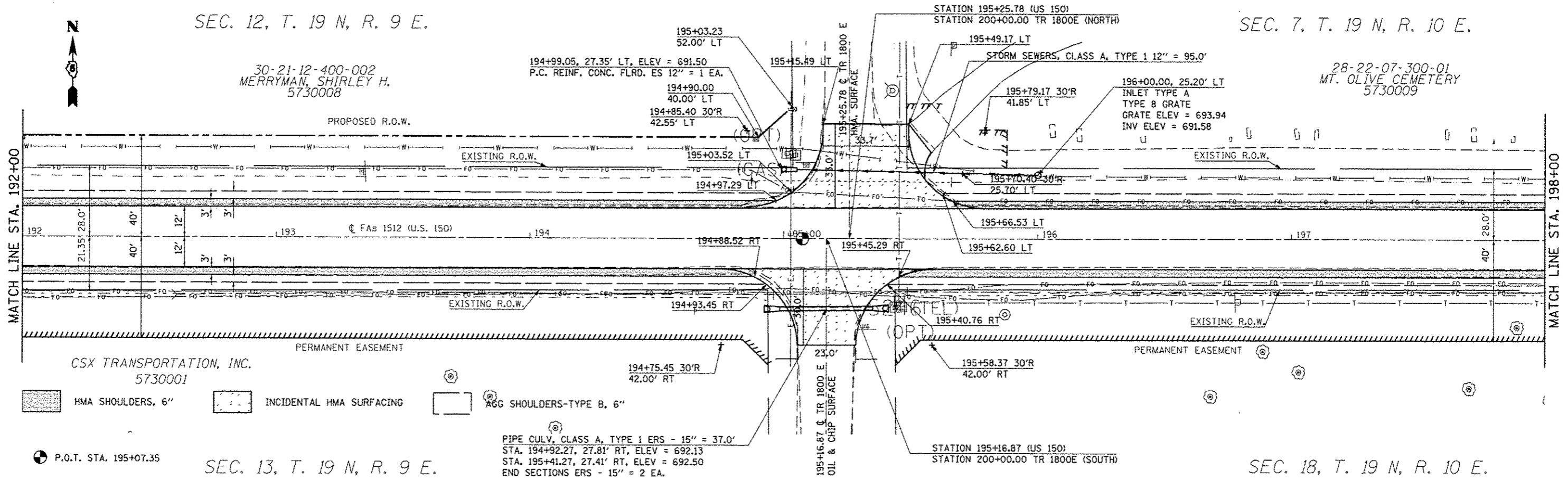


SEC. 12, T. 19 N, R. 9 E.

SEC. 7, T. 19 N, R. 10 E.

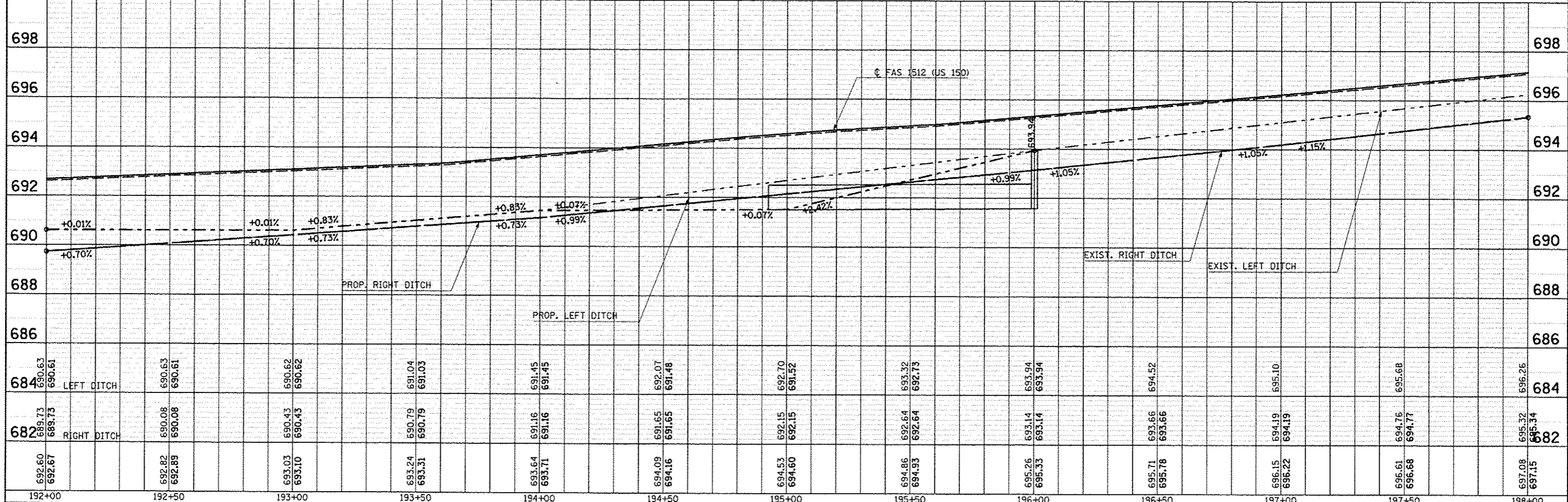
30-21-12-400-002
MERRYMAN, SHIRLEY H.
5730008

28-22-07-300-01
MT. OLIVE CEMETERY
5730009



SEC. 13, T. 19 N, R. 9 E.

SEC. 18, T. 19 N, R. 10 E.



DATE	
BY	
REVISION	
NO.	
DATE	
BY	
REVISION	
NO.	

DATE	
BY	
REVISION	
NO.	
DATE	
BY	
REVISION	
NO.	

FILE NAME	USER NAME	DESIGNED	REVISION	<p align="center">STATE OF ILLINOIS DEPARTMENT OF TRANSPORTATION</p> <p align="center">US 150 MAINLINE PLAN AND PROFILE SHEET</p>	F.A.U. RTE.	SECTION	COUNTY	TOTAL SHEETS	SHEET NO.
ci:\pwwork\pwwork\cncarlock\j\120316\0570663-shr-plnpr.f.dgn	cncarlock_j	JMS	-		• (2X,3)RS-3 & 2RS-4	Champaign	551	98	
PLT SCALE = 48.0000' / in.		JMS	-		• F.A.U. 7152 & F.A.S. 1512			CONTRACT NO. 70663	
PLT DATE = 10/10/2013		JMS	-		ILLINOIS FED. AID PROJECT				
		DATE	081610	SCALE: 1" = 20'	SHEET NO. 17 OF 54 SHEETS	STA. 192+00.00 TO STA. 198+00.00			