

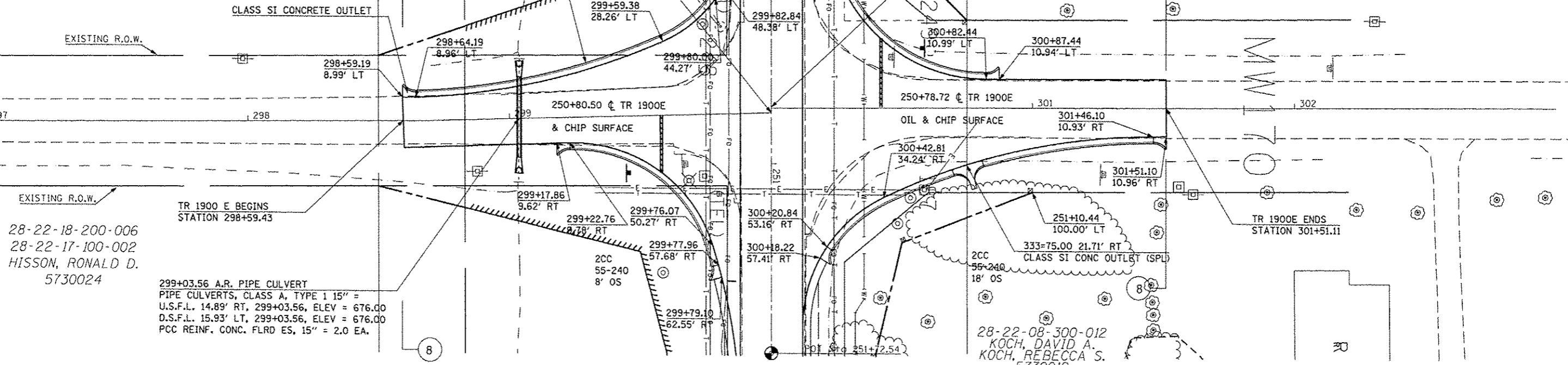
CSX TRANSPORTATION, INC.  
5730001 & 5730025

28-22-07-476-014  
ORDAL, JORDAN  
5730011



DATE	
BY	
REVISIONS	
NO.	
PLAN	
NO.	
NOTE BOOK	
NO.	
NO.	
NO.	
NO.	

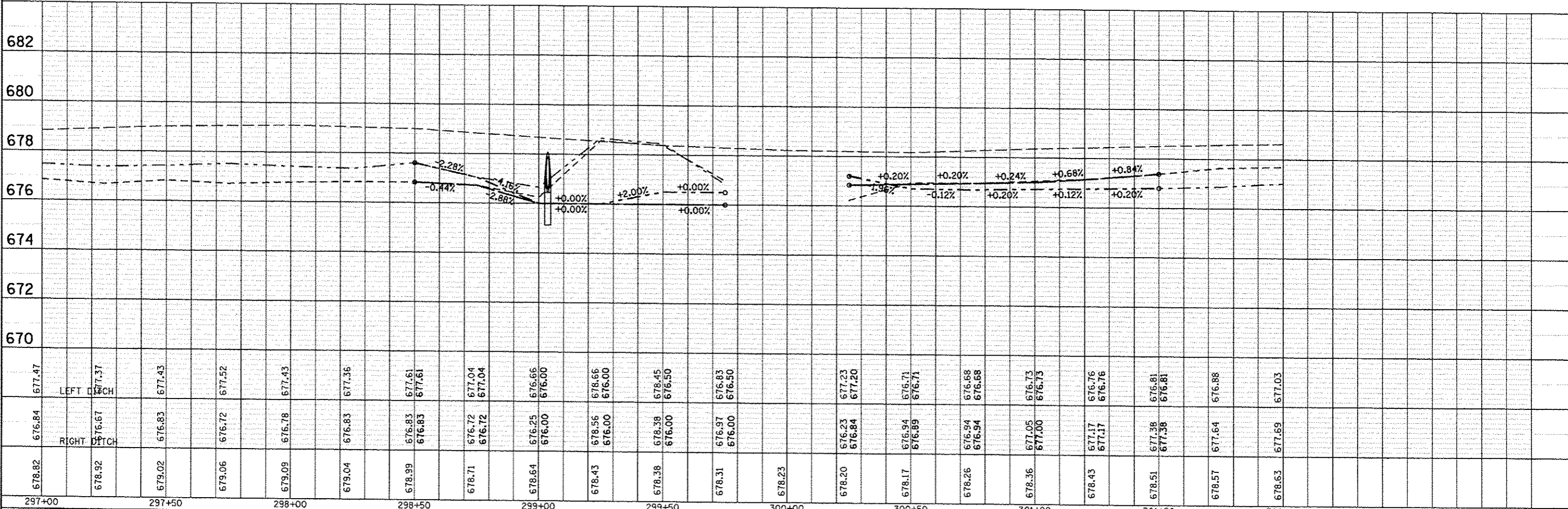
DATE	
BY	
REVISIONS	
NO.	
PROFILE	
NO.	
NOTE BOOK	
NO.	
NO.	
NO.	
NO.	



28-22-18-200-006  
28-22-17-100-002  
HISSON, RONALD D.  
5730024

299+03.56 A.R. PIPE CULVERT  
PIPE CULVERTS, CLASS A, TYPE 1 15" =  
U.S.F.L. 14.89' RT, 299+03.56, ELEV = 676.00  
D.S.F.L. 15.93' LT, 299+03.56, ELEV = 676.00  
PCC REINF. CONC. FLRD ES, 15" = 2.0 EA.

28-22-08-300-012  
KOCH, DAVID A.  
KOCH, REBECCA S.  
5730012



FILE NAME =	USER NAME = cbarlock_jd	DESIGNED JMS	REVISED -	STATE OF ILLINOIS DEPARTMENT OF TRANSPORTATION	T.R. 1900E PLAN & PROFILE	F.A.U. SECTION COUNTY TOTAL SHEETS NO. • (2X,3RS-3 & 2RS-4) Champaign 551 140 • F.A.U. 7152 & F.A.S. 1512 CONTRACT NO. 70663
DRAWN JMS	CHECKED -	REVISED -				
PLOT SCALE = 48.88888' / in.	DATE 081610	REVISED -				
PLOT DATE = 10/18/2013		REVISED -				
SCALE: 1" = 20'		SHEET NO. 1 OF 1 SHEETS		STA. 297+00.00 TO STA. 303+00.00		ILLINOIS FED. AID PROJECT