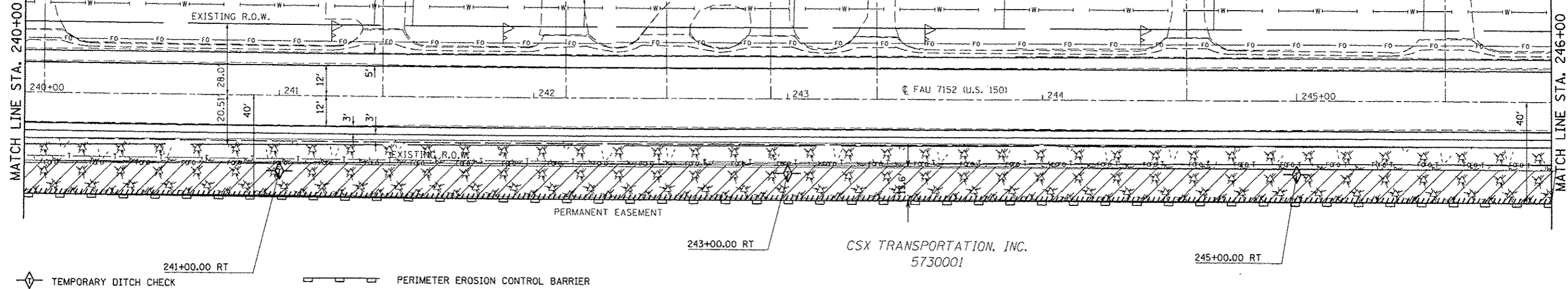


SEC. 7, T. 19 N, R. 10 E.

MAYVIEW



- SEEDING, CLASS 2
- SEEDING, CLASS 7
- MULCH METHOD 2
- SEEDING, CLASS 4 & 5A

SEC. 18, T. 19 N, R. 10 E.

SEC. 7, T. 19 N, R. 10 E.

MAYVIEW

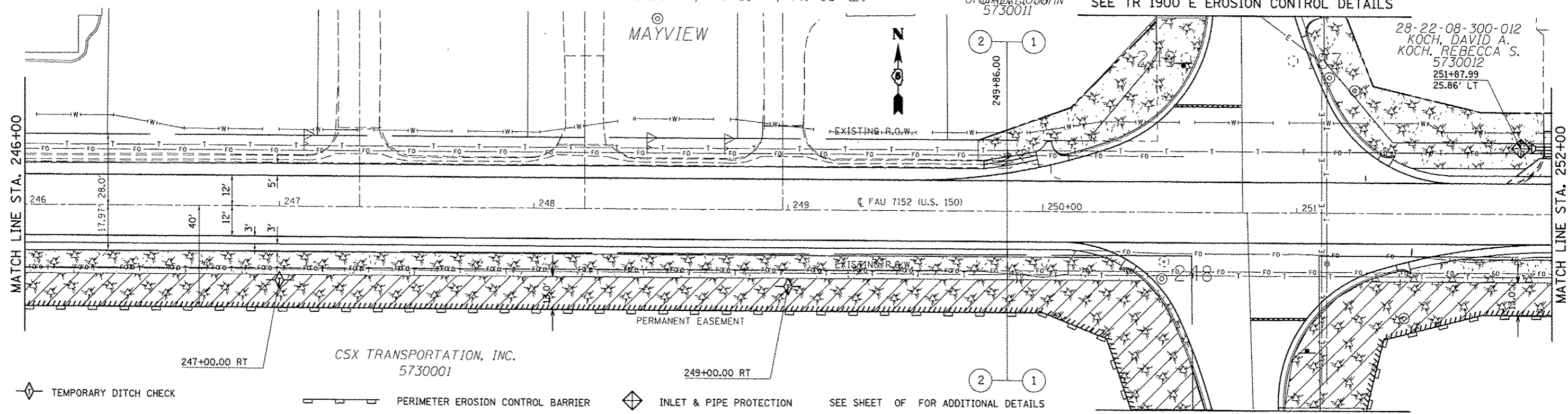


282220761701013
 ORIGINAL JOHN
 5730011

SEE TR 1900 E EROSION CONTROL DETAILS

SEC. 8, T. 19 N, R. 10 E.

28-22-08-300-012
 KOCH, DAVID A.
 KOCH, REBECCA S.
 5730012
 251+87.99
 25.86' LT



- SEEDING, CLASS 2
- SEEDING, CLASS 7
- MULCH METHOD 2
- SEEDING, CLASS 4 & 5A

SEC. 18, T. 19 N, R. 10 E.

SEE TR 1900 E EROSION CONTROL DETAILS

SEC. 17, T. 19 N, R. 10 E.

FILE NAME :	USER NAME : ceo-lock_jd	DESIGNED -	REVISED -	STATE OF ILLINOIS DEPARTMENT OF TRANSPORTATION	EROSION CONTROL DETAILS US 150 MAINLINE	F.A.U. RTE.	SECTION	COUNTY	TOTAL SHEETS	SHEET NO.
ci:\pwork\p\p\dat\ceo-lock_jd\20120316\0678863-shr-erosioncontrol.dgn	78863-shr-erosioncontrol.dgn	DRAWN -	REVISED -			• (2X,3RS-3 & 2RS-4	Champaign	551	156	
PLOT SCALE = 1/8" = 1'-0"		CHECKED -	REVISED -			• F.A.U. 7152 & F.A.S. 1512	CONTRACT NO. 70663			
PLOT DATE = 10/10/2013		DATE -	REVISED -			ILLINOIS FED. AID PROJECT				
					SCALE: 1:20	SHEET NO. 13 OF 23 SHEETS		STA. 240+00.00 TO STA. 252+00.00		