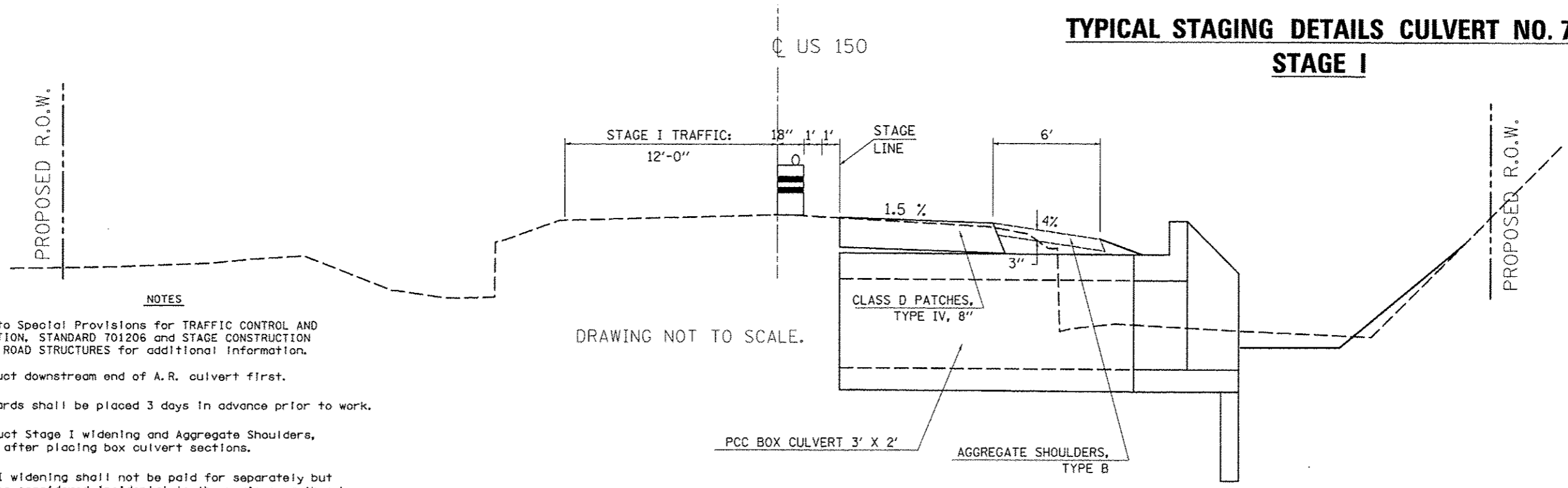


TYPICAL STAGING DETAILS CULVERT NO. 7

STAGE I



NOTES

1. Refer to Special Provisions for TRAFFIC CONTROL AND PROTECTION, STANDARD 701206 and STAGE CONSTRUCTION ACROSS ROAD STRUCTURES for additional information.
2. Construct downstream end of A.R. culvert first.
3. CMS boards shall be placed 3 days in advance prior to work.
4. Construct Stage I widening and Aggregate Shoulders, Type B after placing box culvert sections.
5. Stage I widening shall not be paid for separately but shall be considered incidental to the various earthwork pay items associated with the project.

A. R. CULVERT LOCATION	TRAFFIC CONTROL STANDARD	ESTIMATED TIME	CHANGEABLE MESSAGE SIGNS
STA. 219+96.00	701206	1 Day - 24 hrs. - Non-Stop (1) - 12 hr. Day Shift (1) - 12 hr. Night Shift	2 EACH AT 2.0 CAL DAY = 4.0 CAL DAY

TYPICAL STAGING DETAILS CULVERT NO. 7

STAGE II

