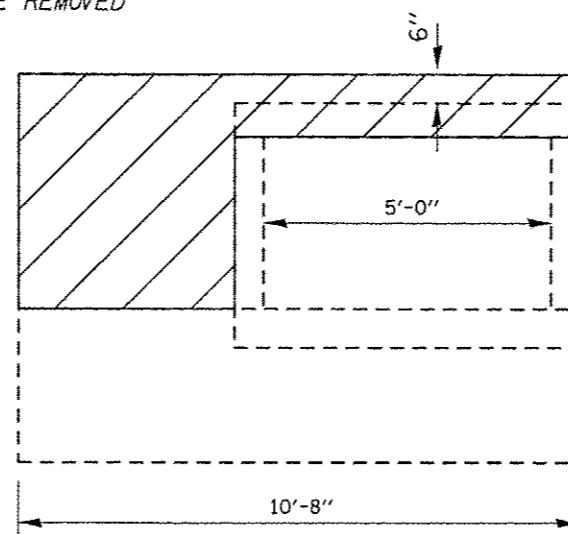
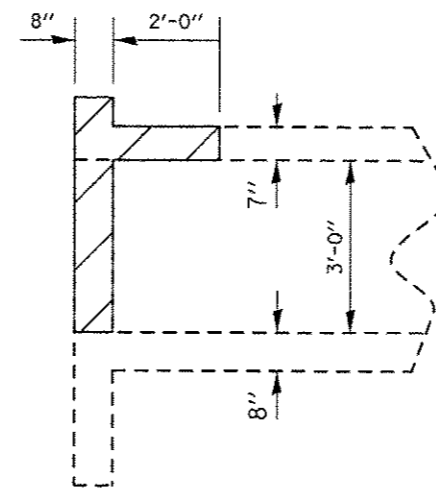


UPSTREAM END ELEVATION



DOWNSTREAM END ELEVATION

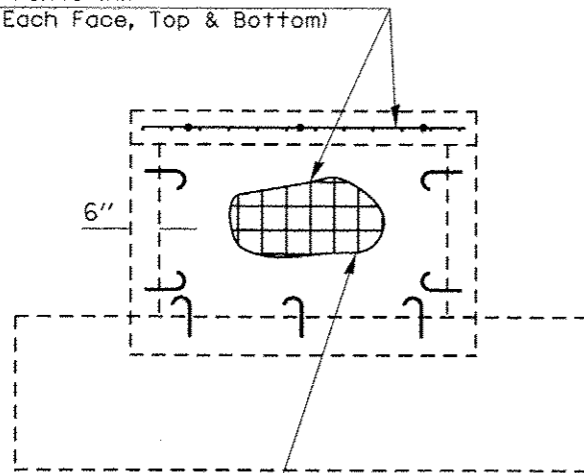


LONGITUDINAL SECTION

CONCRETE REMOVAL

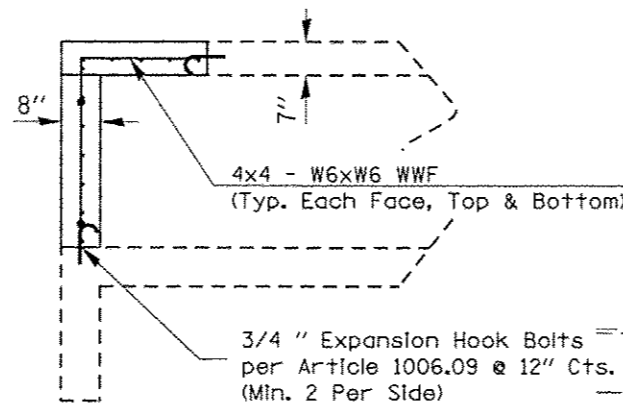
- CONCRETE REMOVAL
- CLSM AREA (SEE PLAN VIEW)

4x4 - W6xW6 WWF
(Typ. Each Face, Top & Bottom)

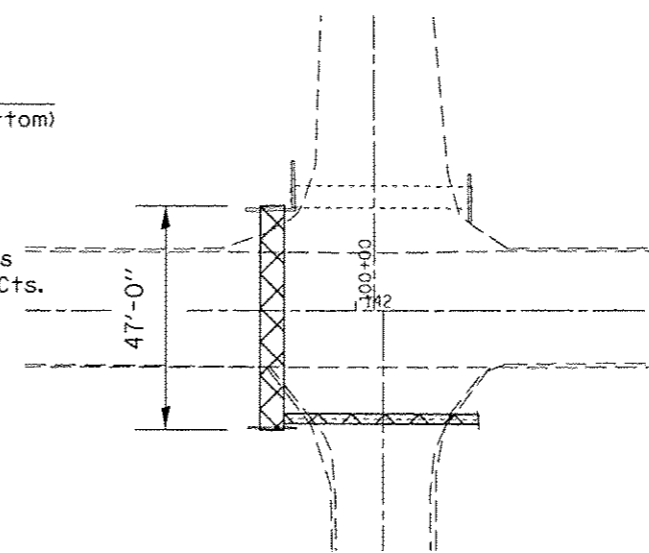


END ELEVATION (CAPPING)

3/4 " Expansion Hook Bolts
per Article 1006.09 @ 12" Cts.
(Min. 2 Per Side)



LONGITUDINAL SECTION



PLAN VIEW

CONCRETE BOX CULVERTS

DETAIL NOTES:

BOX CULVERTS SHALL BE CLEANED BY THE CONTRACTOR PRIOR TO FILLING. THE CONTRACTOR SHALL ESTABLISH A SUITABLE PLAN FOR CLEANING THE EXISTING BOX CULVERTS TO THE SATISFACTION OF THE ENGINEER.

REMOVAL OF EXISTING HEADWALLS AND PORTIONS OF THE EXISTING BOX CULVERT SHALL BE REMOVED PRIOR TO FILLING.

ALL MEASUREMENTS AND DIMENSIONS ARE BASED ON AS-BUILT PLAN INFORMATION. ALL DIMENSIONS AND MEASUREMENTS SHALL BE VERIFIED BY THE ENGINEER PRIOR TO REMOVAL. THE ENGINEER MAY MODIFY THE REMOVAL AREAS.

EXPANSION BOLTS SHALL CONSIST OF SELF DRILLING EXPANSION SHIELDS & 3/4" DIA. HOOKED BOLTS. BOLTS SHALL EXTEND A MINIMUM OF 9" INTO EXISTING CONCRETE.

ALL COSTS ASSOCIATED WITH CLEANING THE EXISTING BOX CULVERTS, CONCRETE REMOVAL, EXPANSION BOLTS, WELDED WIRE FABRIC, CONCRETE BOX CULVERTS, CONTROLLED LOW STRENGTH MATERIAL WILL NOT BE MEASURED FOR PAYMENT BUT SHALL BE INCLUDED IN THE CONTRACT UNIT PRICE OF CU YDS FOR CONTROLLED LOW STRENGTH MATERIAL. NO ADDITIONAL COMPENSATION WILL BE ALLOWED.

EXISTING 30" CMP SHALL BE REMOVED FROM SIDE OF EXISTING BOX AND HOLE SHALL BE CAPPED TO SATISFACTION OF ENGINEER PRIOR TO FILLING WITH CLSM. COST SHALL BE INCLUDED IN UNIT PRICE FOR CONTROLLED LOW STRENGTH MATERIAL.

(FOR INFORMATION ONLY)

TOTAL BILL OF MATERIAL

Item	Unit	Total
BOX CULVERTS TO BE CLEANED	FOOT	47.0
CONCRETE REMOVAL	CU YD	2.1
3/4" EXP. BOLTS	EACH	20.0
WELDED WIRE FABRIC	SQ FT	54.0
CONCRETE BOX CULVERTS	Each	1.3

METHOD OF PAYMENT

Item	Unit	Total
CONTROLLED LOW STRENGTH MATERIAL	CU YD	15.0

DRAWING NOT TO SCALE

FILE NAME: c:\pwwork\pwwork\ceerlock_jd\120316\070663-shr-detail1.dgn	USER NAME: ceerlock_jd	DESIGNED: JMS	REVISED: -	STATE OF ILLINOIS DEPARTMENT OF TRANSPORTATION	DETAIL OF FILLING AND CAPPING STA. 142 + 03.88			F.A.U. RTE.:	SECTION:	COUNTY:	TOTAL SHEETS:	SHEET NO.:
PLLOT SCALE: = 48.0000 / 1"	PLLOT DATE: = 10/19/2013	DRAWN: JMS	REVISED: -		SCALE: NONE	SHEET NO. 1 OF 1 SHEETS	STA.	TO STA.	• F.A.U. 7152 & F.A.S. 1512	CHAMPAIGN	551	242
		CHECKED: -	REVISED: -									
		DATE: 062911	REVISED: -									