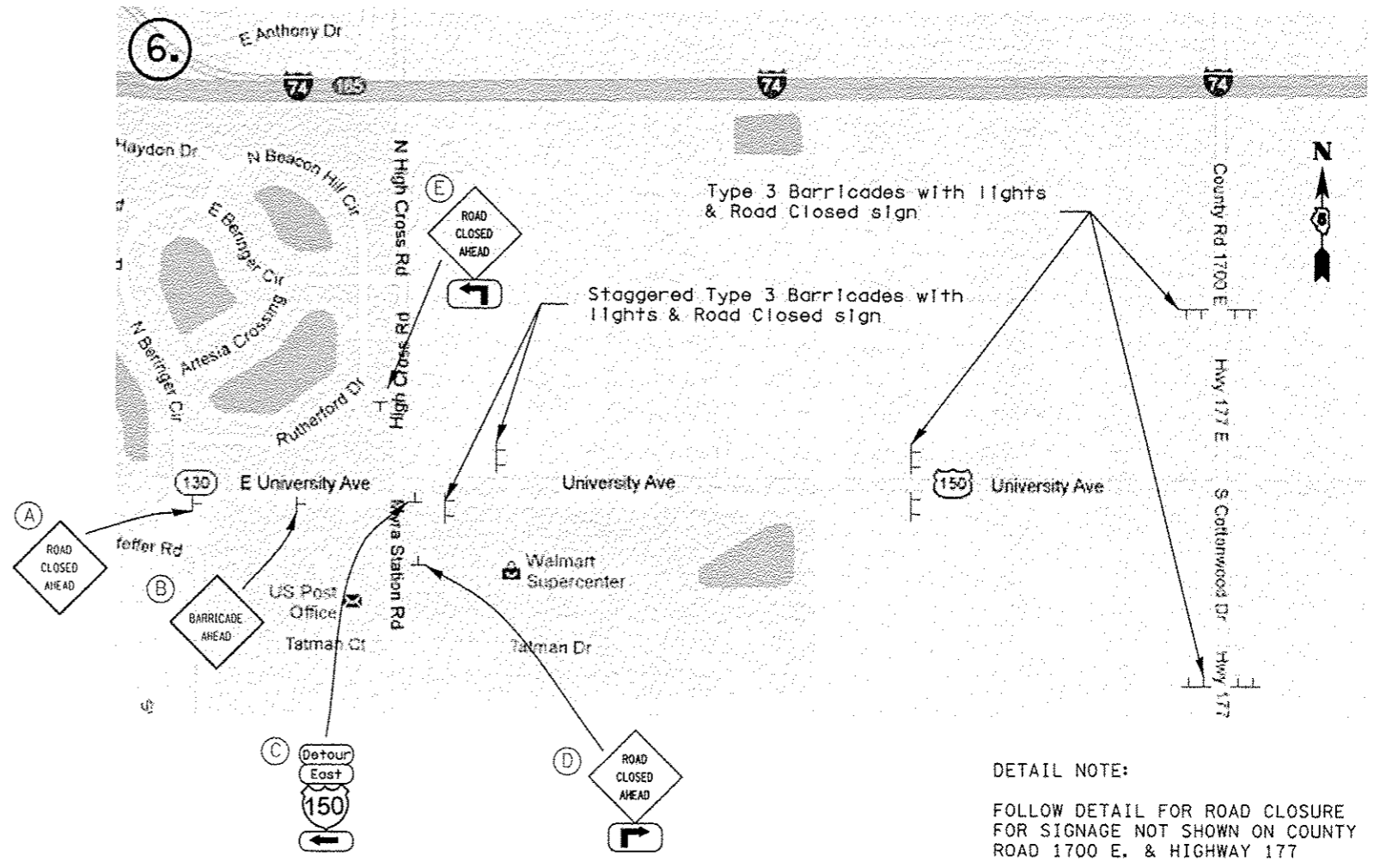
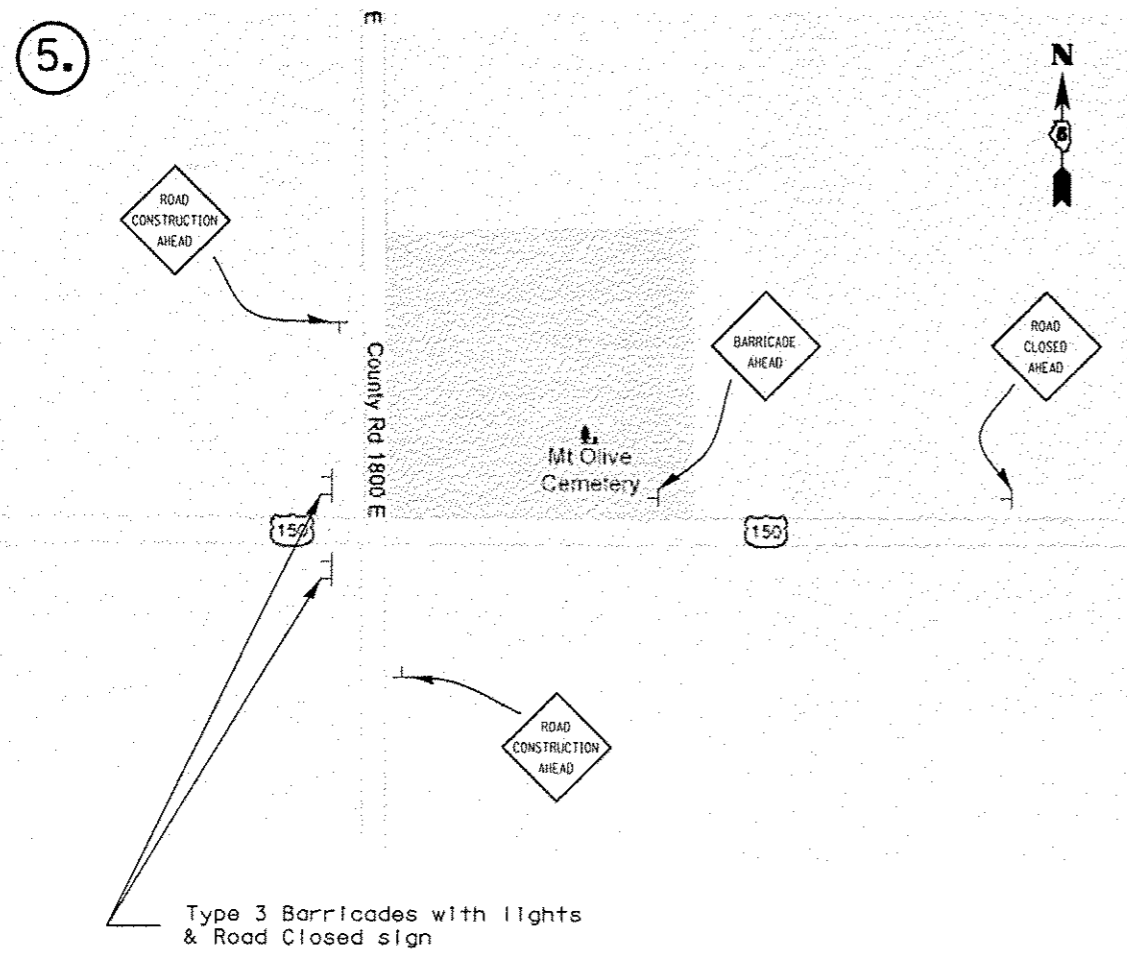


FIGURE A.



DETAIL NOTE:  
 FOLLOW DETAIL FOR ROAD CLOSURE  
 FOR SIGNAGE NOT SHOWN ON COUNTY  
 ROAD 1700 E. & HIGHWAY 177

- (A) Erect between Speed Limit 45 mph & Signal Ahead signs
- (B) Erect by South IL 130 Preturn sign
- (C) Erect beside US 150/IL 130 to I-74 sign tree
- (D) Erect just South of Urbana St Joseph sign
- (E) Erect just prior to start of Left Turn lane

FILE NAME =	USER NAME = ceer-lock.jr	DESIGNED = JMS	REVISED =	<b>STATE OF ILLINOIS DEPARTMENT OF TRANSPORTATION</b>	<b>DETAIL OF ROAD CLOSURE DETOUR</b>		F.A.U. RTE.	SECTION	COUNTY	TOTAL SHEETS	SHEET NO.	
03:\pe_work\puidot\ceer-lock.jr\0120315\01	0663-shit-data1.dgn	DRAWN = JMS	REVISED =				• (2X,3)RS-3 & 2RS-4	CHAMPAIGN	551	273		
	PLOT SCALE = 40.0000 / in.	CHECKED =	REVISED =		• F.A.U. 7152 & F.A.S. 1512	CONTRACT NO. 70663						
	PLOT DATE = 12/18/2013	DATE = 062911	REVISED =		ILLINOIS FED. AID PROJECT							
					SCALE: NONE	SHEET NO. 4 OF 4 SHEETS	STA.	TO STA.				