



SE 1/4 SEC. 11, T. 19 N., R. 9 E. OF 3RD P.M.

SW 1/4 SEC. 12, T. 19 N., R. 9 E. OF 3RD P.M.

NOTES
 BEARINGS BASED ON ILLINOIS STATE PLANE COORDINATES, EAST ZONE NAD 83 (2007 ADJ.)
 (O) RIGHT OF WAY MARKER FOUND
 (●) IRON PIN OR PIPE FOUND
 (X) CHISELED "X" FOUND
 () RECORD DATA
 FIELD WORK COMPLETED = OCTOBER 2012
 FAU ROUTE 7152 DESIGNATION CHANGES TO FAS ROUTE 1512 AT US ROUTE 150 STATION 142+05.75

NE COR. SE 1/4 SEC. 11-19-9
 FOUND CHISELED "X" SET BY
 PLS #2123 PER MONUMENT RECORD
 DOCUMENT NO. 95R06127

5730005
 DOCUMENT NO. 2008-256742 WARRANTY DEED (CORPORATION)
FRED J. SMITH AND PATRICIA D. SMITH
 TOTAL ROW AREA REQUIRED = 4.236 AC.±
 AREA IN EXISTING ROW = 3.285 AC.±
 NET ROW AREA REQUIRED = 0.951 AC.±
 ESTIMATED REMAINING AREA = 87.764 AC.±

5730004
 DOCUMENT NO. 2008-256742 WARRANTY DEED (CORPORATION)
WARREN RITTENHOUSE
 TOTAL ROW AREA REQUIRED = 5.999 AC.±
 AREA IN EXISTING ROW = 4.184 AC.±
 NET ROW AREA REQUIRED = 1.815 AC.±
 ESTIMATED REMAINING AREA = 139.781 AC.±

5730001
 DOC. NO. 2008-256742 WARRANTY DEED (CORPORATION)
CHAMPAIGN COUNTY FOREST PRESERVE DISTRICT
 (SEE SHEET 2 FOR AREAS)

5730021
 DOCUMENT NO. 2008-256742 WARRANTY DEED (CORPORATION)
SHANE BURKE BUSCH AS SUCCESSOR TRUSTEE OF THE SHANE BURKE BUSCH TRUST DATED JANUARY 28, 1988
 ROW AREA REQUIRED = 0.047 AC.±
 ESTIMATED REMAINING AREA = 24.953 AC.±

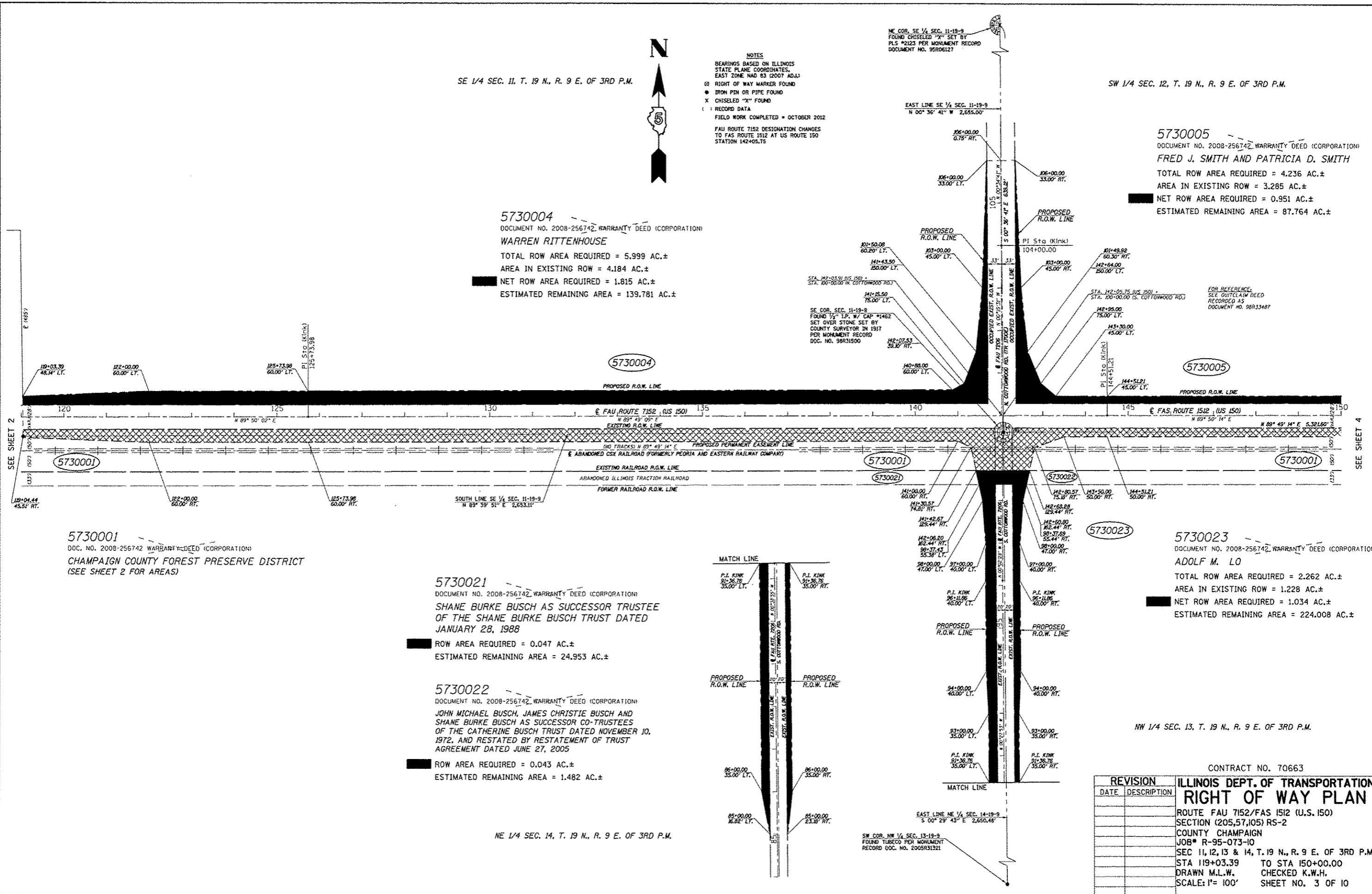
5730022
 DOCUMENT NO. 2008-256742 WARRANTY DEED (CORPORATION)
JOHN MICHAEL BUSCH, JAMES CHRISTIE BUSCH AND SHANE BURKE BUSCH AS SUCCESSOR CO-TRUSTEES OF THE CATHERINE BUSCH TRUST DATED NOVEMBER 10, 1972, AND RESTATED BY RESTATEMENT OF TRUST AGREEMENT DATED JUNE 27, 2005
 ROW AREA REQUIRED = 0.043 AC.±
 ESTIMATED REMAINING AREA = 1.482 AC.±

5730023
 DOCUMENT NO. 2008-256742 WARRANTY DEED (CORPORATION)
ADOLF M. LO
 TOTAL ROW AREA REQUIRED = 2.262 AC.±
 AREA IN EXISTING ROW = 1.228 AC.±
 NET ROW AREA REQUIRED = 1.034 AC.±
 ESTIMATED REMAINING AREA = 224.008 AC.±

NW 1/4 SEC. 13, T. 19 N., R. 9 E. OF 3RD P.M.

NE 1/4 SEC. 14, T. 19 N., R. 9 E. OF 3RD P.M.

SW COR. NW 1/4 SEC. 13-19-9
 FOUND TUBEC PER MONUMENT
 RECORD DOC. NO. 2005R31321



BY	DATE
R.O.W. PLAT	
NOTEBOOK NO.	

REVISION		ILLINOIS DEPT. OF TRANSPORTATION RIGHT OF WAY PLAN
DATE	DESCRIPTION	
		ROUTE FAU 7152/FAS 1512 (U.S. 150) SECTION (205,57,105) RS-2 COUNTY CHAMPAIGN JOB# R-95-073-10 SEC 11, 12, 13 & 14, T. 19 N., R. 9 E. OF 3RD P.M. STA 119+03.39 TO STA 150+00.00 DRAWN M.L.W. CHECKED K.W.H. SCALE: 1" = 100' SHEET NO. 3 OF 10

CONTRACT NO. 70663