

STATE OF ILLINOIS  
 DEPARTMENT OF TRANSPORTATION  
 DIVISION OF HIGHWAYS

**PROPOSED  
 HIGHWAY PLANS**

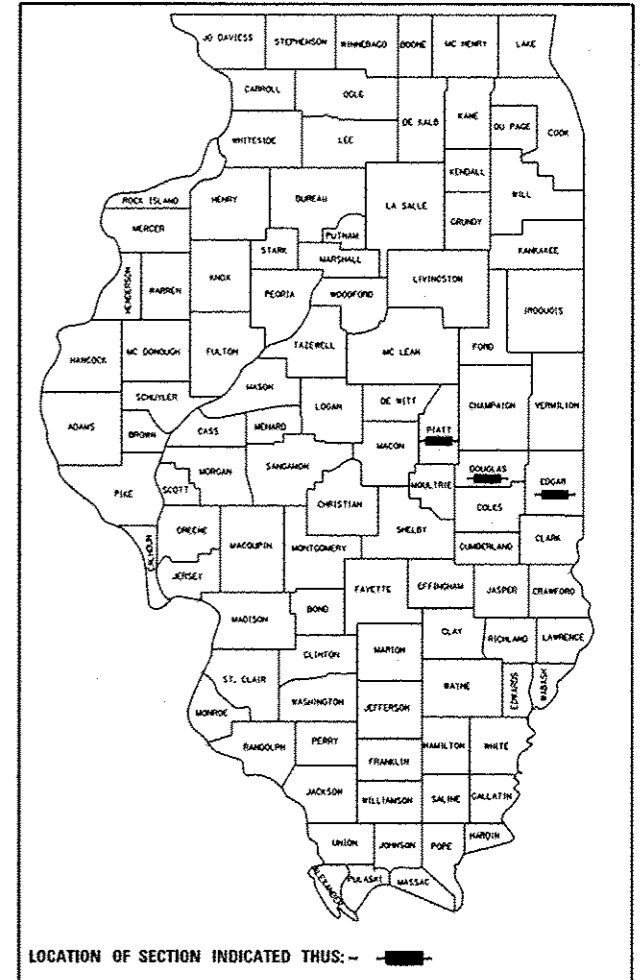
VARIOUS ROUTES  
 SECTION FY2014 BRIDGE DECK SEALING  
 VARIOUS DISTRICT WIDE BRIDGE DECK SEALING  
 DOUGLAS, EDGAR, & PIATT COUNTIES

C-95-029-12

F.A.I. RTE.	SECTION	COUNTY	TOTAL SHEETS	SHEET NO.
VAR	*	**	21	1
		ILLINOIS	CONTRACT NO. 70918	

\*FY2014 BRIDGE DECK SEALING  
 \*\*DOUGLAS, EDGAR, & PIATT COUNTIES

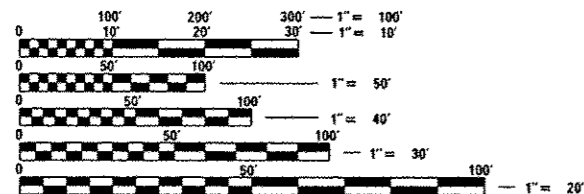
D-95-029-12



FOR INDEX OF SHEETS, SEE SHEET NO. 6  
 FOR SUMMARY OF QUANTITIES, SEE SHEET NO. 8

<b>CURRENT ADT</b>	
I-57	
HIGHEST LOCATION SHOWN	
2012 ADT =	19,400
2022 ADT =	22,100
PU + PC =	67.5%
SU =	3.9%
MU =	28.6%

<b>DESIGN DESIGNATION</b>
N. A.



FULL SIZE PLANS HAVE BEEN PREPARED USING STANDARD ENGINEERING SCALES. REDUCED SIZED PLANS WILL NOT CONFORM TO STANDARD SCALES. IN MAKING MEASUREMENTS ON REDUCED PLANS, THE ABOVE SCALES MAY BE USED.

J.U.L.I.E.  
 JOINT UTILITY LOCATION INFORMATION FOR EXCAVATION  
 1-800-892-0123  
 OR 811

PROJECT ENGINEER: TIM BRANDENBURG  
 PROJECT DESIGNER: DAVID JAYME  
 (217)465-4181

CONTRACT NO. 70918

FOR LOCATION MAPS,  
 SEE SHEET NO. 2, SHEET NO. 3, SHEET NO. 4,  
 & SHEET NO. 5

STATE OF ILLINOIS  
 DEPARTMENT OF TRANSPORTATION  
 DIVISION OF HIGHWAYS

SUBMITTED Nov. 20 2013  
*Joseph E. Casare*  
 DEPUTY DIRECTOR OF HIGHWAYS, REGION ENGINEER *etc*

Jan 24 2014  
*John D. Baranzelli, PE, Jr*  
 ENGINEER OF DESIGN AND ENVIRONMENT

Jan 24 2014  
*Omer Osman, PE, Jr*  
 DIRECTOR OF HIGHWAYS, CHIEF ENGINEER

**PRINTED BY THE AUTHORITY  
 OF THE STATE OF ILLINOIS**