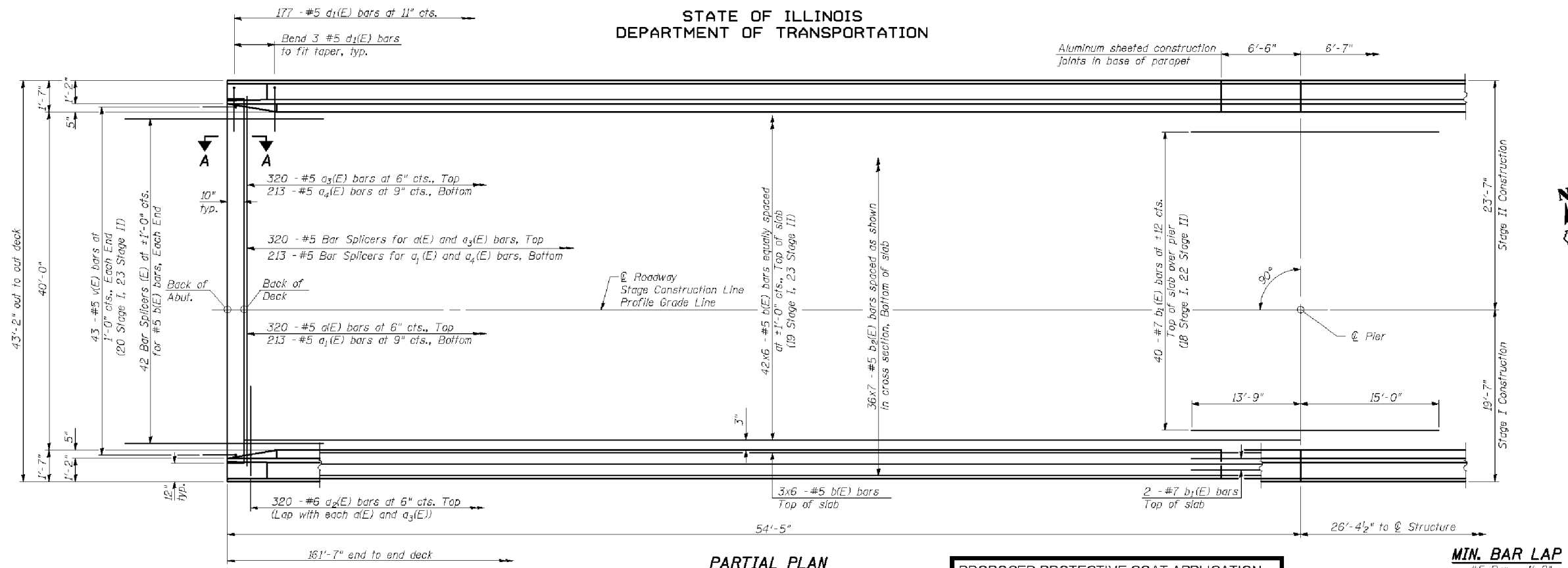


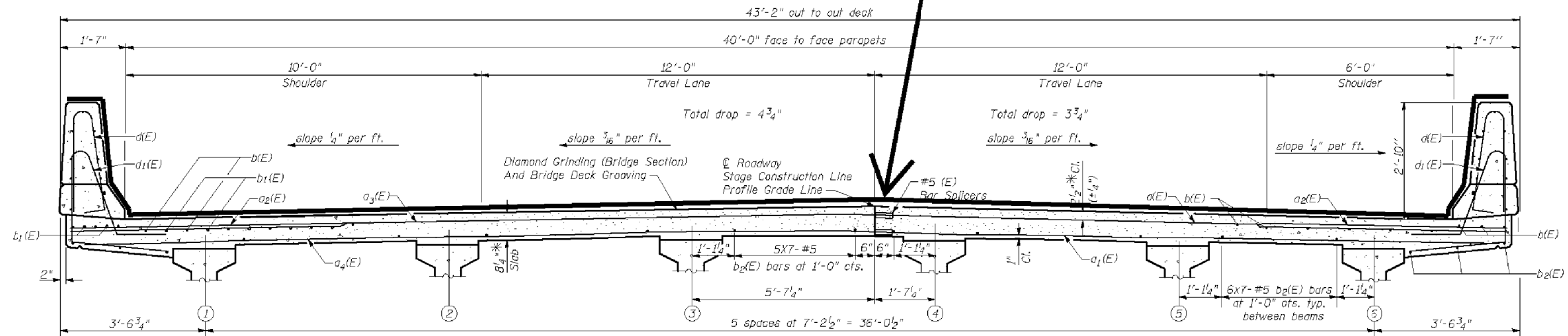
STATE OF ILLINOIS
DEPARTMENT OF TRANSPORTATION



PARTIAL PLAN

PROPOSED PROTECTIVE COAT APPLICATION

MIN. BAR LAP
#5 Bar = 1'-8"



TYPICAL SECTION; FOUR-LANE WITH PARAPET; DUAL STRUCTURES

**SUPERSTRUCTURE
I-74 OVER LITTLE KICKAPOO CREEK
STRUCTURE NO. 057-0120
AND 057-0121**

STRAND ASSOCIATES, INC.

DESIGNED	RRD
CHECKED	AJS
DRAWN	KAS
CHECKED	JAR

Notes:
See Sheet 12 of 27 for superstructure details and Bill of Material.
Bars indicated thus 20 x 3-#5 etc. indicates 20 lines of bars with 3 lengths per line.
See Sheet 12 of 27 for parapet reinforcement.
See Sheet 27 of 27 for bar splicers details.
See Sheet 11 of 27 for diaphragm details.

CROSS SECTION
(Looking Upstation Westbound)
(Looking Downstation Eastbound)

* Prior to grinding

SHEET NO. 10	F.A.I. RTE.	SECTION	COUNTY	TOTAL SHEETS	SHEET NO.
	74	(57-21B)BR	MCLEAN	61	22
27 SHEETS	SUPERSTRUCTURE DETAILS (1 OF 3)			CONTRACT NO. 70641	
FED. ROAD DIST. NO. 7 ILLINOIS FED. AID PROJECT					

FILE NAME =	USER NAME = piersonbr	DESIGNED -	TJB	REVISED -	
et:\pwork\pwork\piersonbr\d0312248\0570918-sh-typical.dgn		DRAWN -	DFJ	REVISED -	
PLOT SCALE = 40.0000 / in.		CHECKED -		REVISED -	
PLOT DATE = 11/21/2013		DATE -	08/15/12	REVISED -	

STATE OF ILLINOIS
DEPARTMENT OF TRANSPORTATION

TYPICAL SECTION; FOUR-LANE WITH PARAPET; DUAL STRUCTURES		F.A.I. RTE.	SECTION	COUNTY	TOTAL SHEETS	SHEET NO.
SCALE: NONE	SHEET NO. 1 OF 1 SHEETS	STA.	TO STA.		21	11
CONTRACT NO. 70918						
ILLINOIS FED. AID PROJECT						

•FY2014 BRIDGE DECK SEALING
•DOUGLAS, EDGAR, & PIATT COUNTIES