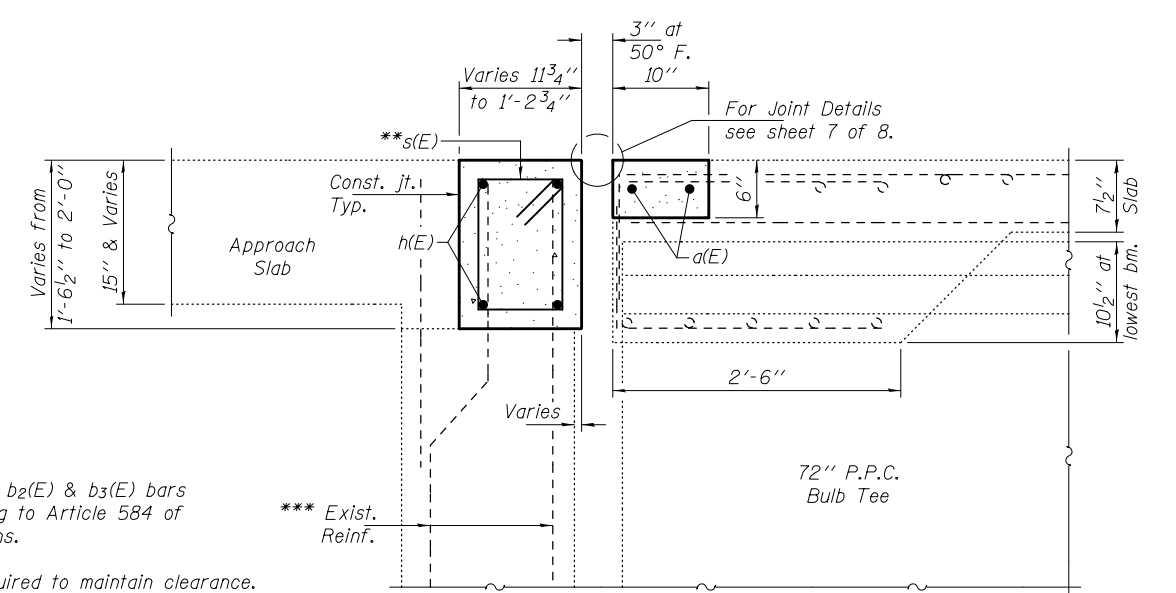


PLAN



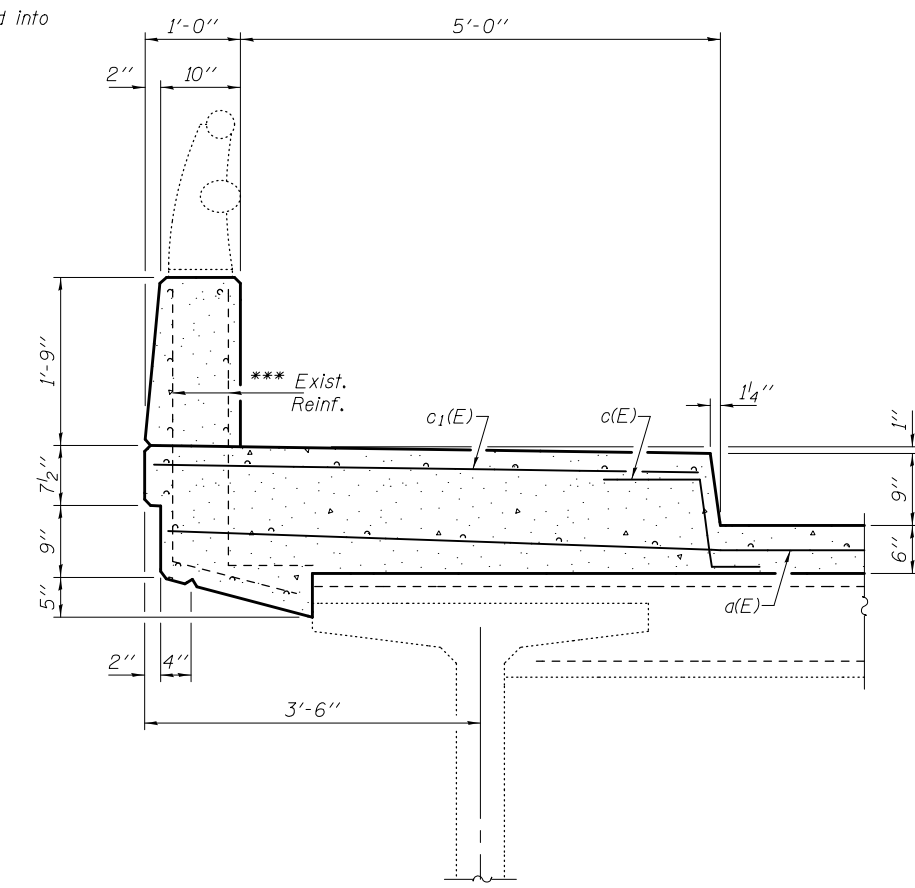
SECTION E-E

* Epoxy grout $a_6(E)$, $a_7(E)$, $b_2(E)$ & $b_3(E)$ bars in 9" min. holes according to Article 584 of the Standard Specifications.

** Tilt #5 $s(E)$ bars as required to maintain clearance.

*** Existing reinforcement extending into the removal area shall be cleaned, straightened and incorporated into the new construction. Any reinforcement bars that are damaged during concrete removal shall be replaced with an approved bar splicer or anchorage system. Cost shall be included with Concrete Removal.

Note A:
Existing reinforcement shall extend into new approach pavement 2'-7" min.



SECTION THRU SIDEWALK

Note:
For Section F-F and Bill of Material for Bridge see sheet 5 of 8.
For Sections G-G & H-H and Bill of Material for Approach see sheet 6 of 8.

DESIGNED ADY	EXAMINED <i>Timothy A. [Signature]</i>	DATE JANUARY 17, 2014
CHECKED ARS	PASSED <i>[Signature]</i>	REVISED
DRAWN Kyle M. Steffen	ACTING ENGINEER OF BRIDGES AND STRUCTURES	REVISED
CHECKED ADY ARS		

**STATE OF ILLINOIS
DEPARTMENT OF TRANSPORTATION**

**CONCRETE REPLACEMENT DETAILS
SN 092-0053**

SHEET NO. 4 OF 8 SHEETS

F.A.P. RTE.	SECTION	COUNTY	TOTAL SHEETS	SHEET NO.
729	(34Z-1B)I-2	VERMILION	25	9
ILLINOIS FED. AID PROJECT			CONTRACT NO. 70971	