

STATE OF ILLINOIS
DEPARTMENT OF TRANSPORTATION
DIVISION OF HIGHWAYS

**PROPOSED
HIGHWAY PLANS**

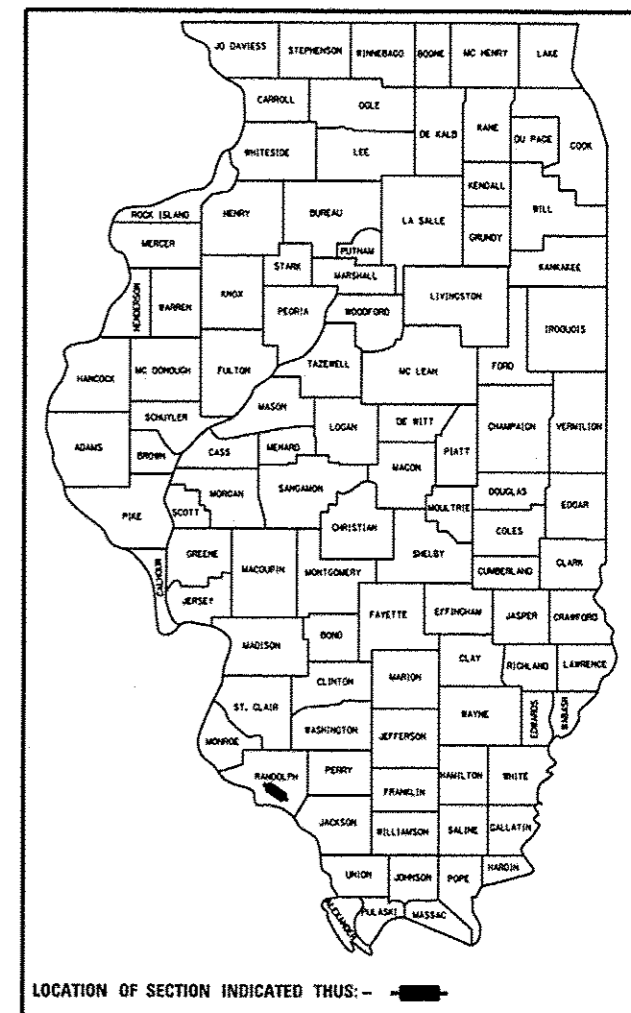
FAP ROUTE 312 (IL 003)
SECTION 74-1RS-1
PROJECT ACNHPP-0312 (045)
RESURFACING & NEW SHOULDERS
RANDOLPH COUNTY

C-98-022-13

F.A.P. RTE.	SECTION	COUNTY	TOTAL SHEETS	SHEET NO.
312	74-1RS-1	RANDOLPH	28	1
		ILLINOIS	CONTRACT NO. 76F89	

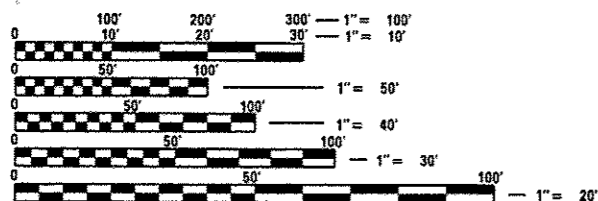
FOR INDEX OF SHEETS, SEE SHEET NO. 2

D-98-020-13



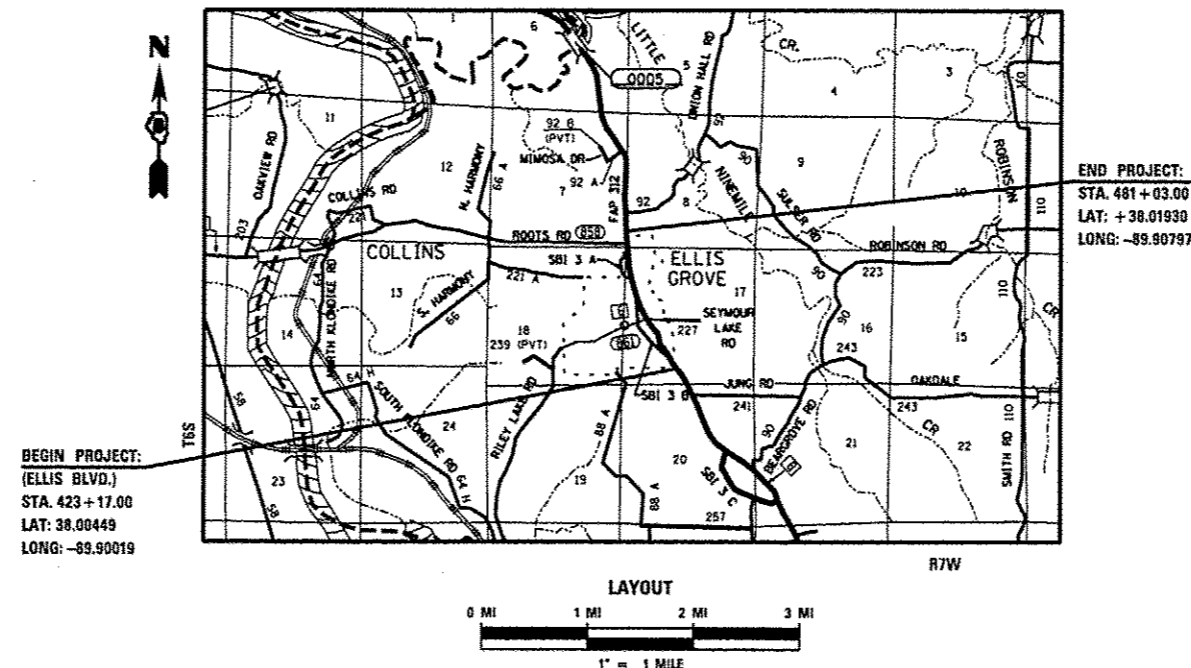
ADT

2011 =	3550
2014 =	3650
2034 =	4450
SU =	3.1%
MU =	6.5%



FULL SIZE PLANS HAVE BEEN PREPARED USING STANDARD ENGINEERING SCALES. REDUCED SIZED PLANS WILL NOT CONFORM TO STANDARD SCALES. IN MAKING MEASUREMENTS ON REDUCED PLANS, THE ABOVE SCALES MAY BE USED.

J.U.L.I.E.
JOINT UTILITY LOCATION INFORMATION FOR EXCAVATION
1-800-892-0123
OR 811



PROJECT ENGINEER: PATTI LEBEAU (618) 346-3179
PROJECT MANAGER: REBECCA THARP (618) 346-3323

GROSS LENGTH = 5786 FT. = 1.096 MILE
NET LENGTH = 5786 FT. = 1.096 MILE

DESIGN DESIGNATION
NA

CONTRACT NO. 76F89

STATE OF ILLINOIS
DEPARTMENT OF TRANSPORTATION
DIVISION OF HIGHWAYS

SUBMITTED *December 5, 2013*

Jeffrey A. Kern
DEPUTY DIRECTOR OF HIGHWAYS, REGION 5 ENGINEER

John D. Baranzelli, P.E.
ENGINEER OF DESIGN AND ENVIRONMENT

Chris Osman, P.E.
DIRECTOR OF HIGHWAYS, CHIEF ENGINEER

**PRINTED BY THE AUTHORITY
OF THE STATE OF ILLINOIS**