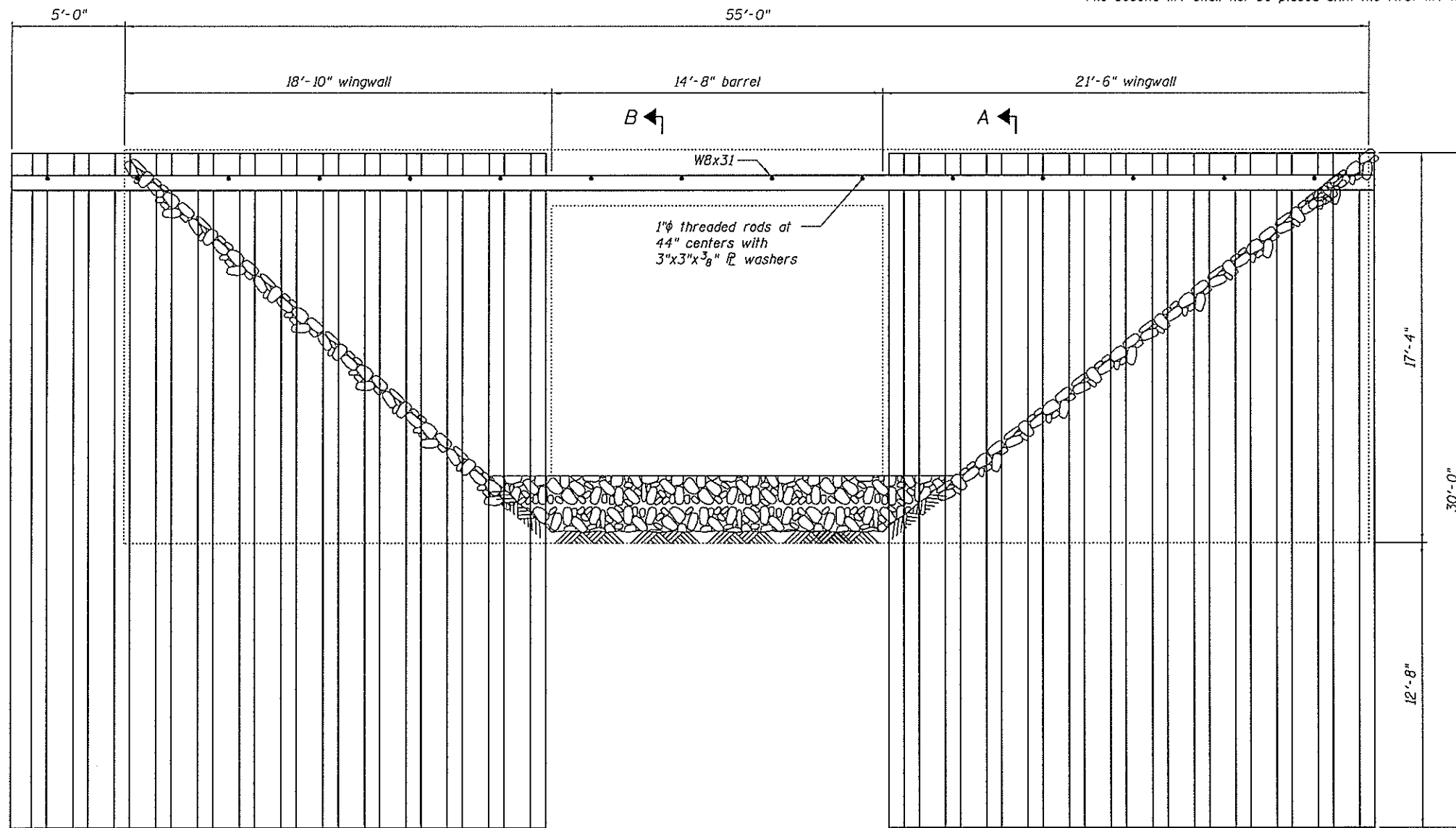
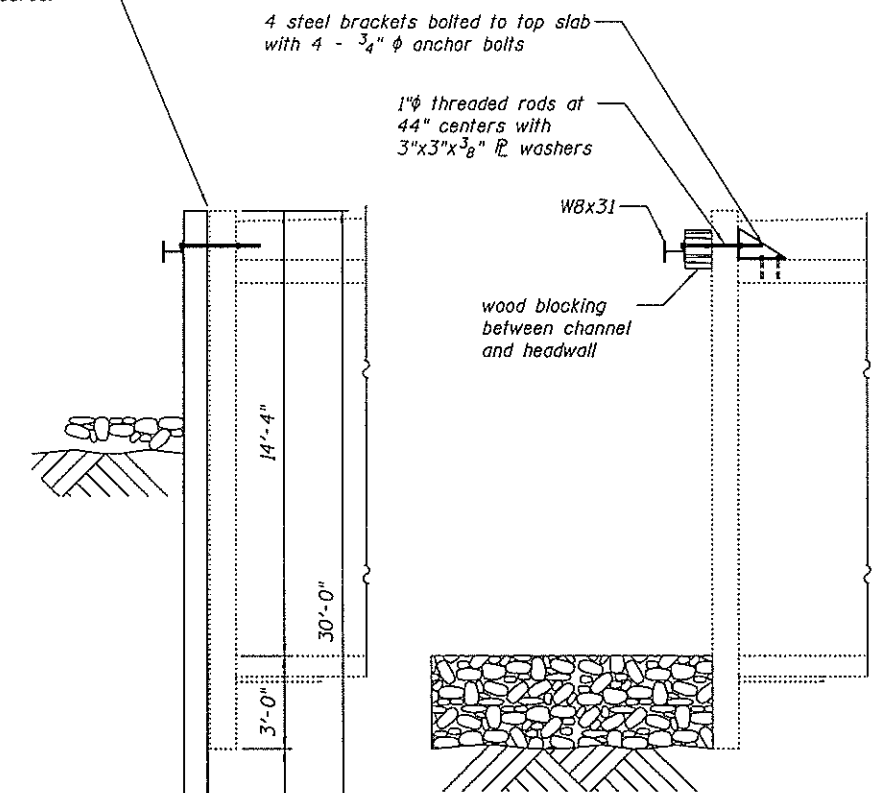


**PLAN VIEW**

Fill area between sheeting and wingwalls with concrete in 2 lifts.  
Average thickness assumed 1'.  
The first lift shall be placed to 8' above the culvert bottom slab.  
The second lift shall not be placed until the first lift has cured.



**CULVERT ELEVATION**  
(W. end looking E)  
(E. end looking W)



**SECTION A-A**

DESIGNED - J. Uehle  
CHECKED - C. Sanders  
DRAWN - J. Uehle  
CHECKED - C. Sanders

EXAMINED  
ENGINEER OF STRUCTURAL SERVICES  
PASSED  
ENGINEER OF BRIDGES AND STRUCTURES

DATE - 2/14/2013  
REVISED  
REVISED

STATE OF ILLINOIS  
DEPARTMENT OF TRANSPORTATION

060-2456  
SHEET PILING DETAILS

SHEET NO. 2 OF 2 SHEETS

F.A.P. RTE.	SECTION	COUNTY	TOTAL SHEETS	SHEET NO.
604	(103,125)RS-2, 125-BR-2	Madison	46	45
CONTRACT NO. 76G25			ILLINOIS FED. AID PROJECT	